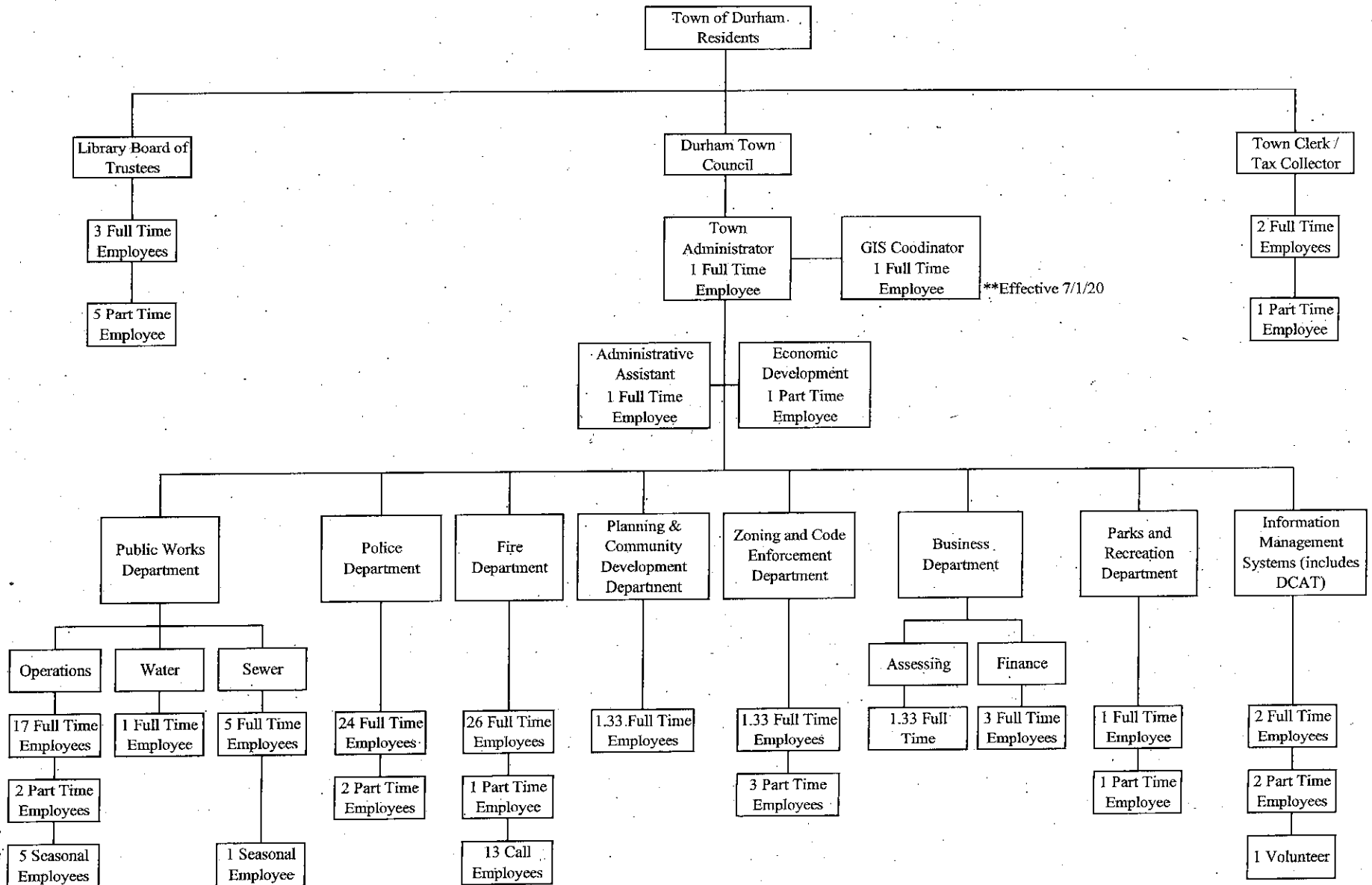


**TOWN OF DURHAM, NEW HAMPSHIRE
ORGANIZATIONAL CHART
PROPOSED 2020**



**TOWN OF DURHAM, NH
DEPARTMENT POSITION LISTINGS**

POSITION TITLE	2011 # OF POSITIONS	2012 # OF POSITIONS	2013 # OF POSITIONS	2014 # OF POSITIONS	2015 # OF POSITIONS	2016 # OF POSITIONS	2017 # OF POSITIONS	2018 # OF POSITIONS	2019 # OF POSITIONS	2020 PROPOSED # OF POSITIONS
TOWN CLERK'S OFFICE										
TOWN CLERK/TAX COLLECTOR	1.00	1.00	1.00	1.00	1.00	1.00	1.00	1.00	1.00	1.00
DEPUTY TOWN CLERK/TAX COLLECTOR	1.00	1.00	1.00	1.00	1.00	1.00	1.00	1.00	1.00	1.00
SECRETARY (ASST. TOWN CLERK/TAX COLLECTOR)	0.60	0.60	0.60	0.60	0.60	0.60	0.60	0.60	0.60	0.60
TOWN ADMINISTRATOR'S OFFICE										
TOWN ADMINISTRATOR	1.00	1.00	1.00	1.00	1.00	1.00	1.00	1.00	1.00	1.00
ECONOMIC DEVELOPMENT DIRECTOR	0.00	0.00	0.00	0.60	0.60	0.60	0.60	0.60	0.60	0.60
GIS COORDINATOR	0.00	0.00	0.00	0.00	0.00	0.00	0.00	0.00	0.00	0.50
ADMINISTRATIVE ASSISTANT	1.00	1.00	1.00	1.00	1.00	1.00	1.00	1.00	1.00	1.00
BUSINESS DEPARTMENT										
BUSINESS MANAGER	1.00	1.00	1.00	1.00	1.00	1.00	1.00	1.00	1.00	1.00
FINANCIAL ANALYST	1.00	1.00	1.00	1.00	1.00	1.00	1.00	1.00	1.00	1.00
ADMINISTRATIVE ASSISTANT	1.00	1.00	1.00	1.00	1.00	1.00	1.00	1.00	1.00	1.00
ASSESSOR	0.00	0.00	1.00	1.00	1.00	1.00	1.00	1.00	1.00	1.00
INFORMATION TECHNOLOGY										
COMPUTER INFO TECHNOLOGY MANAGER	1.00	1.00	1.00	1.00	1.00	1.00	1.00	1.00	1.00	1.00
DCAT COORDINATOR	0.50	0.50	1.00	1.00	1.00	1.00	1.00	1.00	1.00	1.00
PLANNING DEPARTMENT										
PLANNING DIRECTOR	1.00	1.00	1.00	1.00	1.00	1.00	1.00	1.00	1.00	1.00
ADMINISTRATIVE ASSISTANT (shared w/Building & Assessing)	1.00	1.00	1.00	1.00	1.00	1.00	1.00	1.00	1.00	1.00
BUILDING INSPECTOR/CODE ENFORCEMENT										
BUILDING INSPECTOR/CODE ENFORCEMENT OFFICER	1.00	1.00	1.00	1.00	1.00	1.00	1.00	1.00	1.00	1.00
ASST. ZONING/CODE ENFORCEMENT OFFICER	0.00	0.00	0.00	1.00	1.00	0.00	0.00	0.00	0.00	0.00
INSPECTORS	0.00	0.00	0.40	0.40	0.40	0.40	0.40	0.75	0.75	0.75
RECREATION DEPARTMENT										
RECREATION DIRECTOR	0.50	0.75	1.00	1.00	1.00	1.00	1.00	1.00	1.00	1.00
RECREATION ASSISTANT	0.00	0.00	0.00	0.00	0.00	0.00	0.00	0.50	0.50	0.50
TOTAL TOWN OFFICE PERSONNEL	12.60	12.85	15.00	16.60	16.60	15.60	15.60	16.45	16.45	16.95
POLICE DEPARTMENT										
CHIEF OF POLICE	1.00	1.00	1.00	1.00	1.00	1.00	1.00	1.00	1.00	1.00
DEPUTY CHIEF OF POLICE	1.00	1.00	1.00	1.00	1.00	1.00	1.00	1.00	1.00	1.00
LIEUTENANT	0.00	0.00	0.00	0.00	0.00	0.00	0.00	0.00	0.00	0.00
CAPTAIN	1.00	1.00	1.00	1.00	1.00	1.00	1.00	1.00	1.00	1.00
SERGEANT	5.00	5.00	5.00	5.00	5.00	5.00	5.00	5.00	5.00	5.00
PATROL	11.00	10.00	11.00	12.00	12.00	12.00	12.00	13.00	13.00	13.00
ADMINISTRATIVE ASSISTANT	2.00	2.00	2.00	2.00	2.00	2.00	2.00	2.00	2.00	2.00
PARKING ENFORCEMENT OFFICER/EVIDENCE TECHNICIAN	1.00	1.00	1.00	1.50	1.50	1.50	1.50	1.50	1.50	1.50
PARKING ENFORCEMENT SECRETARY	0.50	0.50	0.50	0.50	0.50	0.50	0.50	0.50	0.50	0.50
TOTAL POLICE DEPARTMENT PERSONNEL	22.50	21.50	22.50	24.00	24.00	24.00	24.00	25.00	25.00	25.00

**TOWN OF DURHAM, NH
DEPARTMENT POSITION LISTINGS**

POSITION TITLE	2011 # OF POSITIONS	2012 # OF POSITIONS	2013 # OF POSITIONS	2014 # OF POSITIONS	2015 # OF POSITIONS	2016 # OF POSITIONS	2017 # OF POSITIONS	2018 # OF POSITIONS	2019 # OF POSITIONS	2020 PROPOSED # OF POSITIONS
FIRE DEPARTMENT										
FIRE CHIEF	1.00	1.00	1.00	1.00	1.00	1.00	1.00	1.00	1.00	1.00
ASSISTANT FIRE CHIEF	1.00	1.00	1.00	1.00	1.00	1.00	1.00	1.00	1.00	1.00
DEPUTY FIRE CHIEF	1.00	1.00	1.00	1.00	1.00	1.00	1.00	1.00	1.00	1.00
DIVISION CHIEF OF OPERATIONS	0.00	0.00	0.00	0.00	0.00	0.00	0.00	0.00	0.00	0.00
DIVISION CHIEF OF PREVENTION AND SAFETY	0.00	0.00	0.00	0.00	0.00	0.00	0.00	0.00	0.00	0.00
ADMINISTRATIVE ASSISTANT	1.00	1.00	1.80	1.80	1.80	1.80	1.80	1.80	1.80	1.80
CAPTAIN	4.00	4.00	4.00	4.00	4.00	4.00	4.00	4.00	4.00	4.00
FIREFIGHTER	16.00	16.00	16.00	16.00	16.00	16.00	16.00	16.00	16.00	16.00
FIRE INSPECTOR	1.00	1.00	2.00	2.00	2.00	2.00	2.00	2.00	2.00	2.00
TOTAL FIRE DEPARTMENT PERSONNEL	25.00	25.00	26.80	26.80	26.80	26.80	26.80	26.80	26.80	26.80
PUBLIC WORKS DEPARTMENT										
PUBLIC WORKS DIRECTOR	1.00	1.00	1.00	1.00	1.00	1.00	1.00	1.00	1.00	1.00
ENGINEER	2.00	2.00	2.00	2.00	2.00	1.00	1.00	1.00	1.00	1.00
ASST. TO THE PW DIRECTOR	1.00	1.00	1.00	1.00	1.00	1.00	1.00	1.00	1.00	1.00
OFFICE ASSISTANT	0.00	0.00	0.00	0.50	0.50	0.50	0.50	1.00	1.00	1.00
ASST. DIRECTOR OF OPERATIONS	1.00	1.00	1.00	1.00	1.00	1.00	1.00	1.00	1.00	1.00
HIGHWAY FOREMAN	1.00	1.00	1.00	1.00	1.00	1.00	1.00	1.00	1.00	1.00
HIGHWAY TRADESMAN	0.00	0.00	0.00	0.00	0.00	0.00	0.00	1.00	0.00	0.00
HIGHWAY MAINTENANCE WORKER IV	1.00	1.00	1.00	1.00	1.00	1.00	1.00	0.00	2.00	2.00
HIGHWAY MAINTENANCE WORKER III	1.00	1.00	1.00	1.00	1.00	1.00	1.00	1.00	1.00	1.00
TRADESMAN (mechanic)	1.00	1.00	1.00	1.00	1.00	1.00	1.00	1.00	1.00	1.00
ASST. TRADESMAN (asst. mechanic)	0.40	0.40	0.40	0.40	0.40	0.40	0.40	0.40	0.40	0.40
BUILDINGS & GROUNDS FOREMAN	1.00	1.00	1.00	1.00	1.00	1.00	1.00	1.00	1.00	1.00
BUILDINGS & GROUNDS MAINTENANCE WORKER III	1.00	1.00	1.00	1.00	1.00	1.00	1.00	1.00	1.00	1.00
TRAFFIC CONTROL MAINTENANCE WORKER IV	1.00	1.00	1.00	1.00	1.00	1.00	1.00	1.00	1.00	1.00
SANITATION MAINTENANCE WORKER IV	3.00	3.00	3.00	3.00	3.00	3.00	3.00	3.00	3.00	3.00
SANITATION MAINTENANCE WORKER III	1.00	1.00	1.00	1.00	1.00	1.00	1.00	1.00	1.00	1.00
SANITATION MAINTENANCE WORKER	0.50	0.50	0.50	0.50	0.50	0.50	0.50	0.50	0.50	0.50
WATER DIVISION										
WATER TRADESMAN	1.00	1.00	1.00	1.00	1.00	1.00	1.00	1.00	1.00	1.00
WATER MAINTENANCE WORKER IV	0.00	0.00	0.00	0.00	0.00	0.00	0.00	0.00	0.00	0.00
WASTEWATER DIVISION										
SUPT. OF WASTEWATER	1.00	1.00	1.00	1.00	1.00	1.00	1.00	1.00	1.00	1.00
WASTEWATER LAB TECHNICIAN	1.00	1.00	1.00	1.00	1.00	1.00	1.00	1.00	1.00	1.00
WASTEWATER MAINTENANCE WORKER V	1.00	1.00	1.00	1.00	1.00	1.00	1.00	1.00	1.00	1.00
WASTEWATER MAINTENANCE WORKER IV	1.00	1.00	1.00	1.00	1.00	0.00	0.00	0.00	0.00	0.00
WASTEWATER TRADESMAN	1.00	1.00	1.00	1.00	1.00	2.00	2.00	2.00	2.00	2.00
TOTAL PUBLIC WORKS DEPARTMENT PERSONNEL	22.90	22.90	22.90	23.40	23.40	22.40	22.40	22.90	23.90	23.90
LIBRARY										
DIRECTOR	1.00	1.00	1.00	1.00	1.00	1.00	1.00	1.00	1.00	1.00
ASSISTANT DIRECTOR	0.63	0.63	0.83	1.00	1.00	1.00	1.00	1.00	1.00	1.00
CHILDREN'S AND YOUNG ADULT LIBRARIAN	0.63	0.63	0.83	1.00	1.00	1.00	1.00	1.00	1.00	1.00
LIBRARY ASSISTANTS	1.48	1.48	2.25	2.25	2.55	2.55	2.85	2.85	2.85	2.85
TOTAL LIBRARY PERSONNEL	3.73	3.73	4.90	5.25	5.55	5.55	5.85	5.85	5.85	5.85

**TOWN OF DURHAM, NH
DEPARTMENT POSITION LISTINGS**

POSITION TITLE	2011 # OF POSITIONS	2012 # OF POSITIONS	2013 # OF POSITIONS	2014 # OF POSITIONS	2015 # OF POSITIONS	2016 # OF POSITIONS	2017 # OF POSITIONS	2018 # OF POSITIONS	2019 # OF POSITIONS	2020 PROPOSED # OF POSITIONS
CHURCHILL RINK										
RINK MANAGER	0.00	0.00	0.00	0.00	0.00	0.00	0.00	0.00	0.00	1.00
TOTAL CHURCHILL RINK PERSONNEL	0.00	0.00	0.00	0.00	0.00	0.00	0.00	0.00	0.00	1.00
TOTAL NUMBER OF PERSONNEL										
	86.73	85.98	92.10	96.05	96.35	94.35	94.65	97.00	98.00	99.50
	0.00	(0.75)	6.12	3.95	0.30	(2.00)	0.30	2.35	1.00	1.50
		Recreation +0.25	Recreation +0.25	Bldg Insp +1.0	Library +0.30	Bldg Insp (-1.0)	Library +0.30	Bldg Insp +0.35	DPW +1.0	GIS +0.5
		Police (-1.00)	Police +1.00	Police +1.50		Engineer (-1.0)		Recreation +0.5		Rink +1.0
			Fire +1.80	DPW +0.50				DPW +0.5		
			DCAT +0.50	Econ Dvl +0.60				Police +1.0		
			Assessor +1.0	Library +0.35						
			Bldg Insp +0.40							
			Library +1.17							

IN ADDITION THE TOWN OF DURHAM HAS THE FOLLOWING SEASONAL/TEMPORARY/WORK STUDY POSITIONS:

- PLANNING DEPARTMENT - Work Study Office Assistant when available
- POLICE DEPARTMENT - Work Study Office Assistant when available
- FIRE DEPARTMENT - Work Study Office Assistant when available
- FIRE DEPARTMENT - 13 Call Firefighters
- PUBLIC WORKS DEPARTMENT - 2-5 Seasonal Laborers
- RECREATION DEPARTMENT - Seasonal Camp Counselors and UNH Interns when available
- CHURCHILL RINK - Seasonal Employees
- LIBRARY - Work Study Students and Substitute Librarians