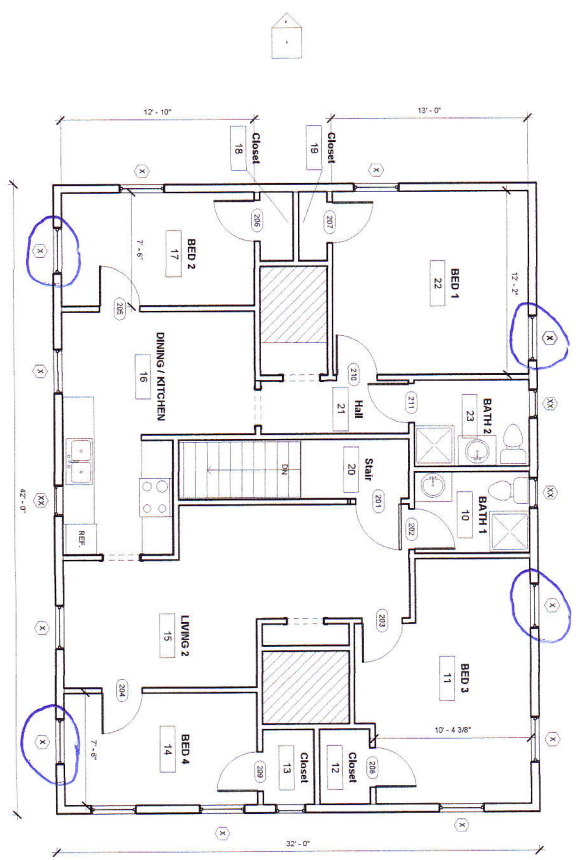


2. 2nd Floor Existing  
1/4" = 1'-0"

Mark	Type	Level	Type	Width	Height	Door Schedule	Comments
201	B	2ND FLOOR	36" x 80"	3'-0"	5'-8"		
202	C	2ND FLOOR	32" x 80"	2'-8"	6'-8"		
203	C	2ND FLOOR	32" x 80"	2'-8"	6'-8"		
204	C	2ND FLOOR	32" x 80"	2'-8"	6'-8"		
205	C	2ND FLOOR	32" x 80"	2'-8"	6'-8"		
206	C	2ND FLOOR	32" x 80"	2'-8"	6'-8"		
207	C	2ND FLOOR	32" x 80"	2'-8"	6'-8"		
208	C	2ND FLOOR	32" x 80"	2'-8"	6'-8"		
210	C	2ND FLOOR	32" x 80"	2'-8"	6'-8"		
211	C	2ND FLOOR	32" x 80"	2'-8"	6'-8"		
X1	C	2ND FLOOR	32" x 80"	2'-8"	6'-8"		Existing to be removed
X2	C	2ND FLOOR	32" x 80"	2'-8"	6'-8"		Existing to be removed
X3	C	2ND FLOOR	32" x 80"	2'-8"	6'-8"		Existing to be removed



1. 2ND FLOOR  
1/4" = 1'-0"

Room Number	Level	Room Name	Area	Floor	Base	Wall	Ceiling	Ceiling Height	Comments
10	2ND FLOOR	BATH 1	41 SF	existing					
11	2ND FLOOR	BED 3	167 SF	Carpet					existing
12	2ND FLOOR	Closet	17 SF						
13	2ND FLOOR	Closet	17 SF						
14	2ND FLOOR	BED 4	95 SF						
15	2ND FLOOR	LIVING 2	205 SF	Vinyl Plank					existing
16	2ND FLOOR	DINING / KITCHEN	163 SF						
17	2ND FLOOR	BED 2	95 SF						existing
18	2ND FLOOR	Closet	10 SF						
19	2ND FLOOR	Closet	9 SF						
20	2ND FLOOR	Hall	59 SF						
21	2ND FLOOR	Hall	35 SF						
22	2ND FLOOR	BED 1	157 SF	Vinyl Plank					existing
23	2ND FLOOR	BATH 2	44 SF	Sheet Vinyl					existing

**ISAIAH DESIGN, PLLC**  
 ARCHITECTURE &  
 URBAN DESIGN  
 1000 9th Street NW  
 Washington, DC 20004  
 www.isaiahdesign.com

**ARCHITECT**  
 ISAIAH DESIGN, PLLC  
 1000 9th Street NW  
 Washington, DC 20004  
 www.isaiahdesign.com

**CONSULTANT**  
 ISAIAH DESIGN, PLLC  
 1000 9th Street NW  
 Washington, DC 20004  
 www.isaiahdesign.com

**Second Floor Plan**  
 Ballard Building  
 1 Madbury Rd.  
 Project Number: 1403  
 Date: 07/16/2015  
 Client: NI  
 Designer: NI  
 Scale: 1/4" = 1'-0"