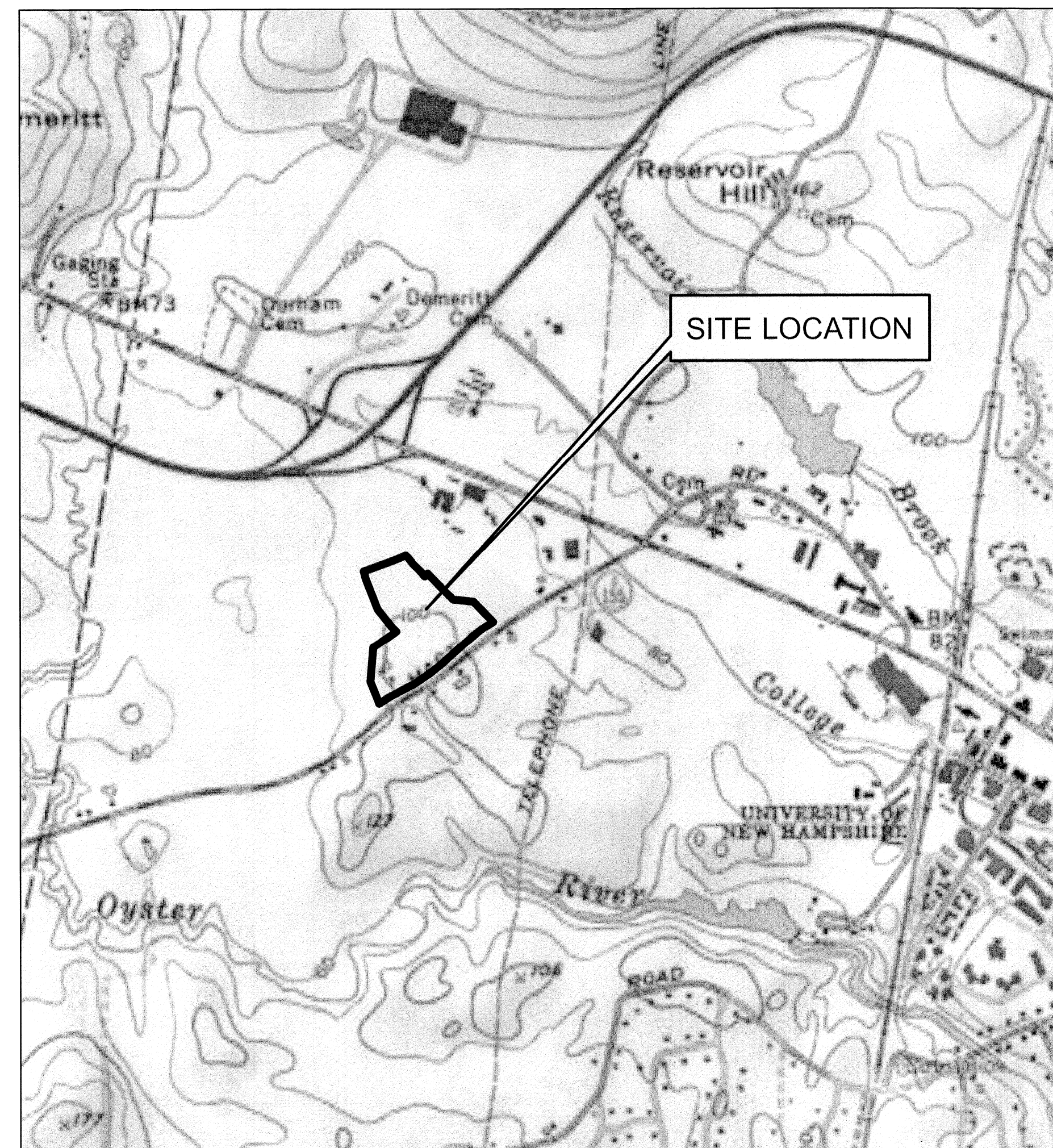


PEAK CAMPUS DEVELOPMENT, LLC THE LODGES AT WEST EDGE DURHAM, NEW HAMPSHIRE

AUGUST 22, 2012
LAST REVISED: JUNE 21, 2013

SHEET NO.	TITLE	LAST REVISED
1	COVER SHEET	6/21/13
2	EXISTING CONDITIONS PLAN	6/11/13
3	DEMOLITION PLAN	6/21/13
4	OVERALL SITE PLAN	6/21/13
5	SITE PLAN	6/21/13
6	SITE PLAN	6/21/13
7	OVERALL GRADING, DRAINAGE, AND EROSION CONTROL PLAN	6/21/13
8	GRADING, DRAINAGE, AND EROSION CONTROL PLAN	6/21/13
9	GRADING, DRAINAGE, AND EROSION CONTROL PLAN	6/21/13
10	UTILITIES PLAN	6/21/13
11	UTILITIES PLAN	6/21/13
12	LANDSCAPE PLAN	6/21/13
13	LANDSCAPE PLAN	6/21/13
14	TRUCK TURNING PLAN - FIRE TRUCK	6/11/13
15	EROSION CONTROL NOTES AND DETAILS	6/11/13
16	DETAILS	6/21/13
17	DETAILS	6/11/13
18	DETAILS	6/11/13
19	DETAILS	6/11/13
20	DETAILS	6/11/13
21	DETAILS	6/11/13
22	DETAILS	6/11/13
23	PHOTOMETRICS PLAN	6/11/13
24	MULTI-USE PATH EXISTING CONDITIONS/DEMOLITION PLAN	6/21/13
25	MULTI-USE PATH SITE PLAN	6/21/13
26	MULTI-USE PATH DETAILS SHEET	6/21/13
27	MULTI-USE PATH PHOTOMETRICS PLAN	6/11/13
28	MAST ROAD RIGHT-TURN LANE PLAN	6/11/13
1 OF 1	EASEMENT PLAN-DRAFT	2/21/13



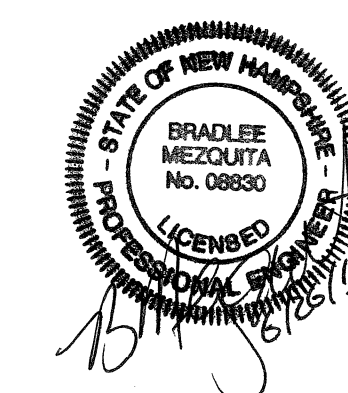
SCALE: 1"=1000'

APPROVED DATE _____
DURHAM, N.H.
PLANNING BOARD

THE SITE PLAN REVIEW REGULATIONS OF THE TOWN OF DURHAM ARE A PART OF THIS PLAN, AND APPROVAL OF THIS PLAN IS CONTINGENT UPON COMPLETION OF ALL REQUIREMENTS OF SAID SUBDIVISION REGULATIONS, EXCEPTING ONLY MODIFICATIONS MADE IN WRITING BY THE BOARD AND ATTACHED HERETO.

PERMIT/APPROVAL	APPROVED	EXPIRES	NUMBER
Town of Durham Site Plan Approval	11/28/12	-	-
Town of Durham Conditional Use Approval	11/28/12	-	-
Town of Durham Conditional Use Approval (Path)	2/27/13	-	-
Town of Durham Sewer and Water Extension Permit	PENDING	-	-
NHDES Alteration of Terrain Permit	2/12/13	2/12/18	AsT-0523
NHDES Wetlands Permit (Path)	6/7/13	6/7/18	2013-00435
NHDES Sewer Connection Permit	4/25/13	4/25/15	D2013-0308
NHDOT Driveway Permit	PENDING	-	-

PEAK CAMPUS DEVELOPMENT, LLC
2970 CLAIRMONT ROAD, SUITE 310
ATLANTA, GA 30329



Tighe & Bond
Consulting Engineers
177 Corporate Drive
Portsmouth, NH 03801

