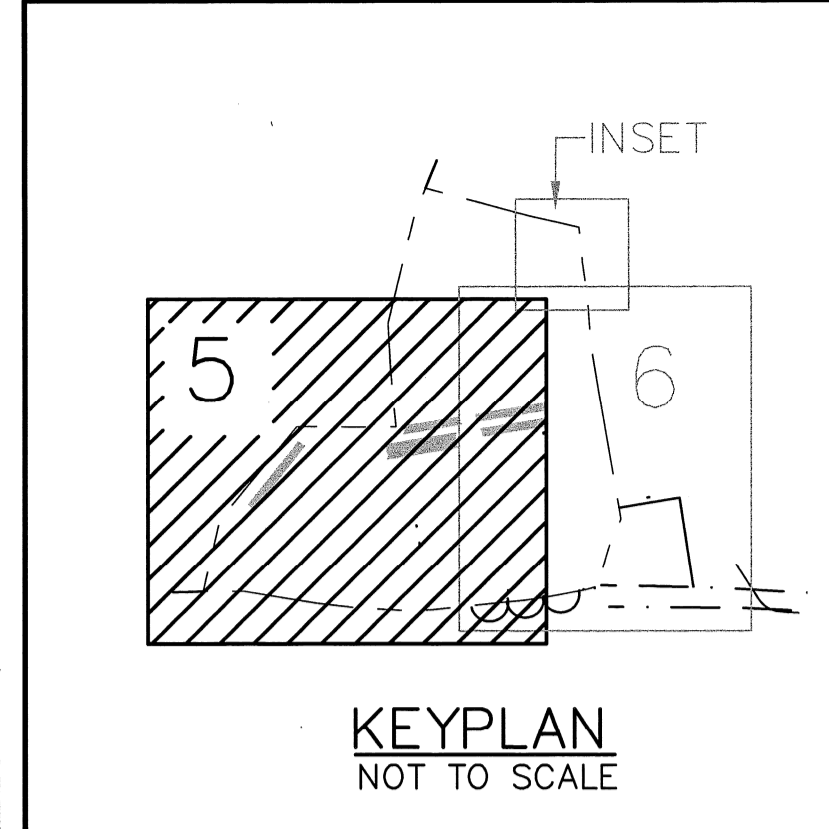
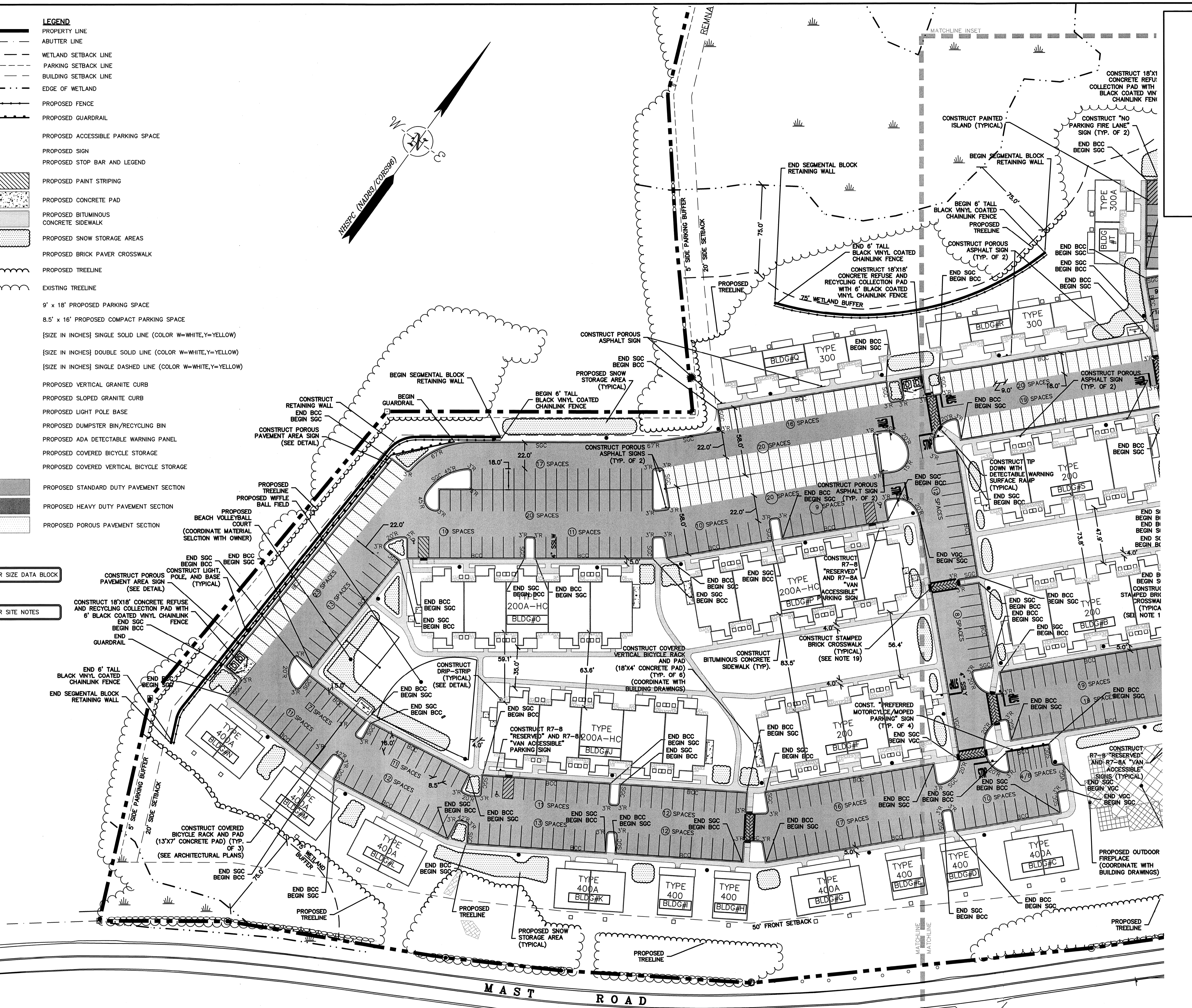


- LEGEND**
- PROPERTY LINE
  - - - BUTTER LINE
  - - - WETLAND SETBACK LINE
  - - - PARKING SETBACK LINE
  - - - BUILDING SETBACK LINE
  - - - EDGE OF WETLAND
  - PROPOSED FENCE
  - PROPOSED GUARDRAIL
  - PROPOSED ACCESSIBLE PARKING SPACE
  - PROPOSED SIGN
  - PROPOSED STOP BAR AND LEGEND
  - PROPOSED PAINT STRIPING
  - PROPOSED CONCRETE PAD
  - PROPOSED BITUMINOUS CONCRETE SIDEWALK
  - PROPOSED SNOW STORAGE AREAS
  - PROPOSED BRICK PAVEMENT CROSSWALK
  - PROPOSED TREELINE
  - EXISTING TREELINE
- ⑨ SPACES 9' x 18' PROPOSED PARKING SPACE
- ⑧ SPACES 8.5' x 16' PROPOSED COMPACT PARKING SPACE
- {SSL( )} {SIZE IN INCHES} SINGLE SOLID LINE (COLOR W=WHITE, Y=YELLOW)
- {DSL( )} {SIZE IN INCHES} DOUBLE SOLID LINE (COLOR W=WHITE, Y=YELLOW)
- {SDL( )} {SIZE IN INCHES} SINGLE DASHED LINE (COLOR W=WHITE, Y=YELLOW)
- VGC PROPOSED VERTICAL GRANITE CURB
- SGC PROPOSED SLOPED GRANITE CURB
- PROPOSED LIGHT POLE BASE
- PROPOSED DUMPSTER BIN/RECYCLING BIN
- PROPOSED ADA DETECTABLE WARNING PANEL
- PROPOSED COVERED BICYCLE STORAGE
- PROPOSED COVERED VERTICAL BICYCLE STORAGE
- PROPOSED STANDARD DUTY PAVEMENT SECTION
- PROPOSED HEAVY DUTY PAVEMENT SECTION
- PROPOSED POROUS PAVEMENT SECTION

SEE SHEET 4 FOR SIZE DATA BLOCK

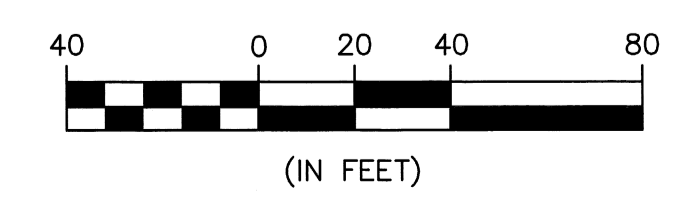
SEE SHEET 4 FOR SITE NOTES



**Peak Campus Development, LLC**  
 The Lodges at West Edge  
 Durham, NH

Mark	Date	Description
G	6/21/13	REVISED FOR FINAL APPROVAL
F	6/11/13	ISSUED FOR BUILDING PERMIT
E	5/20/13	FOR FINAL APPROVAL
D	3/8/13	REVISED FOR CONDITIONAL APPROVAL
C	11/11/12	REVISED FOR PB SUBMISSION
B	8/26/12	REVISED FOR PB SUBMISSION
A	8/22/12	PB SUBMISSION

PROJECT NO: P0637  
 FILE: P0637\_SITE.dwg  
 DRAWN BY: KAM/SLK1  
 CHECKED: JMP2  
 APPROVED BY: GMM



SITE PLAN  
 SCALE: AS SHOWN  
 SHEET 5