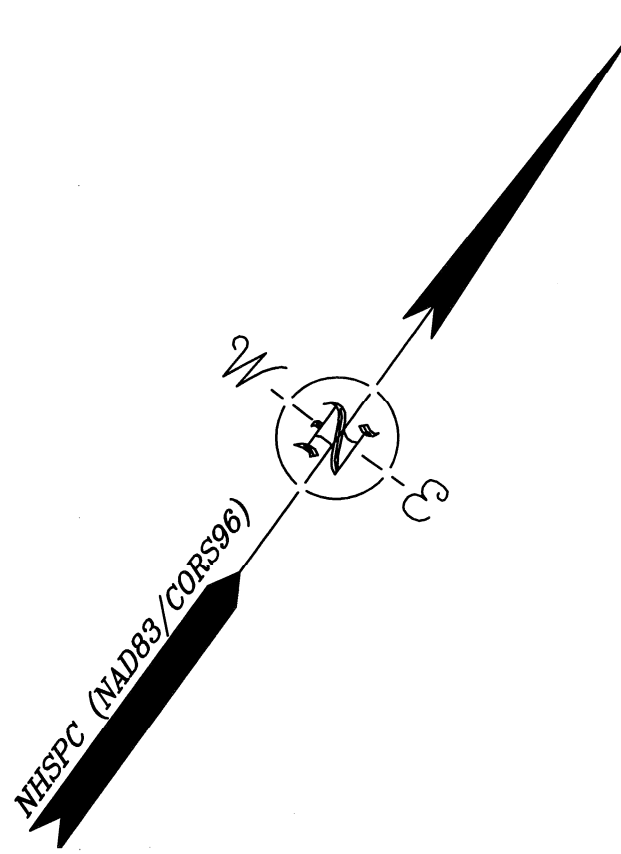
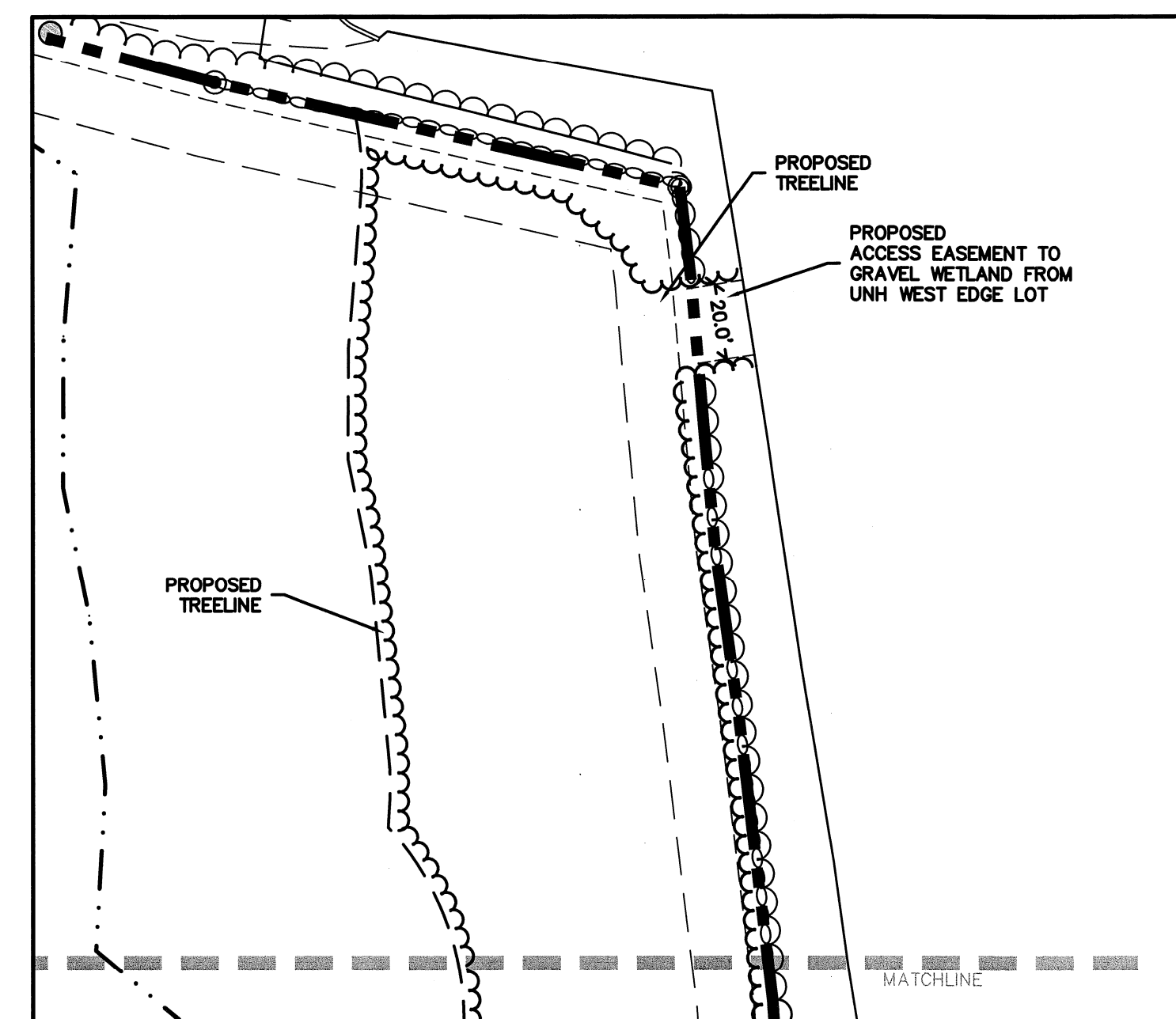


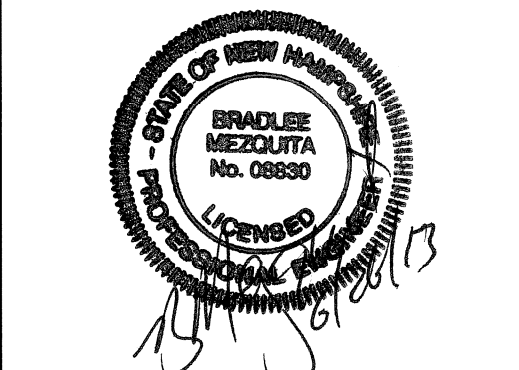
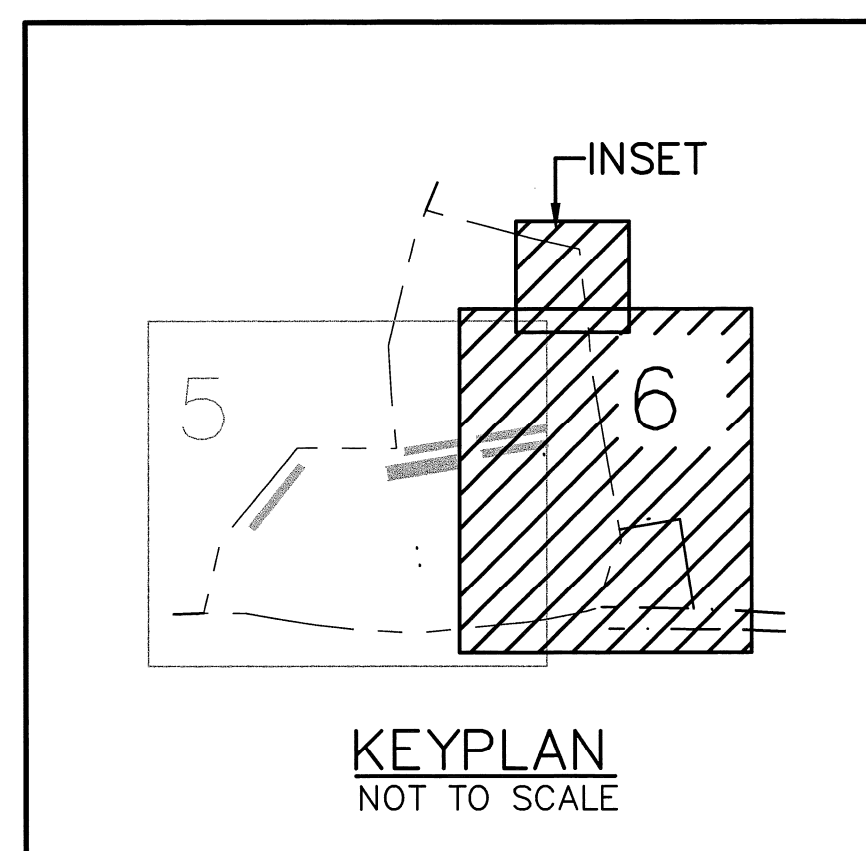
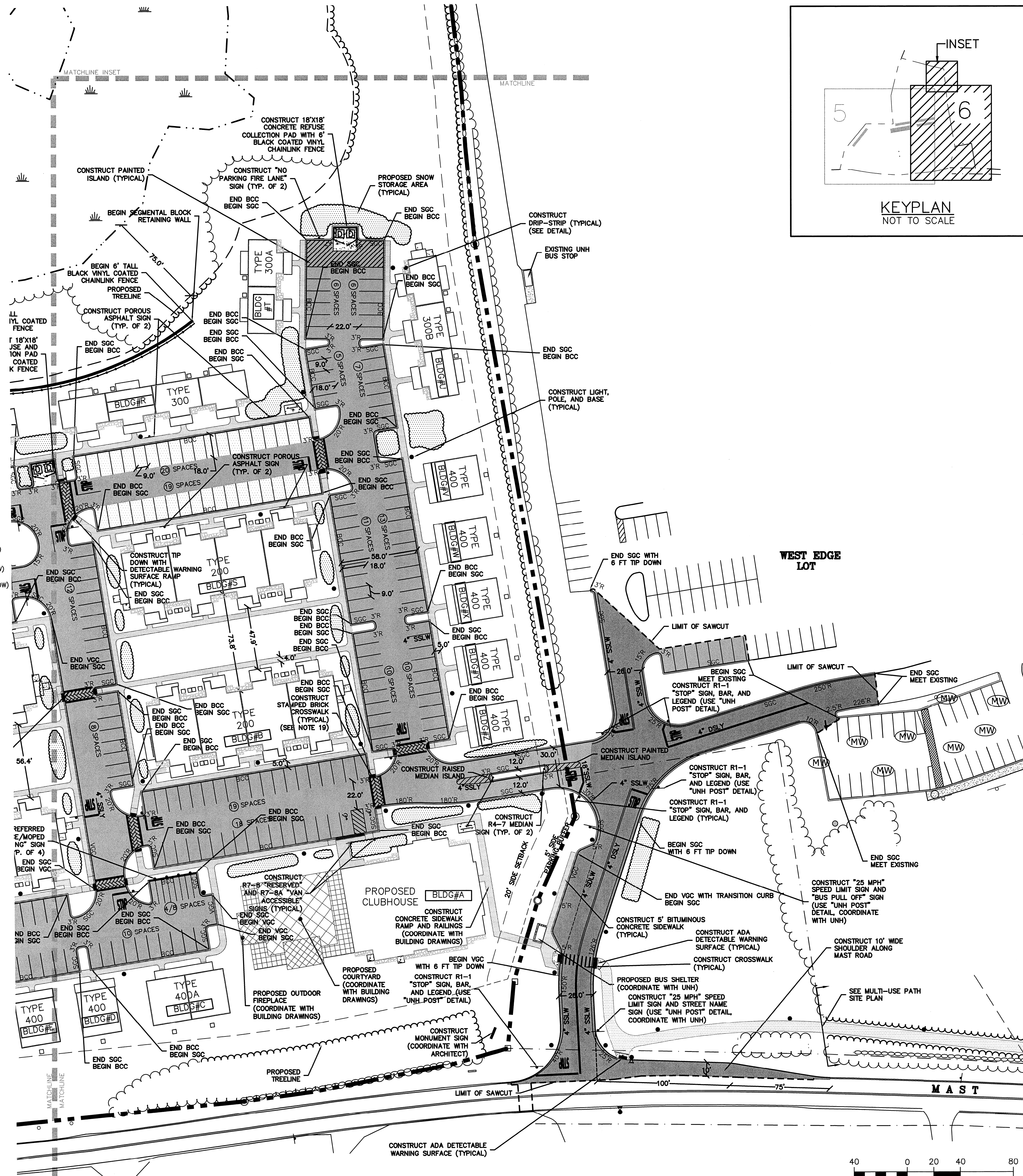
- SITE NOTES:**
1. STRIPE PARKING AREAS AS SHOWN, INCLUDING PARKING SPACES, STOP BARS, HANDICAP SYMBOLS, PAINTED ISLANDS, CROSS WALKS, ARROWS, LEGENDS AND CENTERLINES (ALL MARKINGS EXCEPT CENTERLINE AND MEDIAN ISLANDS TO BE CONSTRUCTED USING WHITE TRAFFIC PAINT, CENTERLINE AND MEDIAN ISLANDS TO BE CONSTRUCTED USING YELLOW TRAFFIC PAINT. ALL TRAFFIC PAINT SHALL MEET THE REQUIREMENTS OF AASHTO M249 TYPE "F").
 2. ALL PAVEMENT MARKINGS AND SIGNS TO CONFORM TO "MANUAL ON UNIFORM TRAFFIC CONTROL DEVICES", "STANDARD ALPHABETS FOR HIGHWAY SIGNS AND PAVEMENT MARKINGS", AND THE AMERICANS WITH DISABILITIES ACT REQUIREMENTS, LATEST EDITIONS.
 3. SEE DETAILS FOR PARKING STALL MARKINGS, HANDICAP SYMBOLS, SIGNS AND SIGN POSTS.
 4. CENTERLINES SHALL BE FOUR (4) INCH WIDE YELLOW LINES. STOP BARS SHALL BE EIGHTEEN (18) INCHES WIDE.
 5. PAINTED ISLANDS SHALL BE FOUR (4) INCH WIDE DIAGONAL LINES AT 3'-0" O.C. BORDERED BY FOUR (4) INCH WIDE LINES.
 6. THE CONTRACTOR SHALL EMPLOY A LICENSED ENGINEER/SURVEYOR TO DETERMINE ALL LINES AND GRADES. DESIGN ENGINEER TO PROVIDE COORDINATES FOR EDGE OF PAVEMENT, PC'S & PT'S.
 7. CLEAN AND COAT VERTICAL FACE OF EXISTING PAVEMENT AT SAWCUT LINE WITH RS-1 EMULSION IMMEDIATELY PRIOR TO PLACING NEW BITUMINOUS CONCRETE.
 8. ALL MATERIALS AND CONSTRUCTION SHALL CONFORM WITH APPLICABLE FEDERAL, STATE AND/OR TOWN CODES & SPECIFICATIONS.
 9. WORK WITHIN MAST ROAD SHALL BE COORDINATED WITH TOWN OF DURHAM AND THE NEW HAMPSHIRE DEPARTMENT OF TRANSPORTATION DEPARTMENT, NHDOT.
 10. CONTRACTOR TO SUBMIT AS-BUILT PLANS ON REPRODUCIBLE MYLARS AND IN DIGITAL FORMAT (.DWG) FILE ON DISK TO THE OWNER AND ENGINEER UPON COMPLETION OF THE PROJECT. AS-BUILTS SHALL BE PREPARED AND CERTIFIED BY A LICENSED LAND SURVEYOR OR PROFESSIONAL ENGINEER.
 11. SEE ARCHITECTURAL DRAWINGS FOR ALL CONCRETE PADS & SIDEWALKS ADJACENT TO BUILDING.
 12. ALL WORK SHALL CONFORM TO THE TOWN OF DURHAM DEPARTMENT OF PUBLIC WORKS, STANDARD SPECIFICATIONS.
 13. CONTRACTOR TO PROVIDE BACKFILL AND COMPACTION AT CURB LINE AFTER CONCRETE FORMS FOR SIDEWALKS AND PADS HAVE BEEN STRIPPED. COORDINATE WITH BUILDING CONTRACTOR.
 14. ALL LIGHT POLE BASES NOT PROTECTED BY A RAISED CURB SHALL BE PAINTED YELLOW.
 15. COORDINATE ALL WORK ADJACENT TO BUILDING WITH BUILDING CONTRACTOR.
 16. CONTRACTOR SHALL BE RESPONSIBLE FOR OBTAINING RETAINING WALL DESIGN FROM WALL MANUFACTURERS, AND SUBMITTING DESIGN TO ENGINEER FOR APPROVAL PRIOR TO COMMENCING CONSTRUCTION. CONTRACTOR SHALL FURNISH ALL LABOR, MATERIALS AND EQUIPMENT REQUIRED TO CONSTRUCT WALL IN ACCORDANCE WITH DESIGN APPROVED BY THE ENGINEER. RETAINING WALL SHALL BE SEGMENTED BLOCK WALL SYSTEM AS OUTLINED IN THE SPECIFICATIONS.
 17. ALL DIMENSIONS ARE TO THE FACE OF CURB UNLESS OTHERWISE NOTED.
 18. SNOW STORAGE AREAS SHALL BE AS SHOWN ON SITE PLANS. IF THESE AREAS ARE EXCEEDED, SNOW SHALL BE MOVED TO THE GRAVEL WETLAND OR OFF-SITE IN ACCORDANCE WITH APPLICABLE LOCAL, STATE AND FEDERAL REGULATIONS. SNOW BANKS SHALL NOT ENDOURCH INTO ACCESS ROADS.
 19. STAMPED ASPHALT CROSSWALKS SHALL BE "STREET PRINT®" OR APPROVED EQUAL LAYOUT, PATTERN AND DESIGN SHALL BE COORDINATED WITH OWNER.



| LEGEND | |
|--------|---|
| | PROPERTY LINE |
| | ABUTTER LINE |
| | WETLAND SETBACK LINE |
| | PARKING SETBACK LINE |
| | BUILDING SETBACK LINE |
| | EDGE OF WETLAND |
| | PROPOSED FENCE |
| | PROPOSED GUARDRAIL |
| | PROPOSED ACCESSIBLE PARKING SPACE |
| | PROPOSED SIGN |
| | PROPOSED STOP BAR AND LEGEND |
| | PROPOSED PAINT STRIPING |
| | PROPOSED CONCRETE PAD |
| | PROPOSED BITUMINOUS CONCRETE SIDEWALK |
| | PROPOSED SNOW STORAGE AREAS |
| | PROPOSED BRICK PAVEMENT CROSSWALK |
| | PROPOSED TREELINE |
| | EXISTING TREELINE |
| | 9' x 18' PROPOSED PARKING SPACE |
| | 8.5' x 16' PROPOSED COMPACT PARKING SPACE |
| | {SIZE IN INCHES} SINGLE SOLID LINE (COLOR W=WHITE, Y=YELLOW) |
| | {SIZE IN INCHES} DOUBLE SOLID LINE (COLOR W=WHITE, Y=YELLOW) |
| | {SIZE IN INCHES} SINGLE DASHED LINE (COLOR W=WHITE, Y=YELLOW) |
| | PROPOSED VERTICAL GRANITE CURB |
| | PROPOSED SLOPED GRANITE CURB |
| | PROPOSED LIGHT POLE BASE |
| | PROPOSED DUMPSTER BIN/RECYCLING BIN |
| | PROPOSED ADA DETECTABLE WARNING PANEL |
| | PROPOSED COVERED BICYCLE STORAGE |
| | PROPOSED COVERED VERTICAL BICYCLE STORAGE |
| | PROPOSED STANDARD DUTY PAVEMENT SECTION |
| | PROPOSED HEAVY DUTY PAVEMENT SECTION |
| | PROPOSED POROUS PAVEMENT SECTION |



INSET
SCALE: 1" = 40'



Peak Campus Development, LLC
The Lodges at West Edge
Durham, NH

| Mark | Date | Description |
|------|----------|----------------------------|
| G | 6/21/13 | REVISED FOR FINAL APPROVAL |
| F | 6/11/13 | ISSUED FOR BUILDING PERMIT |
| E | 4/17/13 | REVISED PER NHDOT COMMENTS |
| D | 01/23/13 | FOR NHDOT SUBMISSION |
| C | 11/11/12 | REVISED FOR PB SUBMISSION |
| B | 9/26/12 | REVISED FOR PB SUBMISSION |
| A | 8/22/12 | PB SUBMISSION |

PROJECT NO: P0637
FILE: P0637_SITE.dwg
DRAWN BY: KAM/SLK1
CHECKED: JMP2
APPROVED BY: GMM

SITE PLAN
SCALE: AS SHOWN
SHEET 6