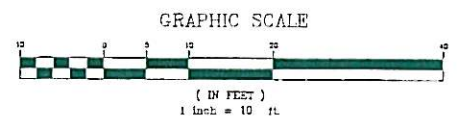
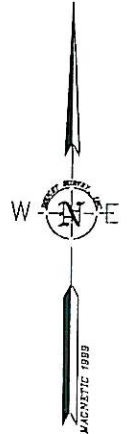


MADBURY ROAD



<p>MJS ENGINEERING, PC 5 Railroad St., P.O. Box 359 Durham, NH 03824 Phone: (603) 850-9375, Fax: (603) 859-4827 E-MAIL: MJS@MJS-ENGINEERING.COM</p>		<p>CONCEPTUAL SITE PLAN #1 prepared for ISLAND DIVERSIFIED LLC (TAX MAP 2, LOT 12-5 & 12-6) MATHES TERRACE DURHAM, NH</p>	<p>DATE: 7/20/13 SCALE: 1"=10' DESIGNED BY: MJS/MAS DRAWN BY: MJS APPROVED BY: MJS DWG FILE:</p>	<p>SEAL</p>	<p>NO.</p>	<p>DATE</p>	<p>INT.</p>
<p>JOB: 13-023</p>		<p>CP1</p>					





MATHES TERRACE ELEVATION

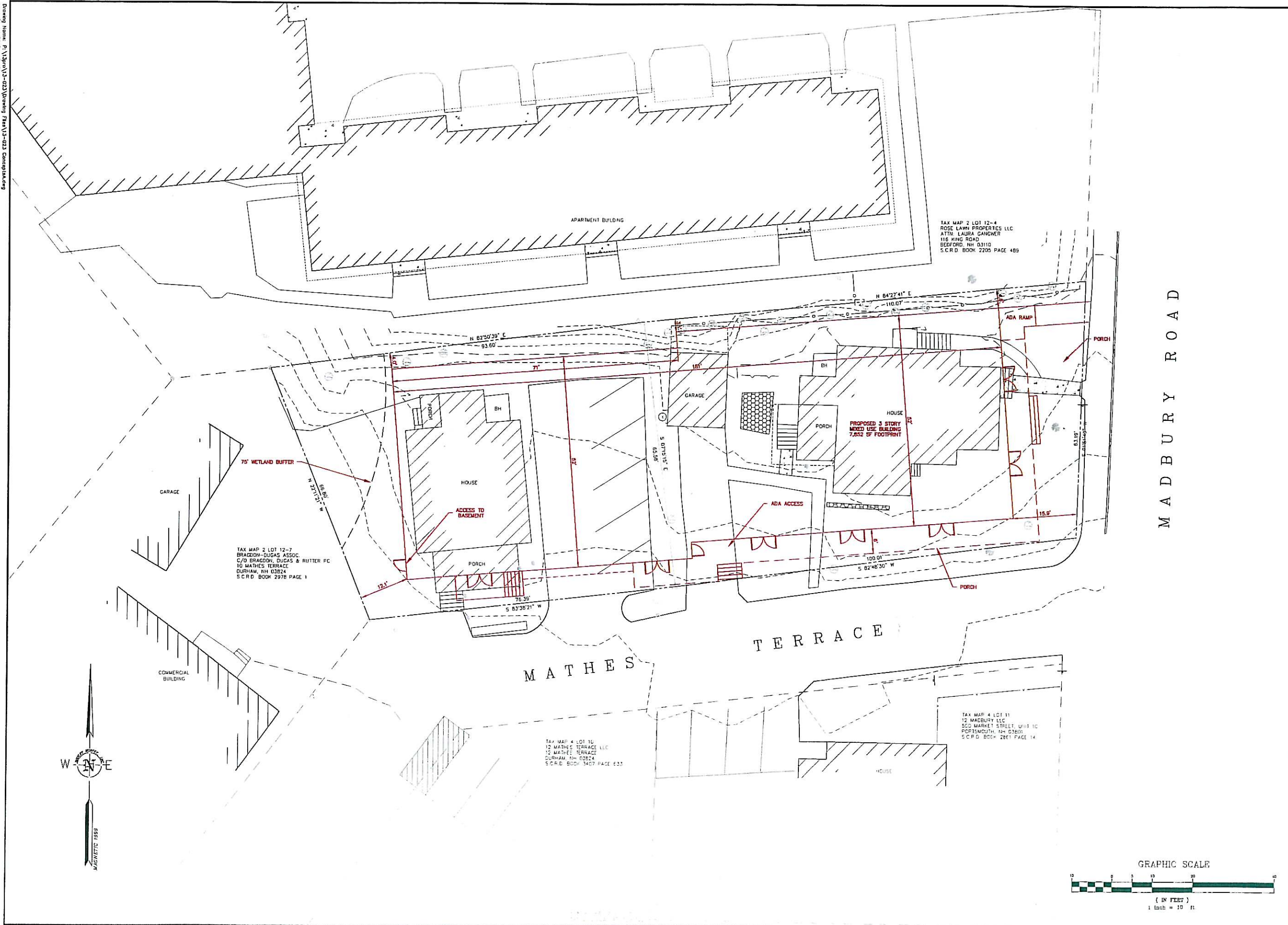
1/8" = 1'-0"



MADBURY ROAD ELEVATION

1/8" = 1'-0"

Drawing Name: 13-023 Conceptual Plan 13-023
 Date: 03/14/2013 - 1:15pm



MADBURY ROAD

MATHES TERRACE

NO.	REVISIONS	DATE	INT.

DATE: 7/30/13
 SCALE: 1"=10'
 DESIGNED BY: MJS/MAS
 DRAWN BY: MJS
 APPROVED BY: MJS
 DWE FILE:

CONCEPTUAL SITE PLAN #2
 prepared for
 ISLAND DIVERSIFIED LLC
 (TAX MAP 2, LOT 12-5 & 12-6)
 MATHES TERRACE DURHAM, NH

MJS ENGINEERING, PC
 CIVIL, ENVIRONMENTAL, GEOTECHNICAL ENGINEERING
 5 RAINBOW ST., P.O. BOX 359
 DURHAM, NH 03824
 Phone: (603) 853-4171 FAX: (603) 853-4172
 E-MAIL: MJS@MJS-ENGINEERING.COM

JOB: 13-023

CP2





MATHES TERRACE ELEVATION

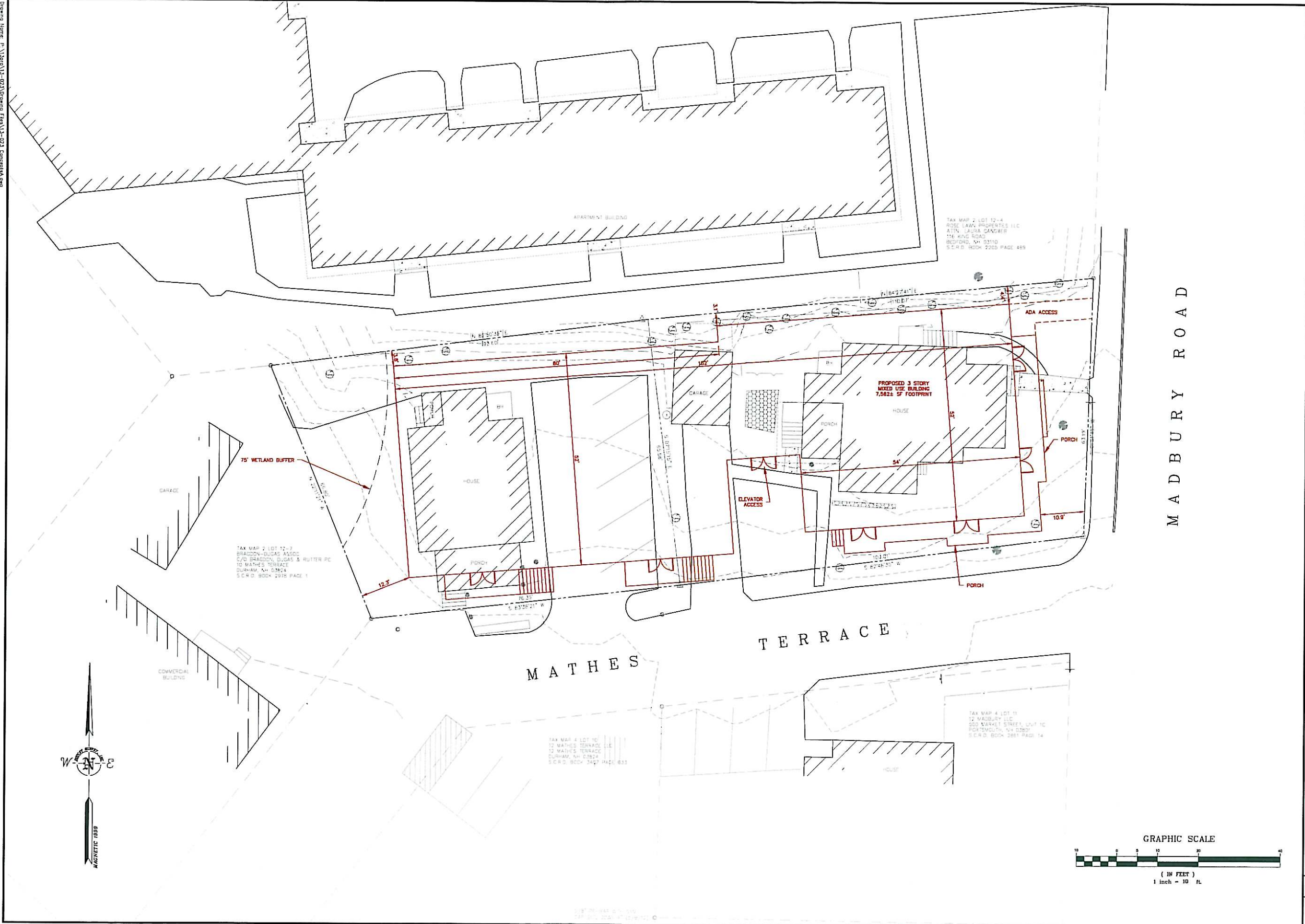
1/8" = 1'-0"



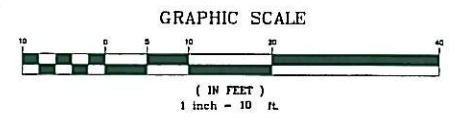
MADBURY ROAD ELEVATION

1/8" = 1'-0"

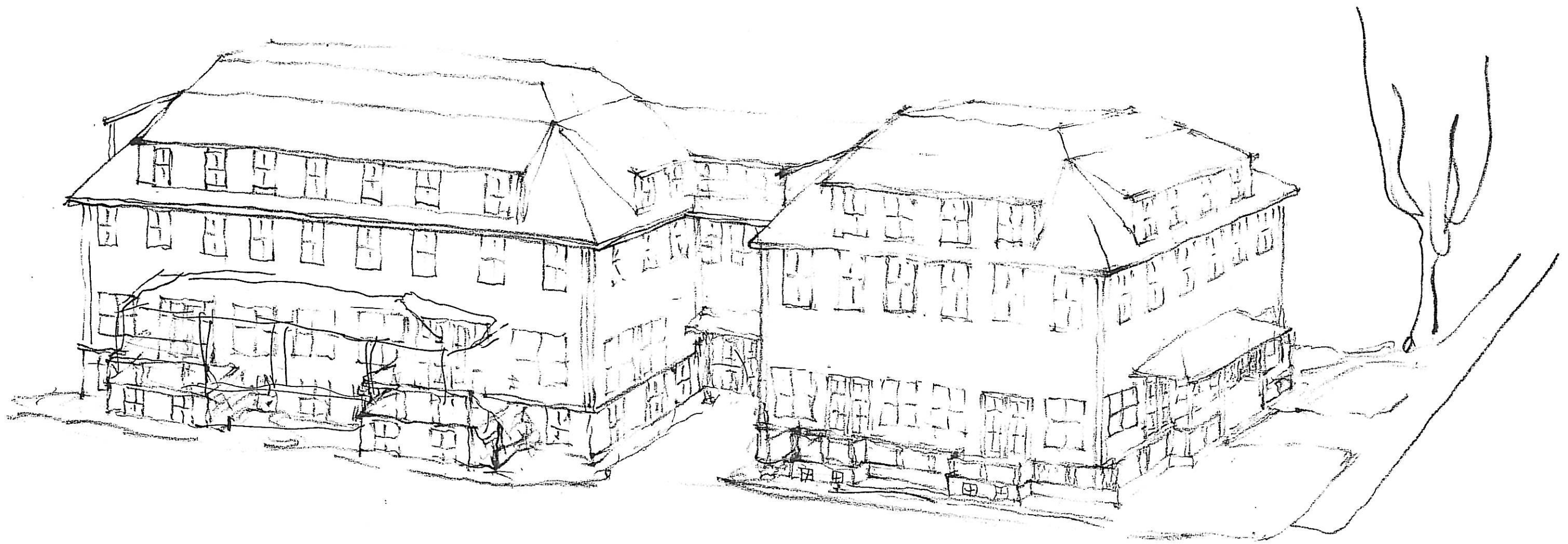
Drawing Name: P:\1309\13-023\Drawing Files\13-023 Conceptual.dwg
Thu, 22 Aug 2013 - 3:45pm



MADBURY ROAD



<p>CONCEPTUAL SITE PLAN prepared for ISLAND DIVERSIFIED LLC (TAX MAP 2, LOT 12-5 & 12-6) MATHES TERRACE DURHAM, NH</p>	<p>DATE: 8/7/13 SCALE: 1"=10' DESIGNED BY: MJS/MJS DRAWN BY: MJS APPROVED BY: MJS DWG FILE:</p>	<p>SEAL</p>	<p>NO.</p>	<p>DATE</p>	<p>INT.</p>
<p>MJS ENGINEERING, PC 5 HALEBURG ST., P.O. Box 359 PORTSMOUTH, NH 02871 PHONE: (603) 424-1000 FAX: (603) 424-1027 E-MAIL: MJS@MJS-ENGINEERING.COM</p>					
<p>JOB: 13-023</p>					
<p>CP3</p>					





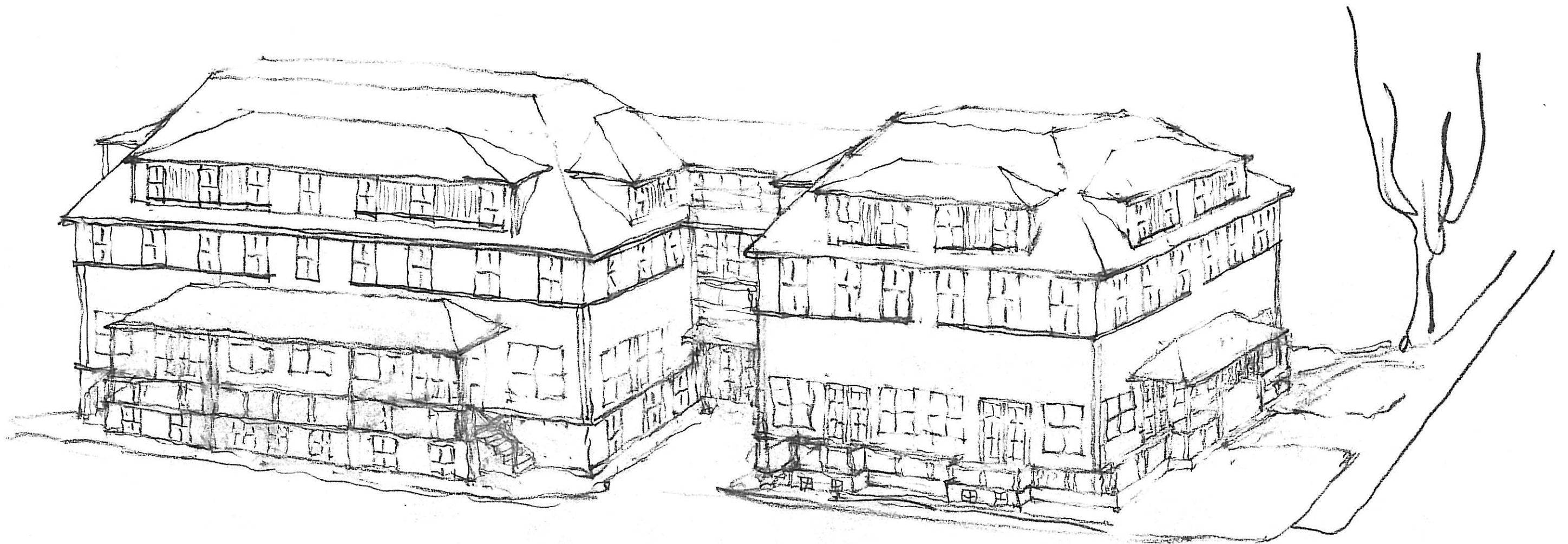
MATHES TERRACE ELEVATION

1/8" = 1'-0"



MADBURY ROAD ELEVATION

1/8" = 1'-0"



3 A



MATHES TERRACE ELEVATION

1/8" = 1'-0"



MADBURY ROAD ELEVATION

1/8" = 1'-0"