

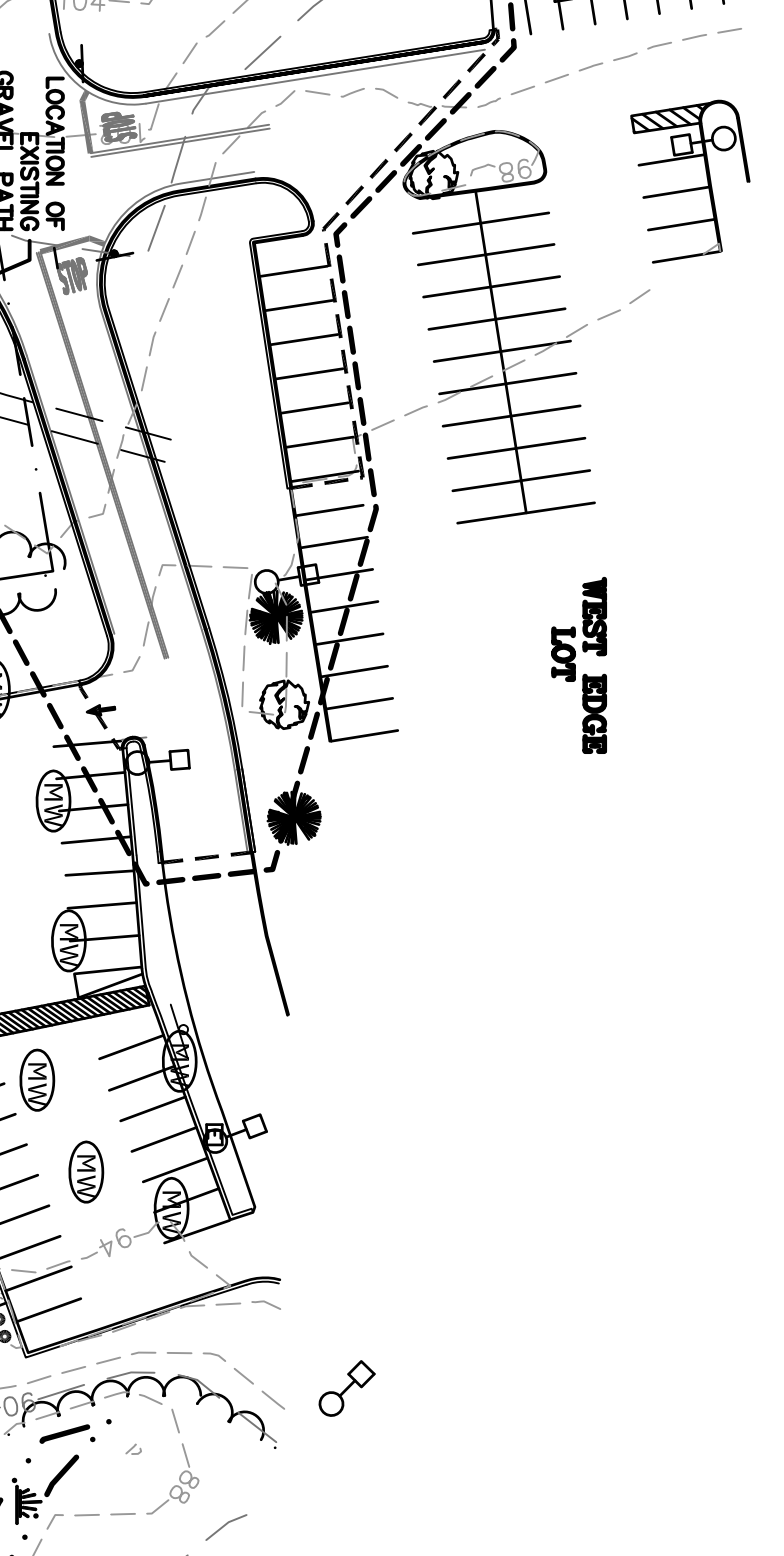
- LANDSCAPE PLAN NOTES:**
1. THE CONTRACTOR SHALL FINISH AND PLANT ALL PLANTS IN QUANTITIES AS SHOWN ON THIS PLAN. NO SUBSTITUTIONS WILL BE PERMITTED UNLESS APPROVED BY OWNER. ALL PLANTS SHALL BE NURSERY GROWN.
 2. ALL PLANTS SHALL BE NURSERY GROWN AND PLANTS AND WORKMANSHIP SHALL CONFORM TO THE AMERICAN ASSOCIATION OF NURSERMEN STANDARDS, INCLUDING BUT NOT LIMITED TO SIZE, HEALTH, SHAPE, ETC., AND SHALL BE SUBJECT TO THE APPROVAL OF THE LANDSCAPE ARCHITECT PRIOR TO ARRIVAL ON-SITE AND AFTER PLANTING.
 3. PLANT STOCK SHALL BE GROWN WITHIN THE HARDNESS ZONES 4 THRU 7 ESTABLISHED BY THE PLANT HARDNESS ZONE MAP, MISCELLANEOUS PUBLICATIONS NO. 814, THE AGRICULTURAL RESEARCH SERVICE, UNITED STATES DEPARTMENT OF AGRICULTURE, LATEST EDITION.
 4. ALL PLANTS MUST BE MOVED WITH THE ROOT SYSTEMS AS SOLID UNITS WITH BALLS OF EARTH FIRMLY WRAPPED WITH BURLAP. NO PLANTS SHALL BE ACCEPTED WHEN THE BALL OF EARTH SURROUNDING ITS ROOTS HAS BEEN BADLY CRACKED OR COMPACTED. PLANTS MUST BE HELD-IN BY SETTING IN THE GROUND, AND COVERING THE BALLS WITH SOIL AND THEN WATERING. DURING TRANSPORT, ALL PLANT MATERIALS SHALL BE WRAPPED WITH WIND PROOF COVERING.
 5. PLANT MATERIAL SHALL BARE THE SAME RELATIONSHIP TO FINISHED GRADE AS TO THE ORIGINAL PLANTING GRADE PRIOR TO DIGGING.
 6. THE NUMBER OF EACH INDIVIDUAL PLANT TYPE AND SIZE PROVIDED IN THE PLANT LIST OR ON THE PLAN IS FOR THE CONTRACTOR'S CONVENIENCE ONLY. IF A DISCREPANCY EXISTS BETWEEN THE NUMBER OF PLANTS ON THE LABEL AND THE NUMBER OF SYMBOLS SHOWN ON THE DRAWINGS, THE GREATER NUMBER SHALL APPLY.
 7. NO SUBSTITUTION OF PLANT MATERIALS WILL BE ALLOWED WITHOUT THE PRIOR WRITTEN APPROVAL OF THE OWNER'S REPRESENTATIVE AND NOTIFICATION TO THE TOWN.
 8. THE CONTRACTOR SHALL LOCATE, VERIFY, AND MARK ALL EXISTING AND NEWLY INSTALLED UNDERGROUND UTILITIES PRIOR TO ANY LAMN WORK OR PLANTING. ANY CONFLICTS WHICH MIGHT OCCUR BETWEEN PLANTING AND UTILITIES SHALL IMMEDIATELY BE REPORTED TO THE OWNER SO THAT ALTERNATE PLANTING LOCATIONS CAN BE DETERMINED.
 9. ALL DISTURBED AREAS NOT TO BE PAVED OR OTHERWISE TREATED, SHALL RECEIVE SIX (6) INCHES OF LOAM AND SEED. NO FILL SHALL BE PLACED IN ANY WETLAND AREA.

10. THREE (3) INCH BARK MULCH IS TO BE USED AROUND THE TREE AND SHRUB PLANTING AS SPECIFIED IN THE DETAILS WHERE BARK MULCH IS TO BE USED IN A CURBED ISLAND AND THE BARK MULCH SHALL MEET THE TOP INSIDE EDGE OF THE CURB. ALL OTHER AREAS SHALL RECEIVE SIX (6) INCHES OF LOAM AND SEED.
11. IF AN IRRIGATION SYSTEM IS NOT PROVIDED, HOSE BIBS SHALL BE INSTALLED IN SEVERAL LOCATIONS THROUGHOUT THE SITE IN CLOSE PROXIMITY TO THE LANDSCAPE AREAS.
12. SEE PLANTING DETAILS AND SPECIFICATIONS FOR ADDITIONAL REQUIREMENTS.
13. TREE STAKES SHALL REMAIN IN PLACE FOR NO LESS THAN 6 MONTHS AND NO MORE THAN 1 YEAR.
14. PLANTING SHALL BE COMPLETED FROM MARCH 15TH THROUGH JUNE 1ST IN THE SPRING AND AUGUST 15TH THROUGH OCTOBER 1ST IN THE FALL. DECIDUOUS TREES MAY BE PLANTED FROM OCTOBER 15TH THROUGH NOVEMBER 1ST ON OTHER PLANTING DURING JULY AND AUGUST UNLESS SPECIAL PROVISIONS ARE MADE FOR DROUGHT.
15. PARKING AREA PLANTED ISLANDS TO HAVE MINIMUM OF 1'-0" TOPSOIL PLACED TO WITHIN 3 INCHES OF THE TOP OF CURB ELEVATION. REMOVE ALL CONSTRUCTION DEBRIS BEFORE PLACING TOPSOIL.
16. TREES SHALL BE PLANTED IN ACCORDANCE WITH THE LATEST EDITION OF ANSI Z600. TREES, SHRUBS AND OTHER WOOD PLANT MAINTENANCE STANDARDS PRACTICES. ANY TREE BRANCHES THAT INTERFERE WITH STOP SIGNS SHALL BE REMOVED.

17. ALL PLANTS SHALL BE WATERED THOROUGHLY TWICE DURING THE FIRST 24 HOUR PERIOD AFTER PLANTING. ALL PLANTS SHALL BE WATERED WEEKLY OR MORE OFTEN, IF NECESSARY DURING THE FIRST GROWING SEASON.
18. EXISTING TREES AND SHRUBS SHOWN ON THE PLAN ARE TO REMAIN UNDISTURBED. ALL EXISTING TREES AND SHRUBS SHOWN TO REMAIN ARE TO BE PROTECTED WITH 4'-0" SNOW FENCE PLACED AT THE DRY LINE OF THE BRANCHES OR AT FEET MINIMUM FROM THE TREE TRUNK. ANY EXISTING TREE OR SHRUB SHOWN TO REMAIN, WHICH IS REMOVED DURING CONSTRUCTION, SHALL BE REPLACED BY A TREE OF COMPARABLE SIZE AND SPECIES TREE OR SHRUB.
19. THE CONTRACTOR SHALL GUARANTEE ALL PLANTINGS TO BE IN GOOD HEALTHY, FLOURISHING AND ACCEPTABLE CONDITION FOR A PERIOD OF (1) YEAR BEGINNING AT THE DATE OF ACCEPTANCE OF SUBSTANTIAL COMPLETION. ALL GRASS, TREES AND SHRUBS THAT, IN THE OPINION OF THE LANDSCAPE ARCHITECT, SHOW LESS THAN 80% HEALTHY GROWTH AT THE END OF (1) YEAR PERIOD SHALL BE REPLACED BY THE CONTRACTOR.
20. LANDSCAPE MAINTENANCE AFTER THE ONE YEAR GUARANTEE PERIOD (INCLUDING WATERING DURING PERIODS OF DROUGHT) SHALL BE THE RESPONSIBILITY OF THE OWNER.
21. PRE-PURCHASE PLANT MATERIAL AND ARRANGE FOR DELIVERY TO MEET PROJECT SCHEDULE AS REQUIRED. IT MAY BE NECESSARY TO PRE-DIG CERTAIN SPECIES WELL IN ADVANCE OF ACTUAL PLANTING DATES.
22. TRANSPLANTED APPLE TREES MAY BE SUBSTITUTED WITH NEW TREES WITH PRIOR APPROVAL BY THE DURHAM DPW.

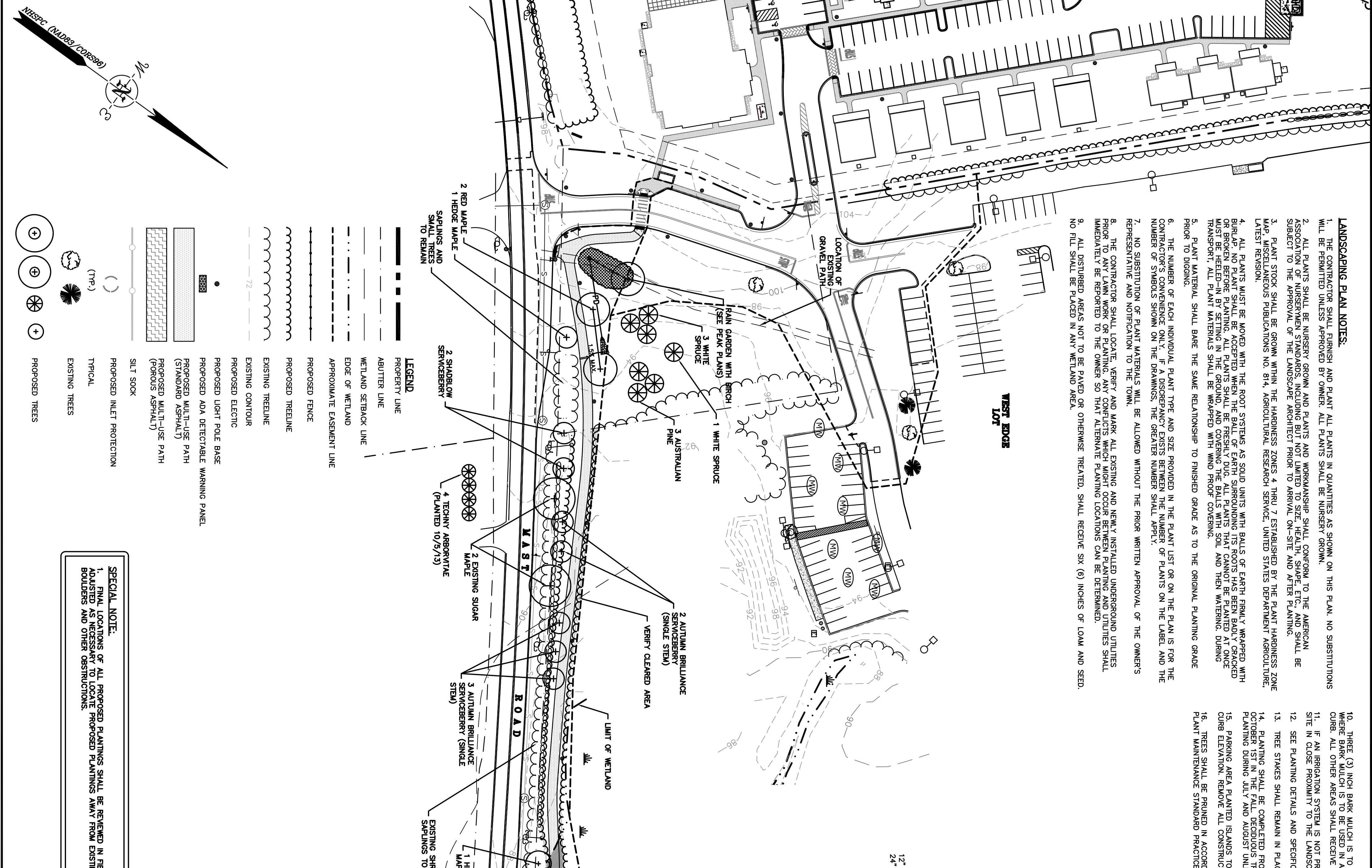
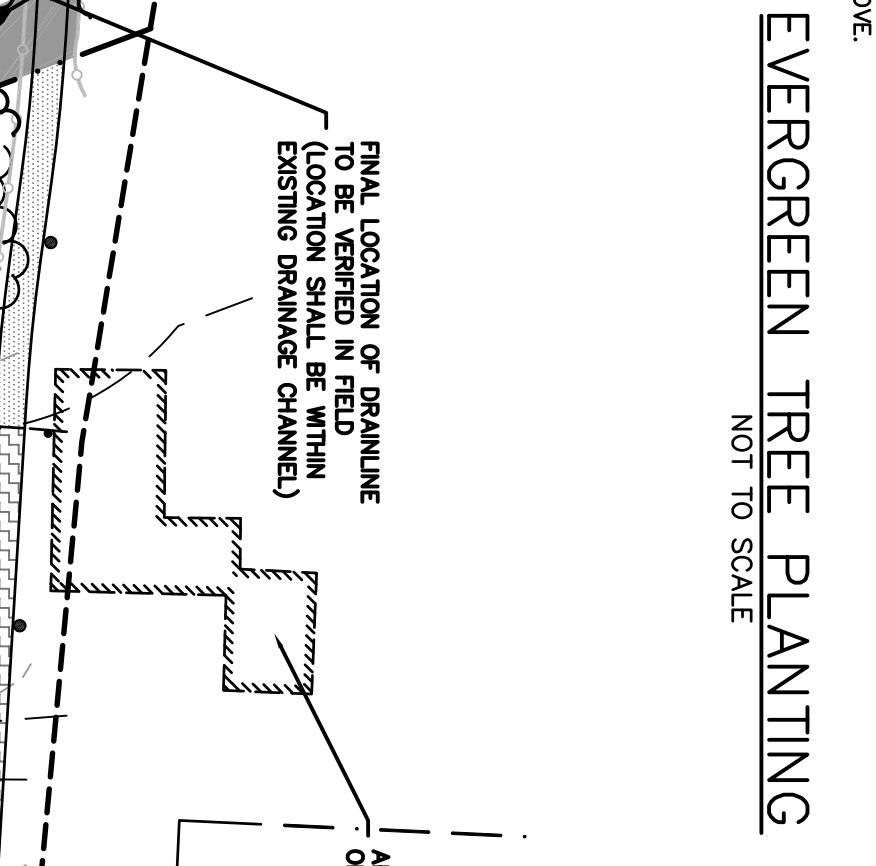
EVERGREEN TREE PLANTING
NOT TO SCALE

NOTE:
PLANT AT SAME DEPTH AS PREVIOUSLY PLANTED IN NURSERY, OR WITHIN 2" ABOVE.



DECIDUOUS PLANTING
NOT TO SCALE

NOTE:
PLANT AT SAME DEPTH AS PREVIOUSLY PLANTED IN NURSERY, OR WITHIN 2" ABOVE.



PLANT SCHEDULE:

TREES	COMMON NAME	BOTANICAL NAME	SIZE	REMARKS	QUANTITY
	RED MAPLE	A. RUBRUM	1-1/2" CALIPER	183	2
	WHITE SPRUCE	P. MARCMILLERIANA	1-1/2" CALIPER	183	2
	AUTUMN BRILLIANCE SERVICEBERRY	A. BRILLIANCE	1-1/2" CALIPER	183	2
	SUGAR MAPLE	A. SACCARINUM	1-1/2" CALIPER	183	2
	YEW	TAXUS CANADENSIS	3" HEIGHT	183	4
	SHRUBS				
	YEW	TAXUS CANADENSIS	3" HEIGHT	183	4

SPECIAL NOTE:
1. FINAL LOCATIONS OF ALL PROPOSED PLANTINGS SHALL BE REVIEWED IN FIELD AND ADJUSTED AS NECESSARY TO LOCATE PROPOSED PLANTINGS AWAY FROM EXISTING TREES, Boulders AND OTHER OBSTRUCTIONS.

NO.	DATE	DESCRIPTION
A	10/18/13	ISSUED TO TOWN FOR APPROVAL
B	11/14/13	REVISION
C	12/11/13	REVISION
D	1/14/14	REVISION
E	1/14/14	REVISION
F	1/14/14	REVISION
G	1/14/14	REVISION
H	1/14/14	REVISION
I	1/14/14	REVISION
J	1/14/14	REVISION
K	1/14/14	REVISION
L	1/14/14	REVISION
M	1/14/14	REVISION
N	1/14/14	REVISION
O	1/14/14	REVISION
P	1/14/14	REVISION
Q	1/14/14	REVISION
R	1/14/14	REVISION
S	1/14/14	REVISION
T	1/14/14	REVISION
U	1/14/14	REVISION
V	1/14/14	REVISION
W	1/14/14	REVISION
X	1/14/14	REVISION
Y	1/14/14	REVISION
Z	1/14/14	REVISION

DRAWN BY: CM/JCT
CHECKED BY: JMG2
APPROVED BY: GMM

SCALE: AS SHOWN

1 OF 1

Peak Campus Development, LLC
The Lodges at West Edge
Durham, NH