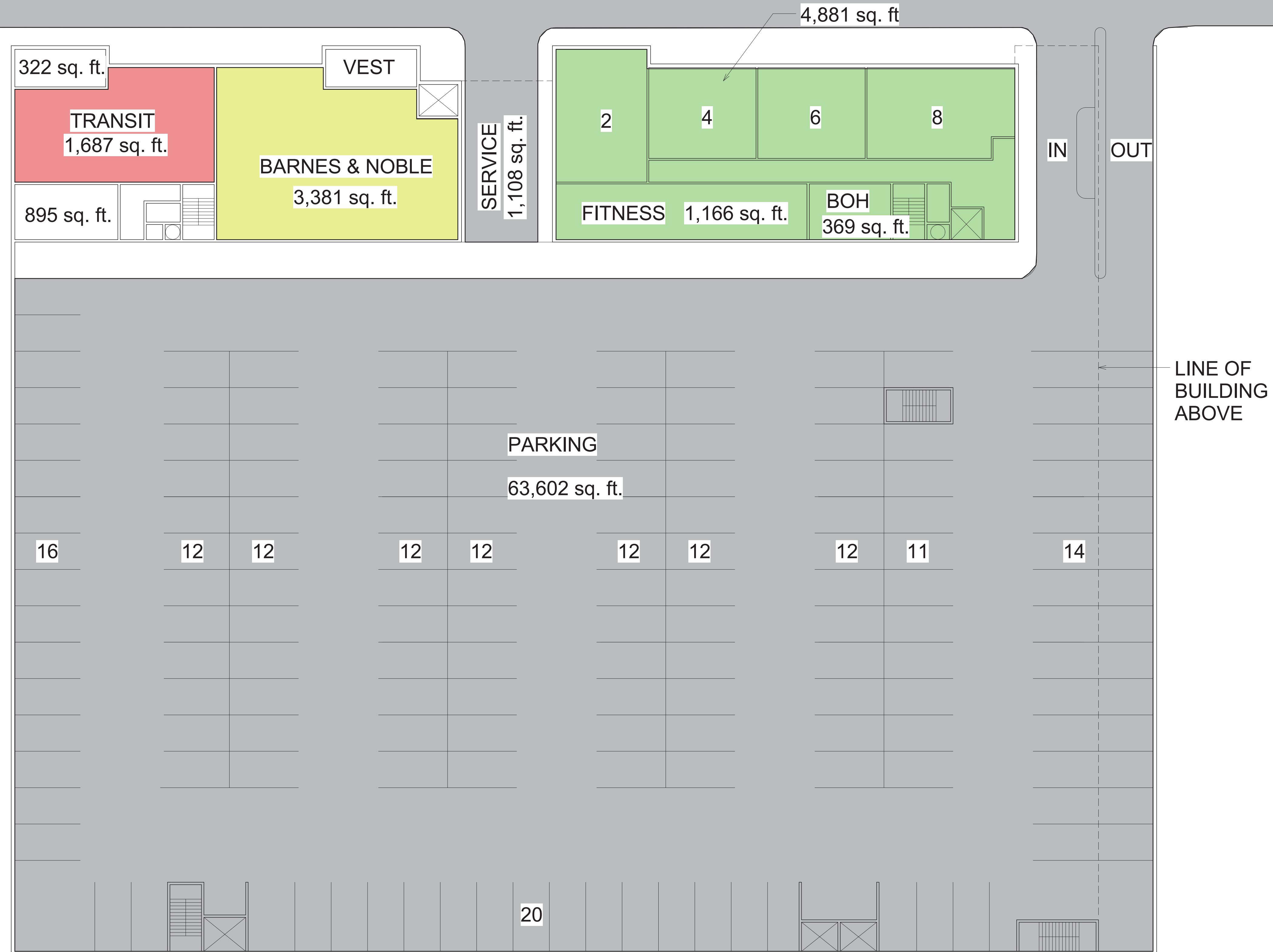


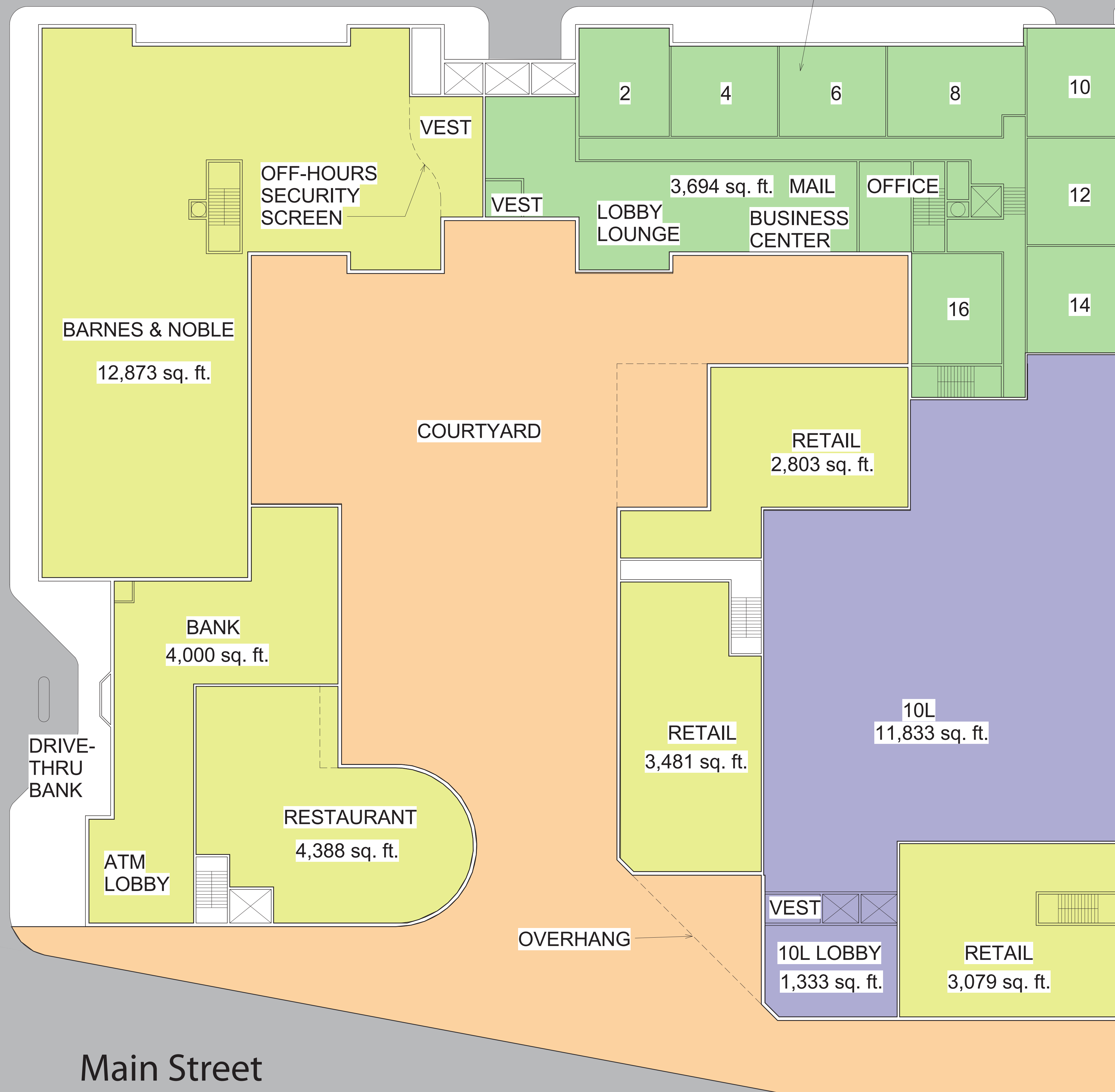
# Pettee Brooke Road

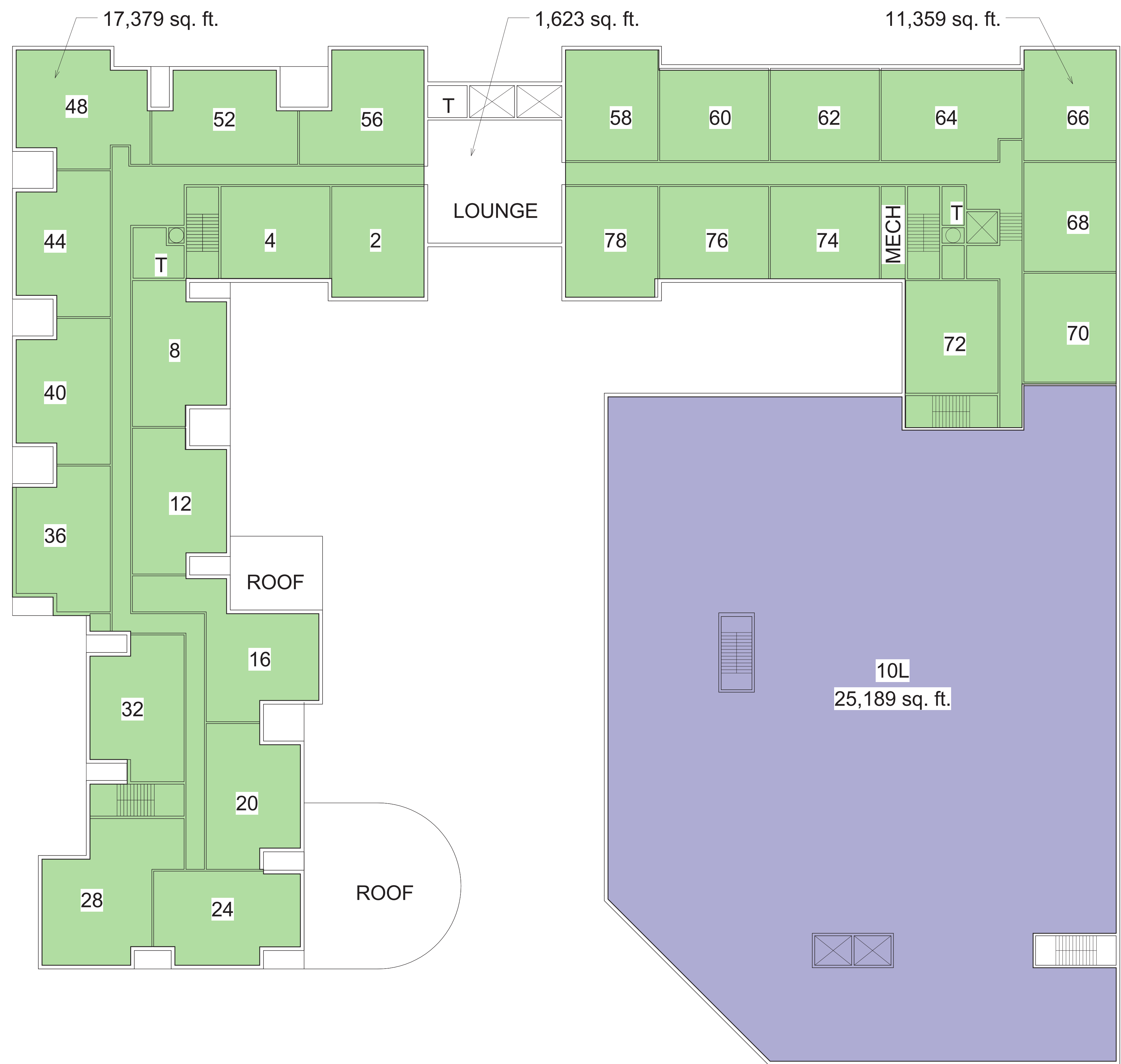


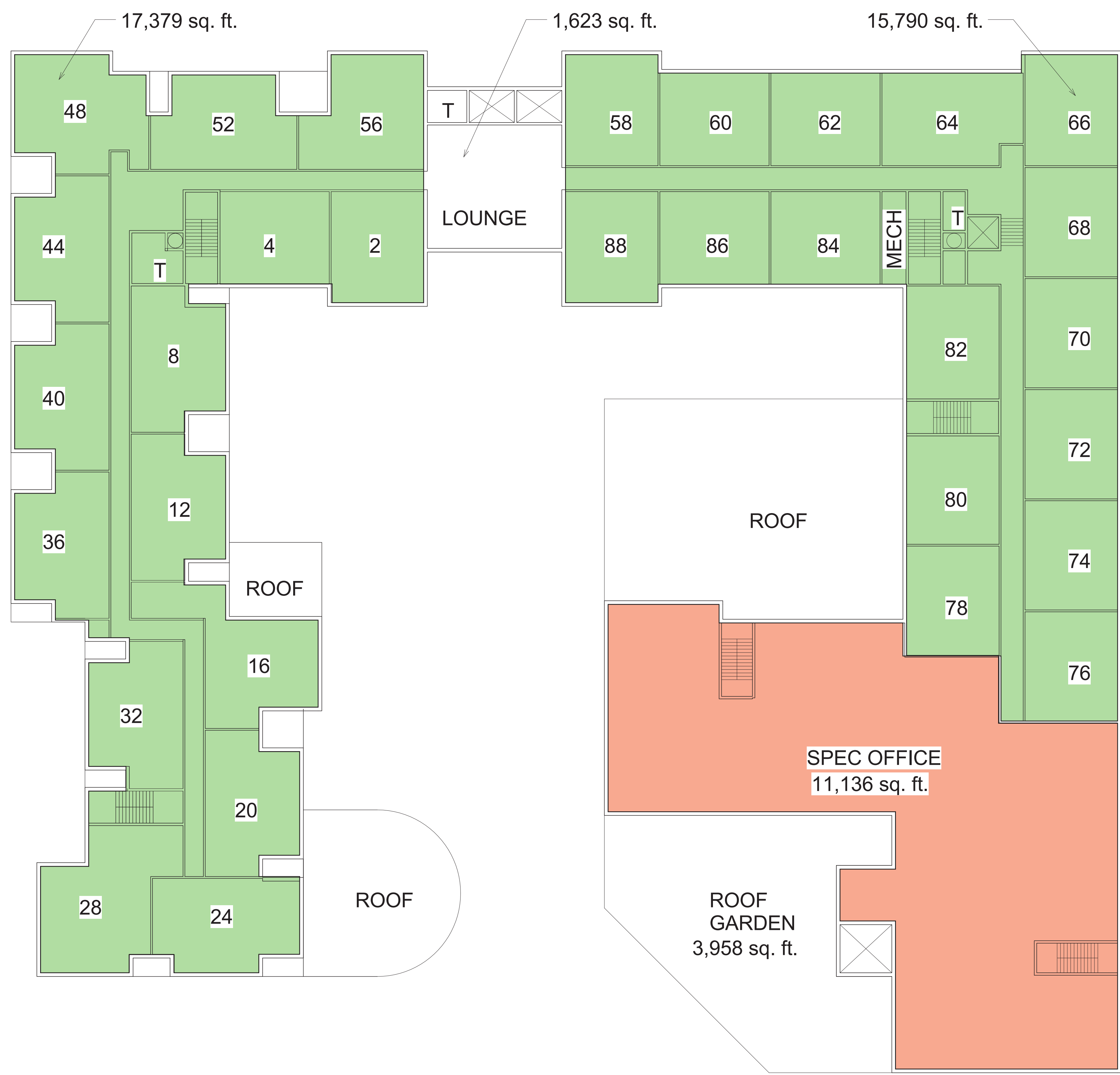
① Level B1  
1/16" = 1'-0"

Pettee Brooke Road

8,784 sq. ft.

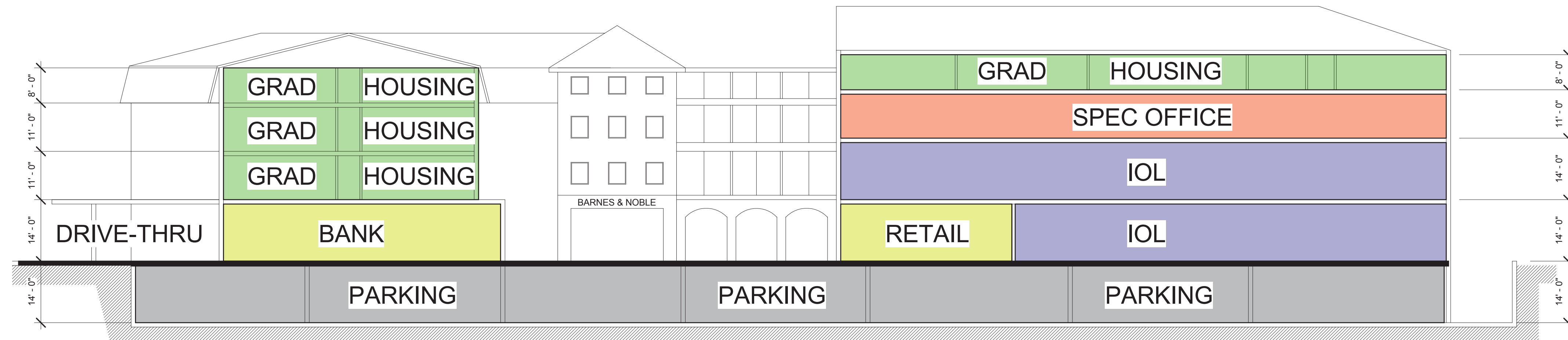




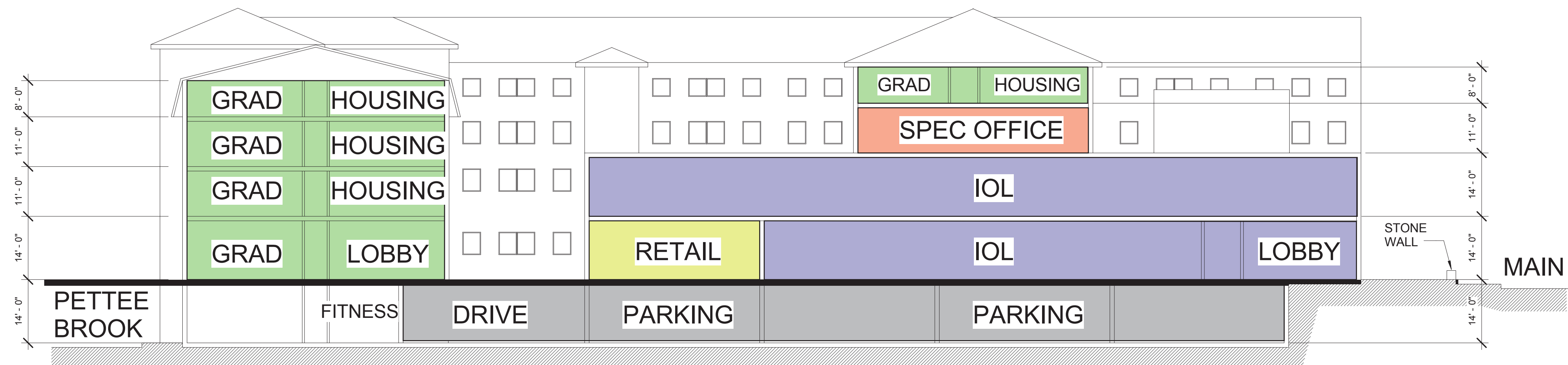




① Level 4  
 1/16" = 1'-0"



① CROSS SECTION A-A (LOOKING TOWARD PETTEE BROOK)  
1/16" = 1'-0"



② LONGITUDINAL SECTION B-B (LOOKING TOWARD DOWNTOWN)  
1/16" = 1'-0"