



**Public Service
of New Hampshire**

60 W. Pennacook Street, Manchester, NH 03101

Public Service Company of New Hampshire
P.O. Box 330
Manchester, NH 03105-0330
(603) 669-4000

The Northeast Utilities System

RECEIVED
Town of Durham
JUN 13 2014

Planning, Assessing
and Zoning

June 12, 2014

Planning Board
Town of Durham
15 Newmarket Road
Durham, NH 03824

Dear Planning Board Members:

This letter is to inform the Town of Durham that Public Service of New Hampshire is planning to trim and remove trees and brush adjacent to and beneath some of its power lines within the town. This work is necessary to insure the safe distribution of power and to improve the reliability of electric service for our customers

According to PSNH records, Bennett Road, Durham Point Road, and Bay Road have been designated as scenic roads by the Town. Please consider this letter a request from PSNH for a public hearing for the trimming and removal of trees and brush along this road within the proposed work area pursuant to RSA 231:158. Please inform this office of the time and place of said meeting so that we may have a representative present. A map highlighting the area to be trimmed is enclosed.

PSNH specifications call for the removal of brush and limbs 6" in diameter which are located within eight feet to the side, ten feet below or fifteen above conductors. Larger trees or limbs which present a threat to PSNH lines or other equipment because of decay or other defect will be removed on a case by case basis. A list of failure prone trees identified for removal by PSNH has been included. All trees are marked with a blue/white checkered ribbon. I am available to conduct a "walk-down" of all locations where trees have been identified for removal, if necessary.



**Public Service
of New Hampshire**

60 W. Pennacook Street, Manchester, NH 03101

Public Service Company of New Hampshire
P.O. Box 330
Manchester, NH 03105-0330
(603) 669-4000

The Northeast Utilities System

All work will be performed in accordance with accepted arboricultural standards. PSNH has contracted with Asplundh Tree Expert to perform the actual clearing of trees. PSNH requires that our clearing contractor contact each landowner where trees are to be trimmed or removed prior to commencement of work on that property. Individual concerns will be addressed at this time.

All brush and limbs cut on roadside locations will be chipped. In wooded, undeveloped locations, these chips may be dispersed into the woods taking care not to allow chips to accumulate in piles or in ditches. Near developed land, the chips will be blown into a truck and disposed of off site. The chips make good mulch and are often given to nearby property owners for landscaping purposes. If a central dumping location could be arranged, PSNH would be happy to make any unclaimed chips available to the Town at no cost. Brush and limbs cut on inaccessible lines will be stacked to the side of the right-of way and cut low to the ground. All wood will be left on site unless otherwise directed by the landowner.

Work is scheduled to begin in the near future.

If you have any questions or comments, please feel free to contact me at the above address, by telephone at 603-634-3469 or by e-mail at Robert.Berner@nu.com.

Thank you for your concern and assistance.

Respectfully,

Robert J. Berner
Eastern Region Arborist
Public Service Co. of N.H.



Failure Prone Trees identified for possible removal

Located along Scenic Roads in the Town of Durham

Bay/Durham Point Rd.

Pole

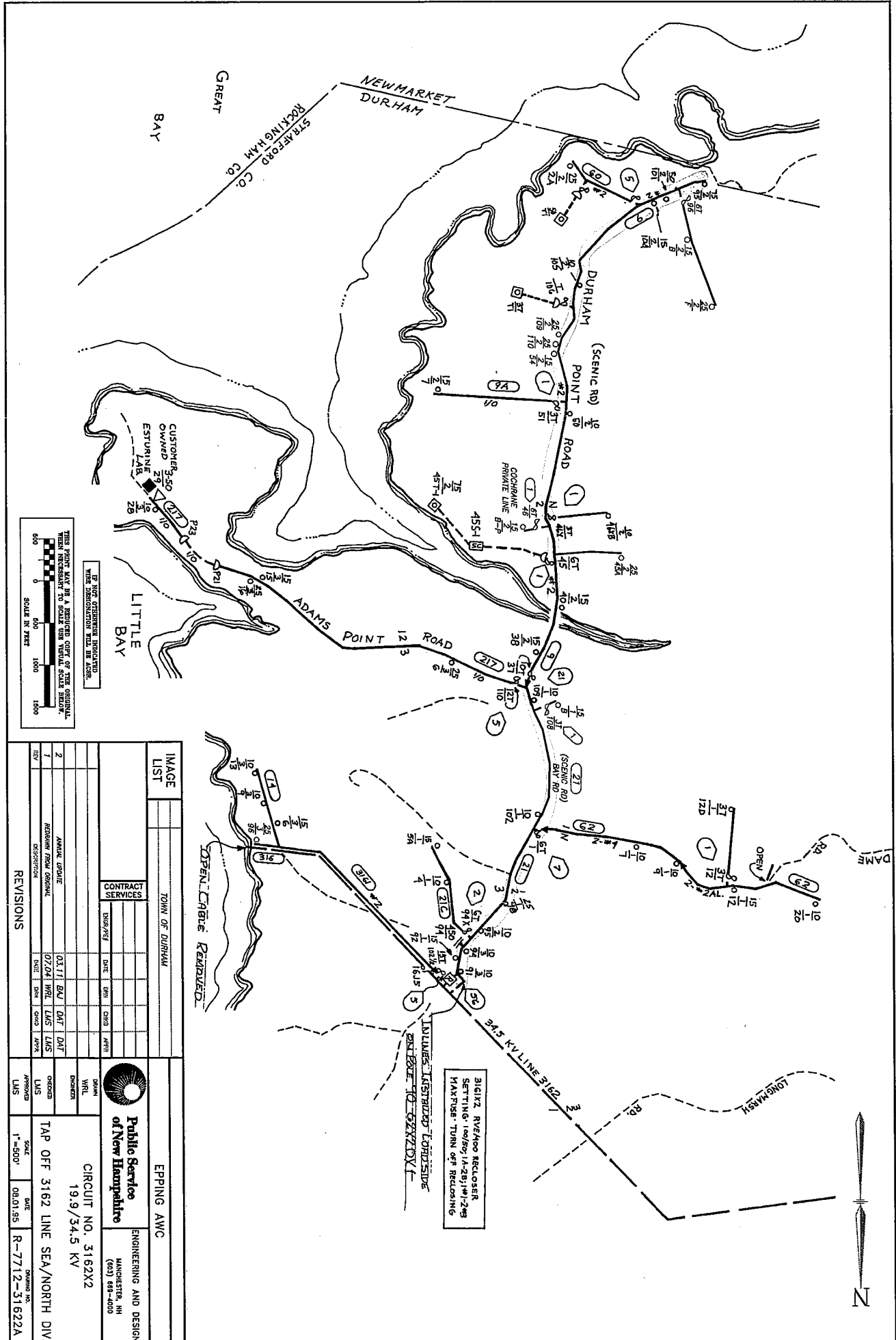
21/38-39	declining ash
21/39-40	dead pine, opposite side of road
21/53-54	declining maple, 1' from phase
21/60	declining maple, 1' from phase
21/63-64	previously topped oak
21/64-64x	12" hollow oak
21/92-92Y	clump of dead elms 6"
21/104-105	dead maple

Bennett Rd.

Pole

64/9-8	Twin lead oak, pushing on phase
64/7-6	cherry with large cavity

**** all trees have been identified with blue/white checkered ribbon**



THIS PRINT MAY BE A DERIVED COPY OF THE ORIGINAL. SCALE IN FEET. IF NOT OTHERWISE INDICATED, WHERE DIMENSIONS WILL BE AS SHOWN.

IMAGE LIST		TOWN OF DURHAM		EPPING AWC							
2	ANNUAL UPDATE	03/11	BAU	DATE	DATE						
1	REVISION FROM ORIGINAL	07/24	WRL	LMS	LMS						
REV	DESCRIPTION	DATE	BY	CHKD	APPD						
<table border="1"> <thead> <tr> <th colspan="2">CONTRACT SERVICES</th> </tr> </thead> <tbody> <tr> <td>DATE</td> <td>DESCRIPTION</td> </tr> <tr> <td> </td> <td> </td> </tr> </tbody> </table>						CONTRACT SERVICES		DATE	DESCRIPTION		
CONTRACT SERVICES											
DATE	DESCRIPTION										
<table border="1"> <thead> <tr> <th colspan="2">REVISIONS</th> </tr> </thead> <tbody> <tr> <td> </td> <td> </td> </tr> </tbody> </table>						REVISIONS					
REVISIONS											
		ENGINEERING AND DESIGN MANCHESTER, NH (603) 888-4000		CIRCUIT NO. 3162X2 19.9/34.5 KV							
TAP OFF 3162 LINE SEA/NORTH DIV.		SCALE: 1"=500'		DATE: 08.01.95 DRAWING NO.: R-7712-31622A							

3162Z RYHOO RECLUSER
 SETTING 100/50 IN 25/10/25
 MAXIMUM TURN OFF RECLUSER

INCLUDES INSULATED CONDUCTORS
 EXCEPT FOR OVERHEAD

OPEN Cable Removed

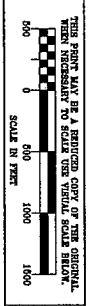
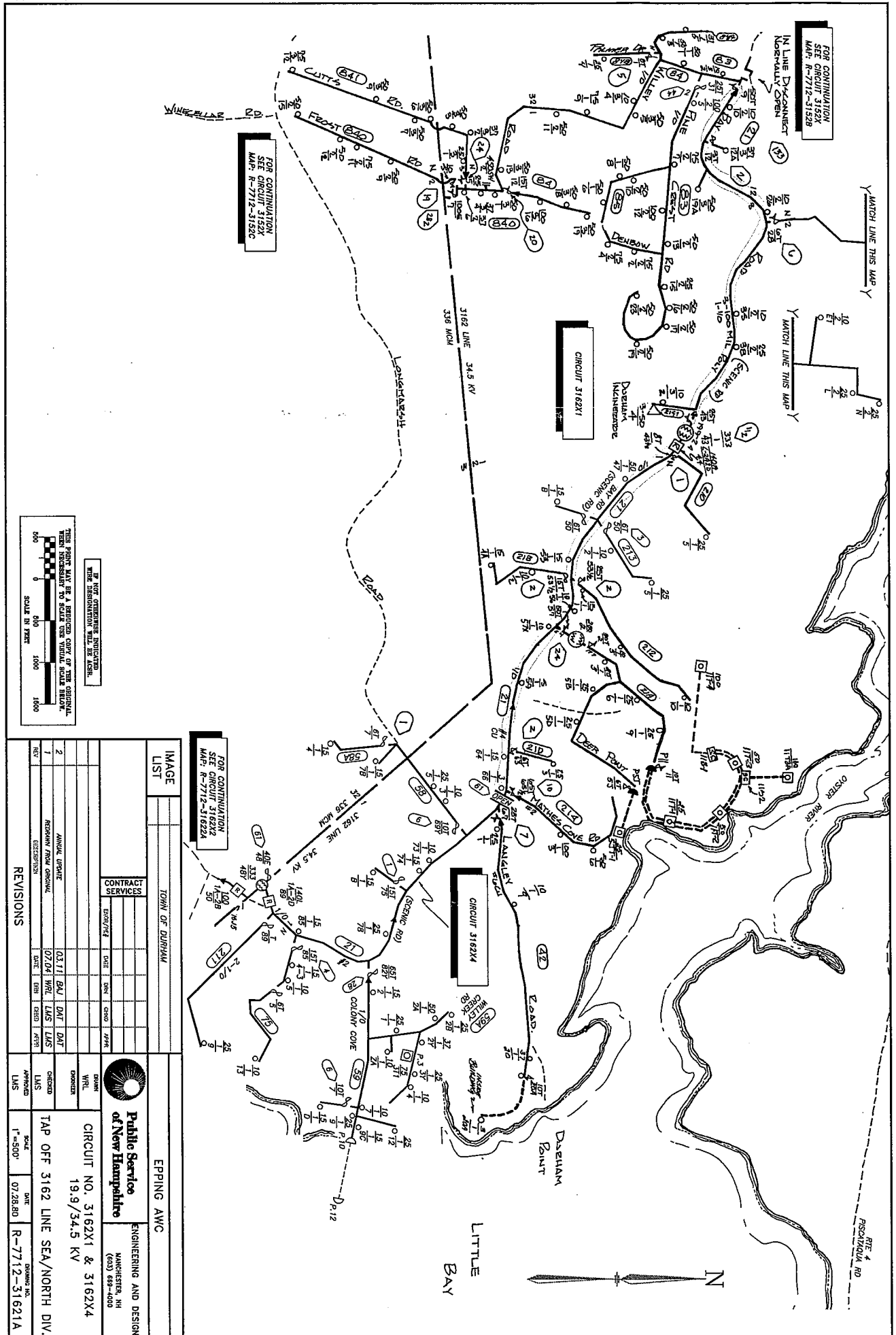


IMAGE LIST		TOWN OF DURHAM		EPPING AWC	
CONTRACT SERVICES		DATE		BY	
ANNUAL UPDATE		02/11	BAJ	DATE	DAT
REVISION FROM ORIGINAL		02/14	WHL	DATE	LMS
REVISIONS		DATE	BY	DATE	BY
APPROVED		DATE		SCALE	
LMS		07/28/80		R-7712-31621A	
Public Service of New Hampshire		ENGINEERING AND DESIGN		MANCHESTER, NH (603) 889-4000	
CIRCUIT NO. 3162X1 & 3162X4		19.9/34.5 KV		TAP OFF 3162 LINE SEA/NORTH DIV.	

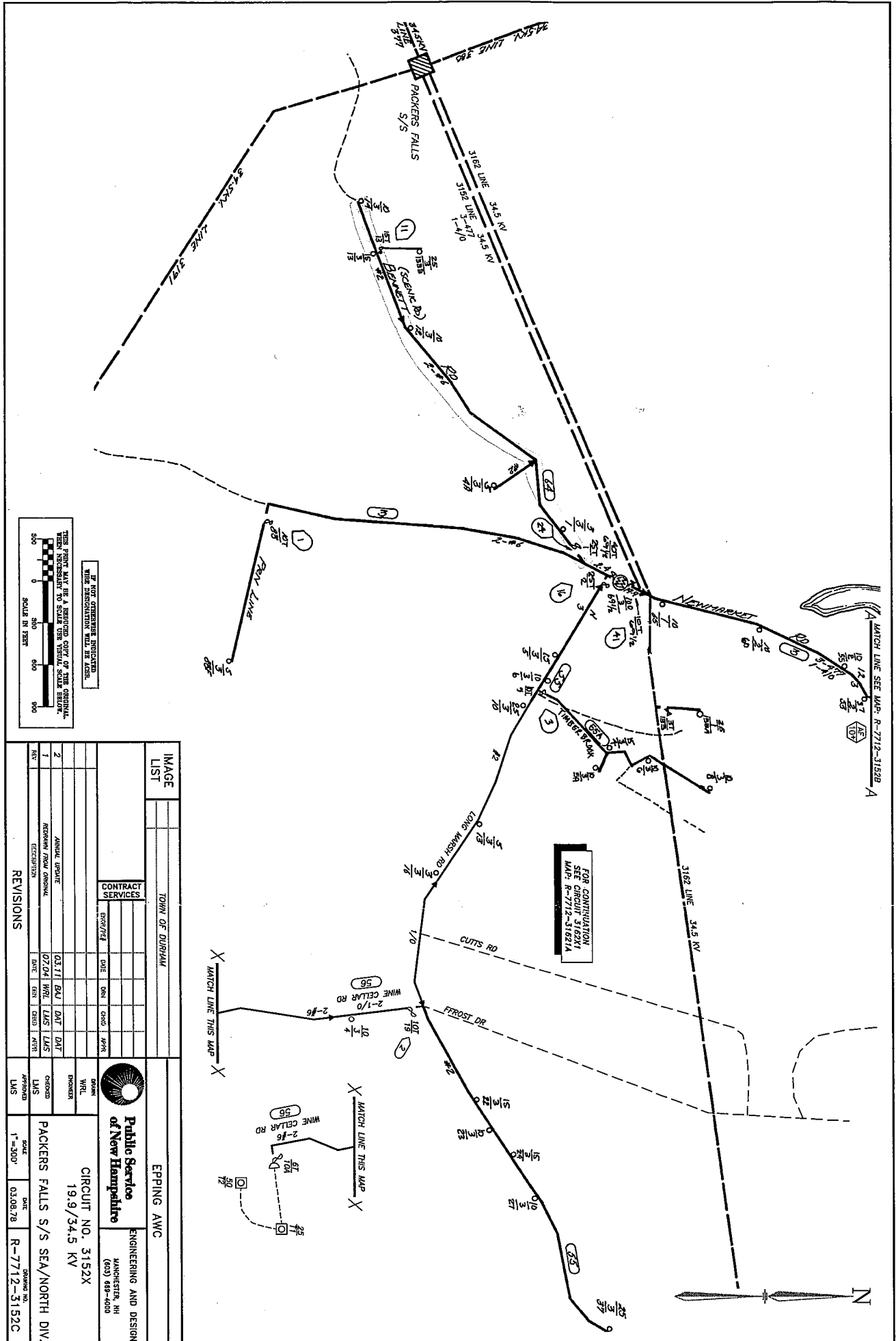


IMAGE LIST		TOWN OF DURHAM		CONTRACT SERVICES		EPPING AWC	
1	REVISION FROM ORIGINAL	DATE	BY	DATE	BY	DATE	BY
2	ANNUAL UPDATE	03/11	BJL	03/11	BJL	03/11	BJL
3	REVISION FROM ORIGINAL	07/04	WZL	07/04	WZL	07/04	WZL
4	REVISION	08/03	WZL	08/03	WZL	08/03	WZL
5	REVISION	08/03	WZL	08/03	WZL	08/03	WZL
6	REVISION	08/03	WZL	08/03	WZL	08/03	WZL
7	REVISION	08/03	WZL	08/03	WZL	08/03	WZL
8	REVISION	08/03	WZL	08/03	WZL	08/03	WZL
9	REVISION	08/03	WZL	08/03	WZL	08/03	WZL
10	REVISION	08/03	WZL	08/03	WZL	08/03	WZL
11	REVISION	08/03	WZL	08/03	WZL	08/03	WZL
12	REVISION	08/03	WZL	08/03	WZL	08/03	WZL
13	REVISION	08/03	WZL	08/03	WZL	08/03	WZL
14	REVISION	08/03	WZL	08/03	WZL	08/03	WZL
15	REVISION	08/03	WZL	08/03	WZL	08/03	WZL
16	REVISION	08/03	WZL	08/03	WZL	08/03	WZL
17	REVISION	08/03	WZL	08/03	WZL	08/03	WZL
18	REVISION	08/03	WZL	08/03	WZL	08/03	WZL
19	REVISION	08/03	WZL	08/03	WZL	08/03	WZL
20	REVISION	08/03	WZL	08/03	WZL	08/03	WZL
21	REVISION	08/03	WZL	08/03	WZL	08/03	WZL
22	REVISION	08/03	WZL	08/03	WZL	08/03	WZL
23	REVISION	08/03	WZL	08/03	WZL	08/03	WZL
24	REVISION	08/03	WZL	08/03	WZL	08/03	WZL
25	REVISION	08/03	WZL	08/03	WZL	08/03	WZL
26	REVISION	08/03	WZL	08/03	WZL	08/03	WZL
27	REVISION	08/03	WZL	08/03	WZL	08/03	WZL
28	REVISION	08/03	WZL	08/03	WZL	08/03	WZL
29	REVISION	08/03	WZL	08/03	WZL	08/03	WZL
30	REVISION	08/03	WZL	08/03	WZL	08/03	WZL
31	REVISION	08/03	WZL	08/03	WZL	08/03	WZL
32	REVISION	08/03	WZL	08/03	WZL	08/03	WZL
33	REVISION	08/03	WZL	08/03	WZL	08/03	WZL
34	REVISION	08/03	WZL	08/03	WZL	08/03	WZL
35	REVISION	08/03	WZL	08/03	WZL	08/03	WZL
36	REVISION	08/03	WZL	08/03	WZL	08/03	WZL
37	REVISION	08/03	WZL	08/03	WZL	08/03	WZL
38	REVISION	08/03	WZL	08/03	WZL	08/03	WZL
39	REVISION	08/03	WZL	08/03	WZL	08/03	WZL
40	REVISION	08/03	WZL	08/03	WZL	08/03	WZL
41	REVISION	08/03	WZL	08/03	WZL	08/03	WZL
42	REVISION	08/03	WZL	08/03	WZL	08/03	WZL
43	REVISION	08/03	WZL	08/03	WZL	08/03	WZL
44	REVISION	08/03	WZL	08/03	WZL	08/03	WZL
45	REVISION	08/03	WZL	08/03	WZL	08/03	WZL
46	REVISION	08/03	WZL	08/03	WZL	08/03	WZL
47	REVISION	08/03	WZL	08/03	WZL	08/03	WZL
48	REVISION	08/03	WZL	08/03	WZL	08/03	WZL
49	REVISION	08/03	WZL	08/03	WZL	08/03	WZL
50	REVISION	08/03	WZL	08/03	WZL	08/03	WZL
51	REVISION	08/03	WZL	08/03	WZL	08/03	WZL
52	REVISION	08/03	WZL	08/03	WZL	08/03	WZL
53	REVISION	08/03	WZL	08/03	WZL	08/03	WZL
54	REVISION	08/03	WZL	08/03	WZL	08/03	WZL
55	REVISION	08/03	WZL	08/03	WZL	08/03	WZL
56	REVISION	08/03	WZL	08/03	WZL	08/03	WZL

Public Service of New Hampshire
Engineering and Design
 MANCHESTER, NH (603) 889-4000
 EPPING AWC
 CIRCUIT NO. 3152X
 19.9/34.5 KV
 PACKERS FALLS S/S SEA/NORTH DIV.
 SCALE: 1"=500'
 DATE: 03.08.78
 DRAWING NO: R-7712-3152C