



PREVIOUSLY APPROVED ON 11 JULY 2013

AREAS TO BE REVISED PER STIPULATIONS



6/6 WINDOWS REPLACE PREVIOUS 2/2 WINDOWS

NEW FRONT ENTRIES WITH ADDED DETAIL

UPDATED



ORION STUDENT HOUSING AT UNH
MAIN STREET, DURHAM NEW HAMPSHIRE

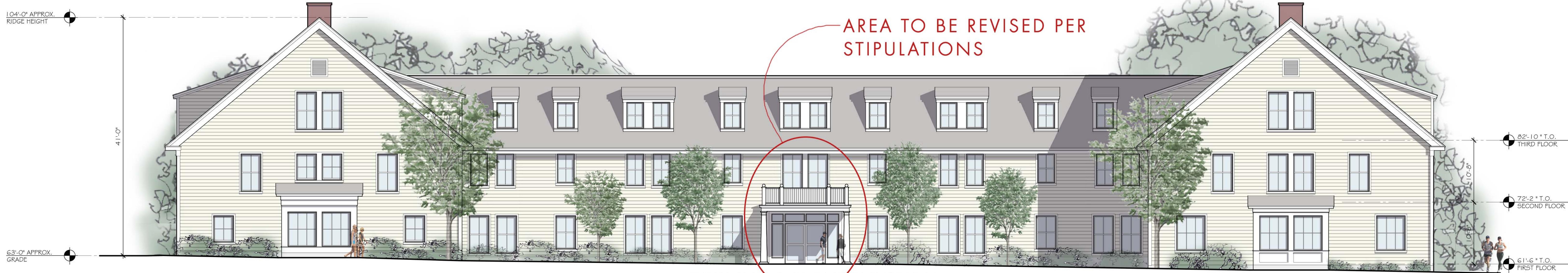
MAIN STREET ELEVATION

12 AUGUST 2013

PROJECT NO. 201315



©2013



BUILDING B FRONT ELEVATION



BUILDING B BACK ELEVATION



BUILDING A SIDE ELEVATION

ORION STUDENT HOUSING AT UNH
 MAIN STREET, DURHAM NEW HAMPSHIRE

ELEVATIONS - PREVIOUSLY APPROVED ON 11 JULY 2013

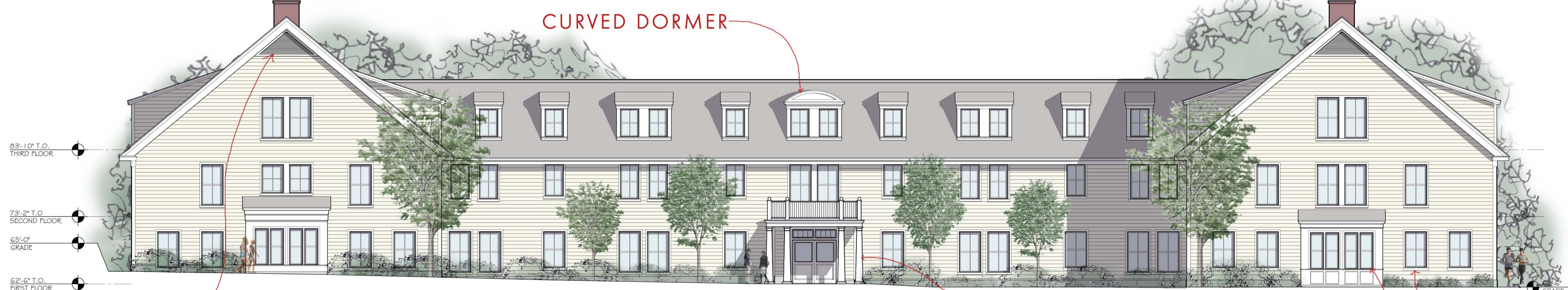
1/8" = 1'-0"

12 AUGUST 2013

PROJECT NO. 201315

DeStefano ARCHITECTS

©2013



BUILDING B FRONT ELEVATION

ADDITION OF TWO COLUMNS AND NEW DOOR PATTERN AT ENTRY

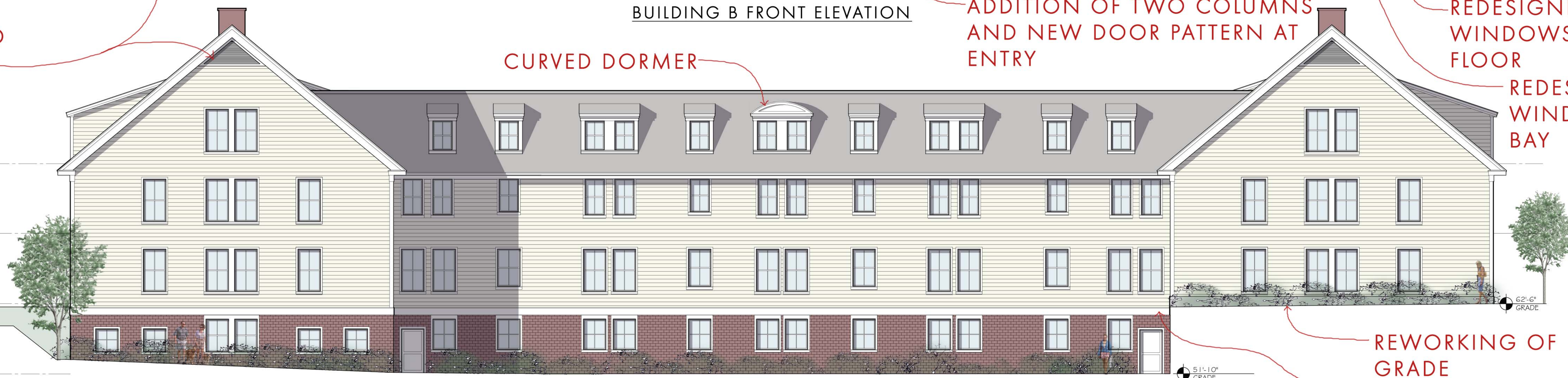
REDESIGNED WINDOWS ON FIRST FLOOR

GABLE END VENTS

CURVED DORMER

REDESIGNED WINDOWS AT BAY

63'-10" T.O. THIRD FLOOR
73'-2" T.O. SECOND FLOOR
62'-6" T.O. FIRST FLOOR
54'-0" GRADE
51'-10" T.O. BASEMENT



BUILDING B BACK ELEVATION

REWORKING OF GRADE MUDSILL, TYP.

ADDITION OF SHUTTERS TO MATCH FRONT FACADE

90'-10" T.O. THIRD FLOOR
80'-2" T.O. SECOND FLOOR
69'-6" T.O. FIRST FLOOR
66'-0" GRADE



BUILDING A SIDE ELEVATION

SIMPLIFIED DOOR SYSTEM

ELEVATIONS - UPDATED