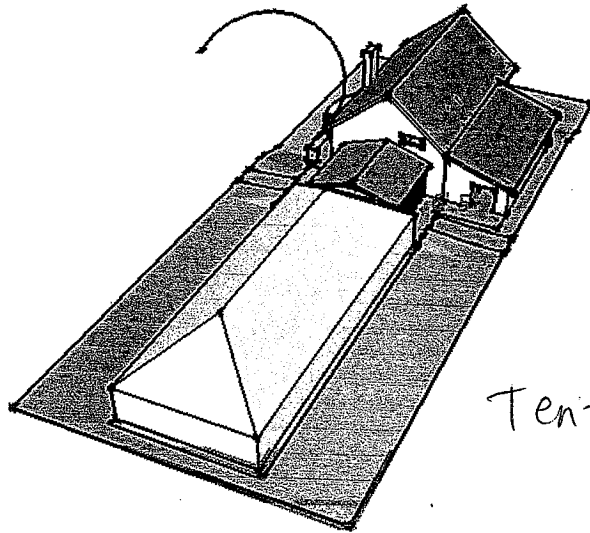


Sky View from North of Cedar House and Tent.  
Pending Design Finalization.

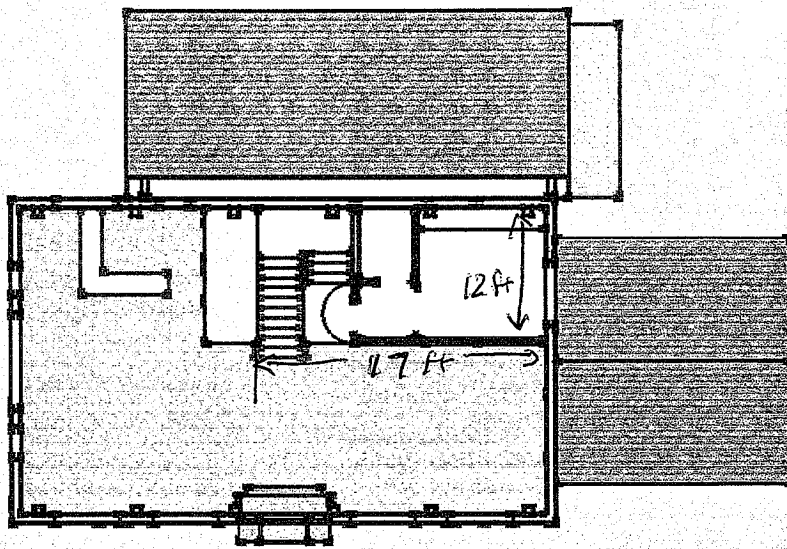
RECEIVED  
Town of Durham  
FEB 21 2014  
Planning, Assessing  
and Zoning



Tent maximum = 40ft x 80ft =  
3200 ft<sup>2</sup>

Cider House - Upper Floor

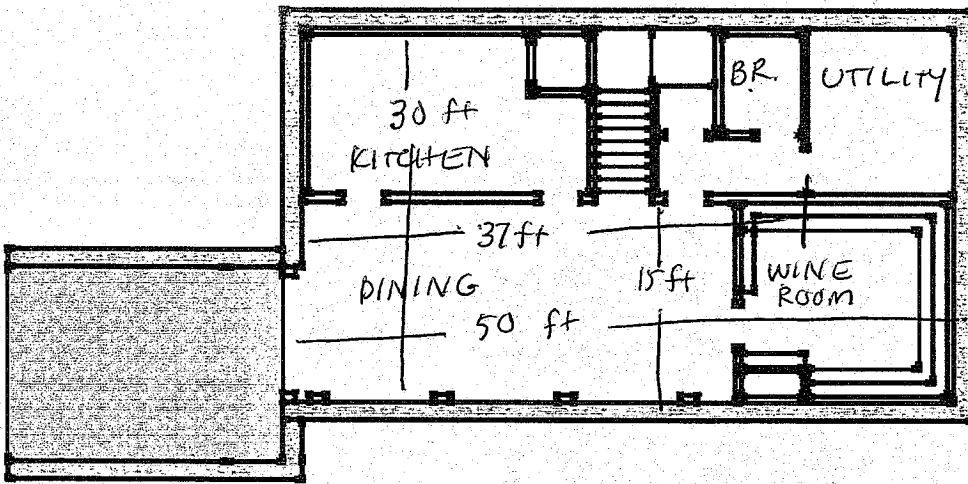
Pending Design Finalization



Upper floor =  
approximately 204 ft<sup>2</sup>

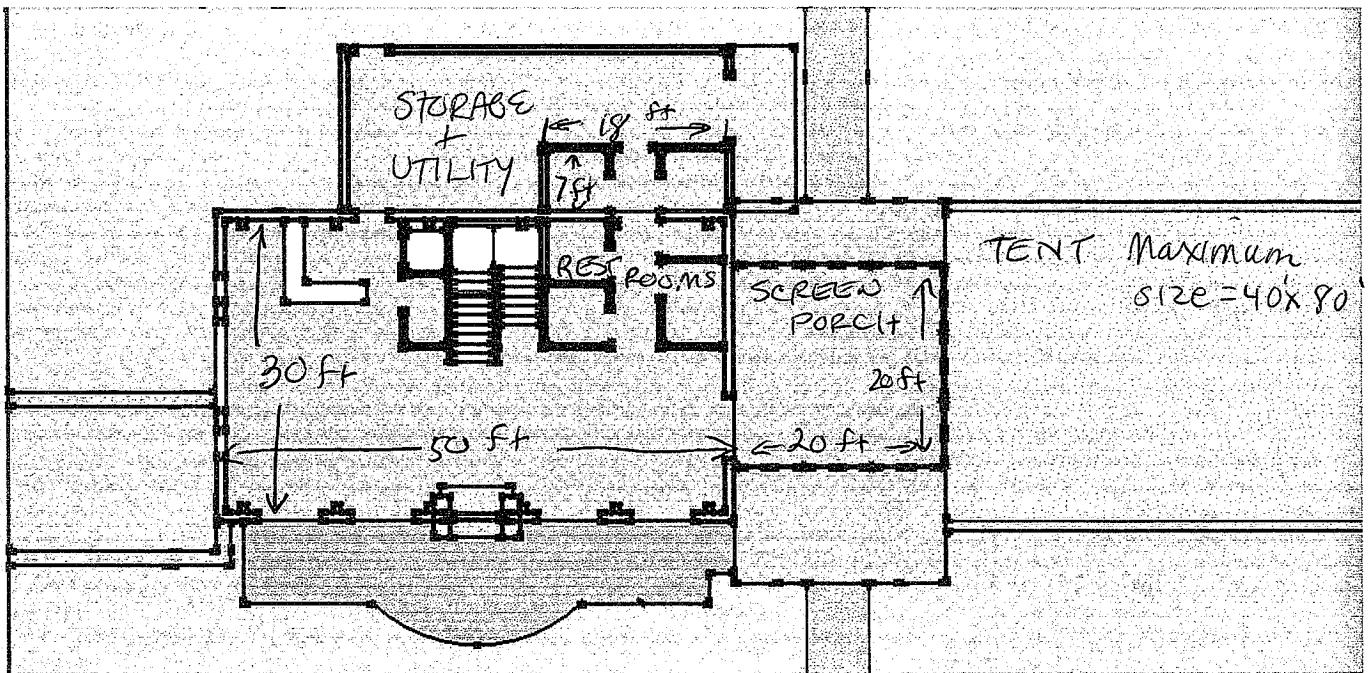
Cider House - Lower Level

Pending Design Finalization



Approximately 1200ft<sup>2</sup>

Cider House - Main Floor  
Pending Design Finalization



Main Floor!  
Cider House = approximately =  $1500 \text{ ft}^2$   
Function Area

Screen Porch = approximately =  $400 \text{ ft}^2$

Tent (maximum dimension)  $3200 \text{ ft}^2$



Split Rail Fencing - 4 ft

Around parking (proposed) and along  
property West + North boundary adjacent to  
parking area.

RECEIVED  
Town of Durham

FEB 21 2014

Planning, Assessing  
and Zoning