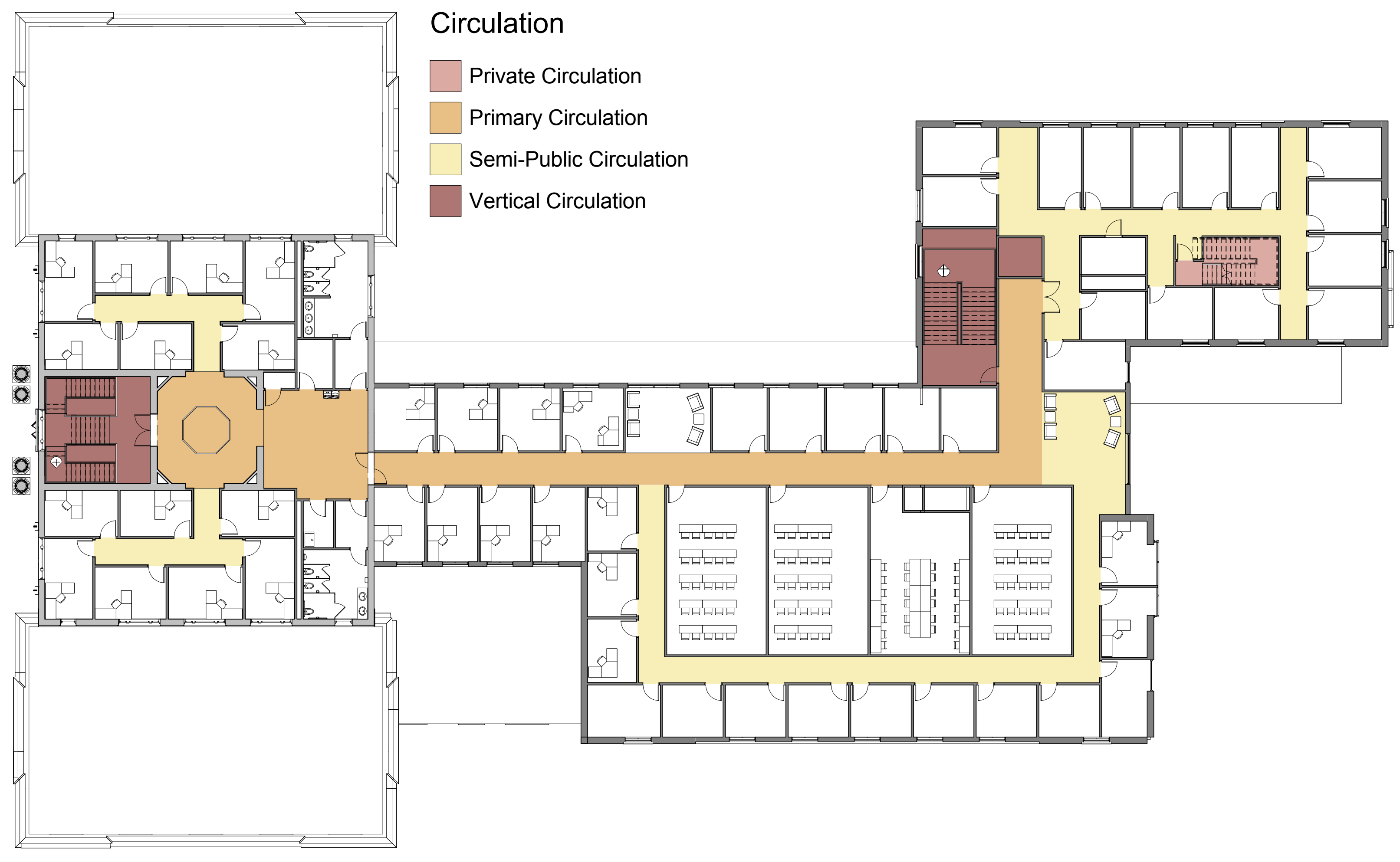
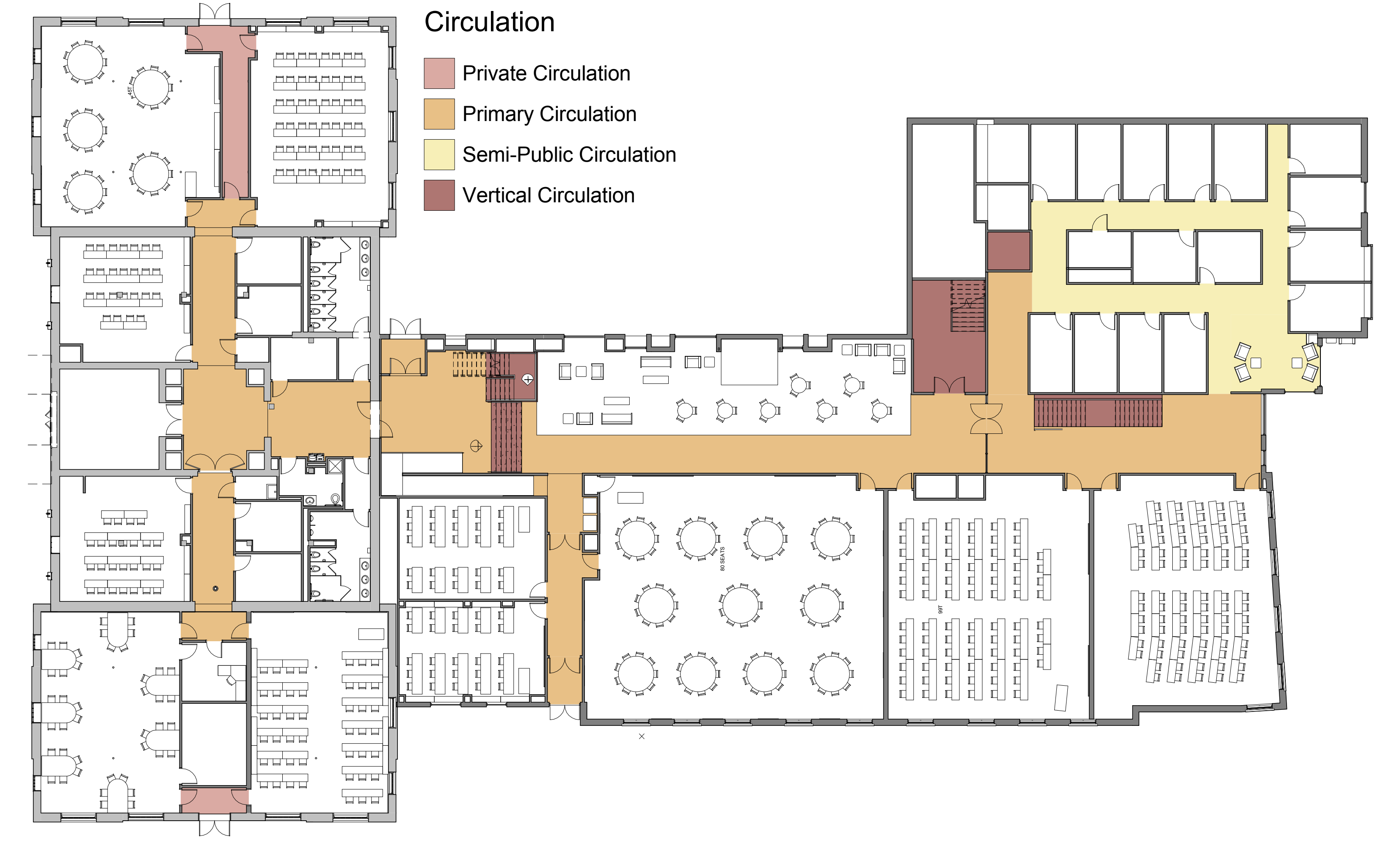




Aerial View



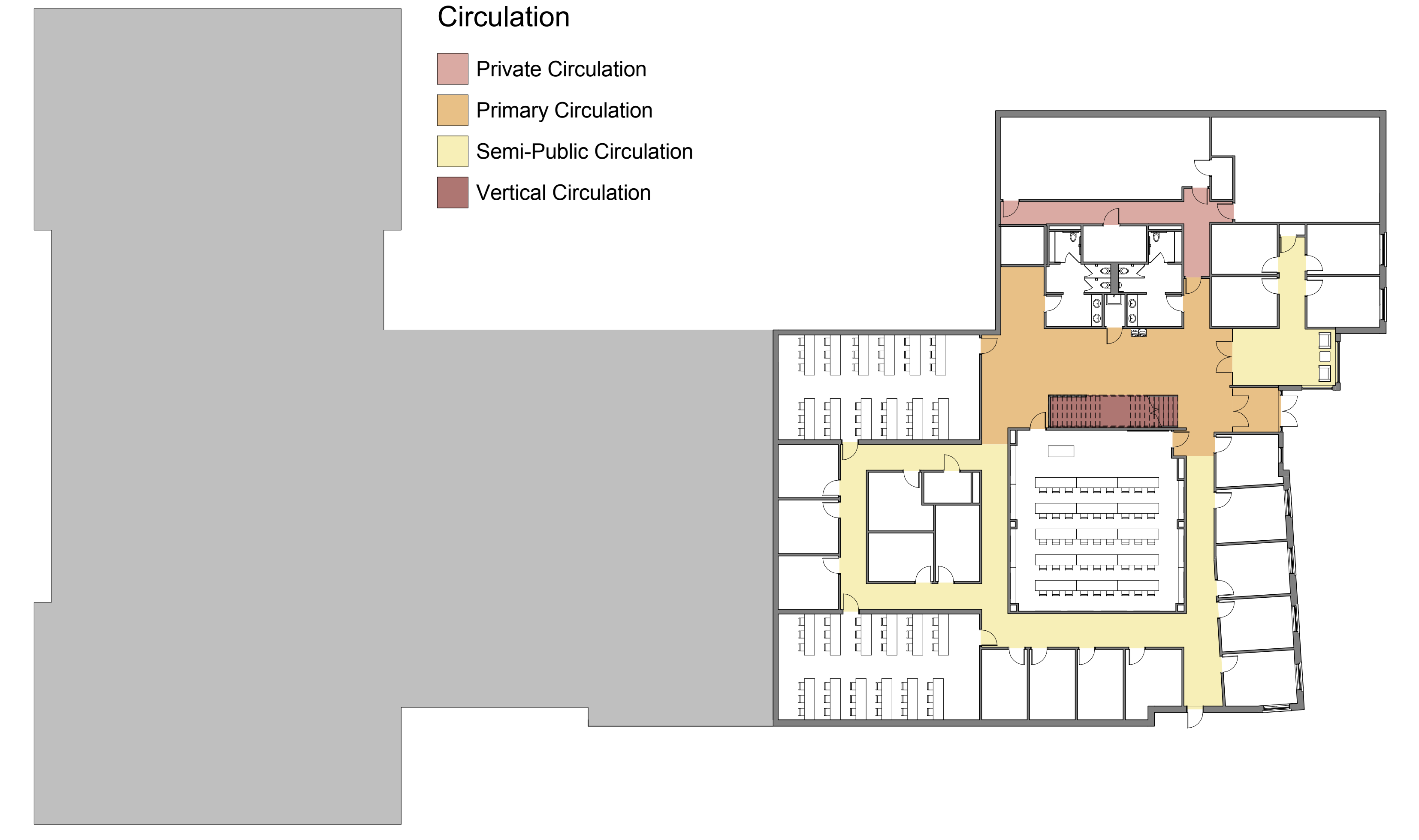
Level 3



Level 1

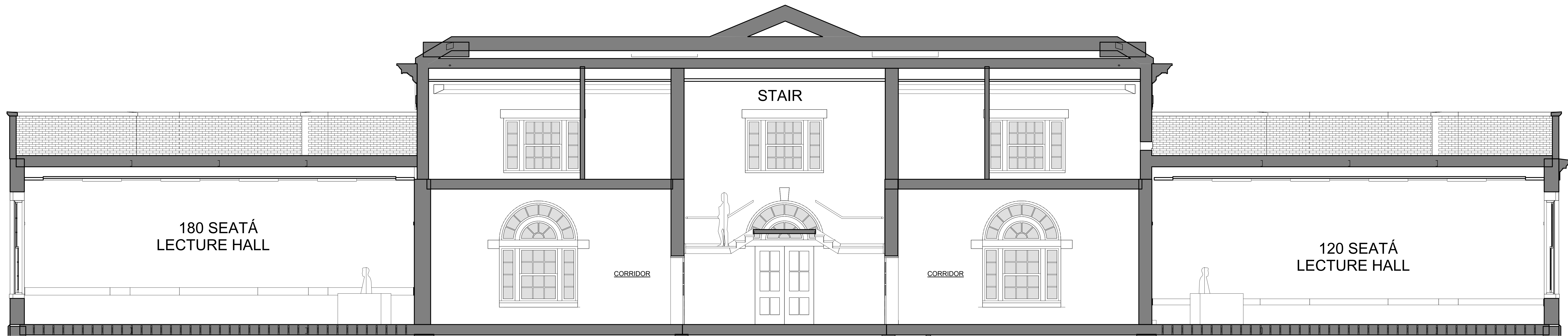


Level 2

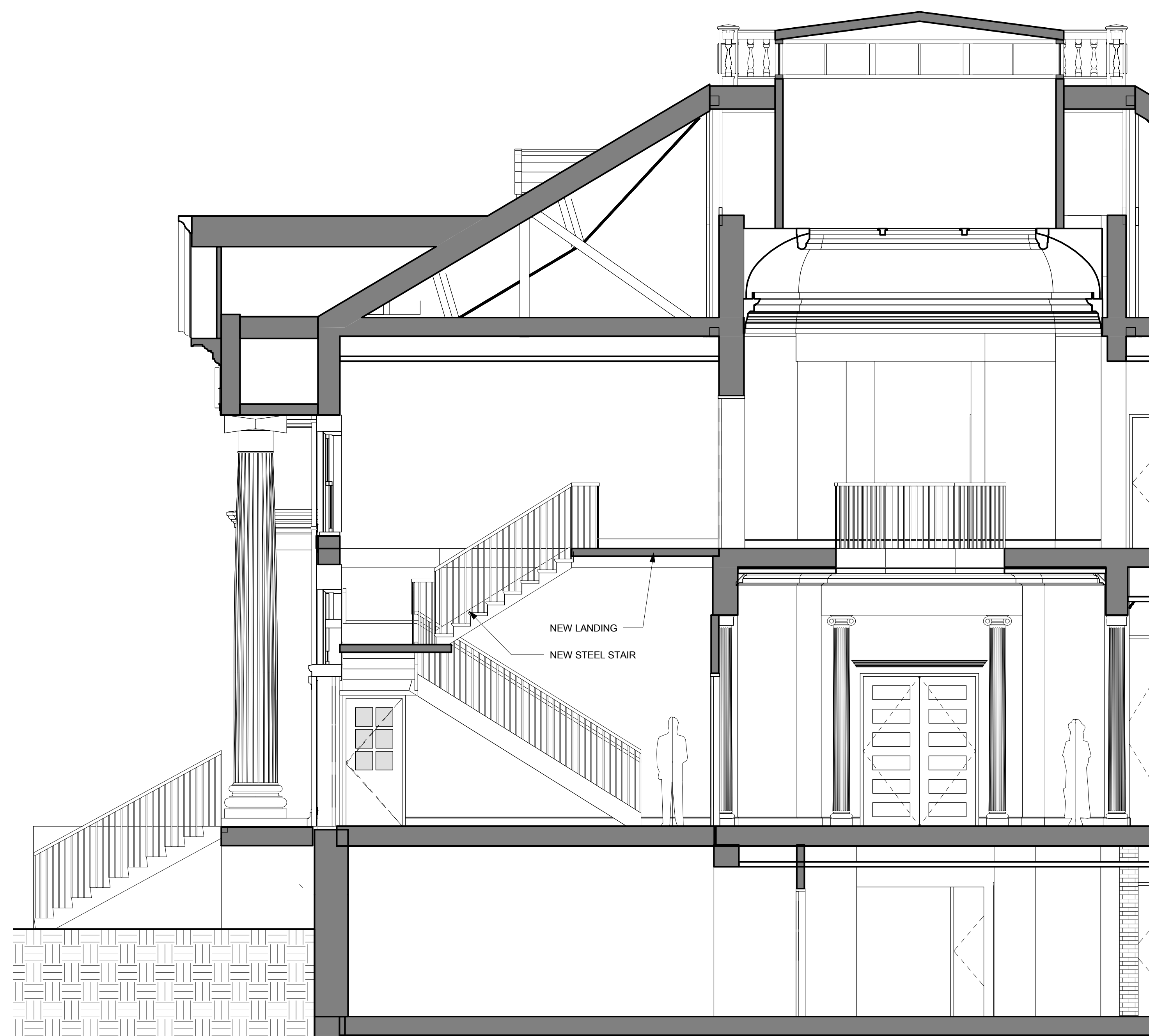


Level G

Hamilton Smith Hall Floor Plans



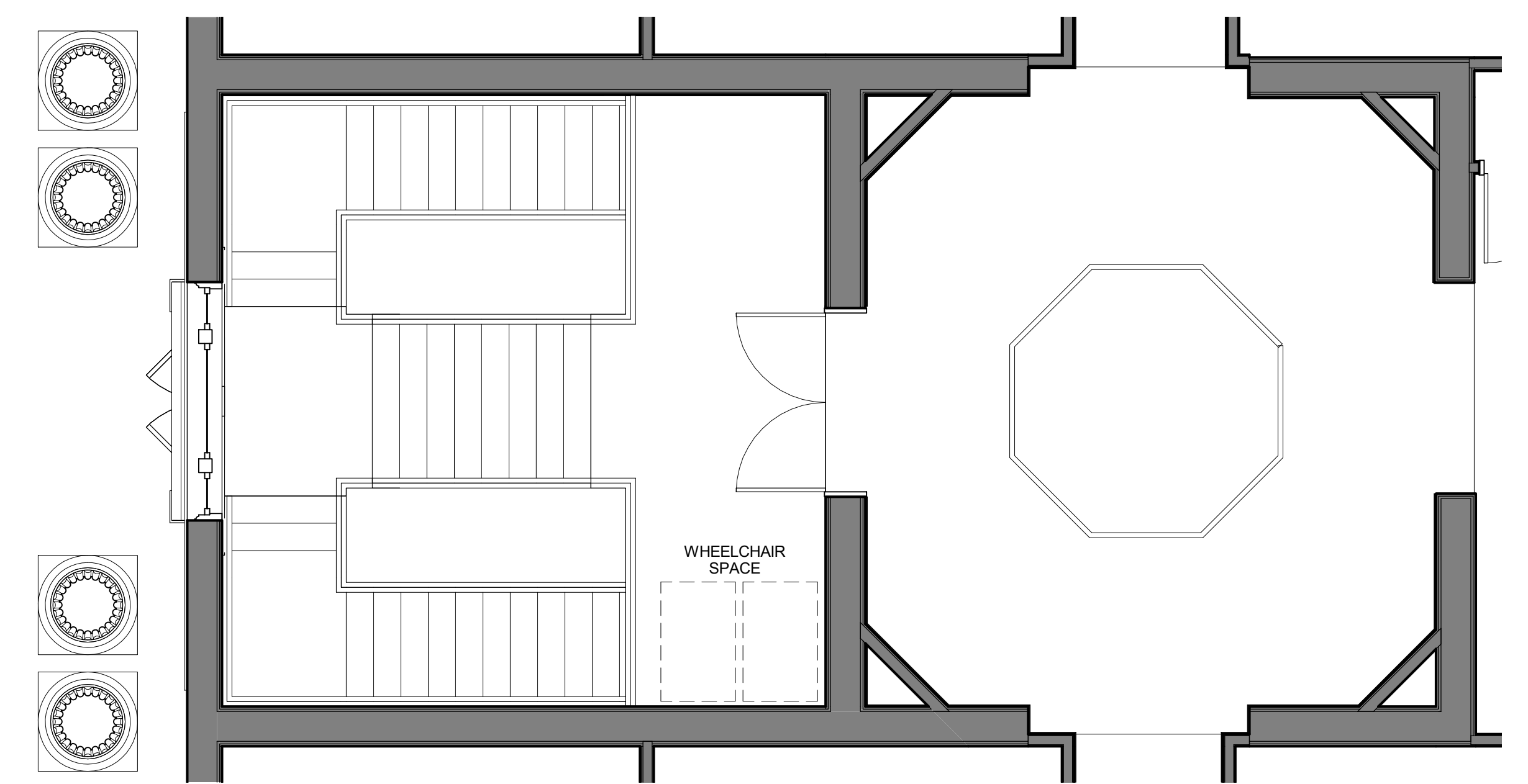
SECTION LOOKING NORTH



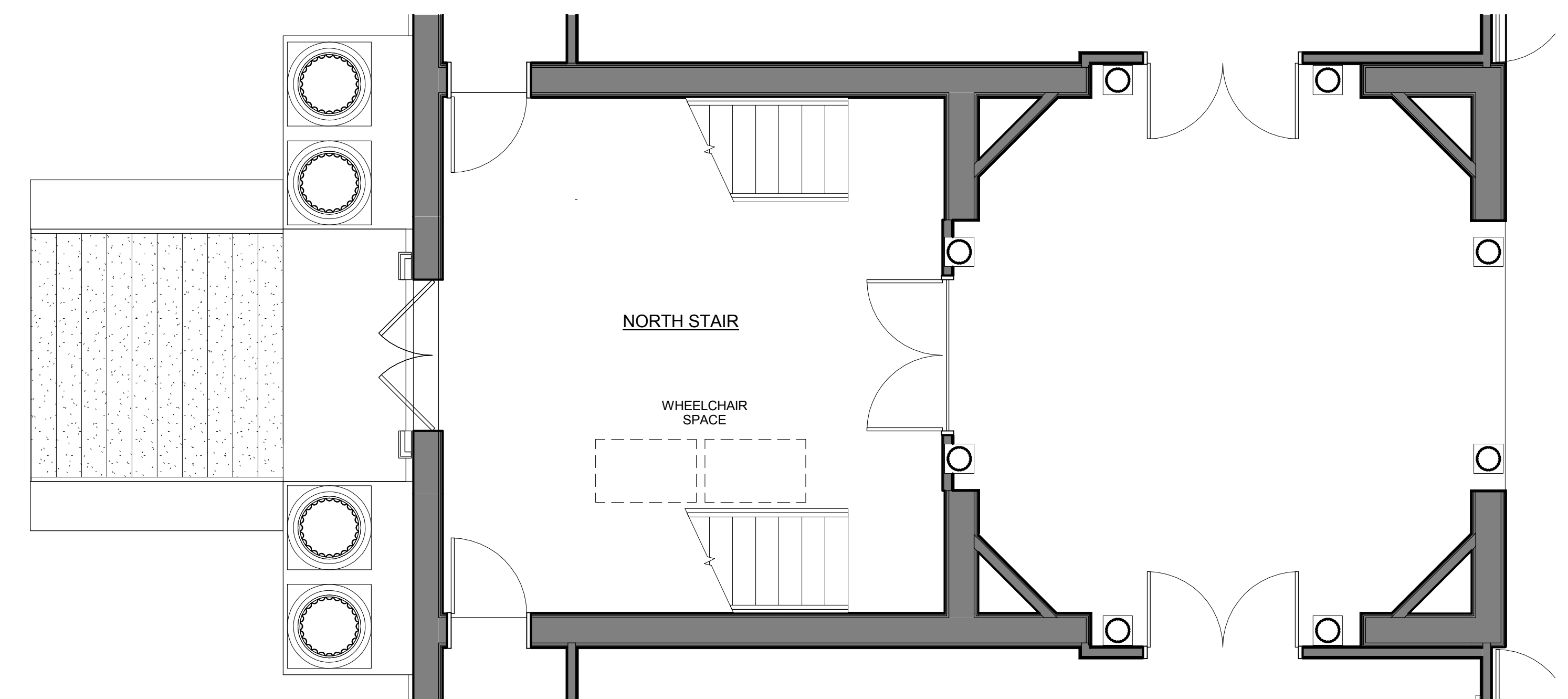
SECTION LOOKING EAST



SECTION LOOKING SOUTH



NORTH STAIR - Level 3 Plan



NORTH STAIR - LEVEL 2

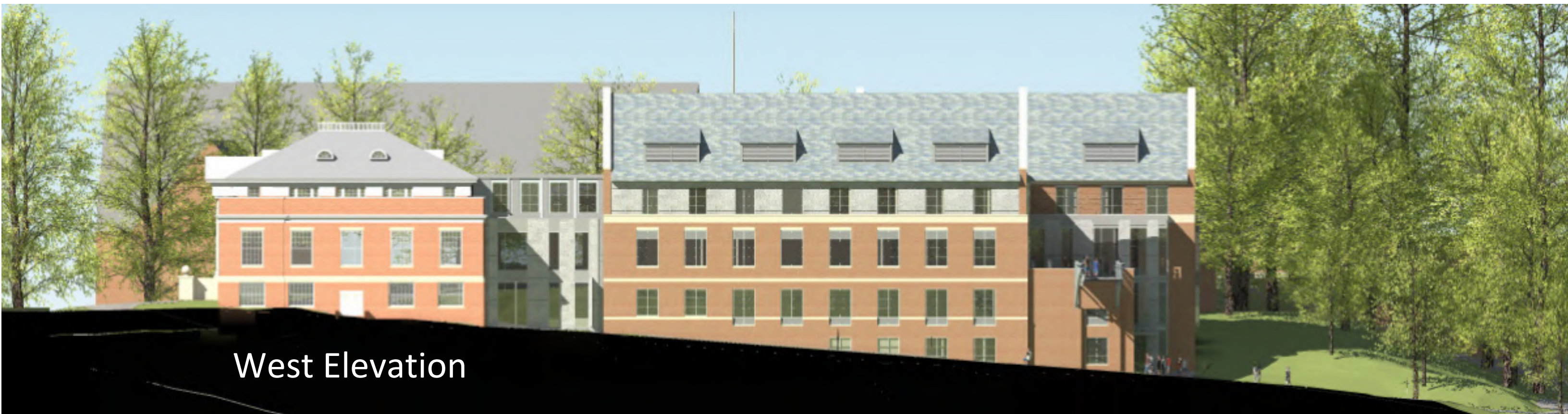
Hamilton Smith Hall

North Stair

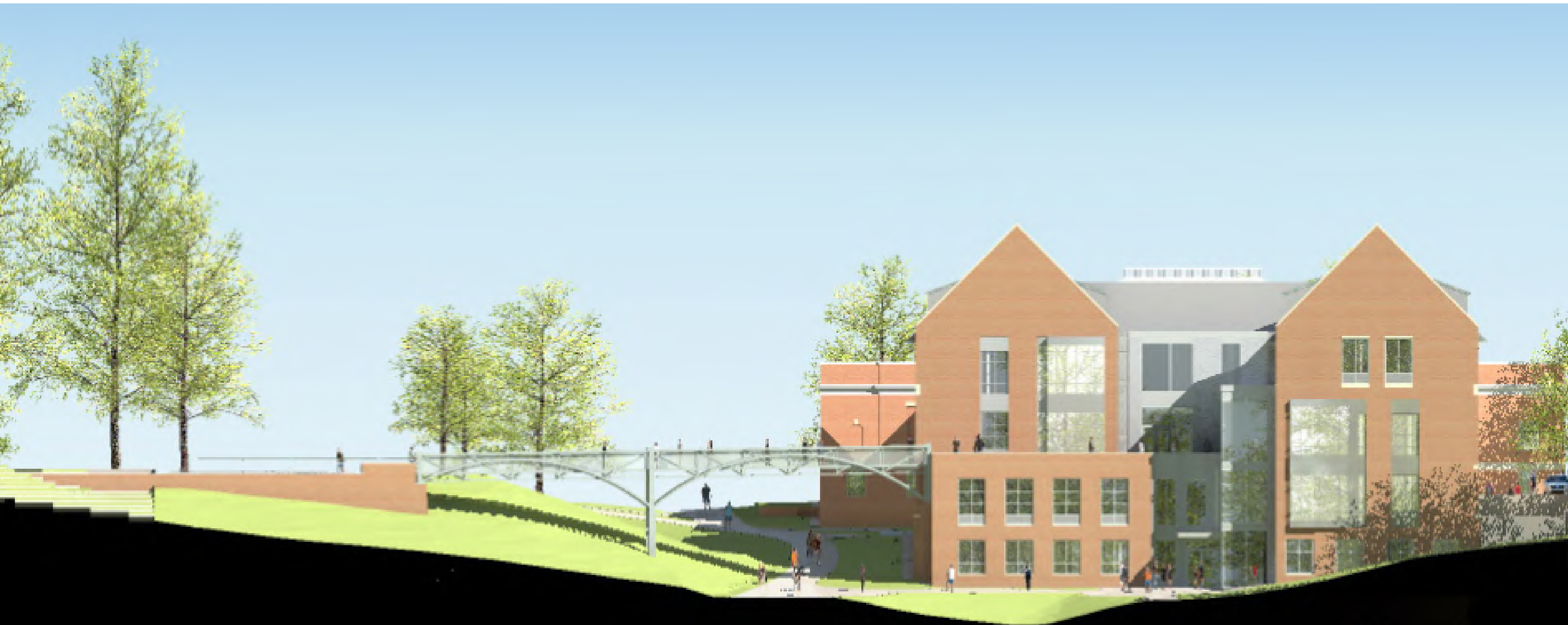




East Elevation



West Elevation



South Elevation



View from Library













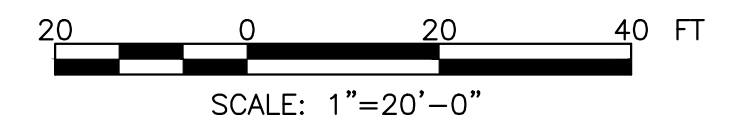
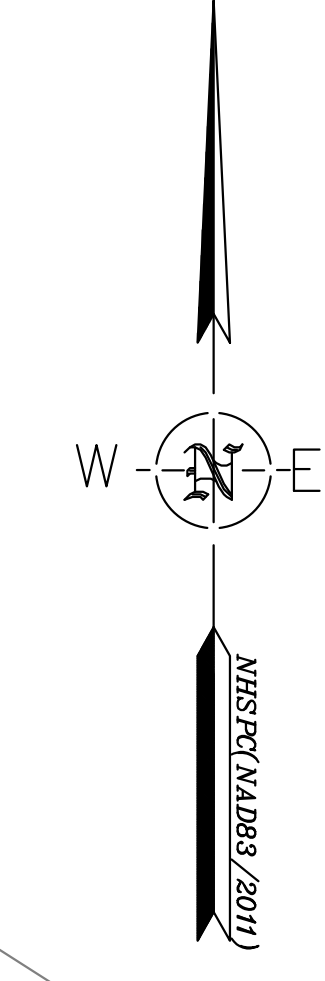
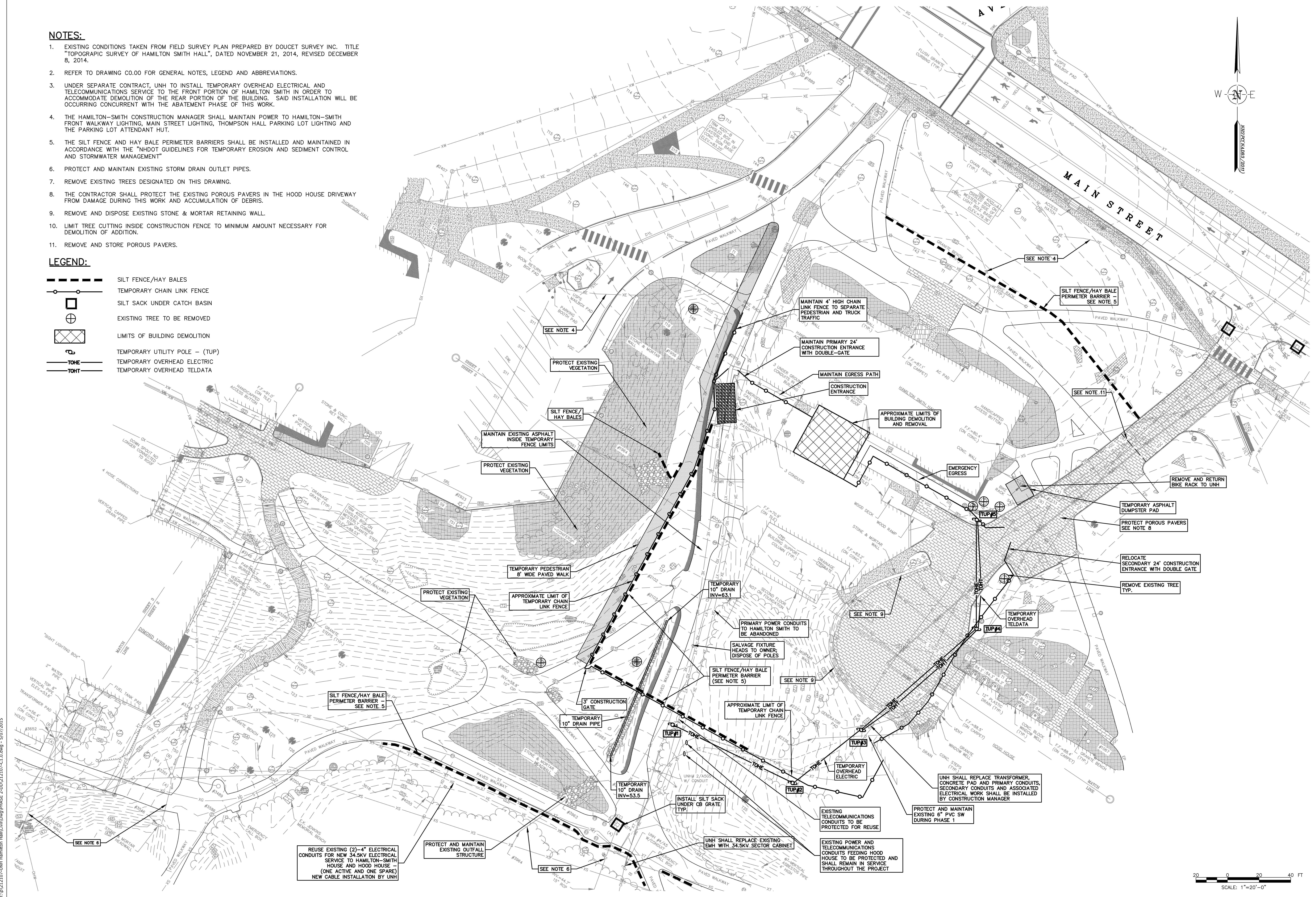


NOTES:

- EXISTING CONDITIONS TAKEN FROM FIELD SURVEY PLAN PREPARED BY DOUCET SURVEY INC. TITLE "TOPOGRAPHIC SURVEY OF HAMILTON SMITH HALL", DATED NOVEMBER 21, 2014, REVISED DECEMBER 8, 2014.
- REFER TO DRAWING C0.00 FOR GENERAL NOTES, LEGEND AND ABBREVIATIONS.
- UNDER SEPARATE CONTRACT, UNH TO INSTALL TEMPORARY OVERHEAD ELECTRICAL AND TELECOMMUNICATIONS SERVICE TO THE FRONT PORTION OF HAMILTON SMITH IN ORDER TO ACCOMMODATE DEMOLITION OF THE REAR PORTION OF THE BUILDING. SAID INSTALLATION WILL BE OCCURRING CONCURRENT WITH THE ABATEMENT PHASE OF THIS WORK.
- THE HAMILTON-SMITH CONSTRUCTION MANAGER SHALL MAINTAIN POWER TO HAMILTON-SMITH FRONT WALKWAY LIGHTING, MAIN STREET LIGHTING, THOMPSON HALL PARKING LOT LIGHTING AND THE PARKING LOT ATTENDANT HUT.
- THE SILT FENCE AND HAY BALE PERIMETER BARRIERS SHALL BE INSTALLED AND MAINTAINED IN ACCORDANCE WITH THE "NHDOT GUIDELINES FOR TEMPORARY EROSION AND SEDIMENT CONTROL AND STORMWATER MANAGEMENT"
- PROTECT AND MAINTAIN EXISTING STORM DRAIN OUTLET PIPES.
- REMOVE EXISTING TREES DESIGNATED ON THIS DRAWING.
- THE CONTRACTOR SHALL PROTECT THE EXISTING POROUS PAVERS IN THE HOOD HOUSE DRIVEWAY FROM DAMAGE DURING THIS WORK AND ACCUMULATION OF DEBRIS.
- REMOVE AND DISPOSE EXISTING STONE & MORTAR RETAINING WALL.
- LIMIT TREE CUTTING INSIDE CONSTRUCTION FENCE TO MINIMUM AMOUNT NECESSARY FOR DEMOLITION OF ADDITION.
- REMOVE AND STORE POROUS PAVERS.

LEGEND:

- SILT FENCE/HAY BALES
- TEMPORARY CHAIN LINK FENCE
- SILT SACK UNDER CATCH BASIN
- EXISTING TREE TO BE REMOVED
- LIMITS OF BUILDING DEMOLITION
- TEMPORARY UTILITY POLE - (TUP)
- TEMPORARY OVERHEAD ELECTRIC
- TEMPORARY OVERHEAD TELDATA



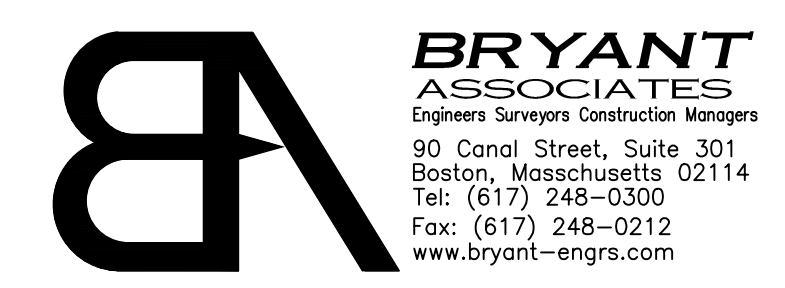
Client

Structural Engineer
 L.A. Fuess Partners 617-948-5626 tel

Civil Engineer
 Bryant Associates 617-248-0300 tel

M/E/P/F Engineers
 Fitzmeyer and Tucci Associates, Inc 781-481-0210 tel

Construction Manager
 Skanska, Inc. 617-574-1400 tel



DESIGN DEVELOPMENT SET

Design Development	5.11.15
Issue Description	Date
Scale: 1" = 20'-0"	
Drawn By: SKL	Checked By: SKL/JJC
Reviewed By: JJC	
Project No.	

SITE DEMOLITION AND EROSION CONTROL PLAN


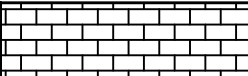


C1.0

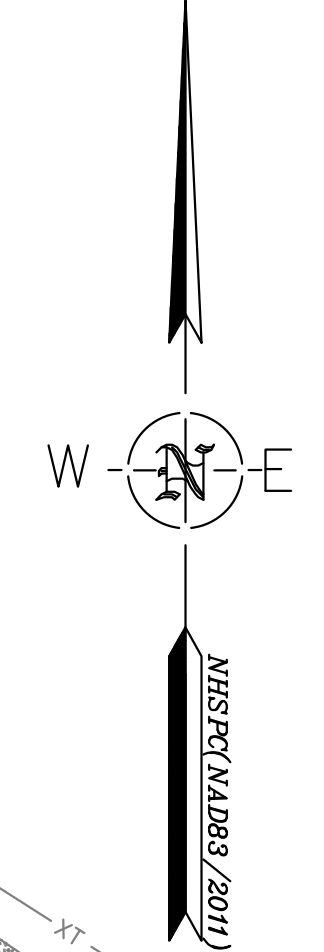
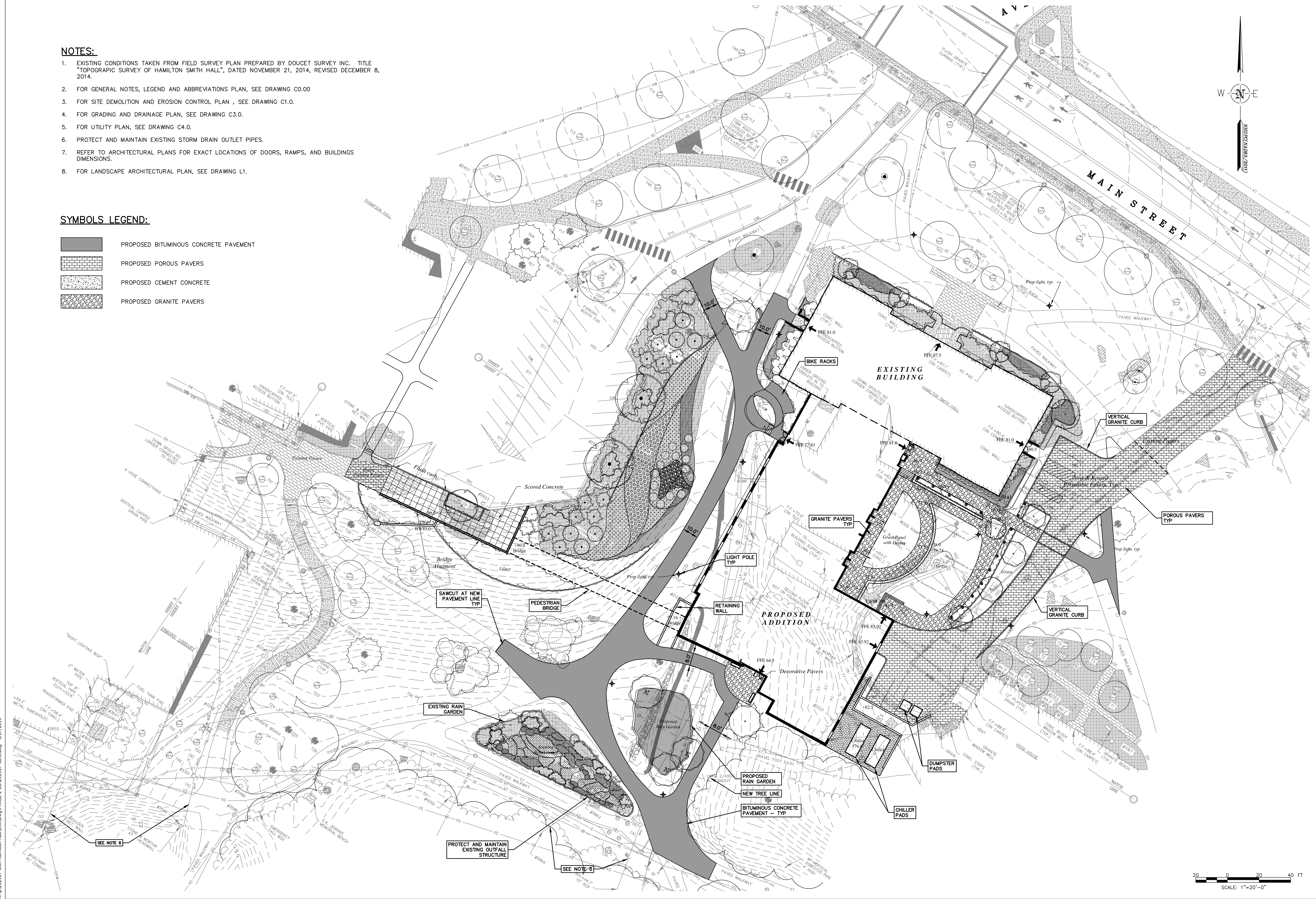
H:\0212107\UNH Hamilton Hall\CivilDwg\PHASE 2-001212107-CL0.dwg - 5/07/2015

NOTES:

- EXISTING CONDITIONS TAKEN FROM FIELD SURVEY PLAN PREPARED BY DOUCET SURVEY INC. TITLE "TOPOGRAPHIC SURVEY OF HAMILTON SMITH HALL", DATED NOVEMBER 21, 2014, REVISED DECEMBER 8, 2014.
- FOR GENERAL NOTES, LEGEND AND ABBREVIATIONS PLAN, SEE DRAWING C0.00
- FOR SITE DEMOLITION AND EROSION CONTROL PLAN, SEE DRAWING C1.0.
- FOR GRADING AND DRAINAGE PLAN, SEE DRAWING C3.0.
- FOR UTILITY PLAN, SEE DRAWING C4.0.
- PROTECT AND MAINTAIN EXISTING STORM DRAIN OUTLET PIPES.
- REFER TO ARCHITECTURAL PLANS FOR EXACT LOCATIONS OF DOORS, RAMPS, AND BUILDINGS DIMENSIONS.
- FOR LANDSCAPE ARCHITECTURAL PLAN, SEE DRAWING L1.

SYMBOLS LEGEND:

-  PROPOSED BITUMINOUS CONCRETE PAVEMENT
-  PROPOSED POROUS PAVERS
-  PROPOSED CEMENT CONCRETE
-  PROPOSED GRANITE PAVERS



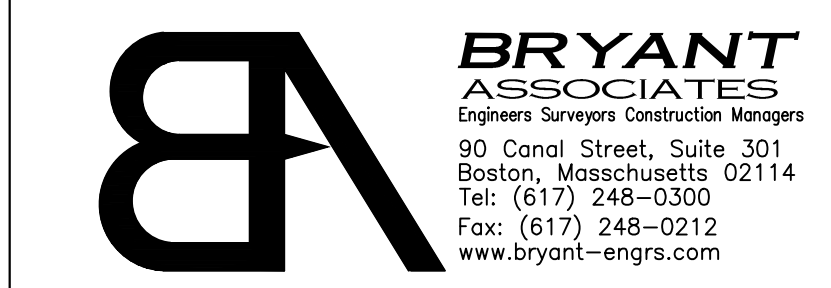
Client

Structural Engineer
L.A. Fuess Partners 617-948-5626 tel

Civil Engineer
Bryant Associates 617-248-0300 tel

M/E/P/F/P Engineers
Fitze Meyer and Tocco Associates, Inc 781-481-0210 tel

Construction Manager
Skanska, Inc. 617-574-1400 tel



DESIGN DEVELOPMENT SET

Design Development	5.11.15
Issue Description	Date
Scale: 1" = 20'-0"	
Drawn By: SKL	Checked By: SKL/JJC
Reviewed By: JJC	
Project No.	

SITE LAYOUT PLAN

H:\WP\212107\UNIT Hamilton Hall\Civil\Phase 2-00\212107-C2.0.dwg - 5/07/2015

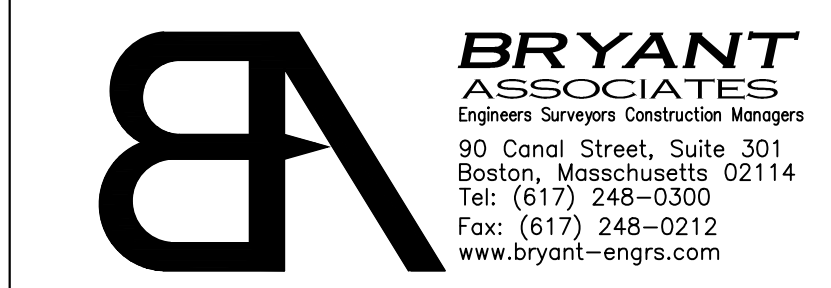
Client

Structural Engineer
L.A. Fuess Partners 617-948-5626 tel

Civil Engineer
Bryant Associates 617-248-0300 tel

M/E/P/F Engineers
Fitzevner and Tocci Associates, Inc 781-481-0210 tel

Construction Manager
Skanska, Inc. 617-574-1400 tel



DESIGN DEVELOPMENT SET

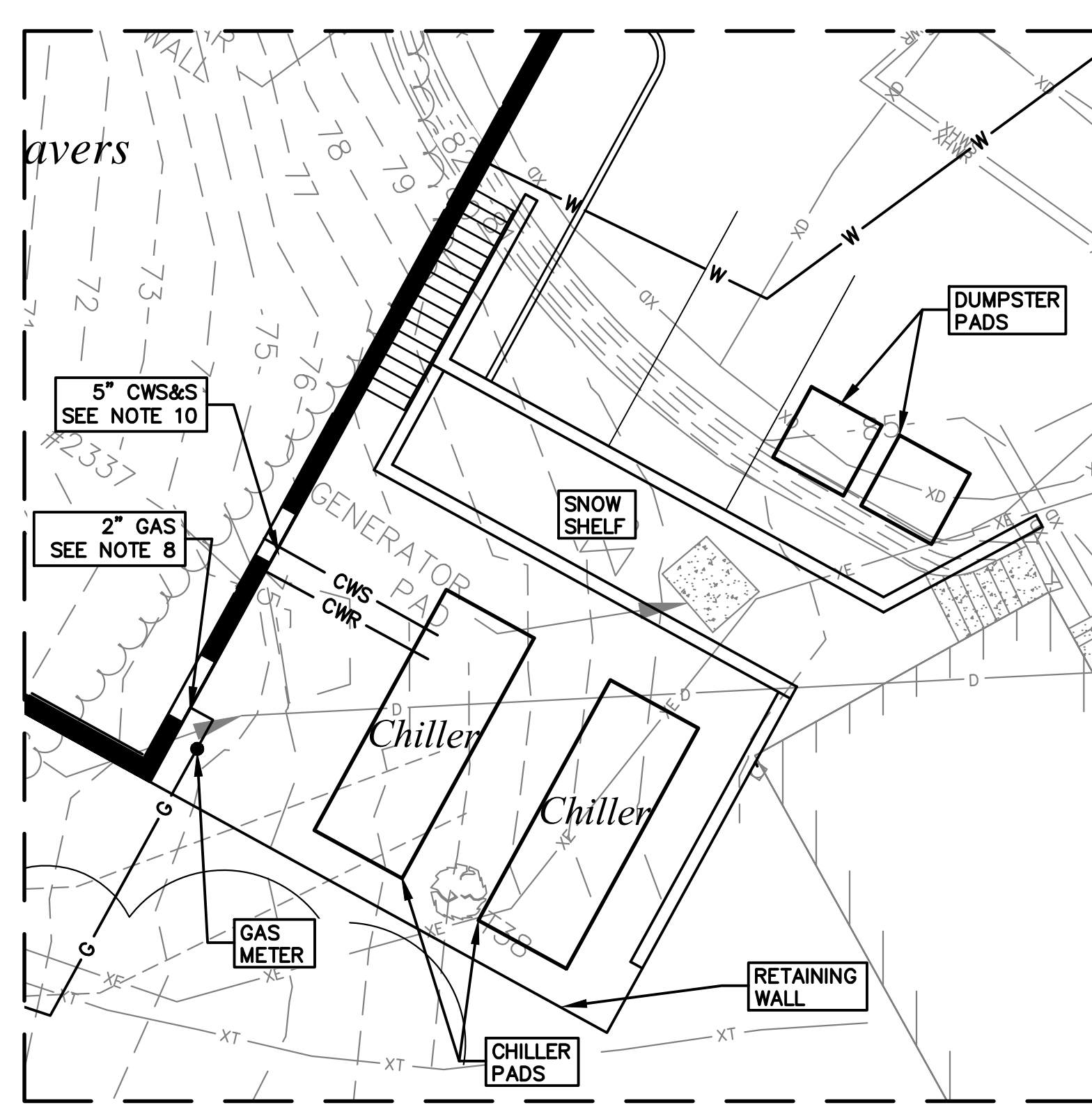
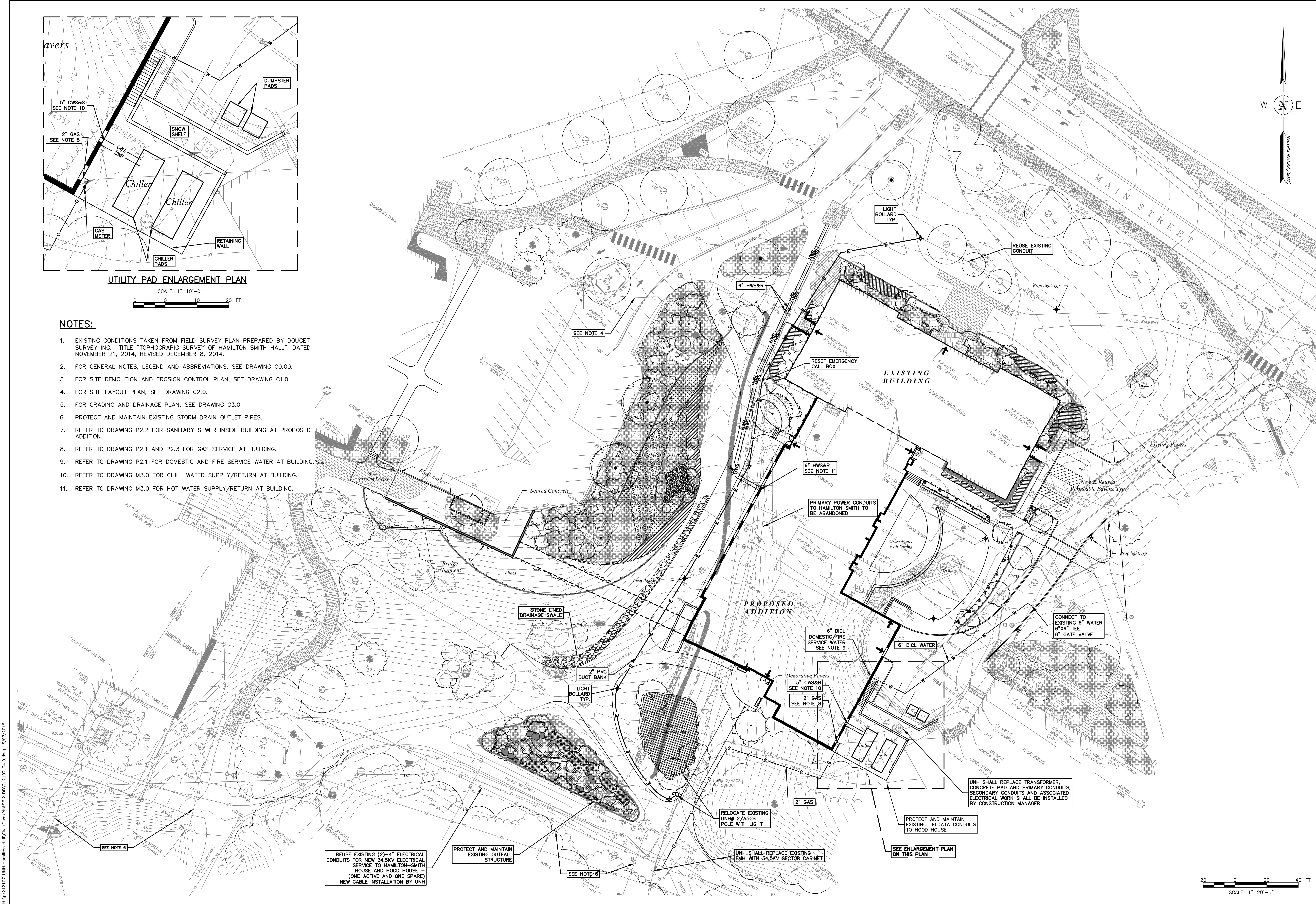
Design Development 5.11.15
Issue Description Date

Scale: 1" = 20'-0"
Drawn By: SKL Checked By: SKL/JJC Reviewed By: JJC

Project No.

UTILITY PLAN

C4.0



UTILITY PAD ENLARGEMENT PLAN

SCALE: 1"=10'-0"
10 0 10 20 FT

NOTES:

- EXISTING CONDITIONS TAKEN FROM FIELD SURVEY PLAN PREPARED BY DOUCET SURVEY INC. TITLE "TOPOGRAPHIC SURVEY OF HAMILTON SMITH HALL", DATED NOVEMBER 21, 2014, REVISED DECEMBER 8, 2014.
- FOR GENERAL NOTES, LEGEND AND ABBREVIATIONS, SEE DRAWING C0.00.
- FOR SITE DEMOLITION AND EROSION CONTROL PLAN, SEE DRAWING C1.0.
- FOR SITE LAYOUT PLAN, SEE DRAWING C2.0.
- FOR GRADING AND DRAINAGE PLAN, SEE DRAWING C3.0.
- PROTECT AND MAINTAIN EXISTING STORM DRAIN OUTLET PIPES.
- REFER TO DRAWING P2.2 FOR SANITARY SEWER INSIDE BUILDING AT PROPOSED ADDITION.
- REFER TO DRAWING P2.1 AND P2.3 FOR GAS SERVICE AT BUILDING.
- REFER TO DRAWING P2.1 FOR DOMESTIC AND FIRE SERVICE WATER AT BUILDING.
- REFER TO DRAWING M3.0 FOR CHILL WATER SUPPLY/RETURN AT BUILDING.
- REFER TO DRAWING M3.0 FOR HOT WATER SUPPLY/RETURN AT BUILDING.

REUSE EXISTING (2)-4" ELECTRICAL CONDUITS FOR NEW 34.5KV ELECTRICAL SERVICE TO HAMILTON-SMITH HOUSE AND HOOD HOUSE - (ONE ACTIVE AND ONE SPARE) NEW CABLE INSTALLATION BY UNH

PROTECT AND MAINTAIN EXISTING OUTFALL STRUCTURE

UNH SHALL REPLACE EXISTING LEMH WITH 34.5KV SECTOR CABINET

PROTECT AND MAINTAIN EXISTING TELDATA CONDUITS TO HOOD HOUSE

UNH SHALL REPLACE TRANSFORMER, CONCRETE PAD AND PRIMARY CONDUITS, SECONDARY CONDUITS AND ASSOCIATED ELECTRICAL WORK SHALL BE INSTALLED BY CONSTRUCTION MANAGER

SCALE: 1"=20'-0"
0 20 40 FT

H:\10\212107\UNH Hamilton Hall\Civil\DWG\PHASE 2-001212107-C4.0.dwg - 5/07/2015

Client

Structural Engineer
L.A. Fuess Partners 617-948-5626 tel

Civil Engineer
Bryant Associates 617-248-0300 tel

M/E/P/FP Engineers
Fitzemeyer and Tocco Associates, Inc 781-481-0210 tel

Construction Manager
Skanska, Inc. 617-574-1400 tel



DESIGN DEVELOPMENT SET

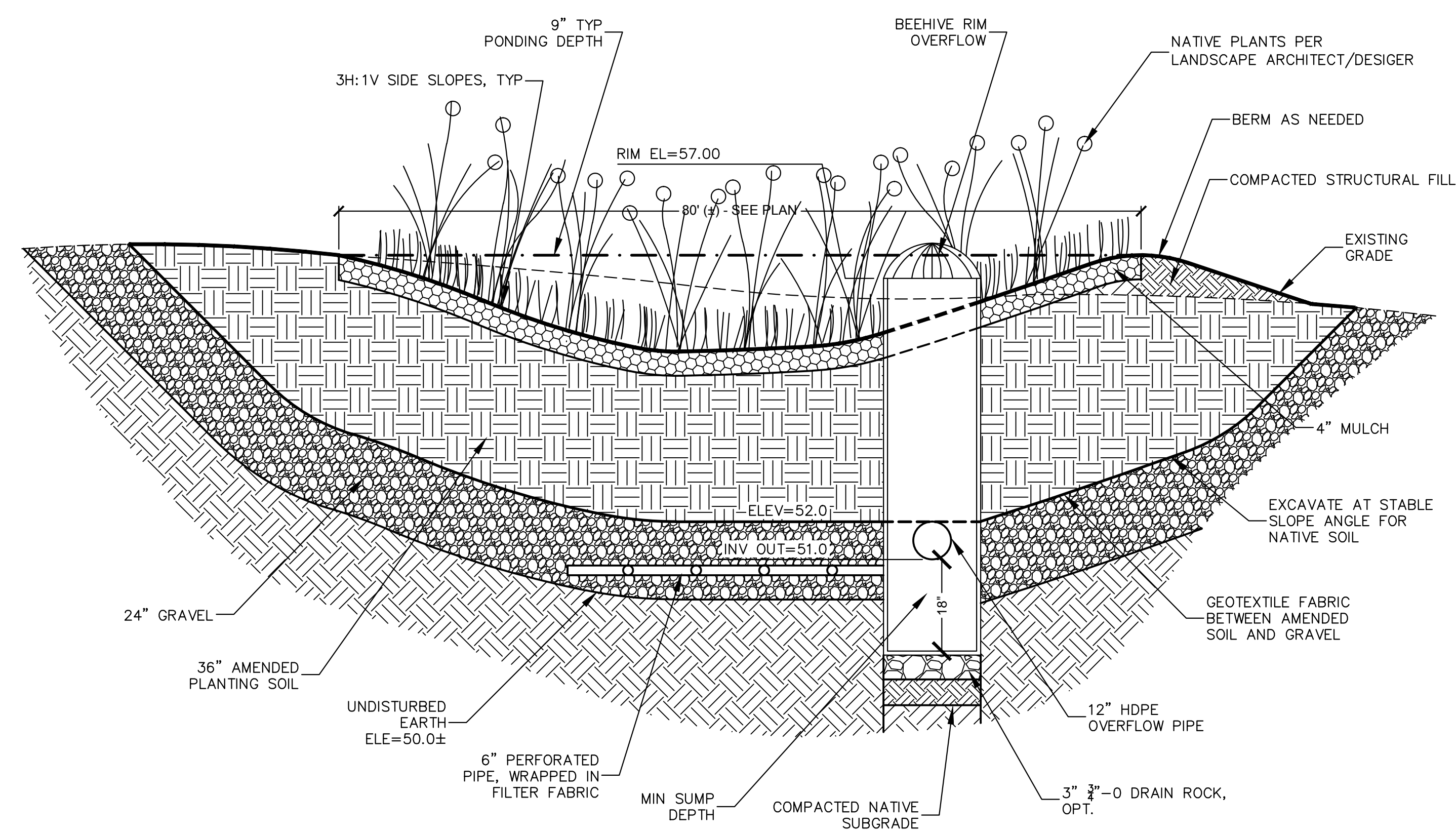
Issue Description	Date
Design Development	5.11.15

Scale:
AS SHOWN
Drawn By: SKL Checked By: SKL/JJC Reviewed By: JJC

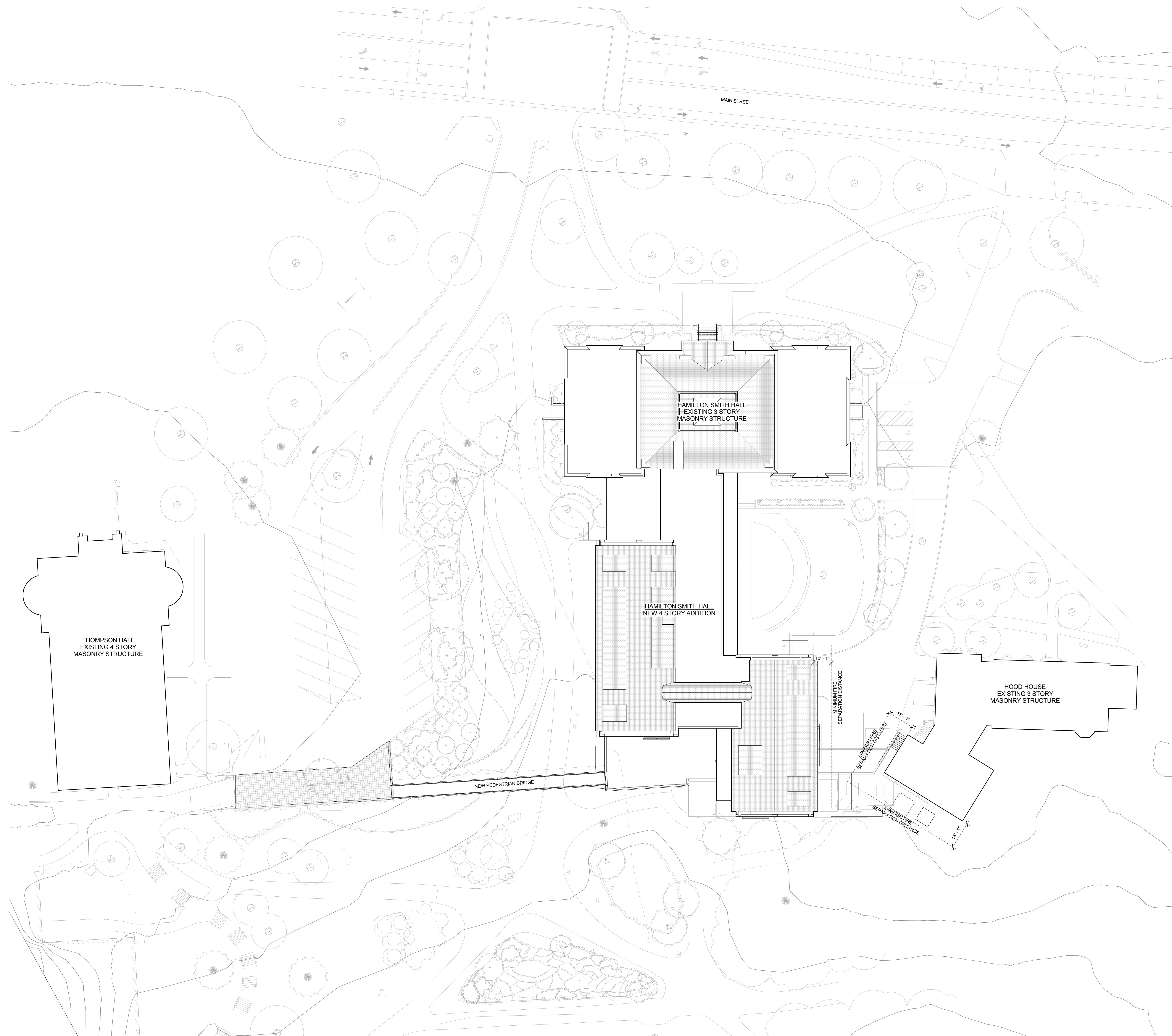
Project No.

CROSS-SECTIONS

C5.1



PROPOSED RAIN GARDEN – SECTION A-A
NOT TO SCALE



Client
 University of New Hampshire

Lighting Consultant
 Collaborative Lighting 978-369-6788

Audio & Visual Consultant
 Acentech 617-499-8000

Landscape Architect
 Woodburn & Co 603-659-5949 tel

Structural Engineer
 L.A. Fuess Partners 617-948-5626 tel

Civil Engineer
 Bryant Associates 617-248-0300 tel

M/E/P/FP Engineers
 Fitzmeyer and Tucci Associates, Inc 781-481-0210 tel

Construction Manager
 Skanska, Inc. 617-574-1400 tel

DESIGN DEVELOPMENT SET

Design Development	5.11.15
Schematic Design	2.14.14
Issue Description	Date

Scale: 1" = 20'-0"
 Drawn By: X
 Checked By: AY
 Reviewed By: DK

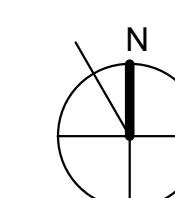
Project No. 2012047.00

Hamilton Smith Hall

95 Main Street | Durham, NH 03824

ARCHITECTURAL SITE PLAN

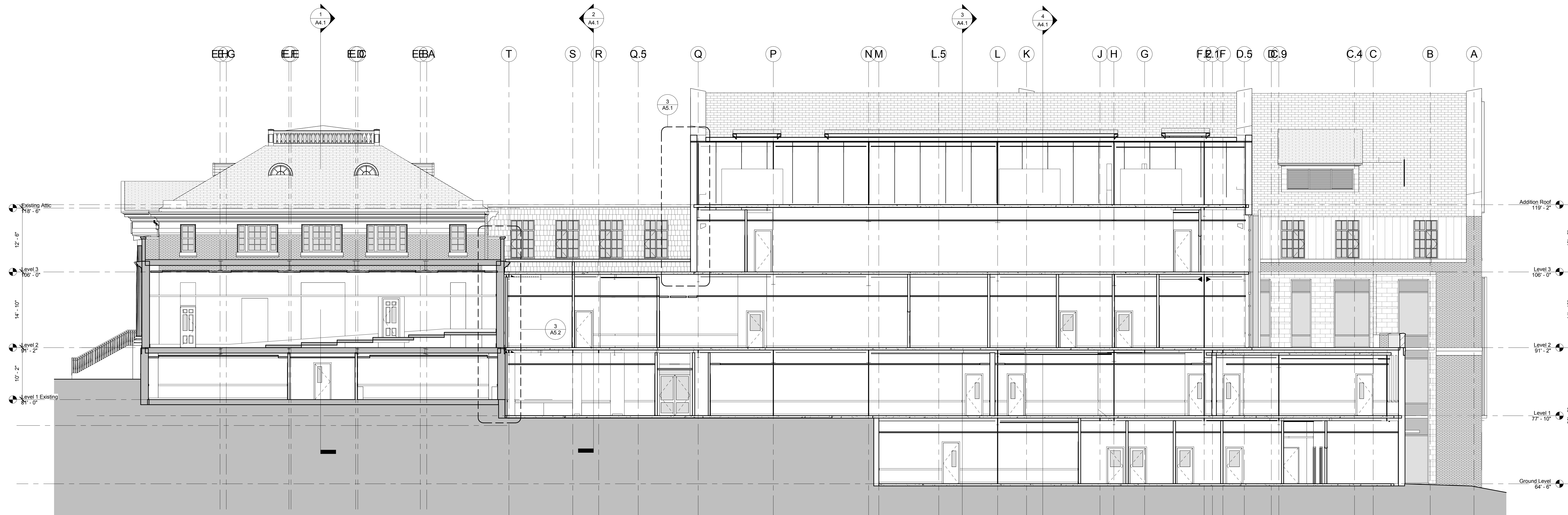
**PROGRESS PRINT
 NOT FOR CONSTRUCTION**



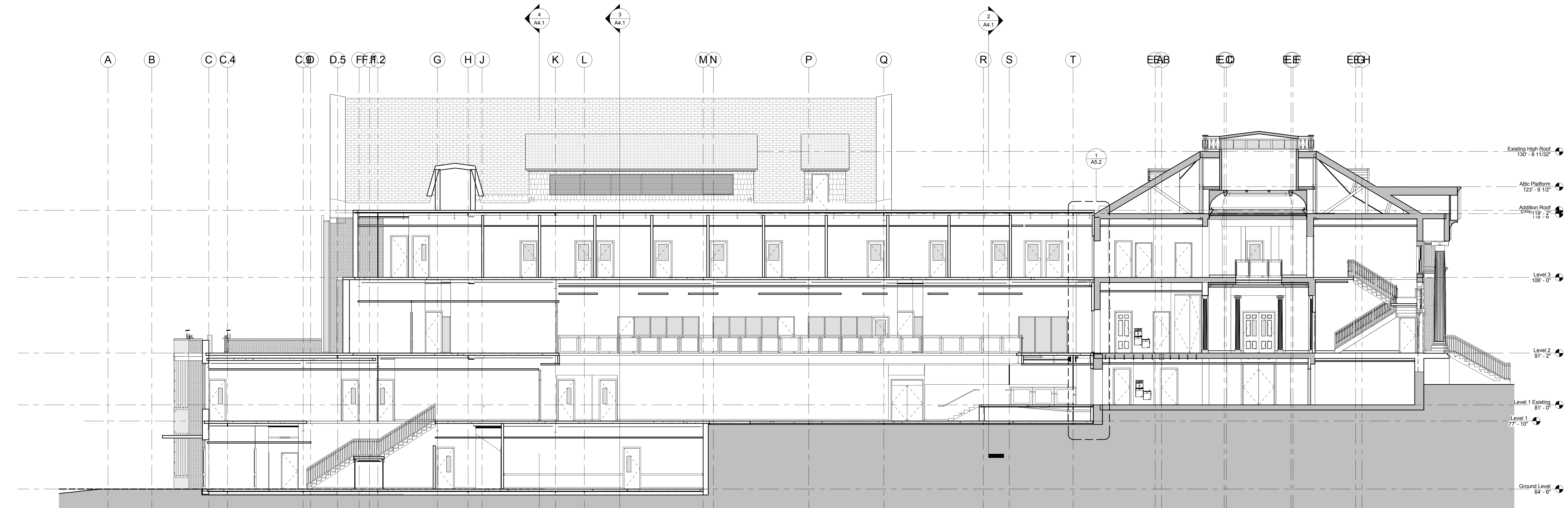
A0.1

Client
 University of New Hampshire

- Lighting Consultant**
Collaborative Lighting 978-369-6788
- Audio & Visual Consultant**
Acentech 617-499-8000
- Landscape Architect**
Woodburn & Co 603-659-5949 tel
- Structural Engineer**
L.A. Fuess Partners 617-948-5626 tel
- Civil Engineer**
Bryant Associates 617-248-0300 tel
- M/E/P/FP Engineers**
Fitzmeyer and Tocci Associates, Inc 781-481-0210 tel
- Construction Manager**
Skanska, Inc. 617-574-1400 tel



2 BUILDING SECTION (EAST)
 1/8" = 1'-0"



1 BUILDING SECTION (WEST)
 1/8" = 1'-0"

DESIGN DEVELOPMENT SET

Issue Description	Date
Design Development	5.11.15
Schematic Design	1/4/13
Scale: 1/8" = 1'-0"	
Drawn By: X	Checked By: AY
	Reviewed By: DK
Project No. 2012047.00	

Hamilton Smith Hall

95 Main Street | Durham, NH 03824

BUILDING SECTIONS

