

Refer to Architectural Drawings of Record for exact door and window configuration.



North Elevation

Autumn Tan color at ground level store front (north & west)
 Soffit color to be 50% Autumn Tan
 Recessed LED lighting at soffit to be spaced for 5 Foot-
 Candle light level at ground floor walking surface



West Elevation

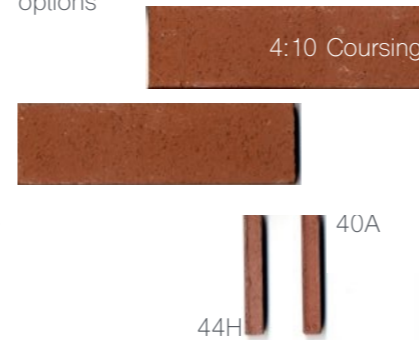
Autumn Tan color at ground level store front (north & west)



South Elevation

Khaki Brown color at entire facade

Photo of accepted thin brick and 2 mortar tint options



Brick with SGS Solomon Mortar Color

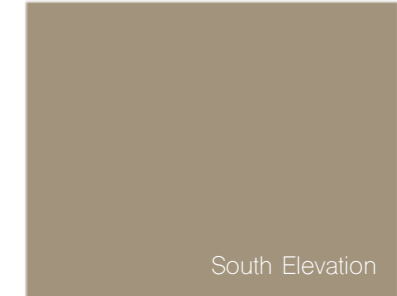


40A option 1



44H option 2

James Hardie Siding Colors: Smooth Face



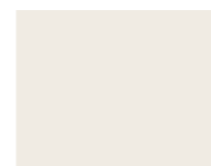
Khaki Brown JH20-30



Autumn Tan JH20-20



Retail Soffit color:
50% Autumn Tan



Trim color:
25% Autumn Tan

44H

option 1

option 2

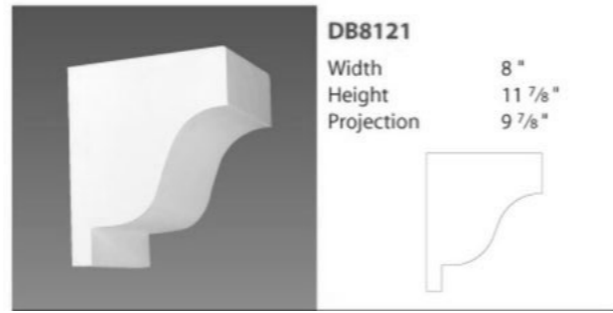
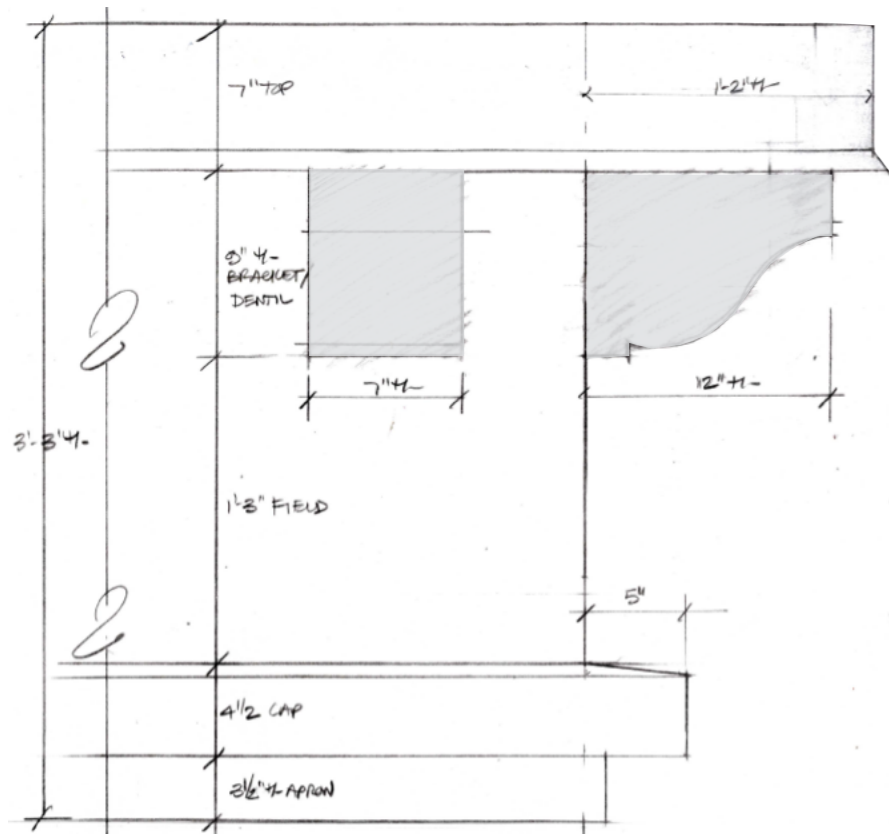
South Elevation

soffit trim

North & West Elevation

REV.	DATE	DESCRIPTION

DRAWN BY: JAMES BR
 SCALE: S.C.3
 DATE: 2-4-14
 PROJECT NO:



Dentil Bracket Profile
 Concept: Size to match 8" high x 7" wide x 12" projection as much as possible

Granite Lintel @ Windows =
 Head = 3 Courses High
 Sill = 2 Courses High



Cap @ Specific Windows =
 Crown over Lintel w/sloped
 Roof pitch: gray color



Anchor Plates
 8"-10" High



Light Concept

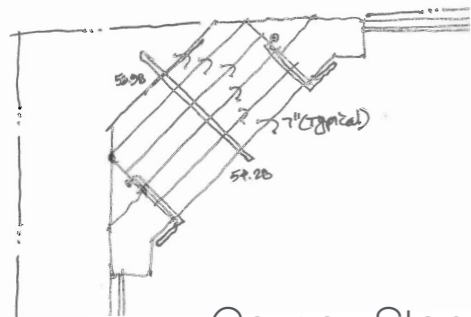
Granite Lintel Band =
 1'-8" +/- in Height



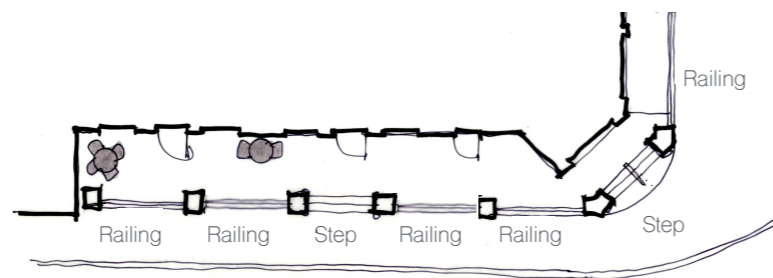
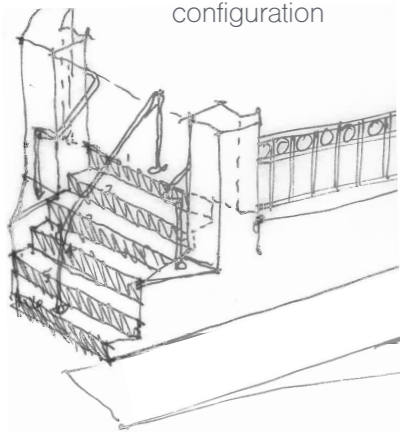
Trajan Roman: "49" font



Black Wrought
 Iron Fencing



Corner Step Concept:
 Site conditions will dictate exact layout and configuration



Railing and Step Concept

REV.	DATE	DESCRIPTION

Drawn by	SCC
Checked by	SAF
Date	2-2-14
Project No.	

49 Main Street Project
 Durham NH

Planning Committee
 Review Drawings

p:\2014\49 Main Street\49 Main Street\49 Main Street.dwg 1/20/14 10:25:58 AM