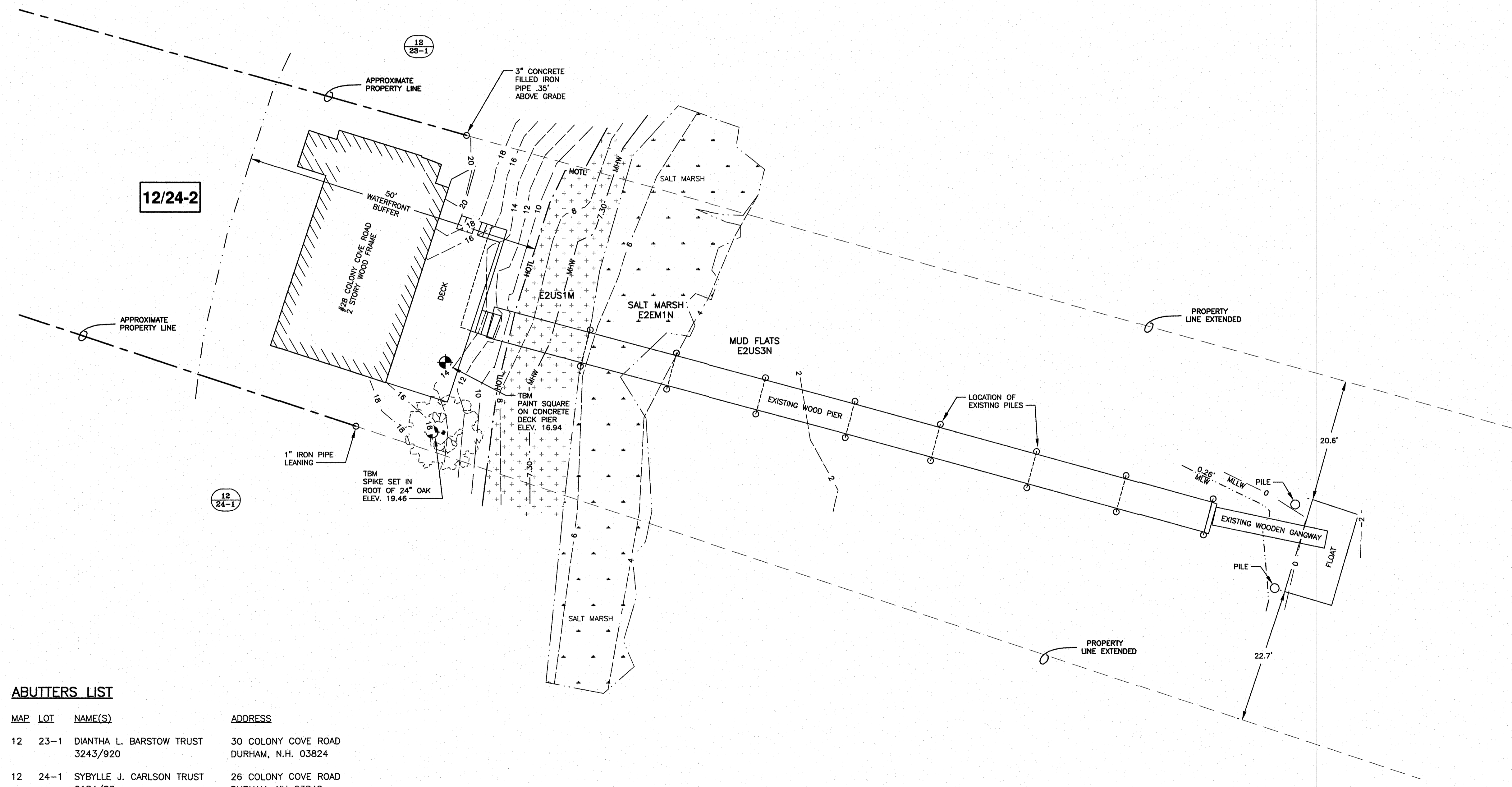


LOCATION MAP SCALE: 1" = 2000'

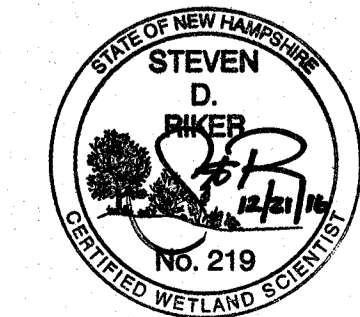
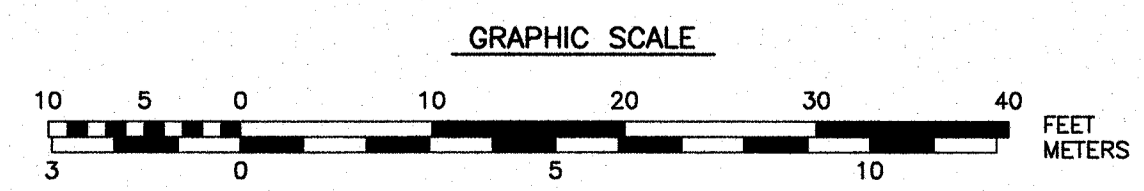
- LEGEND:**
- N/F NOW OR FORMERLY
 - RP RECORD OF PROBATE
 - SCRD STRAFFORD COUNTY REGISTER OF DEEDS
 - 12/23-1 MAP 12/LOT 23-1
 - IP FND IRON PIPE FOUND
 - OVERHEAD ELECTRIC / WIRES
 - MHW MEAN HIGH WATER LINE
 - EDGE OF WETLAND
 - 100 CONTOUR
 - UTILITY POLE (w/ GUY)
 - A-1 EDGE OF WETLAND FLAGGING
 - ② SITE PHOTO LOCATION/DIRECTION

NAV83 (2011)
N
N.H.SFC



ABUTTERS LIST

MAP	LOT	NAME(S)	ADDRESS
12	23-1	DIANTHA L. BARSTOW TRUST 3243/920	30 COLONY COVE ROAD DURHAM, N.H. 03824
12	24-1	SYBYLLE J. CARLSON TRUST 2184/83	26 COLONY COVE ROAD DURHAM, NH 03842



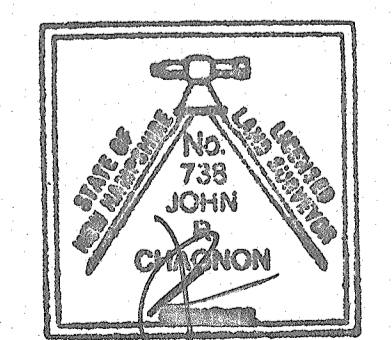
AMBIT ENGINEERING, INC.
Civil Engineers & Land Surveyors
200 Griffin Road - Unit 3
Portsmouth, N.H. 03801-7114
Tel (603) 430-9282
Fax (603) 436-2315



- NOTES:**
- PROJECT LOCATION:
28 COLONY COVE ROAD
DURHAM, NH 03842
PARCEL I.D.:
TAX MAP 12/ LOT 24-2
OWNER:
GREAT AMERICAN PROPERTIES, LLC
64 PLEASANT STREET
CHICHESTER, NH 03258
4398/591
ZONING DISTRICT:
RC / RESIDENCE COASTAL
 - BOUNDARY FROM DEED OF RECORD.
 - LOT AREA: 0.25± AC/ 10,928± SF
 - THE PURPOSE OF THIS PLAN IS TO SHOW THE LOCATION OF PROPOSED PIER MODIFICATIONS AT THE SITE.
 - THE CONTRACTOR SHALL NOTIFY DIG SAFE AT 1-888-DIG-SAFE (1-888-344-7233) AT LEAST 72 HOURS PRIOR TO COMMENCING ANY EXCAVATION ON PUBLIC OR PRIVATE PROPERTY.
 - UNDERGROUND UTILITY LOCATIONS ARE BASED UPON BEST AVAILABLE EVIDENCE AND ARE NOT FIELD VERIFIED. LOCATING AND PROTECTING ANY ABOVEGROUND OR UNDERGROUND UTILITIES IS THE SOLE RESPONSIBILITY OF THE CONTRACTOR AND/OR THE OWNER. UTILITY CONFLICTS SHOULD BE REPORTED AT ONCE TO THE DESIGN ENGINEER.
 - CONTRACTOR SHALL INSTALL AND MAINTAIN EROSION CONTROL MEASURES IN ACCORDANCE WITH THE "NEW HAMPSHIRE STORMWATER MANUAL, VOLUME 3, EROSION AND SEDIMENT CONTROLS DURING CONSTRUCTION. (NHDES DECEMBER 2008).
 - THE LIMIT OF WORK IS TO BE CLEARLY UNDERSTOOD WITHIN THE JURISDICTIONAL AREAS PRIOR TO THE COMMENCEMENT OF CONSTRUCTION.
 - HIGHEST OBSERVABLE TIDE LINE WAS DELINEATED BY STEVEN D. RIKER (CWS 219) ON 12/14/16. WETLAND DELINEATION WAS CONDUCTED IN ACCORDANCE WITH THE 1987 ARMY CORPS OF ENGINEERS DELINEATION MANUAL AND REGIONAL SUPPLEMENT TO THE CORPS OF ENGINEERS WETLAND DELINEATION MANUAL, NORTH CENTRAL AND NORTHEAST REGION, VERSION 2.0, JANUARY 2012, USING THE ROUTINE DETERMINATIONS METHOD, AS REQUIRED BY THE NEW HAMPSHIRE DEPARTMENT OF ENVIRONMENTAL SERVICES WETLANDS BUREAU AND THE US ARMY CORPS OF ENGINEERS. FLAGS WERE LOCATED BY AMBIT ENGINEERING.
 - VERTICAL DATUM: MEAN LOWER LOW WATER (MLLW). BASIS OF VERTICAL DATUM IS REDUNDANT RTN GPS OBSERVATIONS (±0.3'), REDUCTION FROM NAVD83 TO MLLW BASED ON NOAA STATION 8420411, DOVER, COCHECO RIVER. MLLW BEING 3.93' LOWER THAN 0 NAVD83.
 - EXISTING DOCK STRUCTURE IS NOT LOCATED ADJACENT TO, OR IN PROXIMITY OF A FEDERAL NAVIGATIONAL CHANNEL, AS ONE DOES NOT EXIST IN THIS WATERBODY (LITTLE BAY).

GREAT AMERICAN PROPERTIES, LLC
28 COLONY COVE RD.
DURHAM, N.H.

NO.	DESCRIPTION	DATE
0	ISSUED FOR COMMENT	12/21/16
REVISIONS		



SCALE: 1" = 10' DECEMBER 2016

EXISTING CONDITIONS PLAN **C1**

J:\JOB52\IN25002\IN 2550\1 JUN 2552\2552.06 Edmond 28 Colony Cove Rd., Durham NH\2016 Permitting\Plans & Specs\Site\2016_DOCK_PERMIT_PLAN.dwg, EXIST_COND_C1