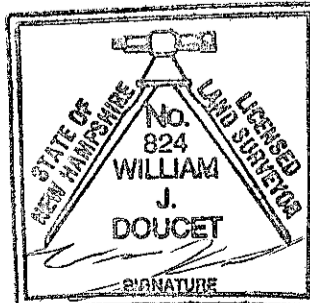


NO.	DATE	DESCRIPTION	BY

NOTE: ALL ELECTRIC, GAS, TEL, WATER, SEWER AND DRAIN SERVICES ARE SHOWN IN SCHEMATIC FASHION, THEIR LOCATIONS ARE NOT PRECISE OR NECESSARILY ACCURATE. NO WORK WHATSOEVER SHALL BE UNDERTAKEN ON THIS SITE USING THIS PLAN TO LOCATE THE ABOVE SERVICES. CONSULT WITH THE PROPER AUTHORITIES CONCERNED WITH THE SUBJECT SERVICE LOCATIONS FOR INFORMATION REGARDING SUCH. CALL DIG-SAFE AT 1-888-DIG-SAFE.

SHEET 2



I certify that this survey plot is not a subdivision pursuant to this title (N.H.R.S.A. Title LXIV) and that the lines of streets and ways shown are those of public or private streets or ways already established and that no new ways are shown.

I certify that this survey and plan were prepared by me or by those under my direct supervision and falls under the Urban Survey Classification of the NH Code of Administrative Rules of the Board of Licensure for Land Surveyors. I certify that this survey was made on the ground and is correct to the best of my knowledge and belief. Random traverse survey by Total Station, with a precision greater than 1:15,000.

[Signature] L.L.S. #824
8-10-12 DATE

The certifications shown hereon are intended to meet registry of deed requirements and are not a certification to title or ownership of property shown. Owners of adjoining properties are according to current town assessors records.

COVER SHEET
AS-BUILT PLAN
OF
"THE COTTAGES OF DURHAM"
FOR
CAPSTONE COMPANIES
(TAX MAP 9, LOT 10-3)
TECHNOLOGY DRIVE
DURHAM, NEW HAMPSHIRE

DRAWN BY: M.W.F.	DATE: AUGUST 1, 2012
CHECKED BY: W.J.D.	DRAWING NO.: 2957F
JOB NO.: 2957	SHEET 1 OF 18

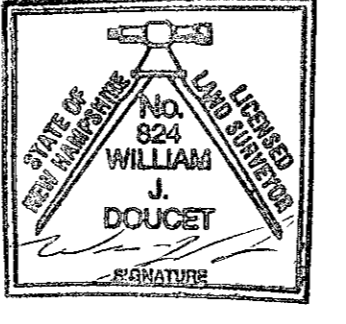


DRAINAGE TABLE	
CB #2586	RIM ELEV.=103.0'
(A) 12" HDPE INV.=99.4'	
(B) 12" HDPE INV.=99.3'	
DMH #2630	RIM ELEV.=106.8'
(A) 12" HDPE INV.=103.6'	
(B) 12" HDPE INV.=103.6'	
CB #2643	RIM ELEV.=107.7'
(A) 12" HDPE INV.=104.6'	
(B) 12" HDPE INV.=105.7'	
CB #2650	RIM ELEV.=108.1'
(A) 12" HDPE INV.=105.2'	
(B) 12" HDPE INV.=105.3'	
(C) 12" HDPE INV.=105.2'	
CB #2657	RIM ELEV.=104.1'
(A) 12" HDPE INV.=100.0'	
(B) 12" HDPE INV.=100.0'	
DMH #2676	RIM ELEV.=102.9'
(A) 12" HDPE INV.=99.5'	
(B) 12" HDPE INV.=99.4'	
CB #2681	RIM ELEV.=103.0'
12" HDPE INV.=98.8'	
DMH #2694	RIM ELEV.=102.1'
(A) 12" HDPE INV.=97.1'	
(B) 12" HDPE INV.=98.1'	
(C) 12" HDPE INV.=98.1'	
(D) 12" HDPE INV.=95.2'	
CB #2704	RIM ELEV.=101.6'
(A) 12" HDPE INV.=97.4'	
(B) 12" HDPE INV.=97.4'	
CB #2742	RIM ELEV.=102.7'
(A) 12" HDPE INV.=99.0'	
(B) 12" HDPE INV.=98.9'	
CB #2749	RIM ELEV.=102.3'
12" HDPE INV.=99.2'	
CB #2775	RIM ELEV.=103.1'
(A) 12" HDPE INV.=99.9'	
(B) 12" HDPE INV.=102.2'	
CB #2825	RIM ELEV.=105.6'
12" HDPE INV.=102.3'	
CB #2849	RIM ELEV.=106.5'
12" HDPE INV.=103.3'	
CB #2926	RIM ELEV.=108.7'
(A) 12" HDPE INV.=104.7'	
(B) 12" HDPE INV.=104.6'	
DMH #2975	RIM ELEV.=109.5'
(A) 12" HDPE INV.=106.1'	
(B) 12" HDPE INV.=106.2'	
CB #3302	RIM ELEV.=108.1'
(A) 12" HDPE INV.=105.0'	
(B) 12" HDPE INV.=105.0'	
CB #3346	RIM ELEV.=108.8'
12" HDPE INV.=105.2'	
CB #3476	RIM ELEV.=110.6'
12" HDPE INV.=106.5'	
CB #3593	RIM ELEV.=107.3'
(A) TOH INV.=105.3'	
(B) 12" HDPE INV.=103.9'	
(C) 12" HDPE INV.=103.8'	
CB #3602	RIM ELEV.=106.4'
(A) 12" HDPE INV.=103.0'	
(B) 12" HDPE INV.=103.1'	
DMH #3612	RIM ELEV.=106.3'
(A) 12" HDPE INV.=102.9'	
(B) 12" HDPE INV.=102.9'	
CB #3639	RIM ELEV.=109.1'
12" HDPE INV.=105.2'	
CB #3720	RIM ELEV.=108.1'
12" HDPE INV.=105.7'	
CB #3821	RIM ELEV.=103.0'
(A) 12" HDPE INV.=99.4'	
(B) 12" HDPE INV.=99.5'	
(C) 12" HDPE INV.=98.9'	
CB #3853	RIM ELEV.=104.4'
(A) 12" HDPE INV.=101.0'	
(B) 12" HDPE INV.=101.1'	
DMH #3870	RIM ELEV.=106.0'
(A) 12" HDPE INV.=102.5'	
(B) 12" HDPE INV.=102.6'	
CB #3875	RIM ELEV.=103.8'
(A) 12" HDPE INV.=100.2'	
(B) 12" HDPE INV.=100.3'	
(C) 12" HDPE INV.=100.5'	
(D) 12" HDPE INV.=100.4'	

SEWER TABLE	
SMH #1855	RIM ELEV.=104.1'
(A) 18" PVC INV.=87.4' (C.C.)	
(B) 12" PVC INV.=87.6' (C.C.)	
(C) 18" PVC INV.=87.4' (C.C.)	
(D) 12" PVC INV.=87.6' (C.C.)	
SMH #1708	RIM ELEV.=102.2'
(A) 18" PVC INV.=87.8' (C.C.)	
(B) 12" PVC INV.=87.8' (C.C.)	
(C) 18" PVC INV.=87.8' (C.C.)	
(D) 12" PVC INV.=87.9' (C.C.)	
SMH #1783	RIM ELEV.=100.0'
(A) 18" PVC INV.=88.1' (C.C.)	
(B) 12" PVC INV.=88.4' (C.C.)	
(C) 18" PVC INV.=88.4' (C.C.)	
(D) 12" PVC INV.=88.4' (C.C.)	
SMH #1839	RIM ELEV.=98.0'
(A) 18" PVC INV.=88.7' (C.C.)	
(B) 12" PVC INV.=88.8' (C.C.)	
(C) 18" PVC INV.=88.8' (C.C.)	
(D) 12" PVC INV.=88.8' (C.C.)	
SMH #2151	RIM ELEV.=102.7'
8" PVC INV.=97.3' (C.C.)	
SMH #2193	RIM ELEV.=102.0'
8" PVC INV.=97.2' (C.C.)	
SMH #2232	RIM ELEV.=95.8'
18" PVC INV.=89.0' (C.C.)	
SMH #2623	RIM ELEV.=104.5'
8" PVC INV.=96.5' (C.C.)	
SMH #2675	RIM ELEV.=103.7'
8" PVC INV.=96.2' (C.C.)	
SMH #3112	RIM ELEV.=105.8'
8" PVC INV.=100.2' (C.C.)	
SMH #3314	RIM ELEV.=108.2'
(A) 4" PVC INV.=102.7' (C.C.)	
(B) 8" PVC INV.=102.7' (C.C.)	
(C) 4" PVC INV.=102.7' (C.C.)	
SMH #3504	RIM ELEV.=109.7'
8" PVC INV.=100.7' (C.C.)	
SMH #3803	RIM ELEV.=107.5'
(A) 8" PVC INV.=94.5'	
(B) 8" PVC INV.=99.3'	
(C) 8" PVC INV.=94.5'	
SMH #3825	RIM ELEV.=103.7'
8" PVC INV.=94.9' (C.C.)	
SMH #3840	RIM ELEV.=103.7'
8" PVC INV.=95.6' (C.C.)	
SMH #4007	RIM ELEV.=102.2'
(A) 8" PVC INV.=96.2'	
(B) 8" PVC INV.=96.2'	
(C) 8" PVC INV.=96.2' (C.C.)	
(D) 8" PVC INV.=96.1'	
SMH #4196	RIM ELEV.=103.6'
(A) 8" PVC INV.=98.7' (C.C.)	
(B) 8" PVC INV.=98.7' (C.C.)	
(C) 8" PVC INV.=98.7' (C.C.)	
(D) 8" PVC INV.=98.7' (C.C.)	
SMH #4263	RIM ELEV.=104.1'
8" PVC INV.=98.1' (C.C.)	
SMH #4707	RIM ELEV.=102.4'
8" PVC INV.=97.4' (C.C.)	
SMH #4915	RIM ELEV.=105.0'
(A) 4" PVC INV.=101.0'	
(B) 8" PVC INV.=96.8'	
(C) 8" PVC INV.=96.8'	

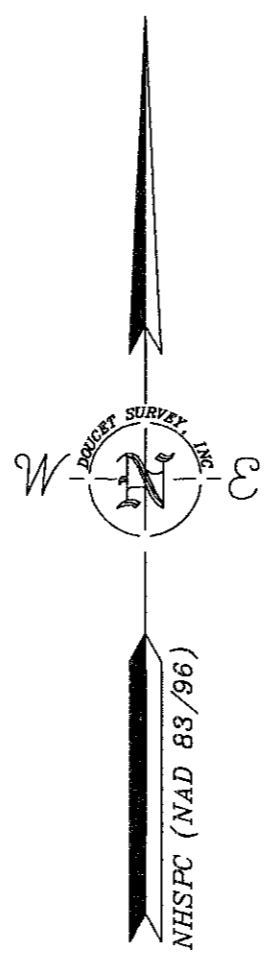
I certify that this survey plot is not a subdivision pursuant to this title (N.H.R.S. Title LXV) and that the lines of streets and ways shown are those of public or private streets or ways already established and that no new ways are shown.

I certify that this survey and plan were prepared by me or by those under my direct supervision and falls under the Urban Survey Classification of the NH Code of Administrative Rules of the Board of Licensure for Land Surveyors. I certify that this survey was made on the ground and is correct to the best of my knowledge and belief. Random traverse survey by Total Station, with a precision greater than 1:15,000.



W. J. DOUCET L.L.S. #824
 8-10-12 DATE

The certifications shown herein are intended to meet registry of deed requirements and are not a certification to title or ownership of property shown. Owners of adjoining properties are according to current town assessors records.

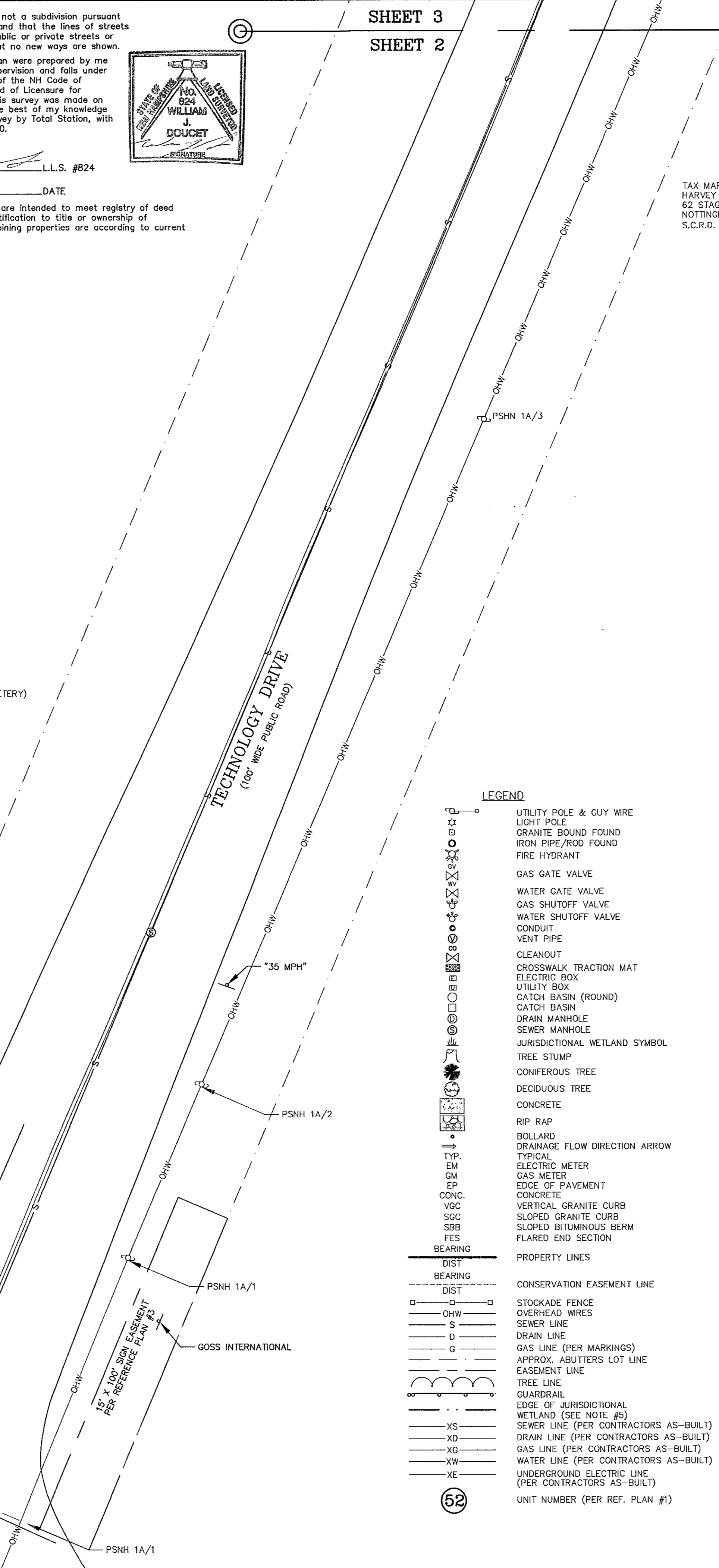


TAX MAP 9 LOT 24-0
 PART OF DURHAM (MAIN ST CEMETERY)
 15 NEWMARKET RD
 DURHAM, NH 03824
 S.C.R.D. BOOK 419, PAGE 63

NO.	DATE	DESCRIPTION	BY

NOTE:
 ALL ELECTRIC, GAS, TEL, WATER, SEWER AND DRAIN SERVICES ARE SHOWN IN SCHEMATIC FASHION, THEIR LOCATIONS ARE NOT PRECISE OR NECESSARILY ACCURATE. NO WORK WHATSOEVER SHALL BE UNDERTAKEN ON THIS SITE USING THIS PLAN TO LOCATE THE ABOVE SERVICES. CONSULT WITH THE PROPER AUTHORITIES CONCERNED WITH THE SUBJECT SERVICE LOCATIONS FOR INFORMATION REGARDING SUCH. CALL DIG-SAFE AT 1-888-DIG-SAFE.

SHEET 3
 SHEET 2



TAX MAP 9 LOT 10-1
 HARVEY W. WOODWARD
 62 STAGE RD
 NOTTINGHAM, NH 03290
 S.C.R.D. BOOK 1721, PAGE 201

NOTES:

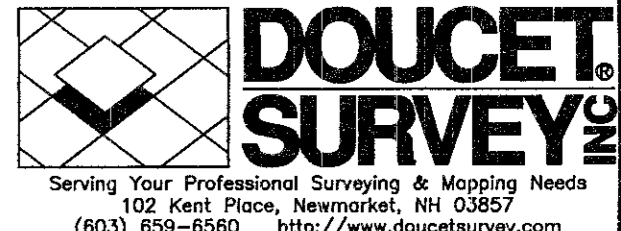
- REFERENCE: TAX MAP 9, LOT 10-3
- TOTAL PARCEL AREA: 1,786,000 SQ. OR 41.0 AC.
- OWNER OF RECORD:
 CDC NEW HAMPSHIRE LLC
 P.O. BOX 530292
 BIRMINGHAM, AL 35253
 S.C.R.D. BOOK 3940, PAGE 864
 S.C.R.D. BOOK 3940, PAGE 861
- ZONE: ORLI - OFFICE RESEARCH LIGHT INDUSTRIAL
 WETLAND CONSERVATION OVERLAY DISTRICT
 SHORELAND PROTECTION OVERLAY DISTRICT
 AQUIFER PROTECTION OVERLAY DISTRICT
DIMENSIONAL REQUIREMENTS:
 MIN. LOT AREA 40,000 sq. ft.
 MIN. LOT AREA / DWELLING UNIT 4,200 sq. ft.
 MIN. FRONTAGE 150 ft.
 MIN. FRONT SETBACK 30 ft.
 MIN. SIDE/REAR SETBACK 20 ft.
 MAX. BUILDING HEIGHT 40 ft.
 PERMITTED WITH PLANNING BOARD APPROVAL UNDER RSA 676:4
 MAX. BUILDING COVERAGE 50 50 ft.
WETLAND SETBACKS:
 >3,000 sq. ft. CONTIGUOUS WETLAND 75 ft.
 VERNAL POOLS 100 ft.
SHORELAND SETBACKS:
 STRUCTURES 125 ft.
 CONSTRUCTION WITHIN 250 FT. IS SUBJECT TO A CONDITIONAL USE PERMIT
- SOILS - THIS MAP PRODUCT IS WITHIN THE TECHNICAL STANDARDS OF THE NATIONAL COOPERATIVE SOIL SURVEY. IT IS A SPECIAL PURPOSE PRODUCT, INTENDED FOR LAND USE PLANNING. IT WAS PRODUCED BY A PROFESSIONAL SOIL SCIENTIST, IN COMPLIANCE WITH THE NEW HAMPSHIRE JOINT BOARD OF LICENSURE AND CERTIFICATION RULES (STATE STATUTE CHAPTER 310-A:79), AND IS NOT A PRODUCT OF THE USDA, NATURAL RESOURCES CONSERVATION SERVICE. A LETTER REPORT BY NORMANDEAU ASSOCIATES DATED NOVEMBER 30, 2010 ACCOMPANIES THIS MAP AND PROVIDES DETAILED INFORMATION ON THE SOIL MAP UNITS.
WETLANDS - JURISDICTIONAL WETLANDS WERE DELINEATED BY NORMANDEAU ASSOCIATES IN OCTOBER, 2010 USING THE METHODS OUTLINED IN THE TECHNICAL REPORT Y-87-1 CORPS OF ENGINEERS WETLANDS DELINEATION MANUAL, JANUARY 1987 AND THE INTERIM REGIONAL SUPPLEMENT TO THE CORPS OF ENGINEERS WETLANDS DELINEATION MANUAL: NORTH-CENTRAL AND NORTHEAST REGION, OCTOBER 2009.
- PER RSA 289:3(b) NO NEW CONSTRUCTION, EXCAVATION, OR BUILDING SHALL BE CONDUCTED WITHIN 25 FEET OF A KNOWN BURIAL SITE OR WITHIN 25 FEET OF THE BOUNDARIES OF AN ESTABLISHED BURIAL GROUND OR CEMETERY. SEE RSA FOR ADDITIONAL DETAILS.
- HORIZONTAL DATUM BASED ON NAD83(CORS96) NEW HAMPSHIRE STATE PLANE 2800 DERIVED FROM STATIC GPS OBSERVATIONS PROCESSED BY THE NATIONAL GEODETIC SURVEY ON-LINE POSITIONING USER SERVICE (OPUS).
- VERTICAL DATUM IS BASED ON NAVD29 (DISKS "GAGING STATION" & "GAGING STATION WEST").
- THE INTENT OF THIS PLAN IS TO SHOW THE LOCATION OF SITE IMPROVEMENTS RELATIVE TO THE PARCEL BOUNDARY.
- WATER BOUNDARIES ARE DYNAMIC IN NATURE AND ARE SUBJECT TO CHANGE DUE TO NATURAL CAUSES SUCH AS EROSION OR ACCRETION.
- EASEMENTS OF RECORD:
 A. ACCESS & UTILITY EASEMENT W/RESTRICTIONS PER S.C.R.D. BK. 2938 PG. 501 ALL RIGHT TITLE AND INTEREST TO TECHNOLOGY DRIVE AS SET FORTH IN EASEMENT DEED S.C.R.D. BK. 1150, PG. 614.
 B. TRACTOR CROSSING EASEMENT S.C.R.D. BK. 1150, PG. 614
 C. 25' WIDE UTILITY EASEMENT, S.C.R.D. BK. 1182, PG. 27
- THE PARCEL IS ALSO SUBJECT TO THE STATE OF NH SHORELAND PROTECTION DISTRICT LIMITS WITHIN THE PROTECTED SHORELAND 250 FT.
 NATURAL WOODLAND BUFFER RESTRICTIONS 150 ft.
 NEW SEPTIC SYSTEM LEACHFIELD SETBACK 125 ft.
 PRIMARY BUILDING LINE 50 ft.
- FIELD SURVEY PERFORMED BY J.M.L. & L.P.S. DURING 07/12 USING A GOMMETER 600 PRO TOTAL STATION WITH A TDS RANGER DATA COLLECTOR AND A SOKKIA B21 AUTO LEVEL. TRAVERSE ADJUSTMENT BASED ON LEAST SQUARE ANALYSIS.
 FIELD SURVEY PERFORMED BY E.J.S. DURING 07/12 USING A TRIMBLE S6 TOTAL STATION WITH A TRIMBLE TSC3 DATA COLLECTOR. TRAVERSE ADJUSTMENT BASED ON LEAST SQUARE ANALYSIS.
- ON JANUARY 25, 2011 THE DURHAM ZONING BOARD OF ADJUSTMENT APPROVED AN APPLICATION FOR VARIANCE FOR THE FILING OF WETLANDS AND THE PLACEMENT OF BUILDINGS WITHIN THE WETLAND SETBACK. THE ABOVE STATED BUILDINGS ARE SHOWN HEREON AS BUILDING #19-22, 28 & 29, 51-54 AND THE CLUBHOUSE.

REFERENCE PLANS:

- "THE COTTAGES OF DURHAM" UTILITIES PLAN, BY APPLIED ENGINEERING A DIVISION OF TIGHE & BOND, DATED JULY 11, 2001.
- "LOT LINE REVISION PLAN FOR CAPSTONE COMPANIES LAND OF WILLIAM S. & EDNA H. WOODWARD & JOHN B. & CANDICE L. SHEA", BY DOUCET SURVEY, INC., DATED MAY 17, 2011.
- "PLAN OF LAND" FOR HARRIS GRAPHICS CORPORATION, DOVER OPERATION, BY EGM, ERIC C. MITCHELL AND ASSOCIATES, INC., DATED MARCH 20, 1991. S.C.R.D. PLAN #41-8.

AS-BUILT PLAN
 OF
 "THE COTTAGES OF DURHAM"
 FOR
 CAPSTONE COMPANIES
 (TAX MAP 9, LOT 10-3)
 TECHNOLOGY DRIVE
 DURHAM, NEW HAMPSHIRE

DRAWN BY: M.W.F.	DATE: AUGUST 1, 2012
CHECKED BY: W.J.D.	DATE: 2957F
JOB NO.: 2957	SHEET 2 OF 18



SHEET 7
SHEET 3

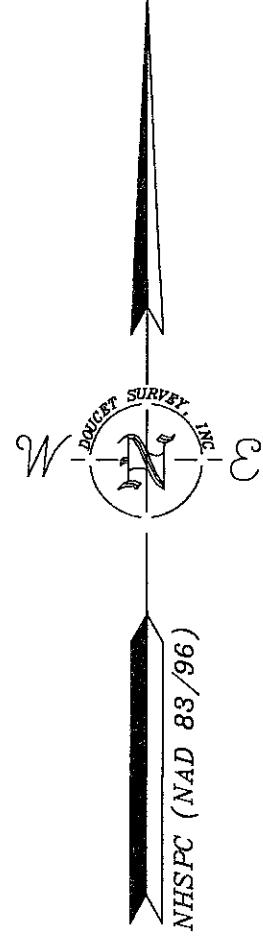
SHEET 8
SHEET 3

5/8" REBAR
SET, UP 3"
W/CONSERVATION CAP

VERNAL POOL
50,156 sq. ft.
1.151 acres

TAX MAP 9 LOT 24-0
TOWN OF DURHAM (MAIN ST CEMETERY)
15 NEWMARKET RD
DURHAM, NH 03824
S.C.R.D. BOOK 419, PAGE 63

TAX MAP 9 LOT 10-1
HARVEY W. WOODWARD
62 STAGE RD
NOTTINGHAM, NH 03290
S.C.R.D. BOOK 1721, PAGE 201



SHEET 4
SHEET 3

- LEGEND**
- UTILITY POLE & GUY WIRE
 - LIGHT POLE
 - GRANITE BOUND FOUND
 - IRON PIPE/ROD FOUND
 - FIRE HYDRANT
 - GAS GATE VALVE
 - WATER GATE VALVE
 - GAS SHUTOFF VALVE
 - WATER SHUTOFF VALVE
 - CONDUIT
 - VENT PIPE
 - CLEANOUT
 - CROSSWALK TRACTION MAT
 - ELECTRIC BOX
 - UTILITY BOX
 - CATCH BASIN (ROUND)
 - CATCH BASIN
 - DRAIN MANHOLE
 - SEWER MANHOLE
 - JURISDICTIONAL WETLAND SYMBOL
 - TREE STUMP
 - CONIFEROUS TREE
 - DECIDUOUS TREE
 - CONCRETE
 - RIP RAP
 - BOLLARD
 - DRAINAGE FLOW DIRECTION ARROW
 - TYP.
 - EM
 - GM
 - EP
 - CONC.
 - VCC
 - SOC
 - SBB
 - FES
 - BEARING
 - DIST
 - BEARING
 - DIST
 - STOCKADE FENCE
 - OVERHEAD WIRES
 - SEWER LINE
 - DRAIN LINE
 - GAS LINE (PER MARKINGS)
 - APPROX. ABUTTERS LOT LINE
 - EASEMENT LINE
 - TREE LINE
 - GUARDRAIL
 - EDGE OF JURISDICTIONAL WETLAND (SEE NOTE #5)
 - SEWER LINE (PER CONTRACTORS AS-BUILT)
 - DRAIN LINE (PER CONTRACTORS AS-BUILT)
 - GAS LINE (PER CONTRACTORS AS-BUILT)
 - WATER LINE (PER CONTRACTORS AS-BUILT)
 - UNDERGROUND ELECTRIC LINE (PER CONTRACTORS AS-BUILT)
 - UNIT NUMBER (PER REF. PLAN #1)

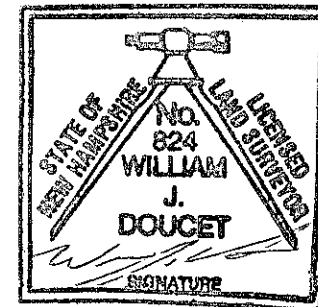
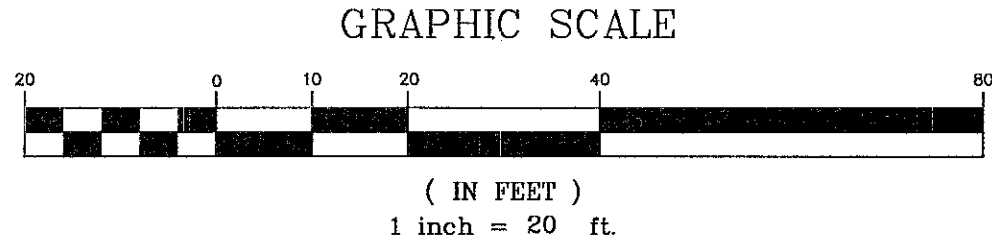
52

I certify that this survey plot is not a subdivision pursuant to this title (NH RSA Title LXIV) and that the lines of streets and ways shown are those of public or private streets or ways already established and that no new ways are shown.

I certify that this survey and plan were prepared by me or by those under my direct supervision and falls under the Urban Survey Classification of the NH Code of Administrative Rules of the Board of Licensure for Land Surveyors. I certify that this survey was made on the ground and is correct to the best of my knowledge and belief. Random traverse survey by Total Station, with a precision greater than 1:15,000.

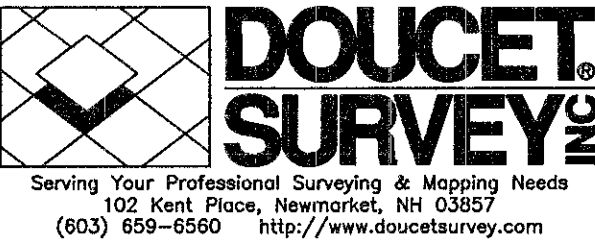
William J. Doucet L.L.S. #824
8-10-12 DATE

The certifications shown hereon are intended to meet registry of deed requirements and are not a certification to title or ownership of property shown. Owners of adjoining properties are according to current town assessors records.



AS-BUILT PLAN
OF
"THE COTTAGES OF DURHAM"
FOR
CAPSTONE COMPANIES
(TAX MAP 9, LOT 10-3)
TECHNOLOGY DRIVE
DURHAM, NEW HAMPSHIRE

DRAWN BY:	M.W.F.	DATE:	AUGUST 1, 2012
CHECKED BY:	W.J.D.	DRAWING NO.:	2957F
JOB NO.:	2957	SHEET	3 OF 18



NO.	DATE	DESCRIPTION	BY

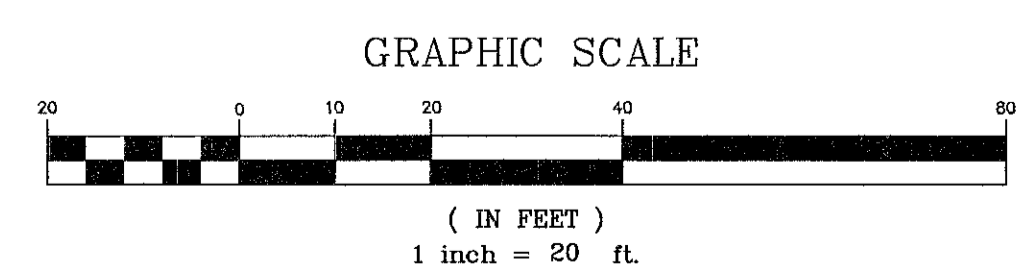
NOTE:
ALL ELECTRIC, GAS, TEL. WATER, SEWER AND DRAIN SERVICES ARE SHOWN IN SCHEMATIC FASHION. THEIR LOCATIONS ARE NOT PRECISE OR NECESSARILY ACCURATE. NO WORK WHATSOEVER SHALL BE UNDERTAKEN ON THIS SITE USING THIS PLAN TO LOCATE THE ABOVE SERVICES. CONSULT WITH THE PROPER AUTHORITIES CONCERNED WITH THE SUBJECT SERVICE LOCATIONS FOR INFORMATION REGARDING SUCH. CALL DIG-SAFE AT 1-888-DIG-SAFE.

THE RIVER OPEN SPACE
PROTECTION AREA
684,600 sq. ft. ±
15.7 acres ±
AREA CALCULATED TO
CENTERLINE OF RIVER

TAX MAP 9 LOT 8-1
ROSE REALTY LLC
282 MAIN ST
DURHAM, NH 03824
S.C.R.D. BOOK 3164, PAGE 456

TAX MAP 9 LOT 24-0
TOWN OF DURHAM (MAIN ST CEMETERY)
15 NEWMARKET RD
DURHAM, NH 03824
S.C.R.D. BOOK 419, PAGE 63

- LEGEND**
- UTILITY POLE & GUY WIRE
 - LIGHT POLE
 - GRANITE BOUND FOUND
 - IRON PIPE/ROD FOUND
 - FIRE HYDRANT
 - GAS GATE VALVE
 - WATER GATE VALVE
 - GAS SHUTOFF VALVE
 - WATER SHUTOFF VALVE
 - CONDUIT
 - VENT PIPE
 - CLEANOUT
 - CROSSWALK TRACTION MAT
 - ELECTRIC BOX
 - UTILITY BOX
 - CATCH BASIN (ROUND)
 - CATCH BASIN
 - DRAIN MANHOLE
 - SEWER MANHOLE
 - JURISDICTIONAL WETLAND SYMBOL
 - TREE STUMP
 - CONIFEROUS TREE
 - DECIDUOUS TREE
 - CONCRETE
 - RIP RAP
 - BOLLARD
 - DRAINAGE FLOW DIRECTION ARROW
 - TYP.
 - EM
 - GM
 - EP
 - CONC.
 - VGC
 - SOC
 - SBB
 - FES
 - BEARING
 - DIST
 - BEARING
 - DIST
 - STOCKADE FENCE
 - OVERHEAD WIRES
 - SEWER LINE
 - DRAIN LINE
 - GAS LINE (PER MARKINGS)
 - APPROX. ADJUTERS LOT LINE
 - EASEMENT LINE
 - TREE LINE
 - GUARDRAIL
 - EDGE OF JURISDICTIONAL WETLAND (SEE NOTE #5)
 - SEWER LINE (PER CONTRACTORS AS-BUILT)
 - DRAIN LINE (PER CONTRACTORS AS-BUILT)
 - GAS LINE (PER CONTRACTORS AS-BUILT)
 - WATER LINE (PER CONTRACTORS AS-BUILT)
 - UNDERGROUND ELECTRIC LINE (PER CONTRACTORS AS-BUILT)
 - UNIT NUMBER (PER REF. PLAN #1)



I certify that this survey plot is not a subdivision pursuant to this title (NHRSA Title LXIV) and that the lines of streets and ways shown are those of public or private streets or ways already established and that no new ways are shown.

I certify that this survey and plan were prepared by me or by those under my direct supervision and falls under the Urban Survey Classification of the NH Code of Administrative Rules of the Board of Licensure for Land Surveyors. I certify that this survey was made on the ground and is correct to the best of my knowledge and belief. Random traverse survey by Total Station, with a precision greater than 1:15,000.

[Signature] L.L.S. #824
8-10-12 DATE

The certifications shown hereon are intended to meet registry of deed requirements and are not a certification to title or ownership of property shown. Owners of adjoining properties are according to current town assessors records.

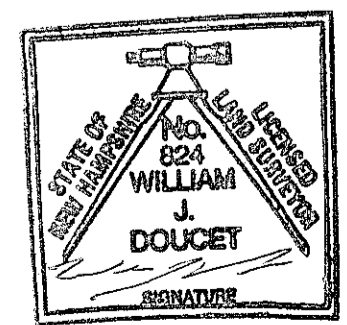
DRAWN BY:	M.W.F.	DATE:	AUGUST 1, 2012
CHECKED BY:	W.J.D.	DRAWING NO.:	2957F
JOB NO.:	2957	SHEET	4 OF 18

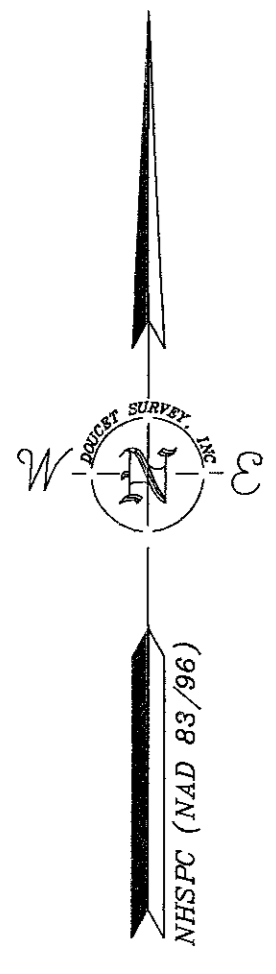
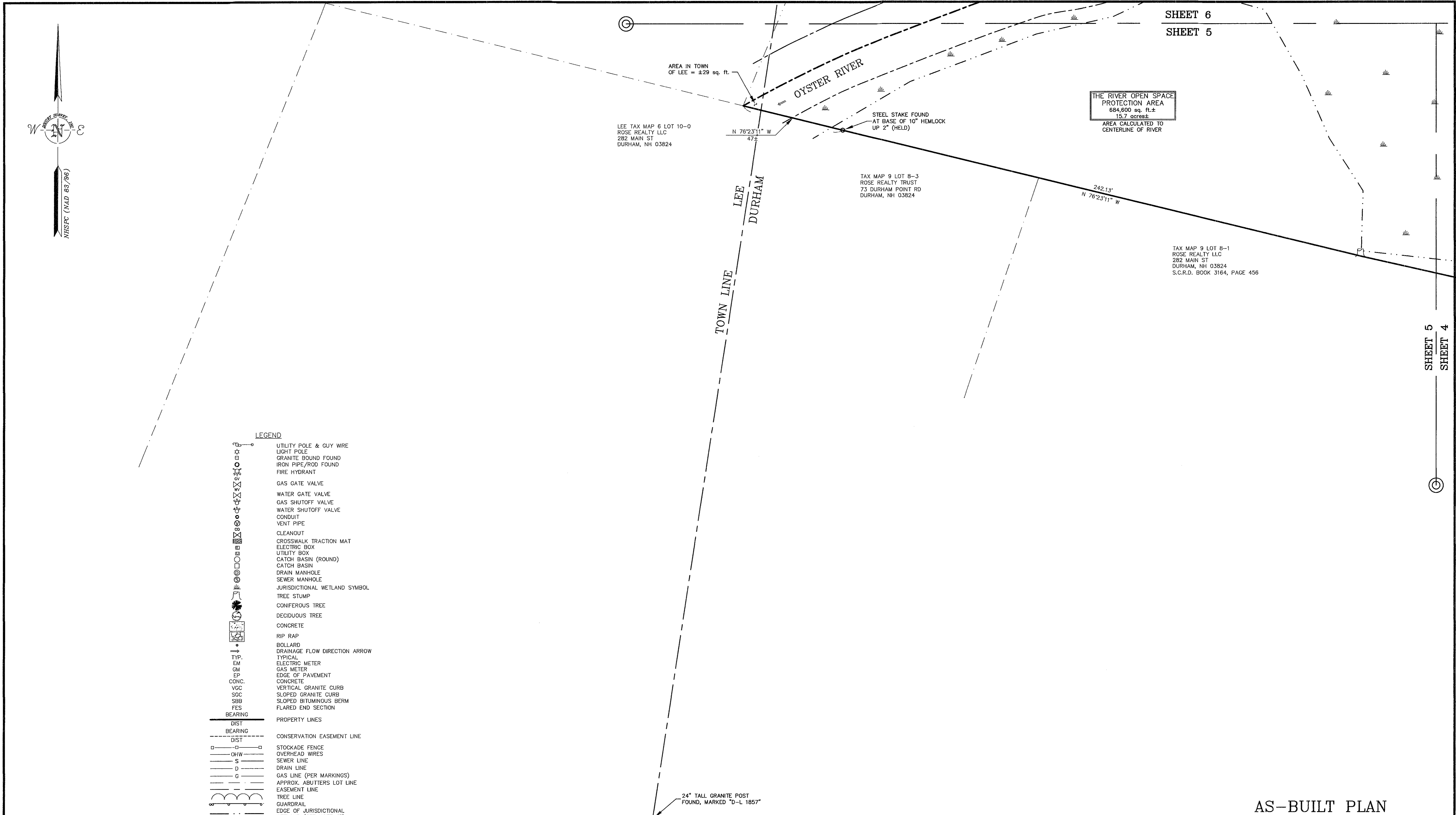
AS-BUILT PLAN
OF
"THE COTTAGES OF DURHAM"
FOR
CAPSTONE COMPANIES
(TAX MAP 9, LOT 10-3)
TECHNOLOGY DRIVE
DURHAM, NEW HAMPSHIRE



NO.	DATE	DESCRIPTION	BY

NOTE:
ALL ELECTRIC, GAS, TEL. WATER, SEWER AND DRAIN SERVICES ARE SHOWN IN SCHEMATIC FASHION, THEIR LOCATIONS ARE NOT PRECISE OR NECESSARILY ACCURATE. NO WORK WHATSOEVER SHALL BE UNDERTAKEN ON THIS SITE USING THIS PLAN TO LOCATE THE ABOVE SERVICES. CONSULT WITH THE PROPER AUTHORITIES CONCERNED WITH THE SUBJECT SERVICE LOCATIONS FOR INFORMATION REGARDING SUCH. CALL DIG-SAFE AT 1-888-DIG-SAFE.



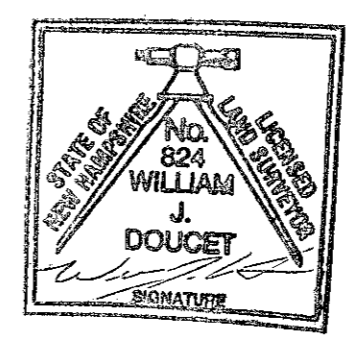
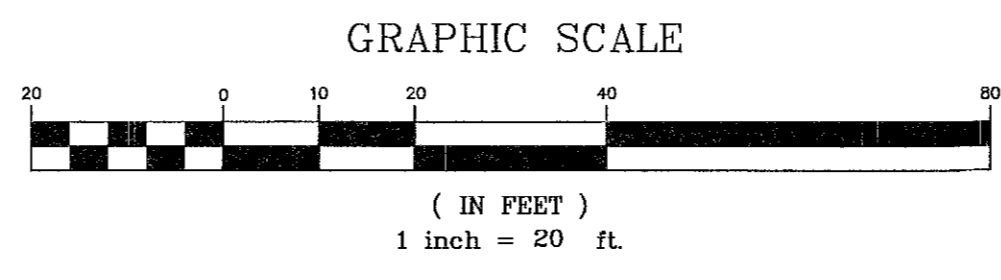


- LEGEND**
- UTILITY POLE & GUY WIRE
 - LIGHT POLE
 - GRANITE BOUND FOUND
 - IRON PIPE/ROD FOUND
 - FIRE HYDRANT
 - GAS GATE VALVE
 - WATER GATE VALVE
 - GAS SHUTOFF VALVE
 - WATER SHUTOFF VALVE
 - CONDUIT
 - VENT PIPE
 - CLEANOUT
 - CROSSWALK TRACTION MAT
 - ELECTRIC BOX
 - UTILITY BOX
 - CATCH BASIN (ROUND)
 - CATCH BASIN
 - DRAIN MANHOLE
 - SEWER MANHOLE
 - JURISDICTIONAL WETLAND SYMBOL
 - TREE STUMP
 - CONIFEROUS TREE
 - DECIDUOUS TREE
 - CONCRETE
 - RIP RAP
 - BOLLARD
 - DRAINAGE FLOW DIRECTION ARROW
 - TYP.
 - EM
 - GM
 - EP
 - CONC.
 - VOC
 - SOC
 - SBB
 - FES
 - BEARING
 - DIST
 - BEARING
 - DIST
 - STOCKADE FENCE
 - OVERHEAD WIRES
 - SEWER LINE
 - DRAIN LINE
 - GAS LINE (PER MARKINGS)
 - APPROX. ABUTTERS LOT LINE
 - EASEMENT LINE
 - TREE LINE
 - GUARDRAIL
 - EDGE OF JURISDICTIONAL WETLAND (SEE NOTE #5)
 - SEWER LINE (PER CONTRACTORS AS-BUILT)
 - DRAIN LINE (PER CONTRACTORS AS-BUILT)
 - GAS LINE (PER CONTRACTORS AS-BUILT)
 - WATER LINE (PER CONTRACTORS AS-BUILT)
 - UNDERGROUND ELECTRIC LINE (PER CONTRACTORS AS-BUILT)
 - UNIT NUMBER (PER REF. PLAN #1)

I certify that this survey plot is not a subdivision pursuant to this title (NHRSA Title LXIV) and that the lines of streets and ways shown are those of public or private streets or ways already established and that no new ways are shown.

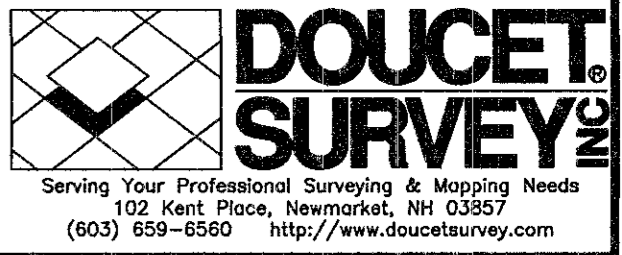
I certify that this survey and plan were prepared by me or by those under my direct supervision and falls under the Urban Survey Classification of the NH Code of Administrative Rules of the Board of Licensure for Land Surveyors. I certify that this survey was made on the ground and is correct to the best of my knowledge and belief. Random traverse survey by Total Station, with a precision greater than 1:15,000.

William J. Doucet L.L.S. #824
8-10-12 DATE



AS-BUILT PLAN
OF
"THE COTTAGES OF DURHAM"
FOR
CAPSTONE COMPANIES
(TAX MAP 9, LOT 10-3)
TECHNOLOGY DRIVE
DURHAM, NEW HAMPSHIRE

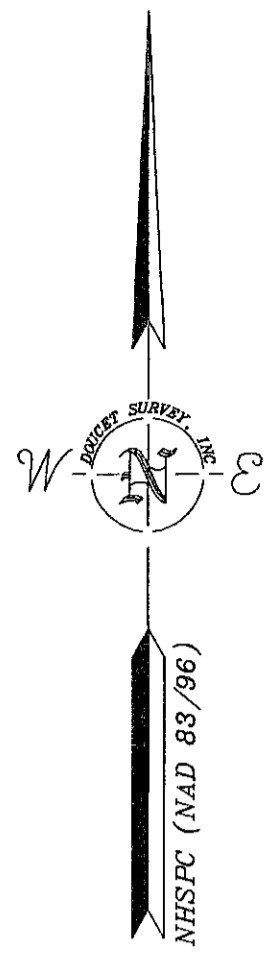
DRAWN BY: M.W.F.	DATE: AUGUST 1, 2012
CHECKED BY: W.J.D.	DRAWING NO.: 2957F
JOB NO.: 2957	SHEET 5 OF 18



NO.	DATE	DESCRIPTION	BY

NOTE:
ALL ELECTRIC, GAS, TEL, WATER, SEWER AND DRAIN SERVICES ARE SHOWN IN SCHEMATIC FASHION. THEIR LOCATIONS ARE NOT PRECISE OR NECESSARILY ACCURATE. NO WORK WHATSOEVER SHALL BE UNDERTAKEN ON THIS SITE USING THIS PLAN TO LOCATE THE ABOVE SERVICES. CONSULT WITH THE PROPER AUTHORITIES CONCERNED WITH THE SUBJECT SERVICE LOCATIONS FOR INFORMATION REGARDING SUCH. CALL DIG-SAFE AT 1-888-DIG-SAFE.

The certifications shown hereon are intended to meet registry of deed requirements and are not a certification to title or ownership of property shown. Owners of adjoining properties are according to current town assessors records.



- LEGEND**
- UTILITY POLE & GUY WIRE
 - LIGHT POLE
 - GRANITE BOUND FOUND
 - IRON PIPE/ROD FOUND
 - FIRE HYDRANT
 - GAS GATE VALVE
 - WATER GATE VALVE
 - GAS SHUTOFF VALVE
 - WATER SHUTOFF VALVE
 - CONDUIT
 - VENT PIPE
 - CLEANOUT
 - CROSSWALK TRACTION MAT
 - ELECTRIC BOX
 - UTILITY BOX
 - CATCH BASIN (ROUND)
 - CATCH BASIN
 - DRAIN MANHOLE
 - SEWER MANHOLE
 - JURISDICTIONAL WETLAND SYMBOL
 - TREE STUMP
 - CONIFEROUS TREE
 - DECIDUOUS TREE
 - CONCRETE
 - RIP RAP
 - BOLLARD
 - DRAINAGE FLOW DIRECTION ARROW
 - TYPICAL
 - ELECTRIC METER
 - GAS METER
 - EDGE OF PAVEMENT
 - CONCRETE
 - VERTICAL GRANITE CURB
 - SLOPED GRANITE CURB
 - SLOPED BITUMINOUS BERM
 - FLARED END SECTION
 - BEARING
 - PROPERTY LINES
 - DIST
 - BEARING
 - DIST
 - CONSERVATION EASEMENT LINE
 - STOCKADE FENCE
 - OVERHEAD WIRES
 - SEWER LINE
 - DRAIN LINE
 - GAS LINE (PER MARKINGS)
 - APPROX. ABUTTERS LOT LINE
 - EASEMENT LINE
 - TREE LINE
 - GUARDRAIL
 - EDGE OF JURISDICTIONAL WETLAND (SEE NOTE #5)
 - SEWER LINE (PER CONTRACTORS AS-BUILT)
 - DRAIN LINE (PER CONTRACTORS AS-BUILT)
 - GAS LINE (PER CONTRACTORS AS-BUILT)
 - WATER LINE (PER CONTRACTORS AS-BUILT)
 - UNDERGROUND ELECTRIC LINE (PER CONTRACTORS AS-BUILT)
 - UNIT NUMBER (PER REF. PLAN #1)

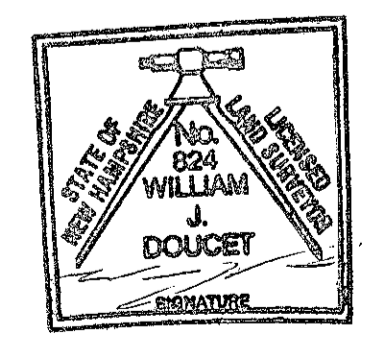
LEE DURHAM TOWN LINE

OYSTER RIVER

THE RIVER OPEN SPACE PROTECTION AREA
684,600 sq. ft. ±
15.7 acres ±
AREA CALCULATED TO CENTERLINE OF RIVER

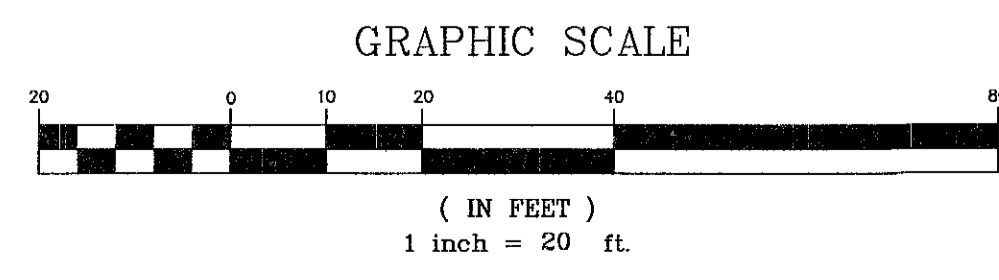
I certify that this survey plot is not a subdivision pursuant to this title (NHRSA Title LXIV) and that the lines of streets and ways shown are those of public or private streets or ways already established and that no new ways are shown.

I certify that this survey and plan were prepared by me or by those under my direct supervision and falls under the Urban Survey Classification of the NH Code of Administrative Rules of the Board of Licensure for Land Surveyors. I certify that this survey was made on the ground and is correct to the best of my knowledge and belief. Random traverse survey by Total Station, with a precision greater than 1:15,000.



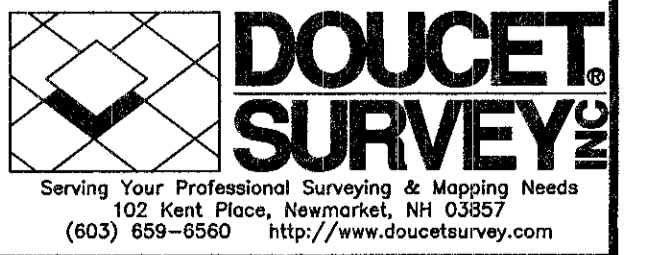
William J. Doucet L.L.S. #824
3-10-12 DATE

The certifications shown herein are intended to meet registry of deed requirements and are not a certification to title or ownership of property shown. Owners of adjoining properties are according to current town assessors records.



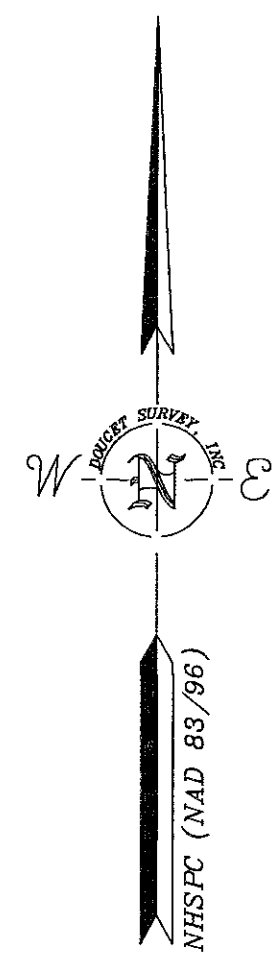
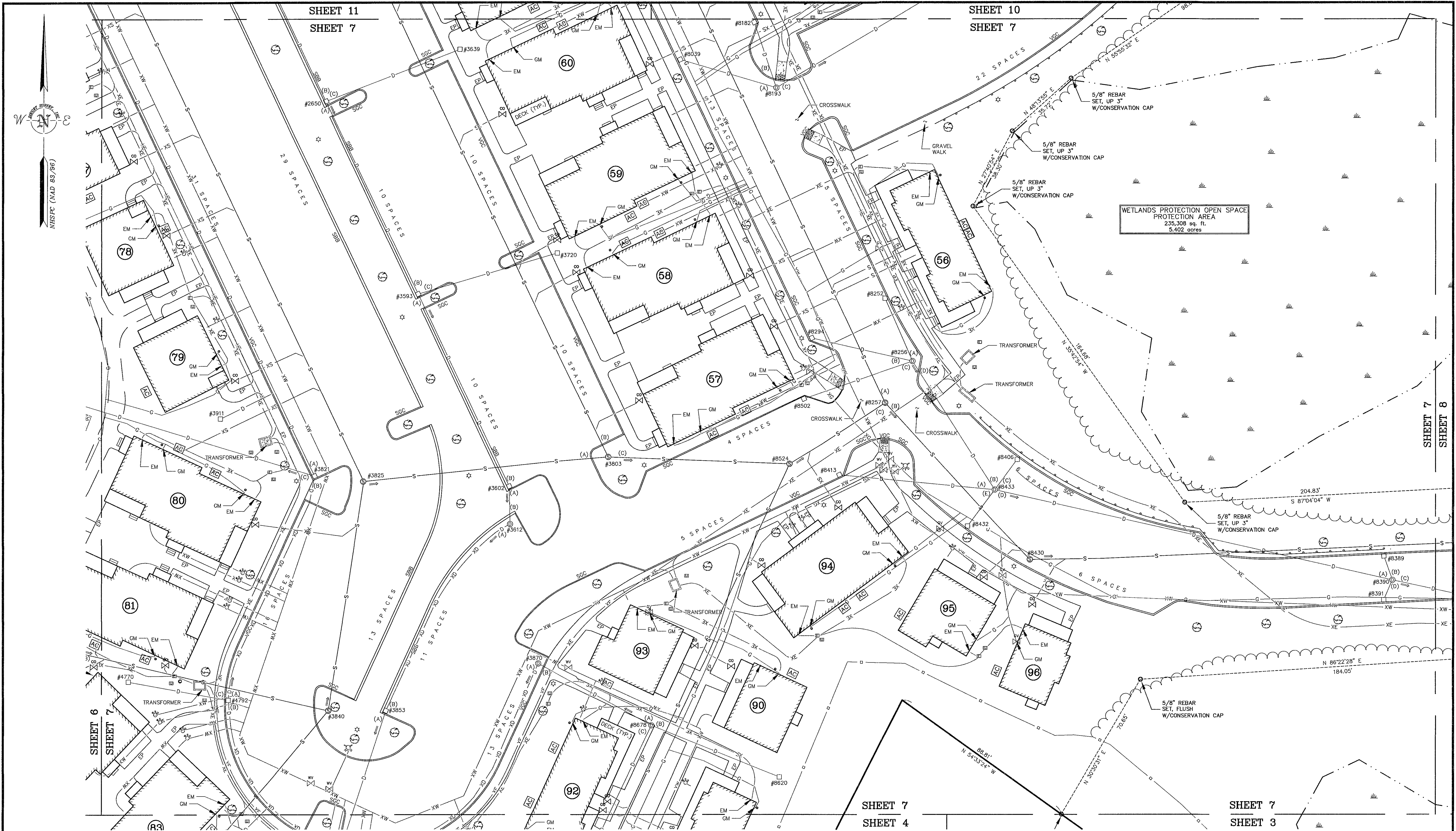
AS-BUILT PLAN
OF
"THE COTTAGES OF DURHAM"
FOR
CAPSTONE COMPANIES
(TAX MAP 9, LOT 10-3)
TECHNOLOGY DRIVE
DURHAM, NEW HAMPSHIRE

DRAWN BY: M.W.F.	DATE: AUGUST 1, 2012
CHECKED BY: W.J.D.	DRAWING NO.: 2957F
JOB NO.: 2957	SHEET 6 OF 18



NO.	DATE	DESCRIPTION	BY

NOTE:
ALL ELECTRIC, GAS, TEL, WATER, SEWER AND DRAIN SERVICES ARE SHOWN IN SCHEMATIC FASHION, THEIR LOCATIONS ARE NOT PRECISE OR NECESSARILY ACCURATE. NO WORK WHATSOEVER SHALL BE UNDERTAKEN ON THIS SITE USING THIS PLAN TO LOCATE THE ABOVE SERVICES. CONSULT WITH THE PROPERTY AUTHORITIES CONCERNED WITH THE SUBJECT SERVICE LOCATIONS FOR INFORMATION REGARDING SUCH. CALL DIG-SAFE AT 1-888-DIG-SAFE.



SHEET 11
SHEET 7

SHEET 10
SHEET 7

SHEET 7
SHEET 8

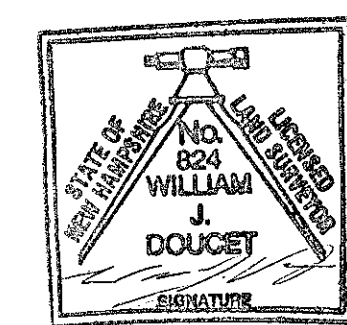
SHEET 7
SHEET 4

SHEET 7
SHEET 3

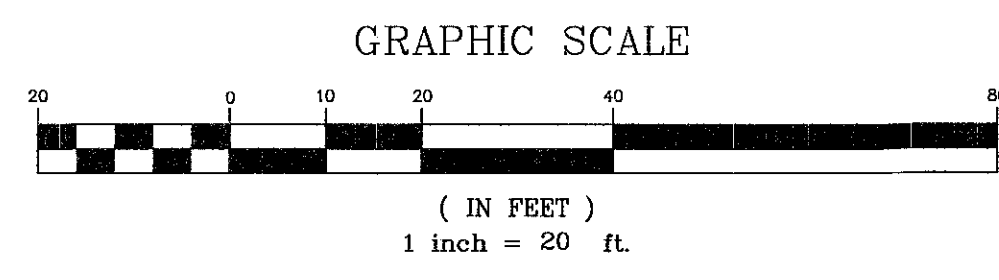
WETLANDS PROTECTION OPEN SPACE
PROTECTION AREA
235,308 sq. ft.
5.402 acres

I certify that this survey plat is not a subdivision pursuant to this title (NHRSA Title LXIV) and that the lines of streets and ways shown are those of public or private streets or ways already established and that no new ways are shown.

I certify that this survey and plan were prepared by me or by those under my direct supervision and falls under the Urban Survey Classification of the NH Code of Administrative Rules of the Board of Licensure for Land Surveyors. I certify that this survey was made on the ground and is correct to the best of my knowledge and belief. Random traverse survey by Total Station, with a precision greater than 1:15,000.

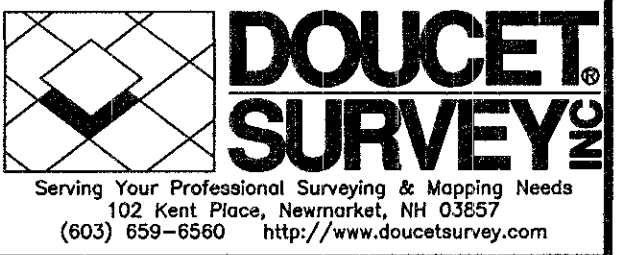


L.L.S. #824
DATE



AS-BUILT PLAN
OF
"THE COTTAGES OF DURHAM"
FOR
CAPSTONE COMPANIES
(TAX MAP 9, LOT 10-3)
TECHNOLOGY DRIVE
DURHAM, NEW HAMPSHIRE

DRAWN BY:	M.W.F.	DATE:	AUGUST 1, 2012
CHECKED BY:	W.J.D.	DRAWING NO.:	2957F
JOB NO.:	2957	SHEET	7 OF 18



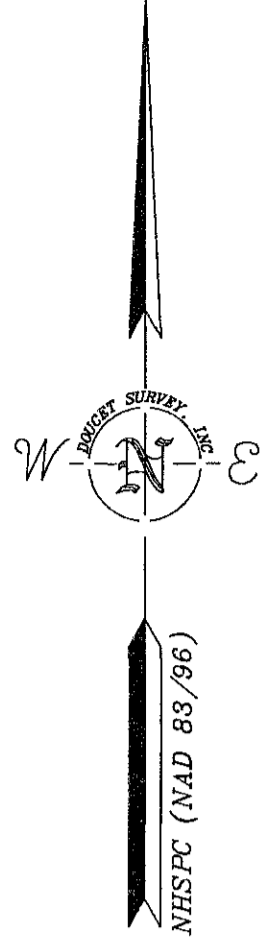
NO.	DATE	DESCRIPTION	BY

NOTE:
ALL ELECTRIC, GAS, TEL, WATER, SEWER AND DRAIN SERVICES ARE SHOWN IN SCHEMATIC FASHION, THEIR LOCATIONS ARE NOT PRECISE OR NECESSARILY ACCURATE. NO WORK WHATSOEVER SHALL BE UNDERTAKEN ON THIS SITE USING THIS PLAN TO LOCATE THE ABOVE SERVICES. CONSULT WITH THE PROPER AUTHORITIES CONCERNED WITH THE SUBJECT SERVICE LOCATIONS FOR INFORMATION REGARDING SUCH. CALL DIG-SAFE AT 1-888-DIG-SAFE.

The certifications shown hereon are intended to meet registry of deed requirements and are not a certification to title or ownership of property shown. Owners of adjoining properties are according to current town assessors records.

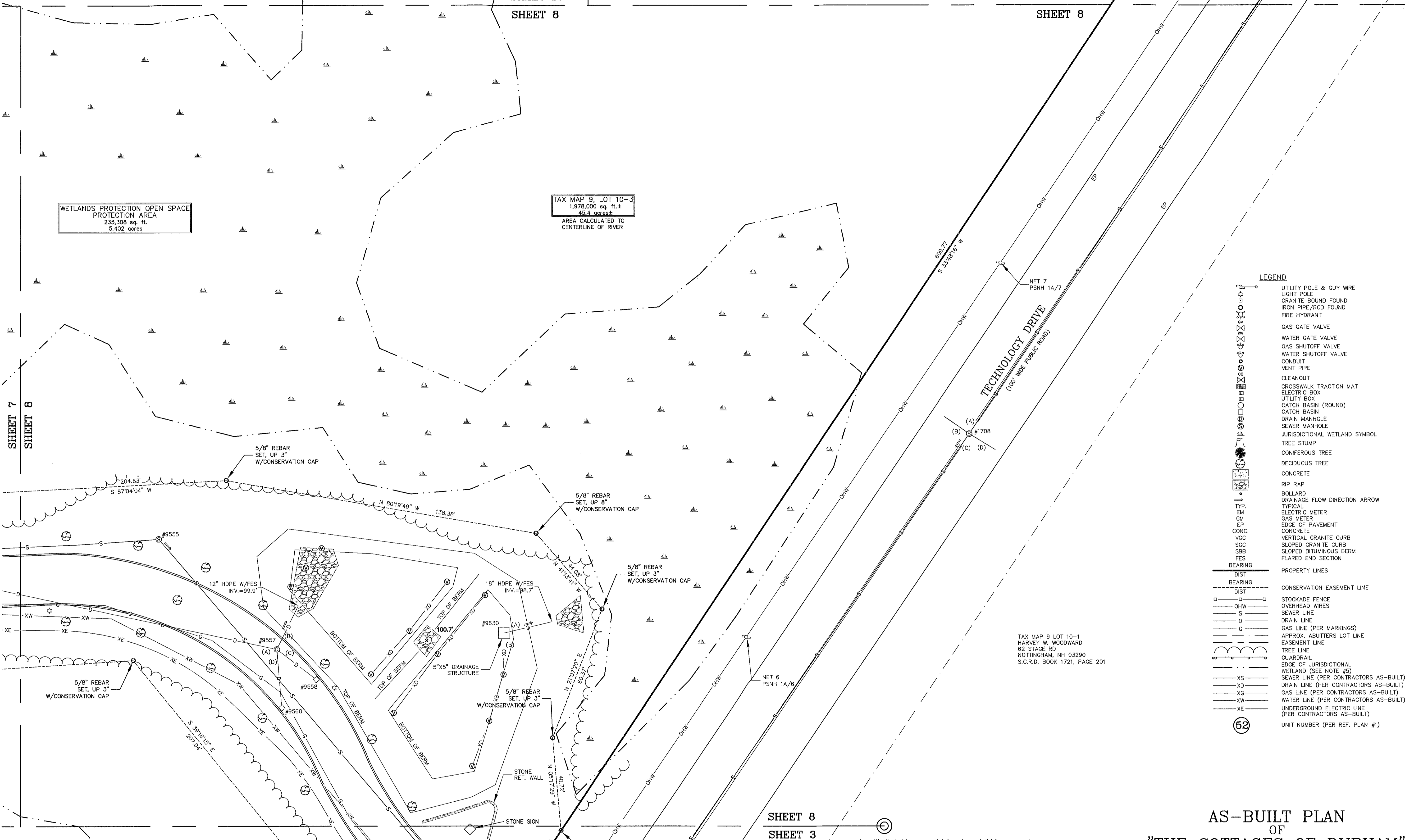
SHEET 10
SHEET 8

SHEET 9
SHEET 8



WETLANDS PROTECTION OPEN SPACE
PROTECTION AREA
235,308 sq. ft.
5.402 acres

TAX MAP 9, LOT 10-3
1,978,000 sq. ft. ±
45.4 acres ±
AREA CALCULATED TO
CENTERLINE OF RIVER



- LEGEND**
- UTILITY POLE & GUY WIRE
 - LIGHT POLE
 - GRANITE BOUND FOUND
 - IRON PIPE/ROD FOUND
 - FIRE HYDRANT
 - GAS GATE VALVE
 - WATER GATE VALVE
 - GAS SHUTOFF VALVE
 - WATER SHUTOFF VALVE
 - CONDUIT
 - VENT PIPE
 - CLEANOUT
 - CROSSWALK TRACTION MAT
 - ELECTRIC BOX
 - UTILITY BOX
 - CATCH BASIN (ROUND)
 - CATCH BASIN
 - DRAIN MANHOLE
 - SEWER MANHOLE
 - JURISDICTIONAL WETLAND SYMBOL
 - TREE STUMP
 - CONIFEROUS TREE
 - DECIDUOUS TREE
 - CONCRETE
 - RIP RAP
 - BOLLARD
 - DRAINAGE FLOW DIRECTION ARROW
 - TYP. EM
 - GM
 - EP
 - CONC.
 - VGC
 - SGC
 - SBB
 - FES
 - BEARING
 - DIST
 - BEARING
 - DIST
 - STOCKADE FENCE
 - OVERHEAD WIRES
 - SEWER LINE
 - DRAIN LINE
 - GAS LINE (PER MARKINGS)
 - APPROX. ABUTTERS LOT LINE
 - EASEMENT LINE
 - TREE LINE
 - GUARDRAIL
 - EDGE OF JURISDICTIONAL WETLAND (SEE NOTE #5)
 - SEWER LINE (PER CONTRACTORS AS-BUILT)
 - DRAIN LINE (PER CONTRACTORS AS-BUILT)
 - GAS LINE (PER CONTRACTORS AS-BUILT)
 - WATER LINE (PER CONTRACTORS AS-BUILT)
 - UNDERGROUND ELECTRIC LINE (PER CONTRACTORS AS-BUILT)
 - UNIT NUMBER (PER REF. PLAN #1)

TAX MAP 9 LOT 10-1
HARVEY W. WOODWARD
62 STAGE RD
NOTTINGHAM, NH 03290
S.C.R.D. BOOK 1721, PAGE 201

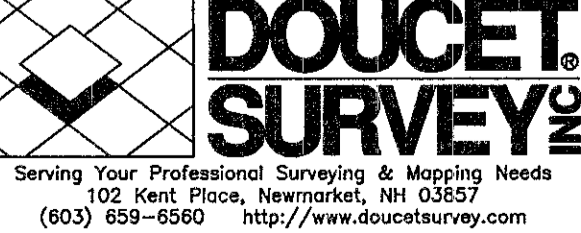
SHEET 8
SHEET 3

I certify that this survey plot is not a subdivision pursuant to this title (NH RSA Title LXIV) and that the lines of streets and ways shown are those of public or private streets or ways already established and that no new ways are shown.
I certify that this survey and plan were prepared by me or by those under my direct supervision and falls under the Urban Survey Classification of the NH Code of Administrative Rules of the Board of Licensure for Land Surveyors. I certify that this survey was made on the ground and is correct to the best of my knowledge and belief. Random traverse survey by Total Station, with a precision greater than 1:15,000.

W.J.D. L.L.S. #824
8-10-12 DATE

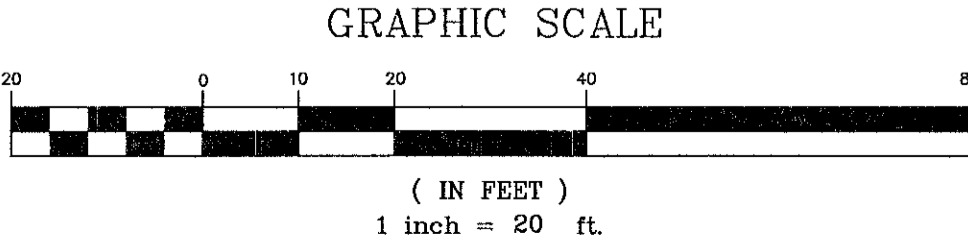
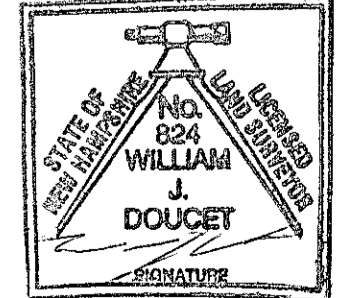
The certifications shown hereon are intended to meet registry of deed requirements and are not a certification to title or ownership of property shown. Owners of adjoining properties are according to current town assessors records.

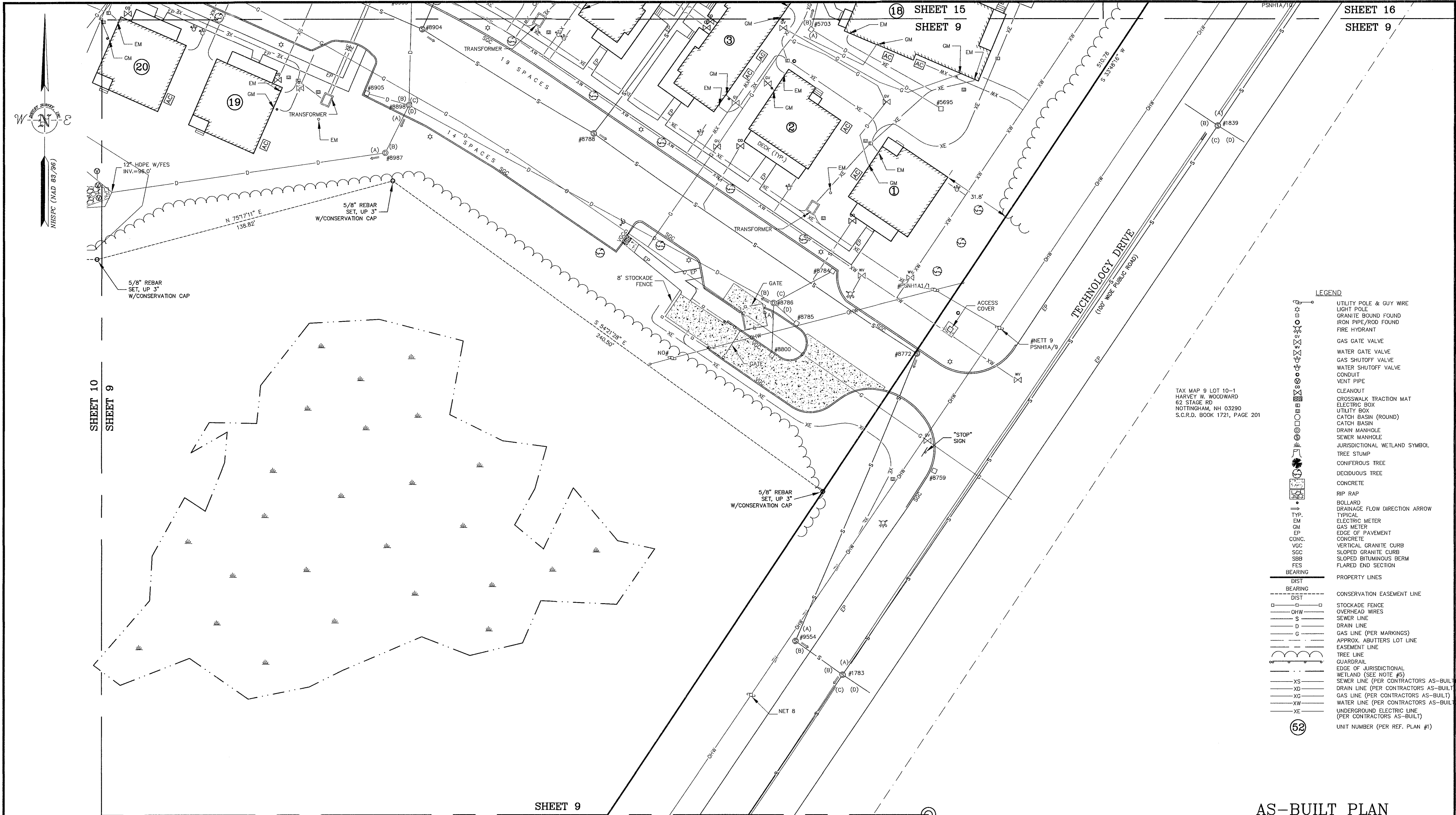
DRAWN BY:	M.W.F.	DATE:	AUGUST 1, 2012
CHECKED BY:	W.J.D.	DRAWING NO.:	2957F
JOB NO.:	2957	SHEET	8 OF 18



NO.	DATE	DESCRIPTION	BY

NOTE:
ALL ELECTRIC, GAS, TEL, WATER, SEWER AND DRAIN SERVICES ARE SHOWN IN SCHEMATIC FASHION, THEIR LOCATIONS ARE NOT PRECISE OR NECESSARILY ACCURATE. NO WORK WHATSOEVER SHALL BE UNDERTAKEN ON THIS SITE USING THIS PLAN TO LOCATE THE ABOVE SERVICES. CONSULT WITH THE PROPER AUTHORITIES CONCERNED WITH THE SUBJECT SERVICE LOCATIONS FOR INFORMATION REGARDING SUCH. CALL DIG-SAFE AT 1-888-DIG-SAFE.





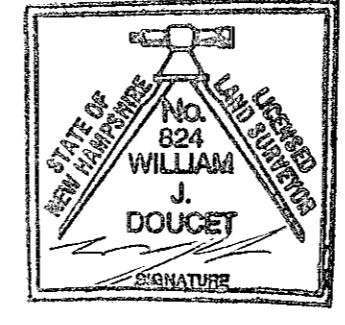
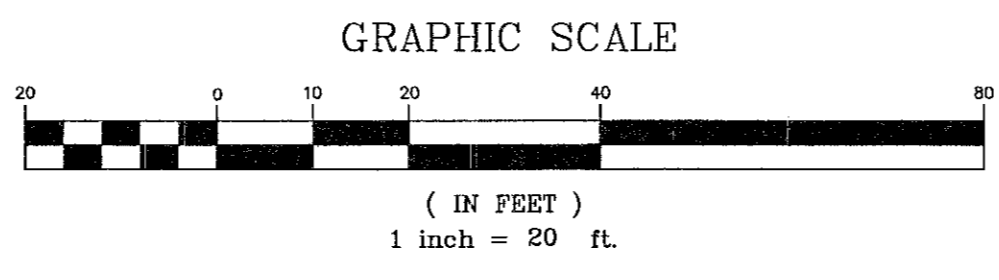
- LEGEND**
- UTILITY POLE & GUY WIRE
 - LIGHT POLE
 - GRANITE BOUND FOUND
 - IRON PIPE/ROD FOUND
 - FIRE HYDRANT
 - GAS GATE VALVE
 - WATER GATE VALVE
 - GAS SHUTOFF VALVE
 - WATER SHUTOFF VALVE
 - CONDUIT
 - VENT PIPE
 - CLEANOUT
 - CROSSWALK TRACTION MAT
 - ELECTRIC BOX
 - UTILITY BOX
 - CATCH BASIN (ROUND)
 - CATCH BASIN
 - DRAIN MANHOLE
 - SEWER MANHOLE
 - JURISDICTIONAL WETLAND SYMBOL
 - TREE STUMP
 - CONIFEROUS TREE
 - DECIDUOUS TREE
 - CONCRETE
 - RIP RAP
 - BOLLARD
 - DRAINAGE FLOW DIRECTION ARROW
 - TYP.
 - EM
 - GM
 - EP
 - CONC.
 - VGC
 - SGC
 - SBB
 - FES
 - BEARING
 - DIST
 - BEARING
 - DIST
 - OHW
 - S
 - D
 - G
 - APPROX. ABUTTERS LOT LINE
 - EASEMENT LINE
 - TREE LINE
 - GUARDRAIL
 - EDGE OF JURISDICTIONAL WETLAND (SEE NOTE #5)
 - SEWER LINE (PER CONTRACTORS AS-BUILT)
 - DRAIN LINE (PER CONTRACTORS AS-BUILT)
 - GAS LINE (PER CONTRACTORS AS-BUILT)
 - WATER LINE (PER CONTRACTORS AS-BUILT)
 - UNDERGROUND ELECTRIC LINE (PER CONTRACTORS AS-BUILT)
 - UNIT NUMBER (PER REF. PLAN #)

TAX MAP 9 LOT 10-1
 HARVEY W. WOODWARD
 62 STAGE RD
 NOTTINGHAM, NH 03290
 S.C.R.D. BOOK 1721, PAGE 201

SHEET 9
 SHEET 8

I certify that this survey plat is not a subdivision pursuant to this title (N.H.R.S.A. Title LXIV) and that the lines of streets and ways shown are those of public or private streets or ways already established and that no new ways are shown.

I certify that this survey and plan were prepared by me or by those under my direct supervision and falls under the Urban Survey Classification of the NH Code of Administrative Rules of the Board of Licensure for Land Surveyors. I certify that this survey was made on the ground and is correct to the best of my knowledge and belief. Random traverse survey by Total Station, with a precision greater than 1:15,000.



W.J.D. L.L.S. #824
 9-10-12 DATE

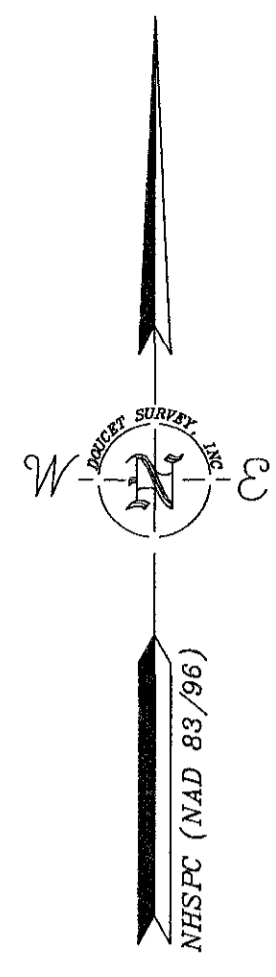
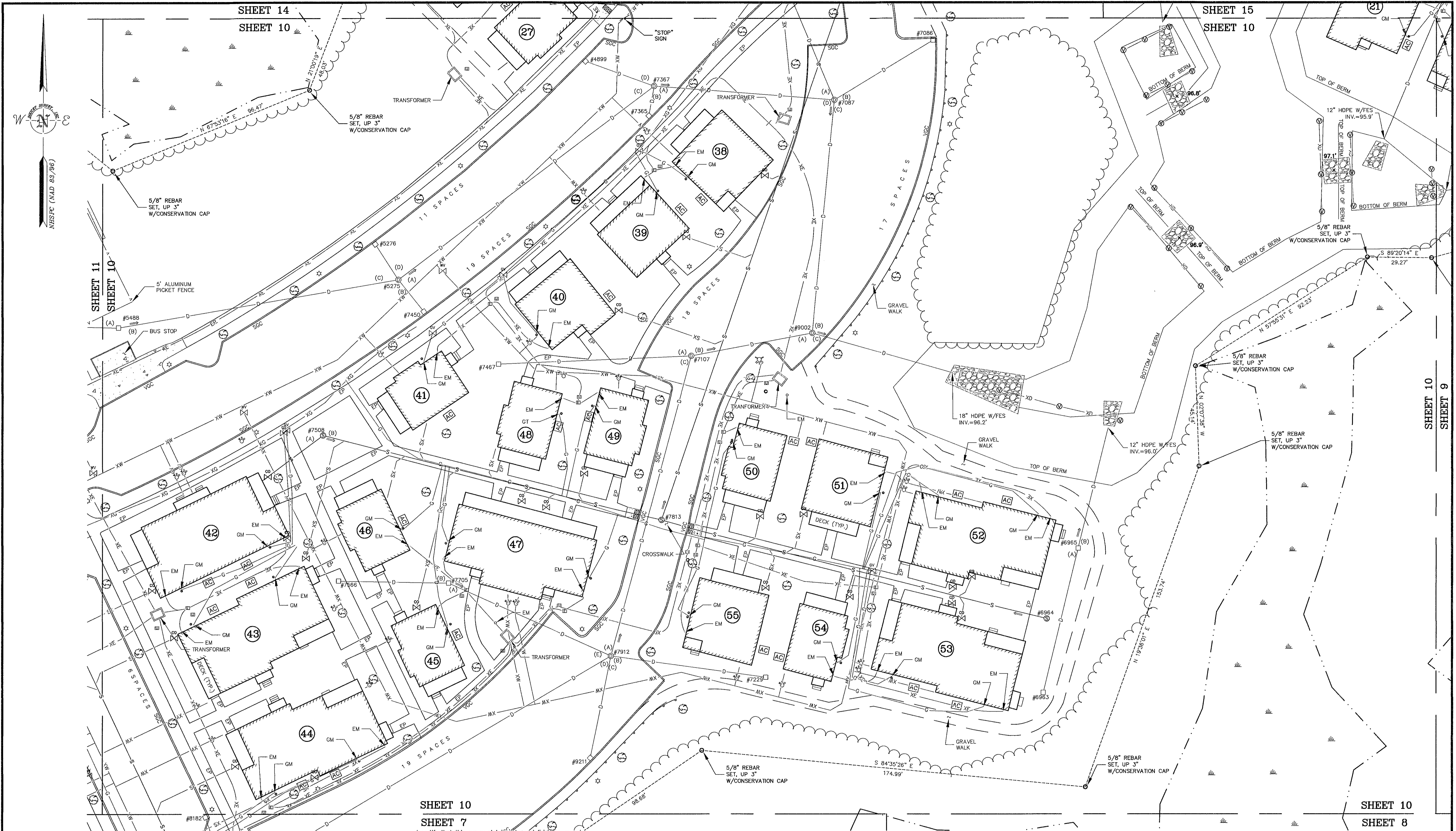
The certifications shown hereon are intended to meet registry of deed requirements and are not a certification to title or ownership of property shown. Owners of adjoining properties are advised to consult town assessors records.

DRAWN BY:	M.W.F.	DATE:	AUGUST 1, 2012
CHECKED BY:	W.J.D.	DRAWING NO.:	2957F
JOB NO.:	2957	SHEET	9 OF 18

DOUCET SURVEYING
 Serving Your Professional Surveying & Mapping Needs
 102 Kent Place, Newmarket, NH 03857
 (603) 559-6560 <http://www.doucetsurveying.com>

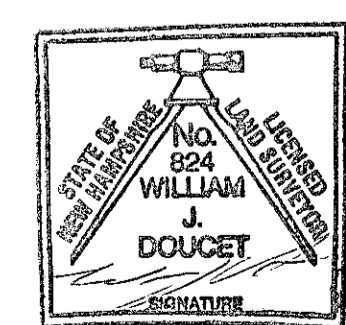
NO.	DATE	DESCRIPTION	BY

NOTE:
 ALL ELECTRIC, GAS, TEL, WATER, SEWER AND DRAIN SERVICES ARE SHOWN IN SCHEMATIC FASHION, THEIR LOCATIONS ARE NOT PRECISE OR NECESSARILY ACCURATE. NO WORK WHATSOEVER SHALL BE UNDERTAKEN ON THIS SITE USING THIS PLAN TO LOCATE THE ABOVE SERVICES. CONSULT WITH THE PROPER AUTHORITIES CONCERNED WITH THE SUBJECT SERVICE LOCATIONS FOR INFORMATION REGARDING SUCH. CALL DIG-SAFE AT 1-888-DIG-SAFE.



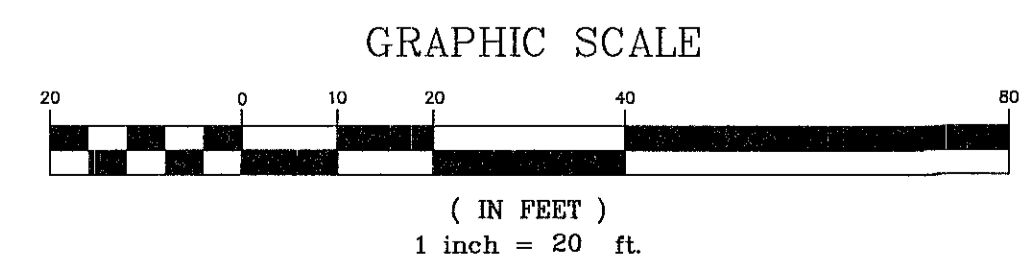
SHEET 10
SHEET 7

I certify that this survey plot is not a subdivision pursuant to this title (NH RSA Title LXIV) and that the lines of streets and ways shown are those of public or private streets or ways already established and that no new ways are shown. I certify that this survey and plan were prepared by me or by those under my direct supervision and falls under the Urban Survey Classification of the NH Code of Administrative Rules of the Board of Licensure for Land Surveyors. I certify that this survey was made on the ground and is correct to the best of my knowledge and belief. Random traverse survey by Total Station, with a precision greater than 1:15,000.



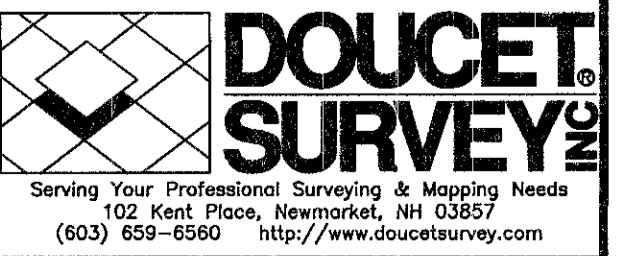
WILLIAM J. DOUCET
L.L.S. #824
DATE: 8-10-12

The certifications shown herein are intended to meet registry of deed requirements and are not a certification to title or ownership of property shown. Owners of adjoining properties are according to current town assessors records.



AS-BUILT PLAN
OF
"THE COTTAGES OF DURHAM"
FOR
CAPSTONE COMPANIES
(TAX MAP 9, LOT 10-3)
TECHNOLOGY DRIVE
DURHAM, NEW HAMPSHIRE

DRAWN BY: M.W.F.	DATE: AUGUST 1, 2012
CHECKED BY: W.J.D.	DRAWING NO.: 2957F
JOB NO.: 2957	SHEET 10 OF 18



NO.	DATE	DESCRIPTION	BY

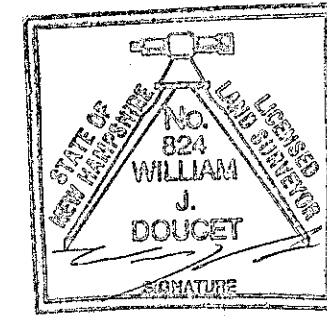
NOTE:
ALL ELECTRIC, GAS, TEL, WATER, SEWER AND DRAIN SERVICES ARE SHOWN IN SCHEMATIC FASHION, THEIR LOCATIONS ARE NOT PRECISE OR NECESSARILY ACCURATE. NO WORK WHATSOEVER SHALL BE UNDERTAKEN ON THIS SITE USING THIS PLAN TO LOCATE THE ABOVE SERVICES. CONSULT WITH THE PROPER AUTHORITIES CONCERNED WITH THE SUBJECT SERVICE LOCATIONS FOR INFORMATION REGARDING SUCH. CALL DIG-SAFE AT 1-888-DIG-SAFE.

I certify that this survey plot is not a subdivision pursuant to this title (NH RSA Title LXIV) and that the lines of streets and ways shown are those of public or private streets or ways already established and that no new ways are shown.
I certify that this survey and plan were prepared by me or by those under my direct supervision and falls under the Urban Survey Classification of the NH Code of Administrative Rules of the Board of Licensure for Land Surveyors. I certify that this survey was made on the ground and is correct to the best of my knowledge and belief. Random traverse survey by Total Station, with a precision greater than 1:15,000.

L.L.S. #824

8-12-12 DATE

The certifications shown hereon are intended to meet registry of deed requirements and are not a certification to title or ownership of property shown. Owners of adjoining properties are according to current town assessors records.

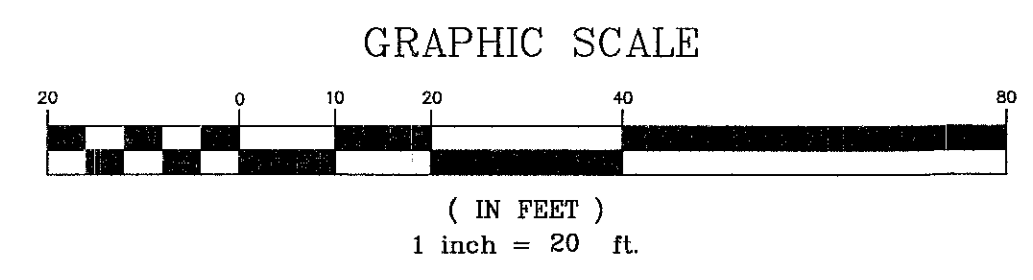
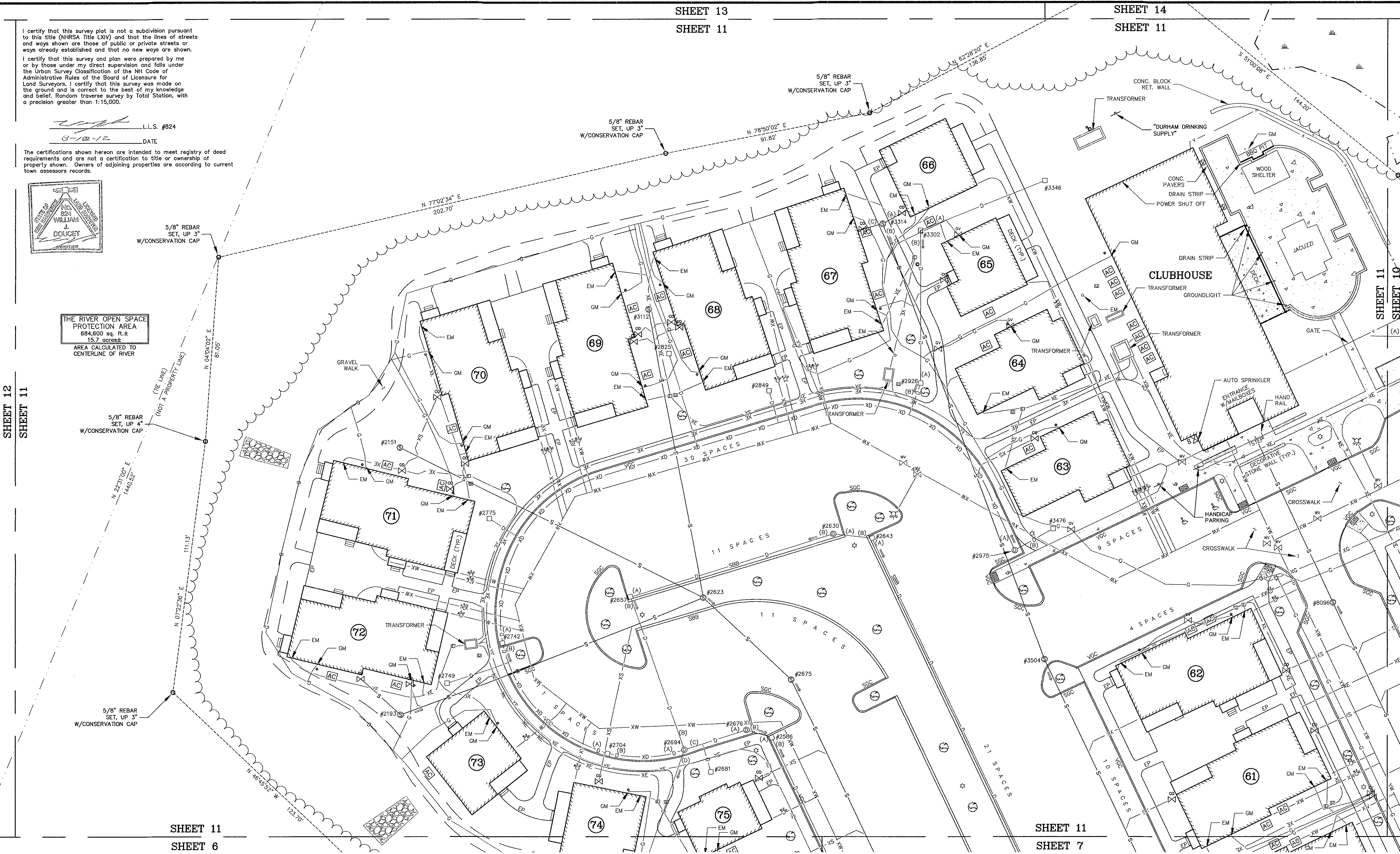


THE RIVER OPEN SPACE PROTECTION AREA
684,600 sq. ft. ±
15.7 acres ±
AREA CALCULATED TO CENTERLINE OF RIVER

SHEET 12
SHEET 11

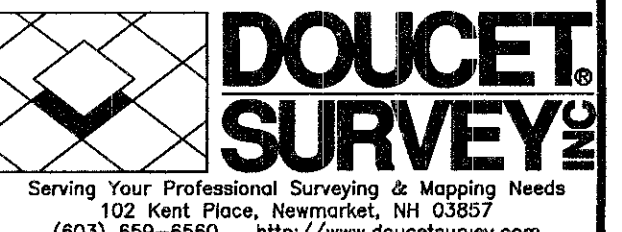
SHEET 11
SHEET 6

SHEET 11
SHEET 7



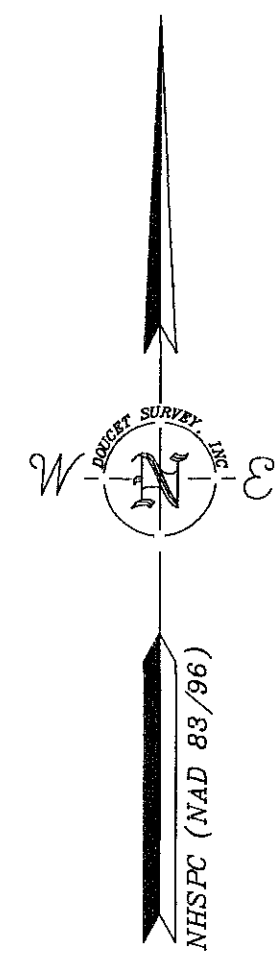
AS-BUILT PLAN
OF
"THE COTTAGES OF DURHAM"
FOR
CAPSTONE COMPANIES
(TAX MAP 9, LOT 10-3)
TECHNOLOGY DRIVE
DURHAM, NEW HAMPSHIRE

DRAWN BY:	M.W.F.	DATE:	AUGUST 1, 2012
CHECKED BY:	W.J.D.	DRAWING NO.:	2957F
JOB NO.:	2957	SHEET 11 OF 18	



NOTE:
ALL ELECTRIC, GAS, TEL, WATER, SEWER AND DRAIN SERVICES ARE SHOWN IN SCHEMATIC FASHION. THEIR LOCATIONS ARE NOT PRECISE OR NECESSARILY ACCURATE. NO WORK WHATSOEVER SHALL BE UNDERTAKEN ON THIS SITE USING THIS PLAN TO LOCATE THE ABOVE SERVICES. CONSULT WITH THE PROPER AUTHORITIES CONCERNED WITH THE SUBJECT SERVICE LOCATIONS FOR INFORMATION REGARDING SUCH. CALL DIG-SAFE AT 1-888-DIG-SAFE.

NO.	DATE	DESCRIPTION	BY



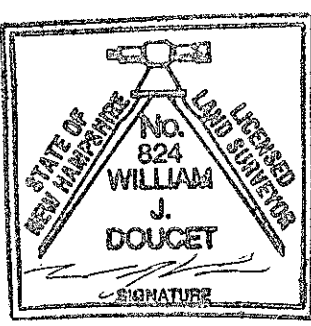
- LEGEND**
- UTILITY POLE & GUY WIRE
 - LIGHT POLE
 - GRANITE BOUND FOUND
 - IRON PIPE/ROD FOUND
 - FIRE HYDRANT
 - GAS GATE VALVE
 - WATER GATE VALVE
 - GAS SHUTOFF VALVE
 - WATER SHUTOFF VALVE
 - CONDUIT
 - VENT PIPE
 - CLEANOUT
 - CROSSWALK TRACTION MAT
 - ELECTRIC BOX
 - UTILITY BOX
 - CATCH BASIN (ROUND)
 - CATCH BASIN
 - DRAIN MANHOLE
 - SEWER MANHOLE
 - JURISDICTIONAL WETLAND SYMBOL
 - TREE STUMP
 - CONIFEROUS TREE
 - DECIDUOUS TREE
 - CONCRETE
 - RIP RAP
 - BOLLARD
 - DRAINAGE FLOW DIRECTION ARROW
 - TYP. TYPICAL
 - EM ELECTRIC METER
 - GM GAS METER
 - EP EDGE OF PAVEMENT
 - CONC. CONCRETE
 - VGC VERTICAL GRANITE CURB
 - SGC SLOPED GRANITE CURB
 - SBB SLOPED BITUMINOUS BERM
 - FES FLARED END SECTION
 - BEARING
 - DIST DISTANCE
 - BEARING DISTANCE
 - DIST DISTANCE
 - STOCKADE FENCE
 - OVERHEAD WIRES
 - SEWER LINE
 - DRAIN LINE
 - GAS LINE (PER MARKINGS)
 - APPROX. ABUTTERS LOT LINE
 - EASEMENT LINE
 - TREE LINE
 - GUARDRAIL
 - EDGE OF JURISDICTIONAL WETLAND (SEE NOTE #5)
 - SEWER LINE (PER CONTRACTORS AS-BUILT)
 - DRAIN LINE (PER CONTRACTORS AS-BUILT)
 - GAS LINE (PER CONTRACTORS AS-BUILT)
 - WATER LINE (PER CONTRACTORS AS-BUILT)
 - UNDERGROUND ELECTRIC LINE (PER CONTRACTORS AS-BUILT)
 - UNIT NUMBER (PER REF. PLAN #1)



THE RIVER OPEN SPACE PROTECTION AREA
694,600 sq. ft. ±
15.7 acres ±
AREA CALCULATED TO CENTERLINE OF RIVER

SHEET 12
SHEET 11

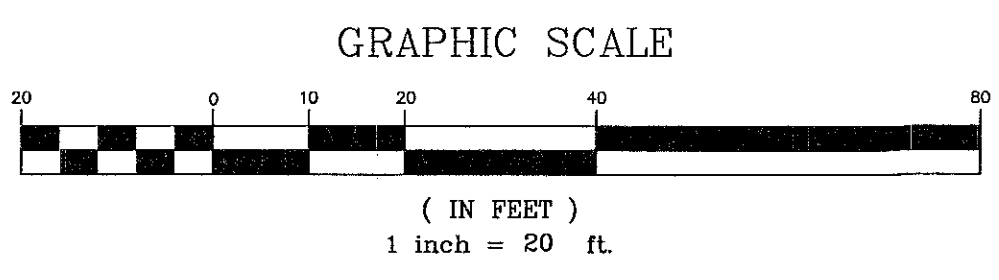
SHEET 12
SHEET 6



I certify that this survey plot is not a subdivision pursuant to this title (NHRSA Title LXIV) and that the lines of streets and ways shown are those of public or private streets or ways already established and that no new ways are shown.

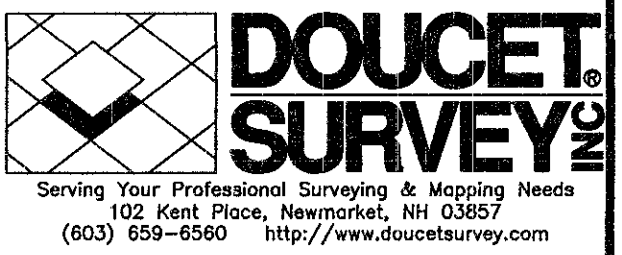
I certify that this survey and plan were prepared by me or by those under my direct supervision and falls under the Urban Survey Classification of the NH Code of Administrative Rules of the Board of Licensure for Land Surveyors. I certify that this survey was made on the ground and is correct to the best of my knowledge and belief. Random traverse survey by Total Station, with a precision greater than 1:15,000.

W. J. DOUCET L.L.S. #824
DATE 8-10-12



AS-BUILT PLAN
OF
"THE COTTAGES OF DURHAM"
FOR
CAPSTONE COMPANIES
(TAX MAP 9, LOT 10-3)
TECHNOLOGY DRIVE
DURHAM, NEW HAMPSHIRE

DRAWN BY: M.W.F.	DATE: AUGUST 1, 2012
CHECKED BY: W.J.D.	DRAWING NO.: 2957F
JOB NO.: 2957	SHEET 12 OF 18



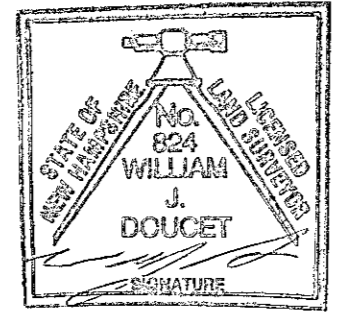
NO.	DATE	DESCRIPTION	BY

NOTE:
ALL ELECTRIC, GAS, TEL. WATER, SEWER AND DRAIN SERVICES ARE SHOWN IN SCHEMATIC FASHION, THEIR LOCATIONS ARE NOT PRECISE OR NECESSARILY ACCURATE. NO WORK WHATSOEVER SHALL BE UNDERTAKEN ON THIS SITE USING THIS PLAN TO LOCATE THE ABOVE SERVICES. CONSULT WITH THE PROPER AUTHORITIES CONCERNED WITH THE SUBJECT SERVICE LOCATIONS FOR INFORMATION REGARDING SUCH. CALL DIG-SAFE AT 1-888-DIG-SAFE.

The certifications shown hereon are intended to meet registry of deed requirements and are not a certification to title or ownership of property shown. Owners of adjoining properties are according to current town assessors records.

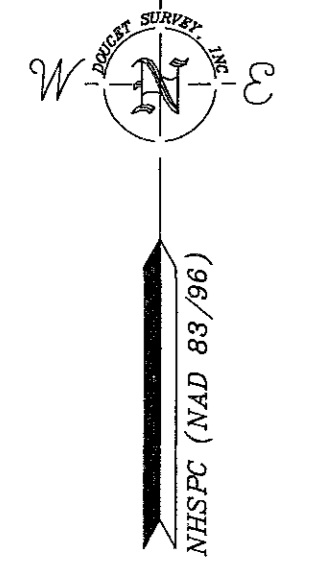
I certify that this survey plat is not a subdivision pursuant to this title (NH RSA Title LXIV) and that the lines of streets and ways shown are those of public or private streets or ways already established and that no new ways are shown.

I certify that this survey and plan were prepared by me or by those under my direct supervision and falls under the Urban Survey Classification of the NH Code of Administrative Rules of the Board of Licensure for Land Surveyors. I certify that this survey was made on the ground and is correct to the best of my knowledge and belief. Random traverse survey by Total Station, with a precision greater than 1:15,000.



William J. Doucet
L.L.S. #824
8-10-12 DATE

The certifications shown hereon are intended to meet registry of deed requirements and are not a certification to title or ownership of property shown. Owners of adjoining properties are according to current town assessors records.



LEGEND

- UTILITY POLE & GUY WIRE
- LIGHT POLE
- GRANITE BOUND FOUND
- IRON PIPE/ROD FOUND
- FIRE HYDRANT
- GAS GATE VALVE
- WATER GATE VALVE
- GAS SHUTOFF VALVE
- WATER SHUTOFF VALVE
- CONDUIT
- VENT PIPE
- CLEANOUT
- CROSSWALK TRACTION MAT
- ELECTRIC BOX
- UTILITY BOX
- CATCH BASIN (ROUND)
- CATCH BASIN
- DRAIN MANHOLE
- SEWER MANHOLE
- JURISDICTIONAL WETLAND SYMBOL
- TREE STUMP
- CONIFEROUS TREE
- DECIDUOUS TREE
- CONCRETE
- RIP RAP
- BOLLARD
- DRAINAGE FLOW DIRECTION ARROW
- TYP. EM
- CM
- EP
- CONC.
- VGC
- SGC
- SBB
- FES
- BEARING
- DIST
- BEARING
- DIST
- OHW
- S
- D
- G
- EASEMENT LINE
- TREE LINE
- GUARDRAIL
- EDGE OF JURISDICTIONAL WETLAND (SEE NOTE #5)
- SEWER LINE (PER CONTRACTORS AS-BUILT)
- DRAIN LINE (PER CONTRACTORS AS-BUILT)
- GAS LINE (PER CONTRACTORS AS-BUILT)
- WATER LINE (PER CONTRACTORS AS-BUILT)
- UNDERGROUND ELECTRIC LINE (PER CONTRACTORS AS-BUILT)
- UNIT NUMBER (PER REF. PLAN #1)

TOWN LINE
LEE DURHAM

OYSTER RIVER
2,650' ALONG RIVER

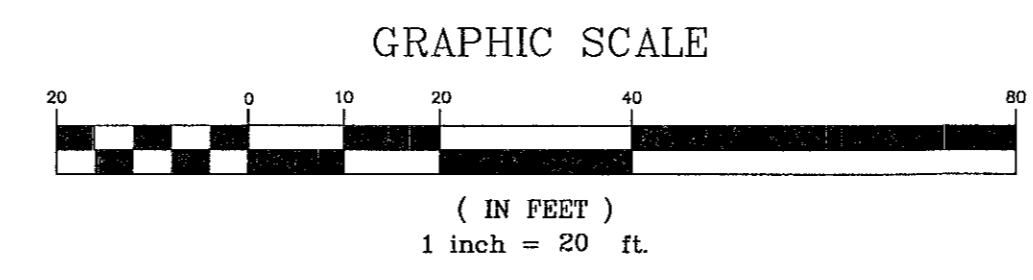
TAX MAP 6 LOT 3-0
MARY ELLEN WILSON
51 LAKE AVE
MILL NECK, NY 11765
1552/680, 2287/446

THE RIVER OPEN SPACE PROTECTION AREA
684,600 sq. ft. ±
15.7 ACRES
AREA CALCULATED TO CENTERLINE OF RIVER

SHEET 13
SHEET 12

SHEET 13
SHEET 11

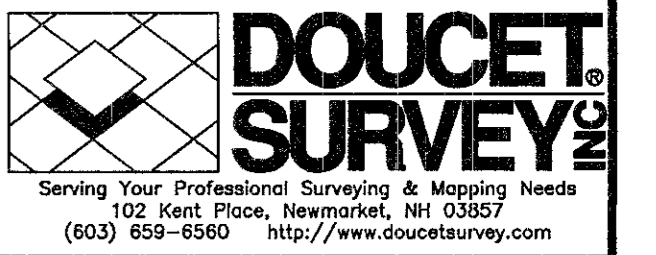
AS-BUILT PLAN
OF
"THE COTTAGES OF DURHAM"
FOR
CAPSTONE COMPANIES
(TAX MAP 9, LOT 10-3)
TECHNOLOGY DRIVE
DURHAM, NEW HAMPSHIRE



NO.	DATE	DESCRIPTION	BY

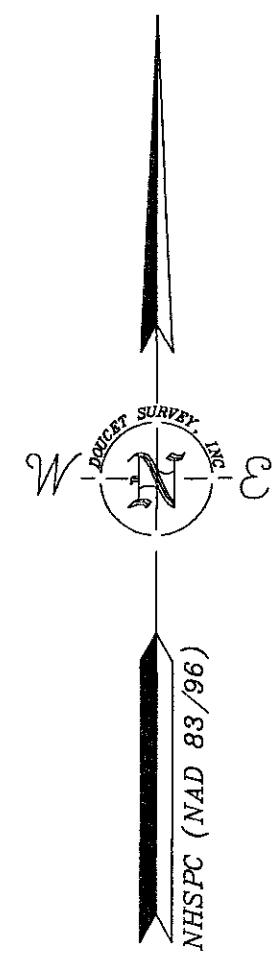
NOTE:
ALL ELECTRIC, GAS, TEL, WATER, SEWER AND DRAIN SERVICES ARE SHOWN IN SCHEMATIC FASHION. THEIR LOCATIONS ARE NOT PRECISE OR NECESSARILY ACCURATE. NO WORK WHATSOEVER SHALL BE UNDERTAKEN ON THIS SITE USING THIS PLAN TO LOCATE THE ABOVE SERVICES. CONSULT WITH THE PROPER AUTHORITIES CONCERNED WITH THE SUBJECT SERVICE LOCATIONS FOR INFORMATION REGARDING SUCH. CALL DIG-SAFE AT 1-888-DIG-SAFE.

DRAWN BY: M.W.F.	DATE: AUGUST 1, 2012
CHECKED BY: W.J.D.	DRAWING NO.: 2957F
JOB NO.: 2957	SHEET 13 OF 18



SHEET 18
SHEET 14

SHEET 17
SHEET 14



TAX MAP 8 LOT 3-0
MARY ELLEN WILSON
51 LAKE AVE
MILL NECK, NY 11765
1552/680, 2287/446

THE RIVER OPEN SPACE PROTECTION AREA
684,600 sq. ft. ±
15.7 acres ±
AREA CALCULATED TO CENTERLINE OF RIVER

SHEET 13
SHEET 14

SHEET 14
SHEET 15

5/8" REBAR
SET, UP 3"
W/CONSERVATION CAP

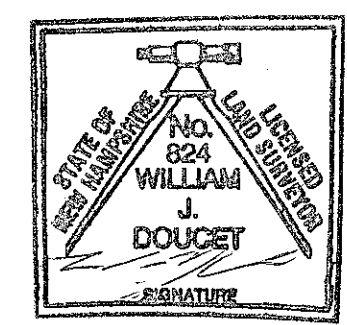
SHEET 14
SHEET 11

5/8" REBAR
SET, UP 3"
W/CONSERVATION CAP

SHEET 14
SHEET 10

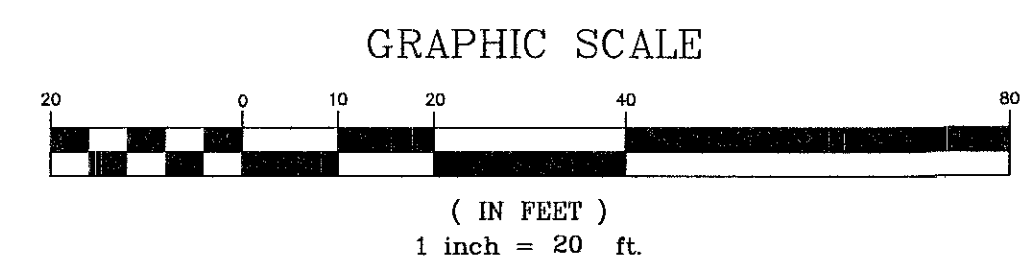
I certify that this survey plot is not a subdivision pursuant to this title (N.H.R.S.A. Title LXIV) and that the lines of streets and ways shown are those of public or private streets or ways already established and that no new ways are shown.

I certify that this survey and plan were prepared by me or by those under my direct supervision and falls under the Urban Survey Classification of the NH Code of Administrative Rules of the Board of Licensure for Land Surveyors. I certify that this survey was made on the ground and is correct to the best of my knowledge and belief. Random traverse survey by Total Station, with a precision greater than 1:15,000.



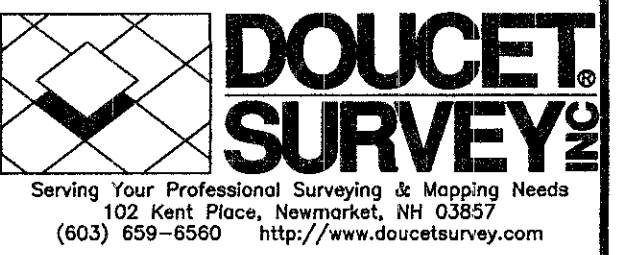
WILLIAM J. DOUCET
I.L.S. #824
8-10-12 DATE

The certifications shown herein are intended to meet registry of deed requirements and are not a certification to title or ownership of property shown. Owners of adjoining properties are according to current town assessors records.



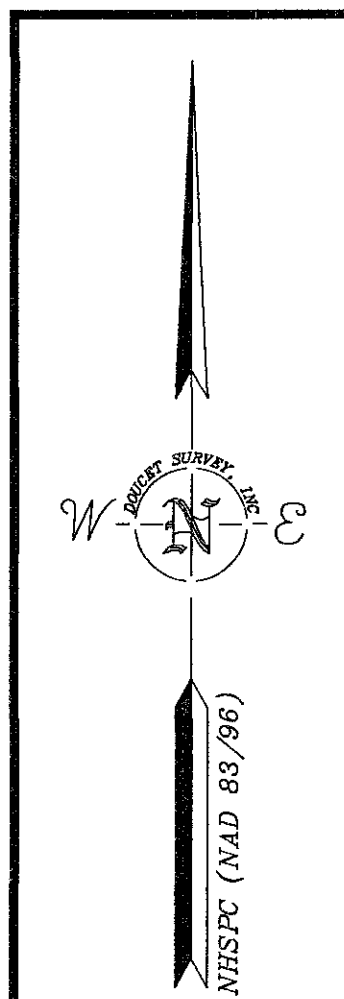
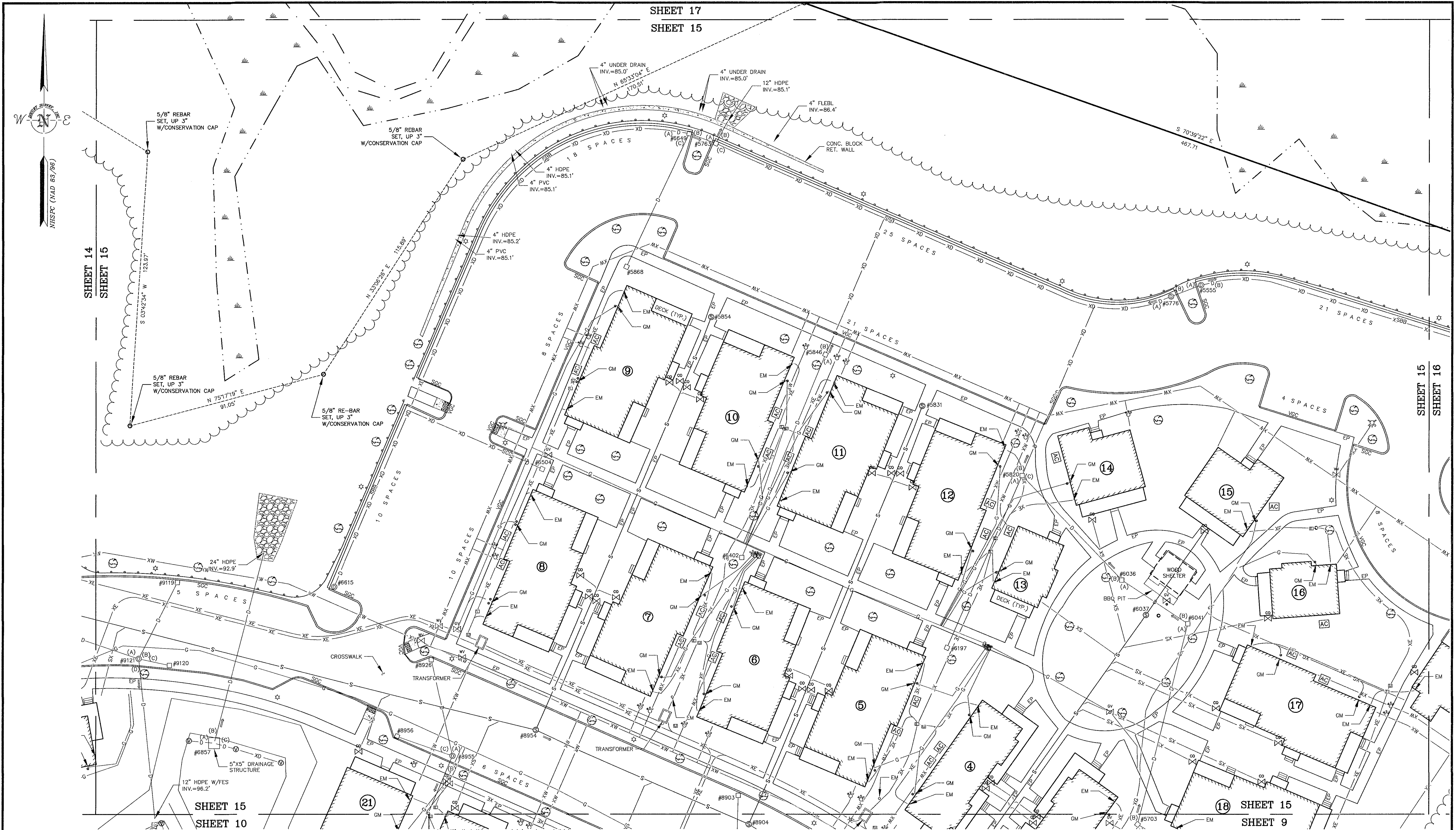
AS-BUILT PLAN
OF
"THE COTTAGES OF DURHAM"
FOR
CAPSTONE COMPANIES
(TAX MAP 9, LOT 10-3)
TECHNOLOGY DRIVE
DURHAM, NEW HAMPSHIRE

DRAWN BY: M.W.F.	DATE: AUGUST 1, 2012
CHECKED BY: W.J.D.	DRAWING NO.: 2957F
JOB NO.: 2957	SHEET 14 OF 18



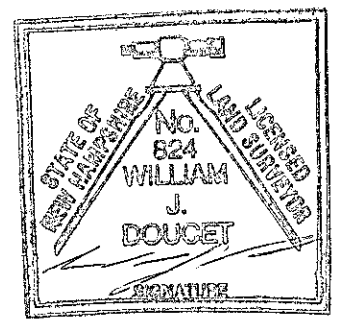
NO.	DATE	DESCRIPTION	BY

NOTE:
ALL ELECTRIC, GAS, TEL. WATER, SEWER AND DRAIN SERVICES ARE SHOWN IN SCHEMATIC FASHION. THEIR LOCATIONS ARE NOT PRECISE OR NECESSARILY ACCURATE. NO WORK WHATSOEVER SHALL BE UNDERTAKEN ON THIS SITE USING THIS PLAN TO LOCATE THE ABOVE SERVICES. CONSULT WITH THE PROPER AUTHORITIES CONCERNED WITH THE SUBJECT SERVICE LOCATIONS FOR INFORMATION REGARDING SUCH. CALL DIG-SAFE AT 1-888-DIG-SAFE.



NO.	DATE	DESCRIPTION	BY

NOTE:
 ALL ELECTRIC, GAS, TEL, WATER, SEWER AND DRAIN SERVICES ARE SHOWN IN SCHEMATIC FASHION. THEIR LOCATIONS ARE NOT PRECISE OR NECESSARILY ACCURATE. NO WORK WHATSOEVER SHALL BE UNDERTAKEN ON THIS SITE USING THIS PLAN TO LOCATE THE ABOVE SERVICES. CONSULT WITH THE PROPER AUTHORITIES CONCERNED WITH THE SUBJECT SERVICE LOCATIONS FOR INFORMATION REGARDING SUCH. CALL DIG-SAFE AT 1-888-DIG-SAFE.

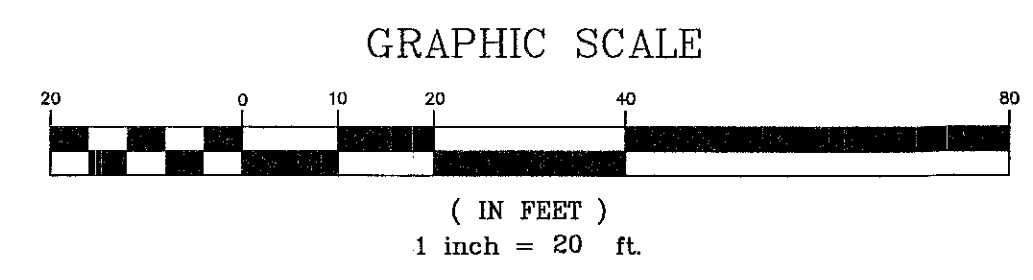


I certify that this survey plot is not a subdivision pursuant to this title (N.H.R.S.A. Title LXIV) and that the lines of streets and ways shown are those of public or private streets or ways already established and that no new ways are shown.

I certify that this survey and plan were prepared by me or by those under my direct supervision and falls under the Urban Survey Classification of the NH Code of Administrative Rules of the Board of Licensure for Land Surveyors. I certify that this survey was made on the ground and is correct to the best of my knowledge and belief. Random traverse survey by Total Station, with a precision greater than 1:15,000.

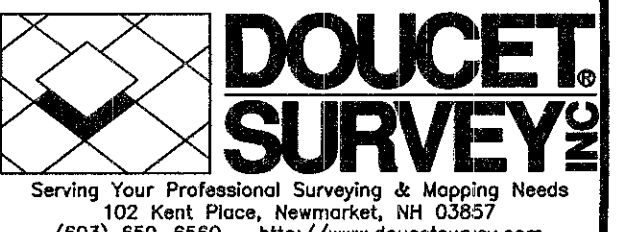
W. J. DOUCET
 L.L.S. #824
 DATE

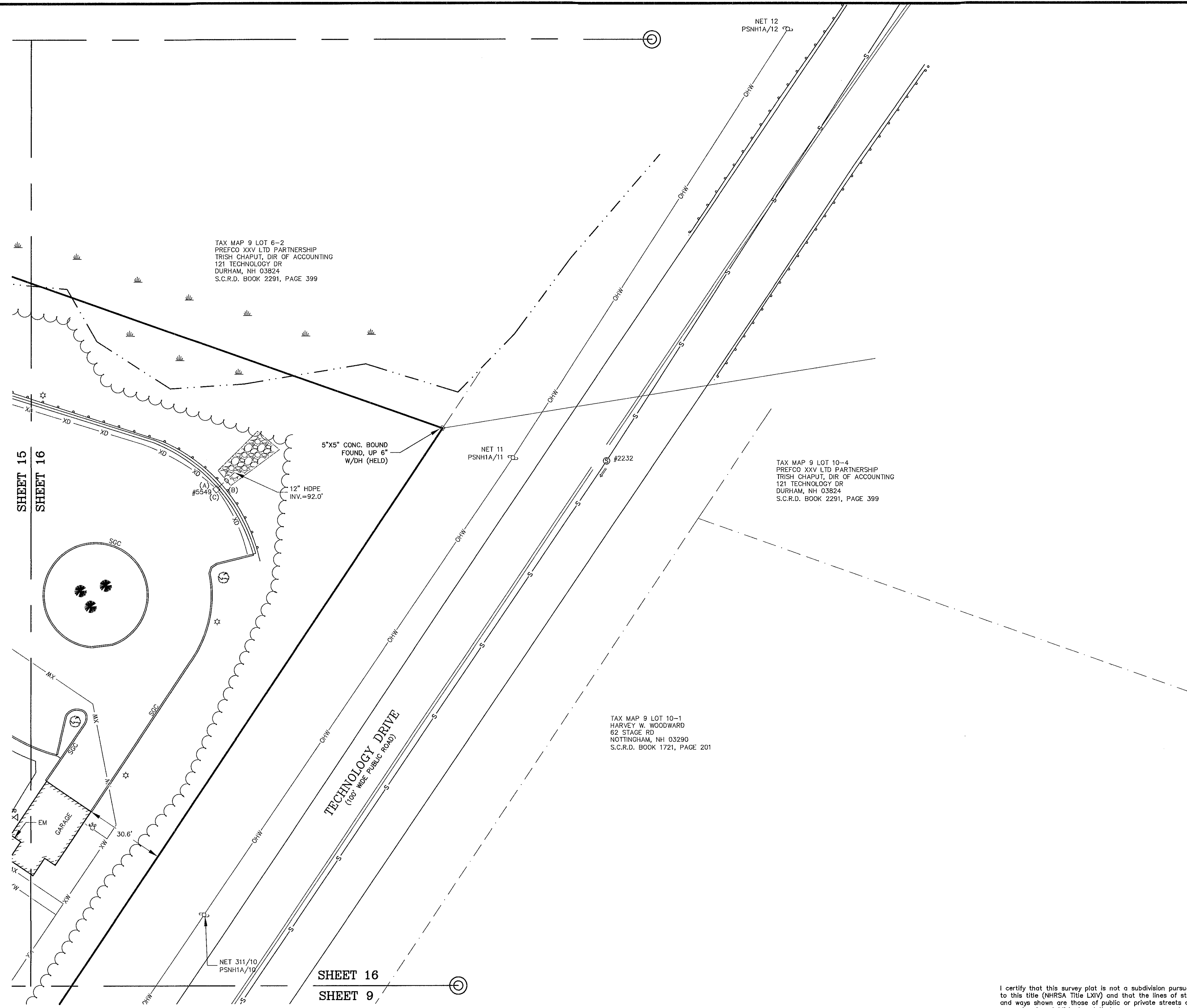
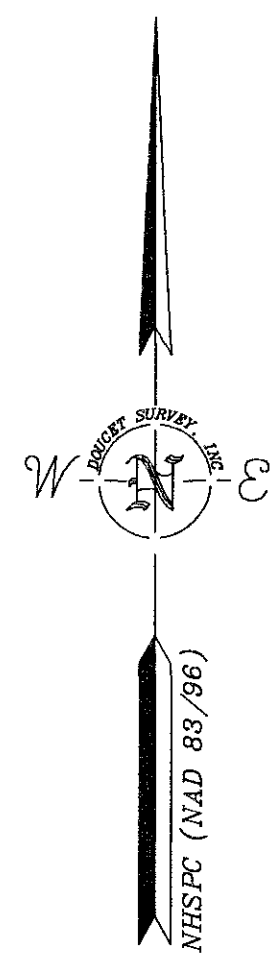
The certifications shown hereon are intended to meet registry of deed requirements and are not a certification to title or ownership of property shown. Owners of adjoining properties are according to current town assessors records.



AS-BUILT PLAN
 OF
 "THE COTTAGES OF DURHAM"
 FOR
 CAPSTONE COMPANIES
 (TAX MAP 9, LOT 10-3)
 TECHNOLOGY DRIVE
 DURHAM, NEW HAMPSHIRE

DRAWN BY:	M.W.F.	DATE:	AUGUST 1, 2012
CHECKED BY:	W.J.D.	DRAWING NO.:	2957F
JOB NO.:	2957	SHEET	15 OF 18



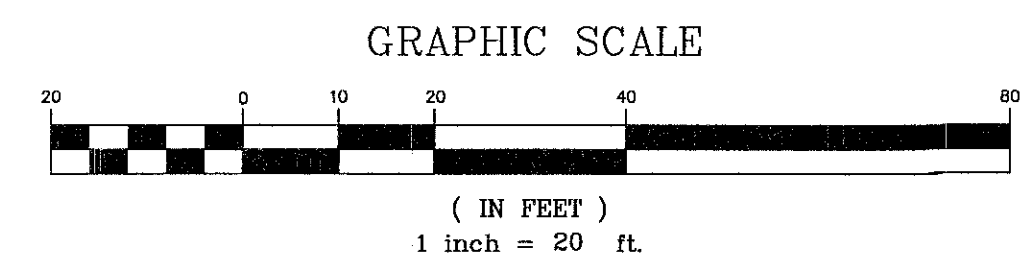
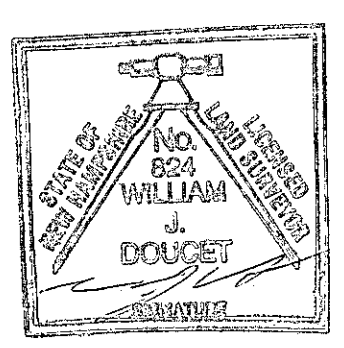


LEGEND

	UTILITY POLE & GUY WIRE
	LIGHT POLE
	GRANITE BOUND FOUND
	IRON PIPE/ROD FOUND
	FIRE HYDRANT
	GAS GATE VALVE
	WATER GATE VALVE
	GAS SHUTOFF VALVE
	WATER SHUTOFF VALVE
	CONDUIT
	VENT PIPE
	CLEANOUT
	CROSSWALK TRACTION MAT
	ELECTRIC BOX
	UTILITY BOX
	CATCH BASIN (ROUND)
	CATCH BASIN
	DRAIN MANHOLE
	SEWER MANHOLE
	JURISDICTIONAL WETLAND SYMBOL
	TREE STUMP
	CONIFEROUS TREE
	DECIDUOUS TREE
	CONCRETE
	RIP RAP
	BOLLARD
	DRAINAGE FLOW DIRECTION ARROW
	TYP.
	EM
	GM
	EP
	EDGE OF PAVEMENT
	CONCRETE
	VGC
	SGC
	SBB
	FES
	BEARING
	PROPERTY LINES
	DIST BEARING
	CONSERVATION EASEMENT LINE
	STOCKADE FENCE
	OVERHEAD WIRES
	SEWER LINE
	DRAIN LINE
	GAS LINE (PER MARKINGS)
	APPROX. ABUTTERS LOT LINE
	EASEMENT LINE
	TREE LINE
	GUARDRAIL
	EDGE OF JURISDICTIONAL WETLAND (SEE NOTE #5)
	SEWER LINE (PER CONTRACTORS AS-BUILT)
	DRAIN LINE (PER CONTRACTORS AS-BUILT)
	GAS LINE (PER CONTRACTORS AS-BUILT)
	WATER LINE (PER CONTRACTORS AS-BUILT)
	UNDERGROUND ELECTRIC LINE (PER CONTRACTORS AS-BUILT)
	UNIT NUMBER (PER REF. PLAN #1)

NO.	DATE	DESCRIPTION	BY

NOTE:
 ALL ELECTRIC, GAS, TEL, WATER, SEWER AND DRAIN SERVICES ARE SHOWN IN SCHEMATIC FASHION. THEIR LOCATIONS ARE NOT PRECISE OR NECESSARILY ACCURATE. NO WORK WHATSOEVER SHALL BE UNDERTAKEN ON THIS SITE USING THIS PLAN TO LOCATE THE ABOVE SERVICES. CONSULT WITH THE PROPER AUTHORITIES CONCERNED WITH THE SUBJECT SERVICE LOCATIONS FOR INFORMATION REGARDING SUCH. CALL DIG-SAFE AT 1-888-DIG-SAFE.



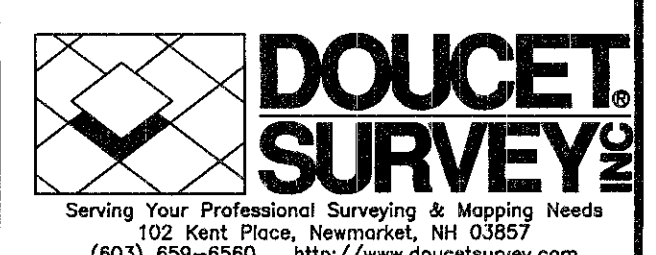
I certify that this survey plot is not a subdivision pursuant to this title (NHRSA Title LXIV) and that the lines of streets and ways shown are those of public or private streets or ways already established and that no new ways are shown.

I certify that this survey and plan were prepared by me or by those under my direct supervision and falls under the Urban Survey Classification of the NH Code of Administrative Rules of the Board of Licensure for Land Surveyors. I certify that this survey was made on the ground and is correct to the best of my knowledge and belief. Random traverse survey by Total Station, with a precision greater than 1:15,000.

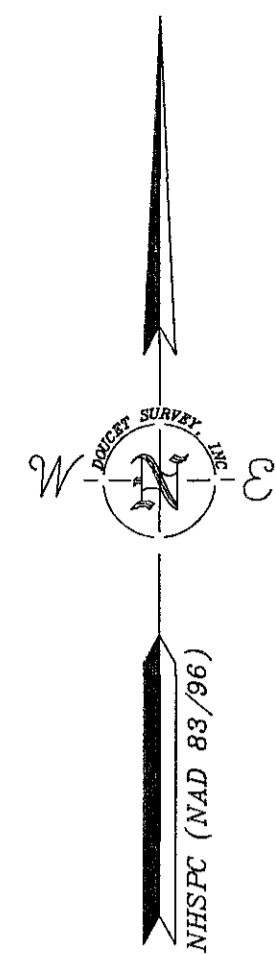
[Signature] L.L.S. #824
 8-10-12 DATE

The certifications shown hereon are intended to meet registry of deed requirements and are not a certification to title or ownership of property shown. Owners of adjoining properties are according to current town assessors records.

DRAWN BY: M.W.F.	DATE: AUGUST 1, 2012
CHECKED BY: W.J.D.	DRAWING NO.: 2957F
JOB NO.: 2957	SHEET 16 OF 18



AS-BUILT PLAN
 OF
 "THE COTTAGES OF DURHAM"
 FOR
 CAPSTONE COMPANIES
 (TAX MAP 9, LOT 10-3)
 TECHNOLOGY DRIVE
 DURHAM, NEW HAMPSHIRE



LEGEND

	UTILITY POLE & GUY WIRE
	LIGHT POLE
	GRANITE BOUND FOUND
	IRON PIPE/ROD FOUND
	FIRE HYDRANT
	GAS GATE VALVE
	WATER GATE VALVE
	GAS SHUTOFF VALVE
	WATER SHUTOFF VALVE
	CONDUIT
	VENT PIPE
	CLEANOUT
	CROSSWALK TRACTION MAT
	ELECTRIC BOX
	UTILITY BOX
	CATCH BASIN (ROUND)
	CATCH BASIN
	DRAIN MANHOLE
	SEWER MANHOLE
	JURISDICTIONAL WETLAND SYMBOL
	TREE STUMP
	CONIFEROUS TREE
	DECIDUOUS TREE
	CONCRETE
	RIP RAP
	BOLLARD
	DRAINAGE FLOW DIRECTION ARROW
	TYPICAL
	EM
	GM
	EP
	CONCRETE
	VERTICAL GRANITE CURB
	SLOPED GRANITE CURB
	SLOPED BITUMINOUS BERM
	FLARED END SECTION
	BEARING
	DISTANCE
	BEARING DISTANCE
	DISTANCE
	CONSERVATION EASEMENT LINE
	STOCKADE FENCE
	OVERHEAD WIRES
	SEWER LINE
	DRAIN LINE
	GAS LINE (PER MARKINGS)
	APPROX. ABUTTERS LOT LINE
	EASEMENT LINE
	TREE LINE
	GUARDRAIL
	EDGE OF JURISDICTIONAL WETLAND (SEE NOTE #5)
	SEWER LINE (PER CONTRACTORS AS-BUILT)
	DRAIN LINE (PER CONTRACTORS AS-BUILT)
	GAS LINE (PER CONTRACTORS AS-BUILT)
	WATER LINE (PER CONTRACTORS AS-BUILT)
	UNDERGROUND ELECTRIC LINE (PER CONTRACTORS AS-BUILT)
	UNIT NUMBER (PER REF. PLAN #1)

TAX MAP 9 LOT 6-2
 PREFCO XXV LTD PARTNERSHIP
 TRISH CHAPUT, DIR OF ACCOUNTING
 121 TECHNOLOGY DR
 DURHAM, NH 03824
 S.C.R.D. BOOK 2291, PAGE 399

THE RIVER OPEN SPACE
 PROTECTION AREA
 684,600 sq. ft. ±
 15.7 acres ±
 AREA CALCULATED TO
 CENTERLINE OF RIVER

5/8" REBAR
 SET, UP 3"
 W/CONSERVATION CAP

N 80°57'45" E
 92.09'

12" HDPE
 INV.=81.9'

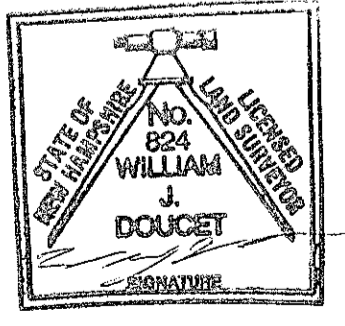
5/8" REBAR
 SET, UP 3"
 W/CONSERVATION CAP

SHEET 17
 SHEET 14

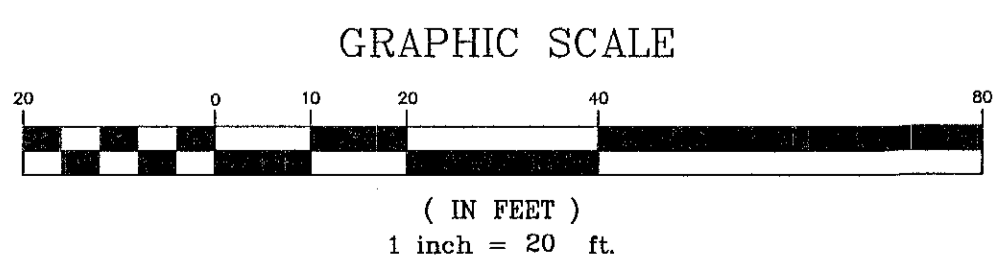
SHEET 17
 SHEET 15

I certify that this survey plot is not a subdivision pursuant to this title (NH RSA Title LXIV) and that the lines of streets and ways shown are those of public or private streets or ways already established and that no new ways are shown.

I certify that this survey and plan were prepared by me or by those under my direct supervision and falls under the Urban Survey Classification of the NH Code of Administrative Rules of the Board of Licensure for Land Surveyors. I certify that this survey was made on the ground and is correct to the best of my knowledge and belief. Random traverse survey by Total Station, with a precision greater than 1:15,000.

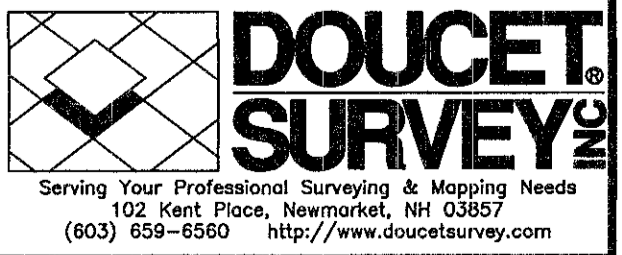


W. J. Doucet
 L.L.S. #824
 DATE 8-10-12



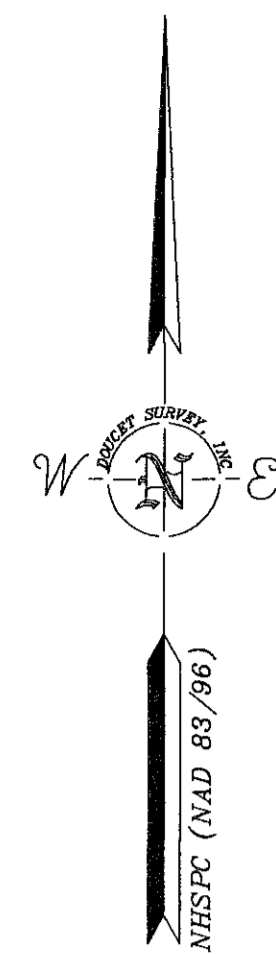
AS-BUILT PLAN
 OF
 "THE COTTAGES OF DURHAM"
 FOR
 CAPSTONE COMPANIES
 (TAX MAP 9, LOT 10-3)
 TECHNOLOGY DRIVE
 DURHAM, NEW HAMPSHIRE

DRAWN BY: M.W.F.	DATE: AUGUST 1, 2012
CHECKED BY: W.J.D.	DRAWING NO.: 2957F
JOB NO.: 2957	SHEET 17 OF 18



NO.	DATE	DESCRIPTION	BY

NOTE:
 ALL ELECTRIC, GAS, TEL, WATER, SEWER AND DRAIN SERVICES ARE SHOWN IN SCHEMATIC FASHION, THEIR LOCATIONS ARE NOT PRECISE OR NECESSARILY ACCURATE. NO WORK WHATSOEVER SHALL BE UNDERTAKEN ON THIS SITE USING THIS PLAN TO LOCATE THE ABOVE SERVICES. CONSULT WITH THE PROPER AUTHORITIES CONCERNED WITH THE SUBJECT SERVICE LOCATIONS FOR INFORMATION REGARDING SUCH. CALL DIG-SAFE AT 1-888-DIG-SAFE.



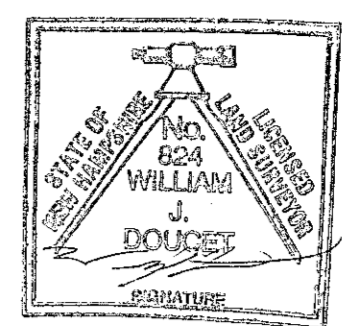
ROW OF 3/4" IRON PINS
CONTINUES NORTH

3/4" IRON PIN
FOUND, UP 4"

5"x5" CONC. BOUND
FOUND, UP 10"
HELD FOR LINE
(S 70°39'22" E, 3.24
TO PROPERTY CORNER)

4"x4" CONC. BOUND
FOUND, UP 4"
W/REBAR AT CENTER
NOT HELD

N 177°38'23" E
13.724'



I certify that this survey plot is not a subdivision pursuant to this title (N.H.R.S.A. Title LXIV) and that the lines of streets and ways shown are those of public or private streets or ways already established and that no new ways are shown.

I certify that this survey and plan were prepared by me or by those under my direct supervision and falls under the Urban Survey Classification of the NH Code of Administrative Rules of the Board of Licensure for Land Surveyors; I certify that this survey was made on the ground and is correct to the best of my knowledge and belief. Random traverse survey by Total Station, with a precision greater than 1:15,000.

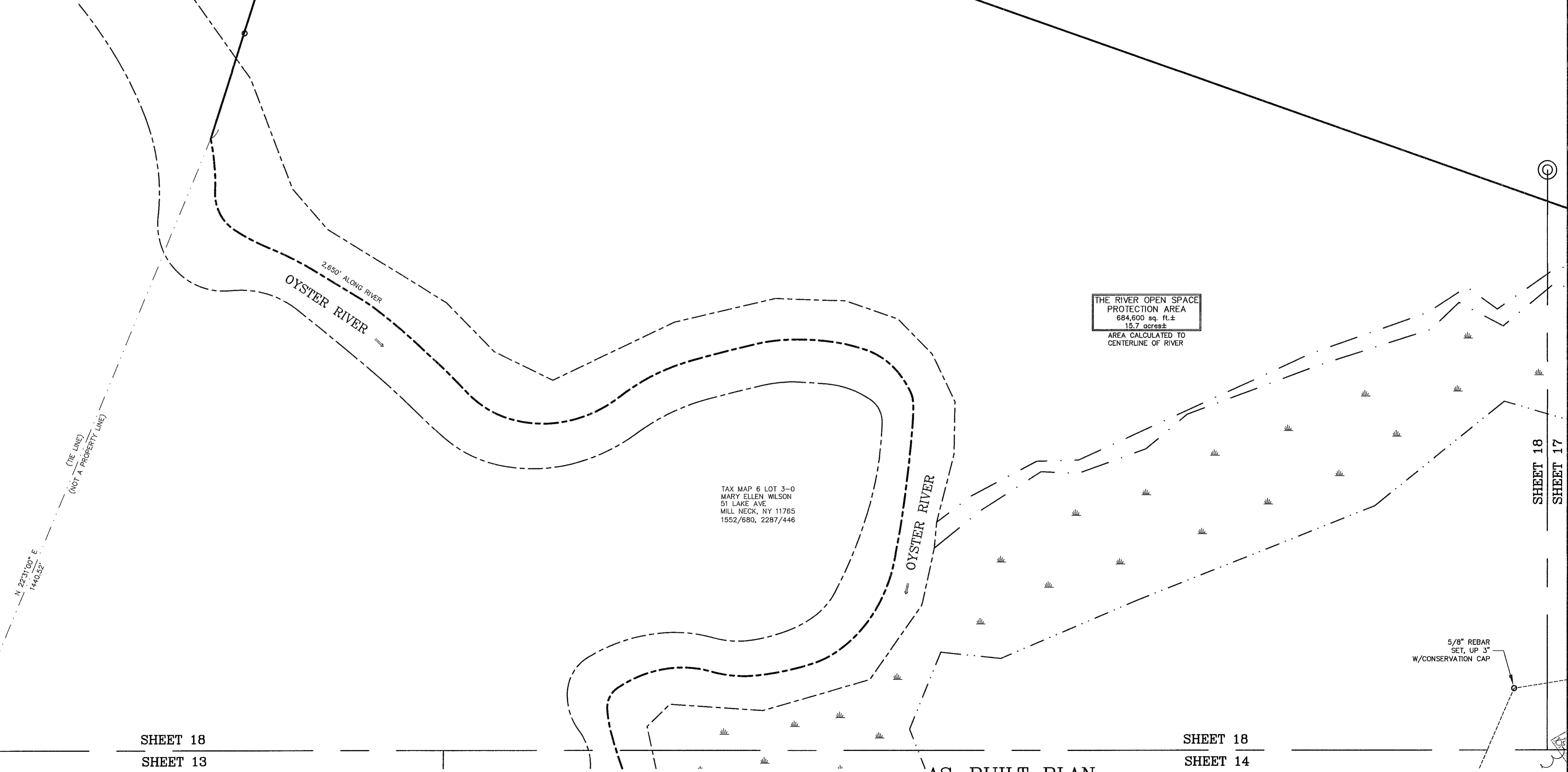
DATE: 8-1-12 L.L.S. #824

The certifications shown hereon are intended to meet registry of deed requirements and are not a certification to title or ownership of property shown. Owners of adjoining properties are according to current town assessors records.

TAX MAP 9 LOT 6-2
PREFCO XXV LTD PARTNERSHIP
TRISH CHAPUT, DIR OF ACCOUNTING
121 TECHNOLOGY DR
DURHAM, NH 03824
S.C.R.D. BOOK 2291, PAGE 399

LEGEND

- UTILITY POLE & GUY WIRE
- LIGHT POLE
- GRANITE BOUND FOUND
- IRON PIPE/ROD FOUND
- FIRE HYDRANT
- GAS GATE VALVE
- WATER GATE VALVE
- GAS SHUTOFF VALVE
- WATER SHUTOFF VALVE
- CONDUIT
- VENT PIPE
- CLEANOUT
- CROSSWALK TRACTION MAT
- ELECTRIC BOX
- UTILITY BOX
- CATCH BASIN (ROUND)
- CATCH BASIN
- DRAIN MANHOLE
- SEWER MANHOLE
- JURISDICTIONAL WETLAND SYMBOL
- TREE STUMP
- CONIFEROUS TREE
- DECIDUOUS TREE
- CONCRETE
- RIP RAP
- BOLLARD
- DRAINAGE FLOW DIRECTION ARROW
- TYPICAL
- EM
- GM
- EP
- CONC.
- VGC
- SDC
- SBB
- FES
- BEARING
- DIST
- BEARING
- DIST
- OHW
- S
- D
- G
- EASEMENT LINE
- TREE LINE
- GUARDRAIL
- EDGE OF JURISDICTIONAL WETLAND (SEE NOTE #5)
- SEWER LINE (PER CONTRACTORS AS-BUILT)
- DRAIN LINE (PER CONTRACTORS AS-BUILT)
- GAS LINE (PER CONTRACTORS AS-BUILT)
- WATER LINE (PER CONTRACTORS AS-BUILT)
- UNDERGROUND ELECTRIC LINE (PER CONTRACTORS AS-BUILT)
- UNIT NUMBER (PER REF. PLAN #1)



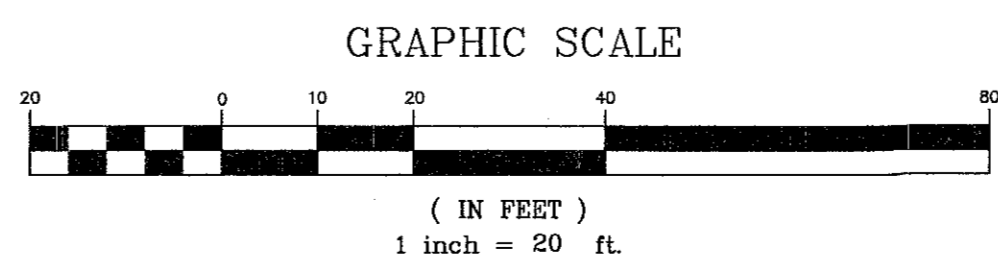
THE RIVER OPEN SPACE
PROTECTION AREA
684,600 sq. ft.
15.7 acres ±
AREA CALCULATED TO
CENTERLINE OF RIVER

TAX MAP 6 LOT 3-0
MARY ELLEN WILSON
51 LAKE AVE
MILL NECK, NY 11765
1552/680, 2287/446

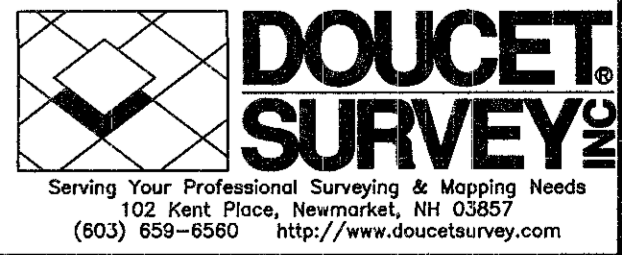
SHEET 18
SHEET 13

SHEET 18
SHEET 14

AS-BUILT PLAN
OF
"THE COTTAGES OF DURHAM"
FOR
CAPSTONE COMPANIES
(TAX MAP 9, LOT 10-3)
TECHNOLOGY DRIVE
DURHAM, NEW HAMPSHIRE



DRAWN BY:	M.W.F.	DATE:	AUGUST 1, 2012
CHECKED BY:	W.J.D.	DRAWING NO.:	2957F
JOB NO.:	2957	SHEET	18 OF 18



NOTE:
ALL ELECTRIC, GAS, TEL, WATER, SEWER AND DRAIN SERVICES ARE SHOWN IN SCHEMATIC FASHION, THEIR LOCATIONS ARE NOT PRECISE OR NECESSARILY ACCURATE. NO WORK WHATSOEVER SHALL BE UNDERTAKEN ON THIS SITE USING THIS PLAN TO LOCATE THE ABOVE SERVICES. CONSULT WITH THE PROPER AUTHORITIES CONCERNED WITH THE SUBJECT SERVICE LOCATIONS FOR INFORMATION REGARDING SUCH. CALL DIG-SAFE AT 1-888-DIG-SAFE.

NO.	DATE	DESCRIPTION	BY