

HARRIMAN

AUBURN PORTLAND PORTSMOUTH BOSTON

Harriman Project No. 16117

RECEIVED
Town of Durham
JUN 11 2018
Planning, Assessing
and Zoning

Legend

- Commercial
- Parking/Mechanical
- Residential

**DRAFT
PERMIT SET
NOT FOR CONSTRUCTION**



SCALE IN FEET
0 40' 80'
GRAPHIC SCALE

**Mill Plaza
Redevelopment**

Colonial Durham
Associates, LP

7 Mill Road, Unit L
Durham,
New Hampshire 03824

MARK	DATE	DESCRIPTION
PROJECT NO:	16617	
DATE:	5/23/2018	
FILE:		
DRAWN BY:	ERP	
CHECKED:		
APPROVED:		

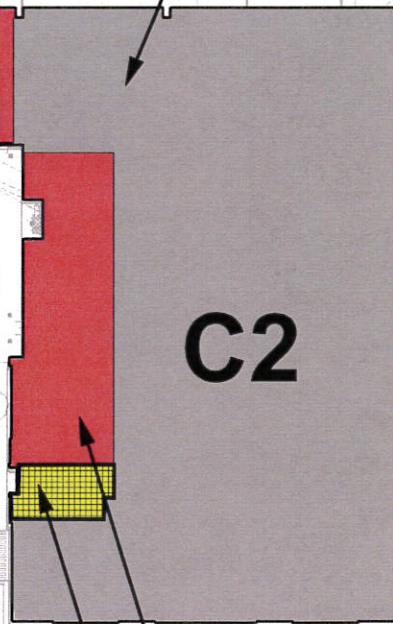
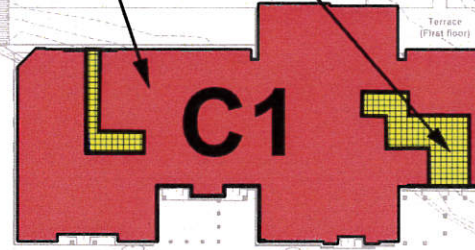
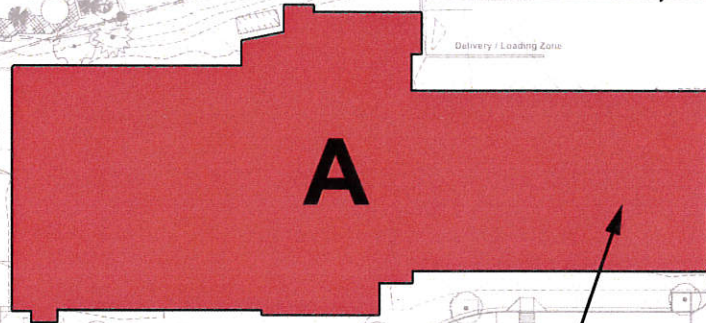
SCALE: AS SHOWN

A10.1

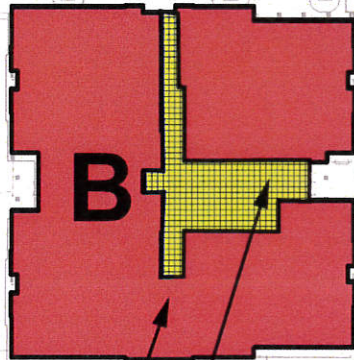
RESIDENTIAL: (CIRCULATION)
1,315 S.F.

COMMERCIAL: RETAIL / OFFICE
16,695 S.F.

ENCLOSED PARKING
42,295 S.F.



EXISTING COMMERCIAL: RETAIL
31,165 S.F.



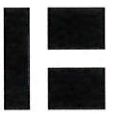
COMMERCIAL: RETAIL / OFFICE
19,700 S.F.

COMMERCIAL: RETAIL / OFFICE
5,655 S.F.

RESIDENTIAL: (CIRCULATION)
2,575 S.F.

RESIDENTIAL: (CIRCULATION)
1,015 S.F.

FIRST FLOOR



HARRIMAN

ALBURN PORTLAND PORTSMOUTH BOSTON

Harriman Project No. 16117

**DRAFT
PERMIT SET
NOT FOR CONSTRUCTION**



SCALE IN FEET
0 40' 80'
GRAPHIC SCALE

**Mill Plaza
Redevelopment**

Colonial Durham
Associates, LP

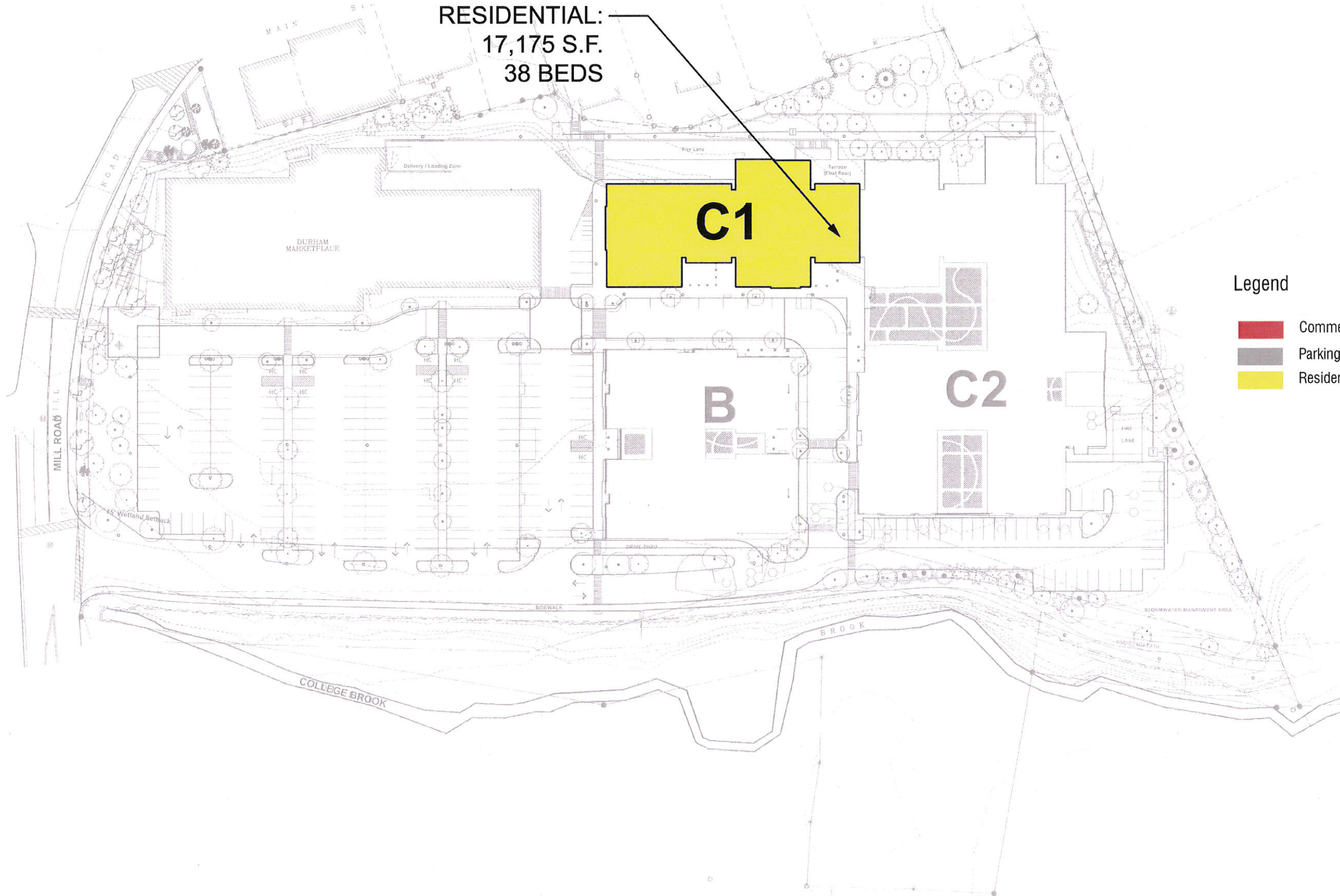
7 Mill Road, Unit L
Durham,
New Hampshire 03824

MARK	DATE	DESCRIPTION
PROJECT NO:	16117	
DATE:	5/23/2018	
FILE:		
DRAWN BY:	ERP	
CHECKED:		
APPROVED:		

SCALE: AS SHOWN

A10.4

RESIDENTIAL:
17,175 S.F.
38 BEDS



FOURTH FLOOR