



AG Architects, PC
 634 Central Avenue, Dover, NH 03820
 E-Mail: ag@agarchitects.com
 www.agarchitects.com
 Phone: 603.743.3700
 Fax: 603.743.3777

Kappa Delta Expansion

Durham, New Hampshire



Revisions:	Date: 18 December 2018
	Scale: 1/4" = 1'-0"
	Drawn By: JG Checked By: AG
	Sheet: 12 of 17 Project No.: 18-738.1
	Sheet Title: Exterior Elevations
Sheet Number:	A4.1



Progress Print
Not For Construction



Not For Construction

Kappa Delta Expansion

Durham, New Hampshire



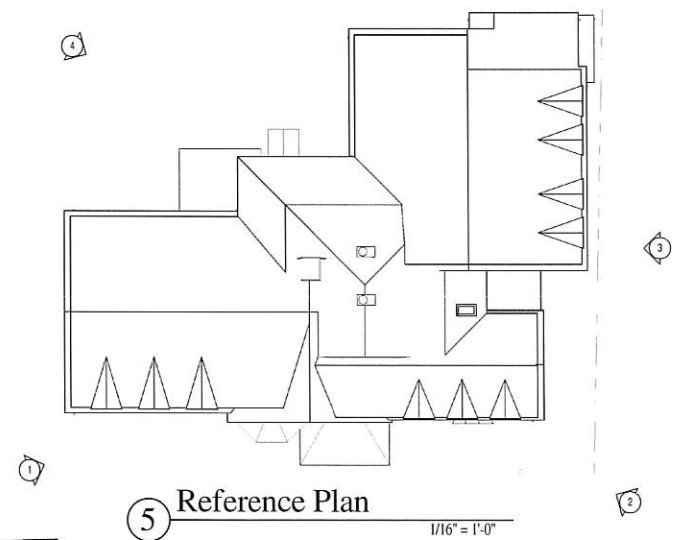
<small>AG Architects, PC</small> Consultant:	
Revisions:	
Date: 18 December 2018	
Scale: 1/4" = 1'-0"	
Drawn By: JG	Checked By: AG
Sheet: 13 of 17	Project No.: 18-738.1
Sheet Title: Exterior Elevations	
Sheet Number: A4.2	



① 3D View 1

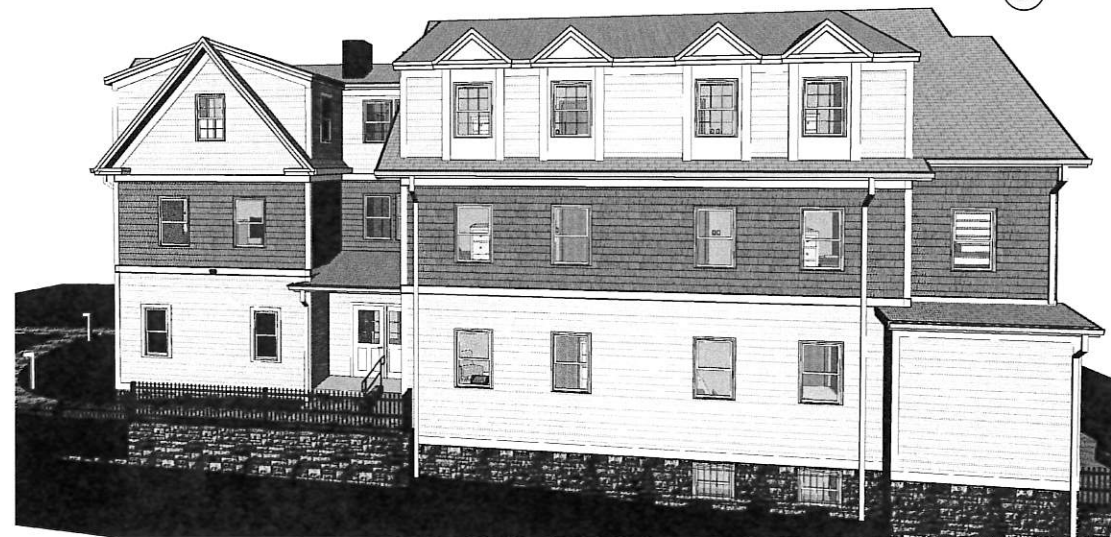


② 3D View 2



⑤ Reference Plan

1/16" = 1'-0"



③ 3D View 3



④ 3D View 4



AG Architects, PC
 634 Central Avenue, Dover, NH 03820
 E-Mail: ag@agarchitects.com
 www.agarchitects.com
 Phone: 603-743-3700
 Fax: 603-743-3777

Kappa Delta Expansion

Durham, New Hampshire



AG Architects, PC	
Consultant:	
Revisions:	
Date:	18 December 2018
Scale:	1/16" = 1'-0"
Drawn By:	JG Checked By: AG
Sheet:	16 of 17 Project No.: 18-738.1
Sheet Title: Exterior Views	
Sheet Number:	

A4.3