

TRIAL 36600
 MARK UP: 67 IN
 UP/PSNH/10A
 ELEV.=64.03'

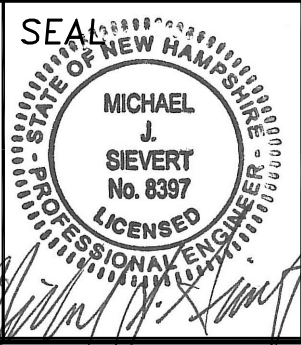
ALPHA CHI OMEGA
 NATIONAL HOUSING
 5939 CASSETT ROAD
 INDIANAPOLIS IN
 TAX MAP 2
 LOT 12-2
 USE: STUDENT HOUSING

TRIAL 36600
 MARK UP: 67 IN
 UP/PSNH/10A
 ELEV.=64.03'

MJS ENGINEERING, P.C.
 CIVIL • STRUCTURAL • ENVIRONMENTAL
 5 RAILROAD ST., P.O. BOX 359
 NEWHAMPSHIRE, NH 03857
 PHONE: (603) 659-4979, FAX: (603) 659-4627
 E-MAIL: MJS@MJS-ENGINEERING.COM

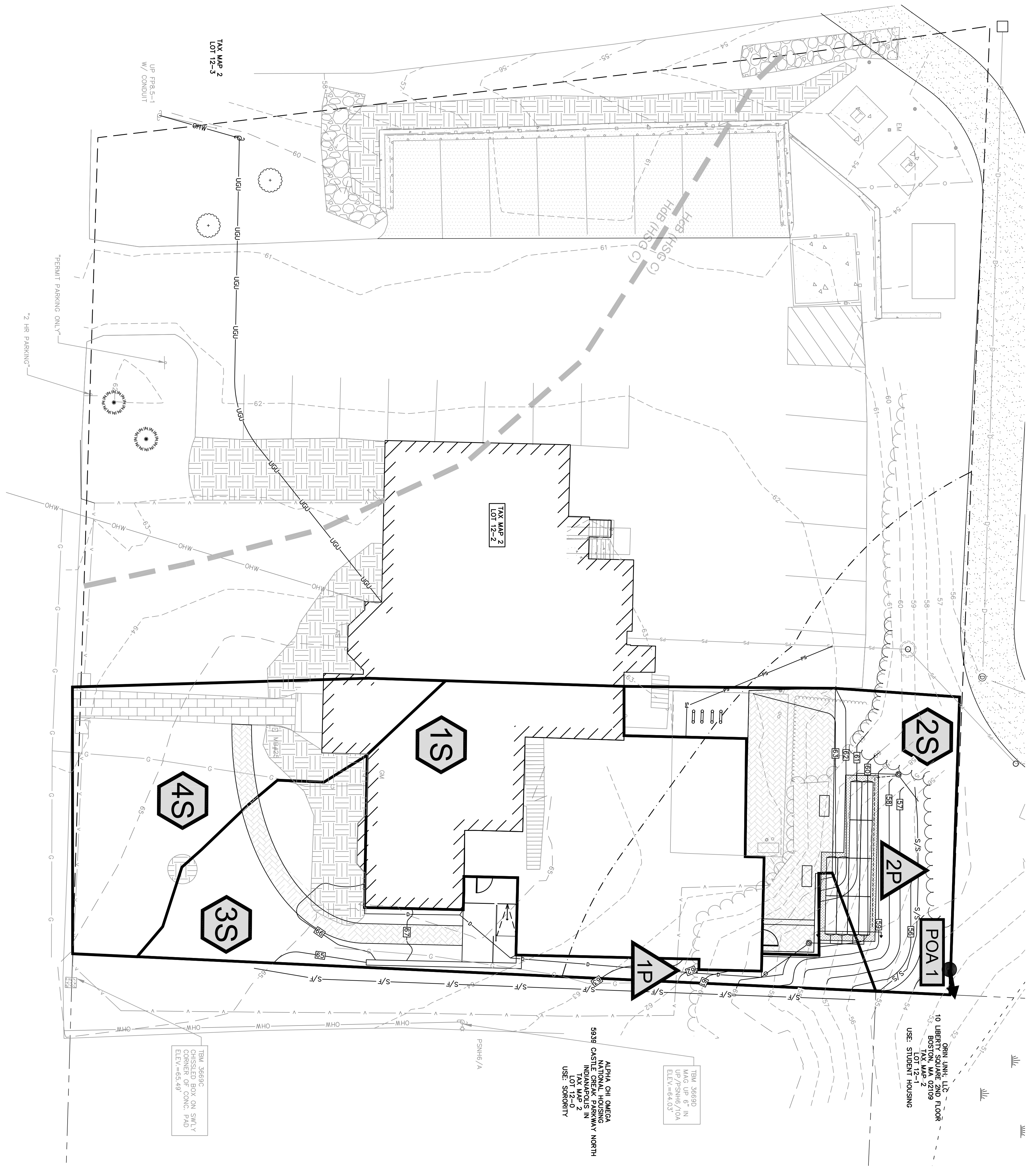
SITE PLAN
 prepared for
KAPPA DELTA
 TAX MAP 2, LOT 12-2
 25 MADBURY ROAD
 DURHAM, NH

DATE: 10/22/18
 SCALE: 1" = 10'
 DESIGNED BY: MJS
 DRAWN BY: MCS
 APPROVED BY: MJS
 DWG FILE: 18-067 C1J.dwg



NO.	REVISIONS	DATE	INT.
1	DESIGN REVISION	11/29/18	MCS
0	INITIAL SUBMISSION TO DURHAM ZONING BOARD	10/24/18	MCS

PRE
 JOB: 18-067

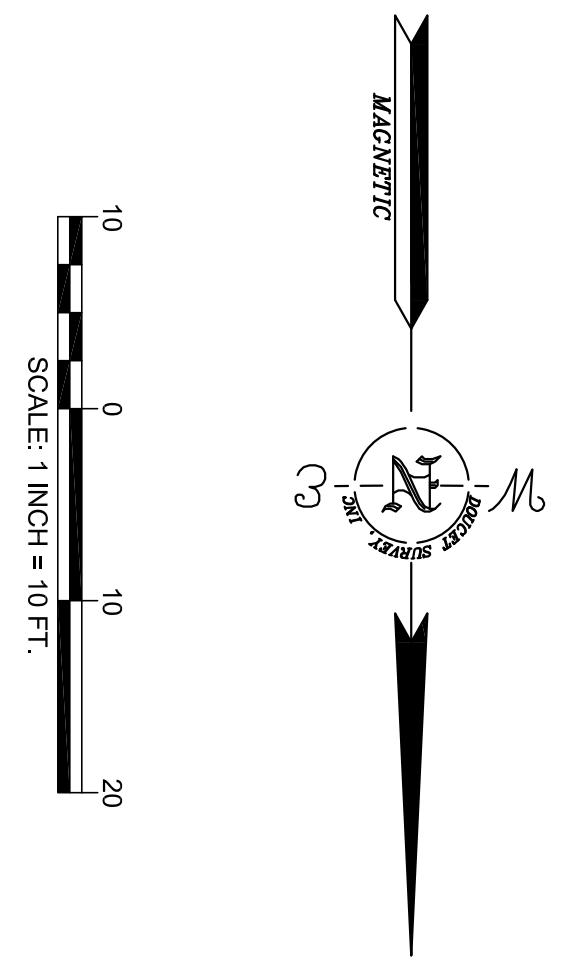
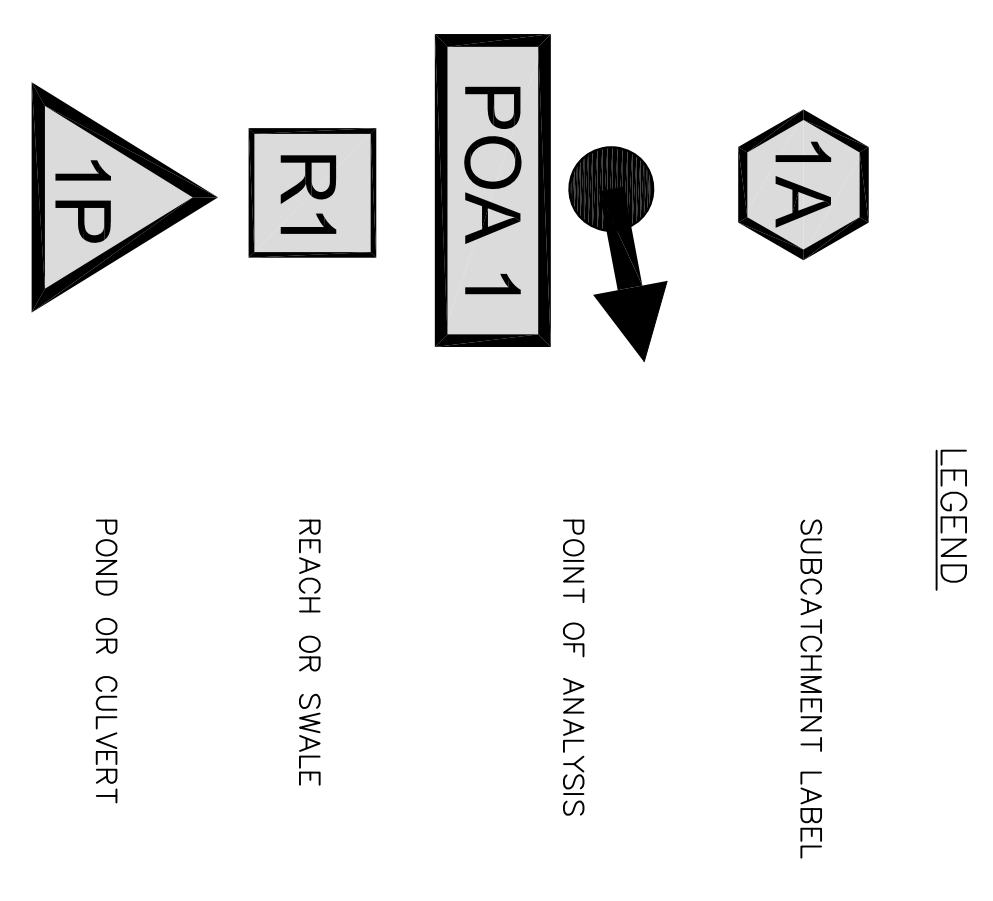
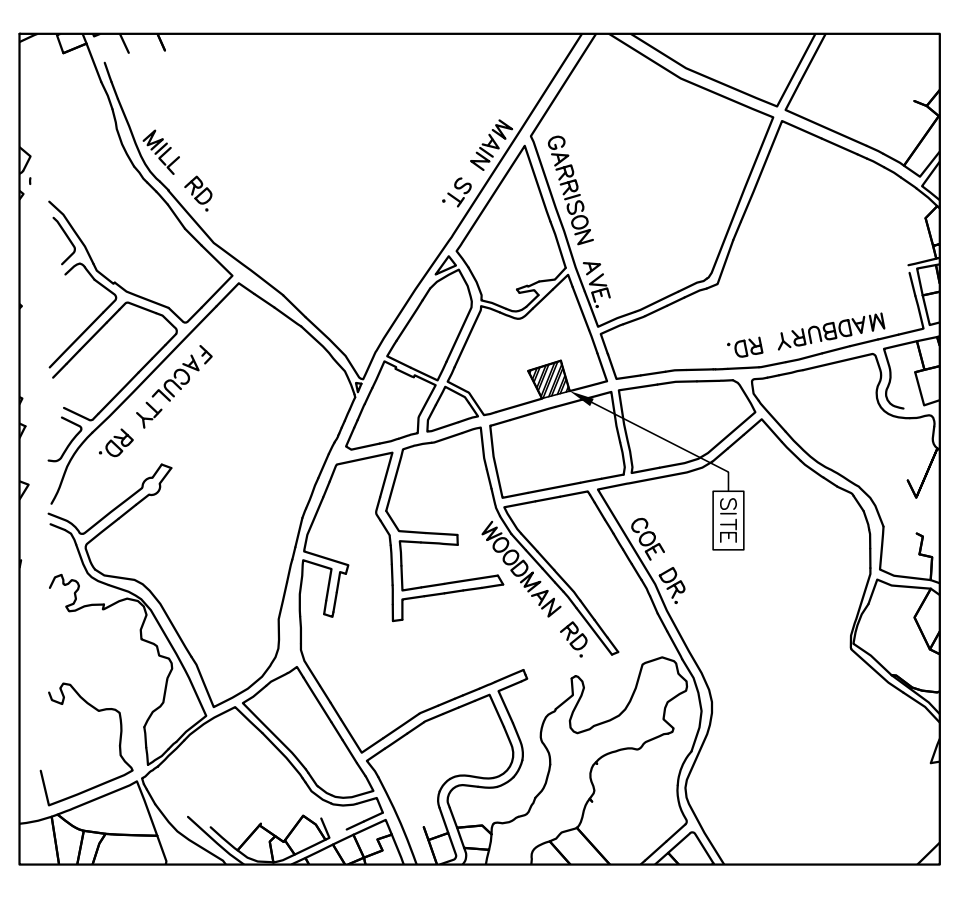


TRIAL 36600
 MARK UP: 67 IN
 UP/PSNH/10A
 ELEV.=64.03'

ALPHA CHI OMEGA
 NATIONAL HOUSING
 5939 CASSETT BLVD
 INDIANAPOLIS IN
 TAX MAP 2
 LOT 12-2
 USE: STUDENT HOUSING

TRIAL 36600
 MARK UP: 113'
 10 LIBERTY SQUARE 2ND FLOOR
 BOSTON, MA 02109
 TAX MAP 2
 USE: STUDENT HOUSING

TRIAL 36600
 CORNER BOX ON SWLY
 CORNER OF CONC. PAD
 ELEV.=65.49'



POST	JOB: 18-067		<p>MJS ENGINEERING, P.C. CIVIL • STRUCTURAL • ENVIRONMENTAL 5 RAILROAD ST., P.O. BOX 359 NEWHAMPSHIRE, NH 03857 PHONE: (603) 659-4979, FAX: (603) 659-4627 E-MAIL: MJS@MJS-ENGINEERING.COM</p>	SITE PLAN prepared for KAPPA DELTA TAX MAP 2, LOT 12-2 25 MADBURY ROAD DURHAM, NH		DATE: 10/22/18 SCALE: 1" = 10' DESIGNED BY: MJS DRAWN BY: MCS APPROVED BY: MJS DWG FILE: 18-067 C1J.dwg		REVISIONS		11/29/18 MCS 10/24/18 MCS
	DESIGN REVISION			INITIAL SUBMISSION TO DURHAM ZONING BOARD		NO.		DATE	INT.	
	1.			0.		NO.		DATE	INT.	