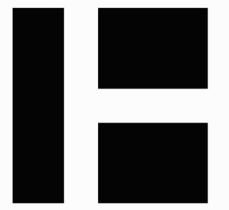


# UNH: HUDDLESTON HALL ADDITION AND RENOVATIONS





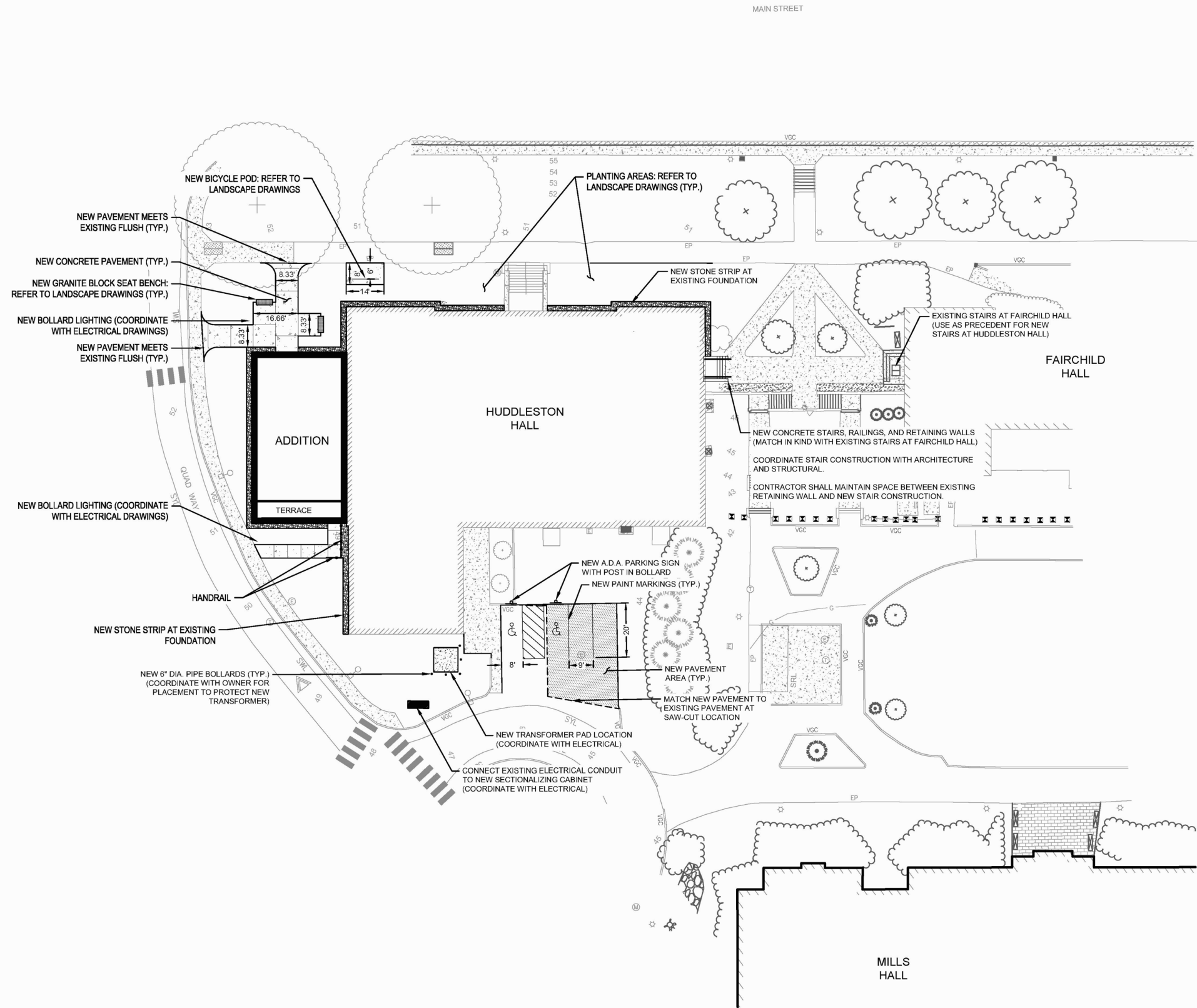
HARRIMAN

UNH ID: 2013-1155  
HUDDLESTON HALL  
LIFE SAFETY  
IMPROVEMENTS

73 MAIN STREET  
DURHAM, NEW HAMPSHIRE

Harriman Project No. 21257

Key Plan Proj North

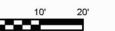


**PROGRESS**  
SEPTEMBER 17, 2022

Rev Date	Revision Description

**PRELIMINARY  
NOT FOR  
CONSTRUCTION**

1" = 20' - 0"



PA / PE: SKF  
Drawn By: CWB / HAS

SITE LAYOUT PLAN



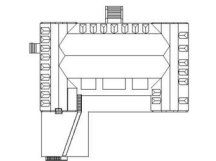
HARRIMAN

UNH ID: 2013-1155  
HUDDLESTON HALL  
LIFE SAFETY  
IMPROVEMENTS

73 MAIN STREET  
DURHAM, NEW HAMPSHIRE

Harriman Project No. 21257

Key Plan Proj North



**PROGRESS**  
8/17/2022 12:33:54 PM

Rev Date	Revision Description

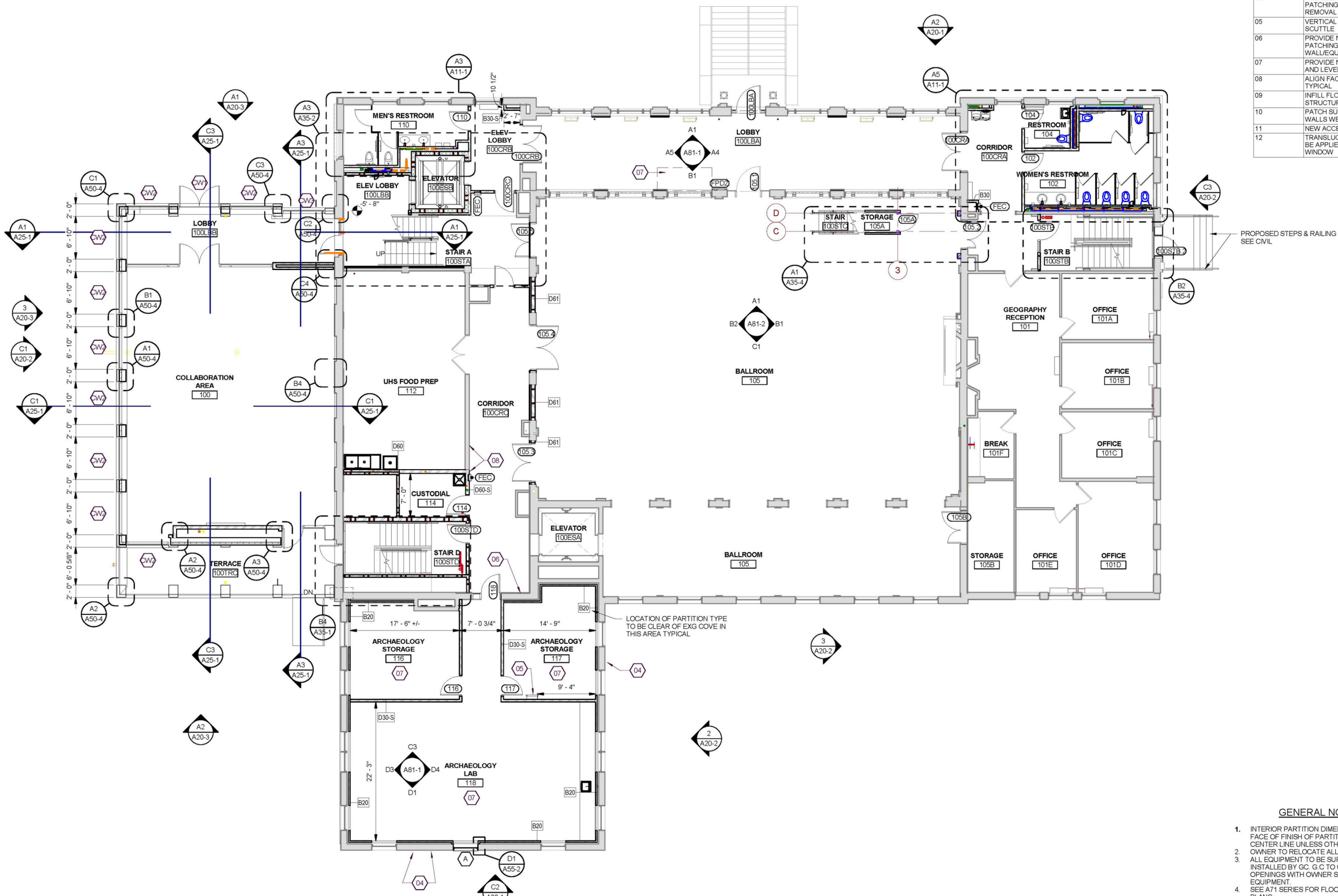
**PRELIMINARY  
NOT FOR  
CONSTRUCTION**

PA / PE: MDL  
Drawn By: SAA

FIRST FLOOR PLAN

A2

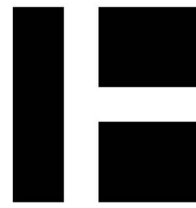
KEYNOTES	
Key Tag	Description
01	MATCH EXG WOOD WALL BASE
02	MATCH EXG WOOD WAINSCOT
03	PROVIDE NEW PLASTER SKIMCOAT. SEE A71 SERIES FOR EXTENTS
04	PROVIDE NEW MASONRY PATCHING AT MECHANICAL REMOVAL
05	VERTICAL LADDER TO ROOF SCUTTLE
06	PROVIDE NEW GYPSUM BOARD PATCHING AT REMOVED WALL/EQUIPMENT
07	PROVIDE NEW FLOOR PATCHING AND LEVELING
08	ALIGN FACE OF PARTITIONS TYPICAL
09	INFILL FLOOR OPENING - SEE STRUCTURAL
10	PATCH SUBFLOOR WHERE WALLS WERE REMOVED
11	NEW ACCESS PANEL
12	TRANSLUCENT GLAZING FILM TO BE APPLIED TO INSIDE FACE OF WINDOW



**A2** FIRST FLOOR PLAN  
SCALE: 1/8" = 1'-0"

- GENERAL NOTES**
- INTERIOR PARTITION DIMENSIONS ARE TO FACE OF FINISH OF PARTITION FROM COLUMN CENTER LINE UNLESS OTHERWISE NOTED.
  - OWNER TO RELOCATE ALL LOOSE FURNITURE.
  - ALL EQUIPMENT TO BE SUPPLIED BY OWNER. INSTALLED BY GC. G.C. TO COORDINATE OPENINGS WITH OWNER SUPPLIED EQUIPMENT.
  - SEE A71 SERIES FOR FLOOR MATERIALS PLANS.
- SYMBOLS LEGEND**
- |                  |   |
|------------------|---|
| <b>ROOM NAME</b> | ROOM NAME AND NUMBER                                  |
| [101]            | [101] ROOM NAME AND NUMBER                            |
| (201)            | DOOR & INTERIOR STOREFRONT TAGS - SEE A60-1 AND A60-2 |
| (72)             | MISCELLANEOUS ITEMS MARKER SEE SCHEDULE ON A71-1      |
| [216]            | PARTITION TYPES - SEE LEGEND ON A40-1                 |
| (60)             | BORROWED LITE TAG - SEE A60-1                         |





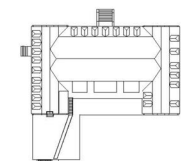
HARRIMAN

UNH ID: 2013-1155  
HUDDLESTON HALL  
LIFE SAFETY  
IMPROVEMENTS

73 MAIN STREET  
DURHAM, NEW HAMPSHIRE

Harriman Project No. 21257

Key Plan Proj North



PROGRESS

8/17/2022 12:33:58 PM

Rev Date Revision Description

Rev Date	Revision Description

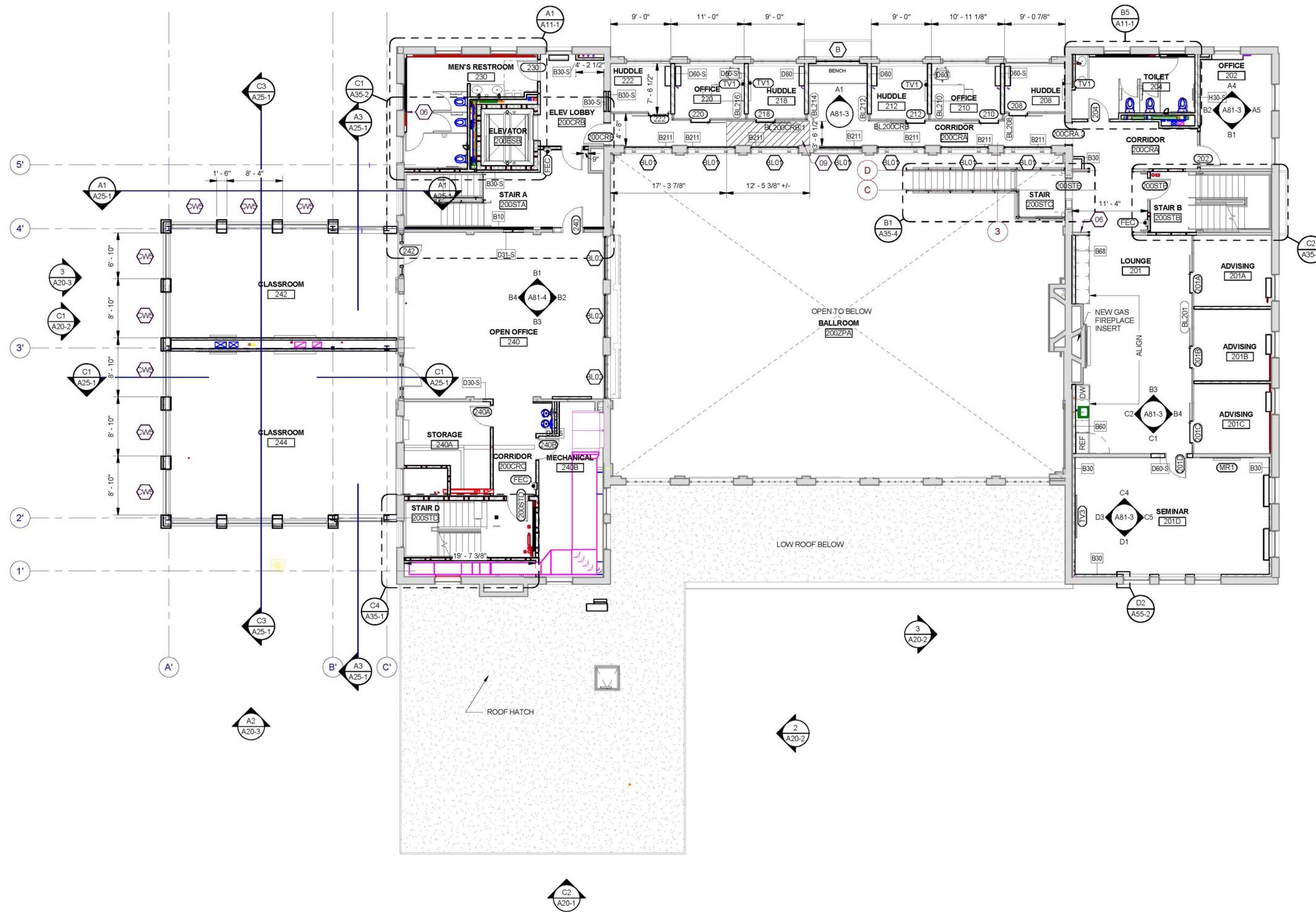
PRELIMINARY  
NOT FOR  
CONSTRUCTION

PA / PE: MDL  
Drawn By: SAA

SECOND FLOOR PLAN

A3

KEYNOTES	
Key Tag	Description
01	MATCH EXG WOOD WALL BASE
02	MATCH EXG WOOD WAINSCOT
03	PROVIDE NEW PLASTER SKIMCOAT. SEE A71 SERIES FOR EXTENTS
04	PROVIDE NEW MASONRY PATCHING AT MECHANICAL REMOVAL
05	VERTICAL LADDER TO ROOF SCUTTLE
06	PROVIDE NEW GYPSUM BOARD PATCHING AT REMOVED WALL EQUIPMENT
07	PROVIDE NEW FLOOR PATCHING AND LEVELING
08	ALIGN FACE OF PARTITIONS TYPICAL
09	INFILL FLOOR OPENING - SEE STRUCTURAL
10	PATCH SUBFLOOR WHERE WALLS WERE REMOVED
11	NEW ACCESS PANEL
12	TRANSLUCENT GLAZING FILM TO BE APPLIED TO INSIDE FACE OF WINDOW



A2 SECOND FLOOR PLAN  
SCALE: 1/8" = 1'-0"

GENERAL NOTES

- INTERIOR PARTITION DIMENSIONS ARE TO FACE OF FINISH OF PARTITION FROM COLUMN CENTERLINE UNLESS OTHERWISE NOTED
- OWNER TO RELOCATE ALL LOOSE FURNITURE
- ALL EQUIPMENT TO BE SUPPLIED BY OWNER. INSTALLED BY GC. G.C. TO COORDINATE OPENINGS WITH OWNER SUPPLIED EQUIPMENT.
- SEE A71 SERIES FOR FLOOR MATERIALS PLANS.

SYMBOLS LEGEND

ROOM NAME	ROOM NAME AND NUMBER
101	ROOM NAME AND NUMBER
201	DOOR & INTERIOR STOREFRONT TAGS - SEE A60-1 AND A60-2
72	MISCELLANEOUS ITEMS MARKER SEE SCHEDULE ON A71-1
216	PARTITION TYPES - SEE LEGEND ON A40-1
EL0	BORROWED LITE TAG - SEE A60-1







