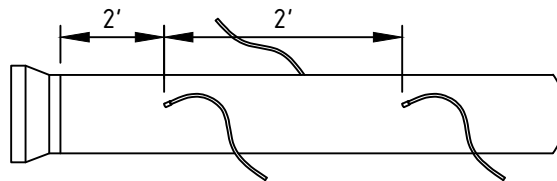


24" MINIMUM SEPARATION BETWEEN SERVICE TAPS OR FROM A BELL



TRACER WIRE SHALL BE PLACED OVER ALL SERVICES THAT ARE NON-METALLIC SEE DETAIL W-15

CHECKED BY:
AT

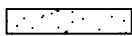
APPROVED BY:
RR



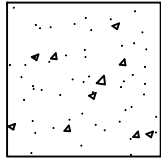
Town of Durham Engineering Division

WATER MAIN/SERVICE TRENCH

SECTION:	WATER
DWG #:	W-1
DATE:	JAN 2022
PAGE:	15

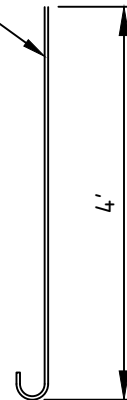


4"x16" CONCRETE SLAB OR
LARGE FLAT ROCK UNDER SHOE



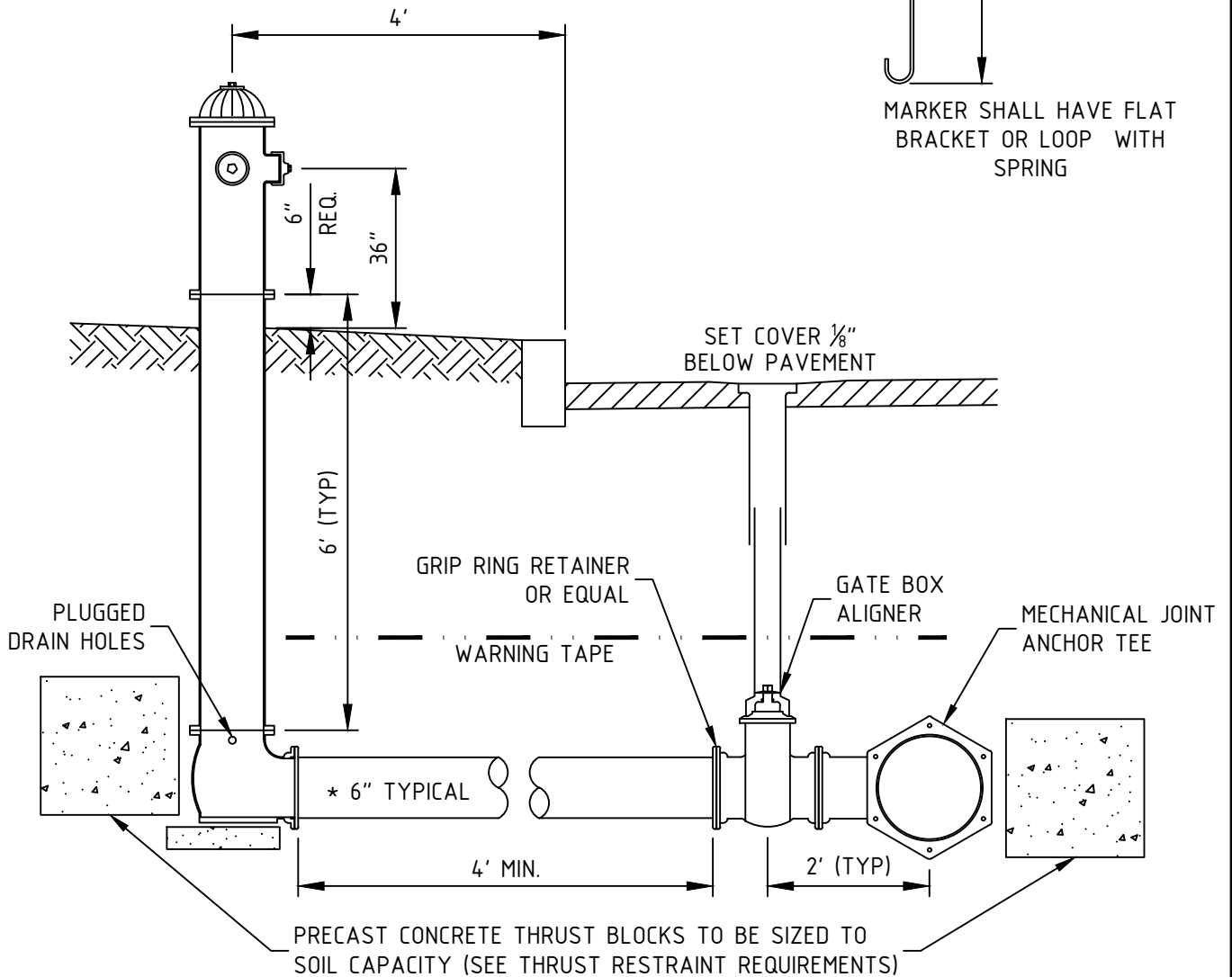
PRECAST CONCRETE THRUST
BLOCK WITH CABLE HITCH 2'x2'

FIBERGLASS
HYDRANT
MARKERS WITH
REFLECTIVE
BANDS



MARKER SHALL HAVE FLAT
BRACKET OR LOOP WITH
SPRING

HYDRANT SHALL BE OPEN LEFT
MUELLER OR AS DIRECTED BY
WATER FOREMAN



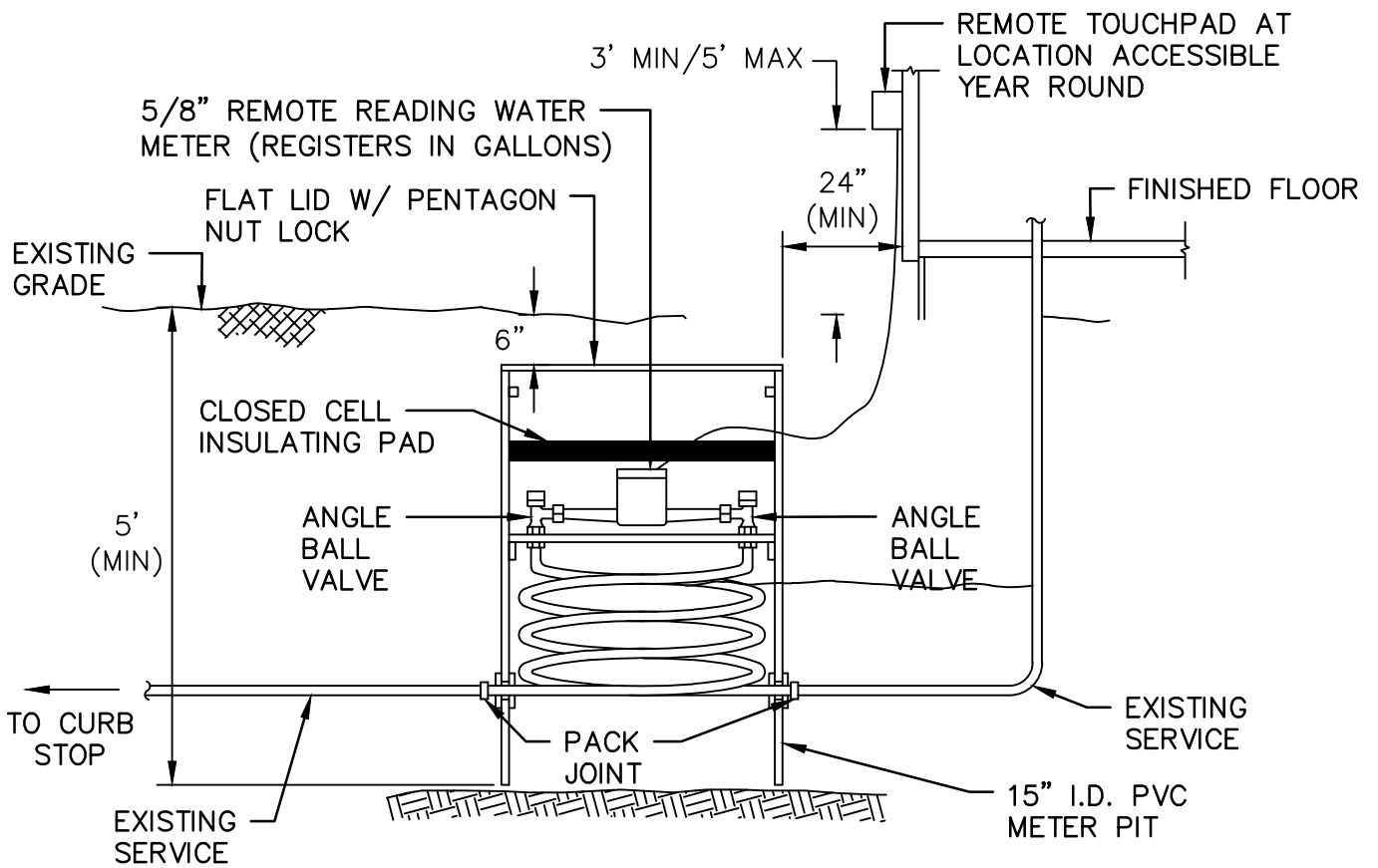
* SHOULD THE HYDRANT BE MORE THAN 20' FROM THE MAIN, THE
HYDRANT SERVICE SHALL BE 8" TO A POINT IMMEDIATELY ADJACENT
TO THE HYDRANT WHERE THE SERVICE WILL BE REDUCED TO 6"

CHECKED BY:
AT
APPROVED BY:
RR



Town of Durham Engineering Division
FIRE HYDRANT

SECTION: WATER
DWG #: W-2
DATE: JAN 2022 PAGE: 14



NOTES:

1. METER PIT SHALL BE REQUIRED AS DIRECTED BY THE TOWN ENGINEER AND/OR DIRECTOR OF PUBLIC WORKS WHEN WATER SERVICE LENGTH IS 150 FT OR MORE.
2. METER PIT SHALL BE LOCATED IN AREA AWAY FROM VEHICLE TRAFFIC.

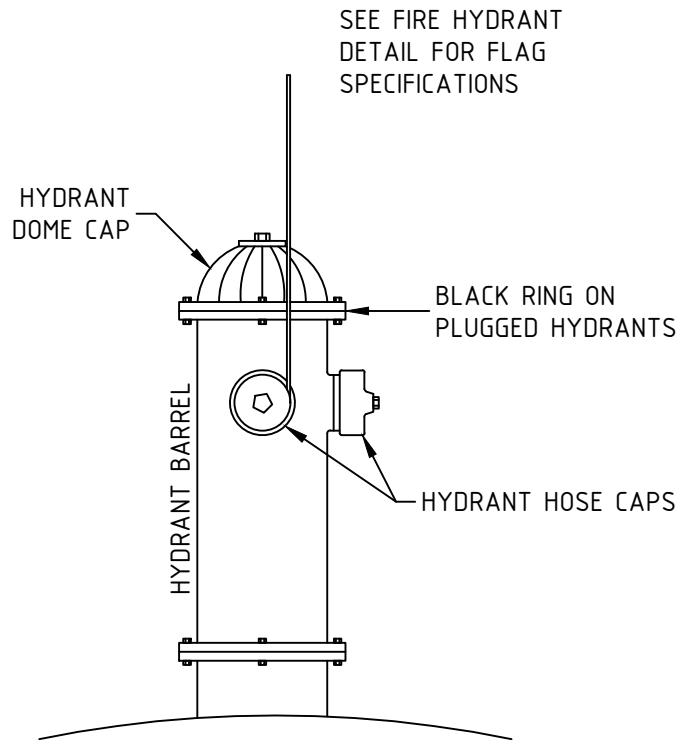
CHECKED BY:
AT
APPROVED BY:
RR



Town of Durham Engineering Division

**RESIDENTIAL METER PIT
DETAIL**

SECTION:	WATER
DWG #:	W-4A
DATE:	JAN 2022
PAGE:	99



HYDRANT PAINTING

SERVICE PRESSURE	HYDRANT BARREL	HYDRANT DOME CAP	HYDRANT HOSE CAPS
HIGH PRESSURE	GLOSS YELLOW	WHITE	GLOSS YELLOW

NOTES:

1. THE CONTRACTOR/DEVELOPER SHALL BE RESPONSIBLE FOR THE PAINTING OF THE HYDRANTS.

CHECKED BY:

AT

APPROVED BY:

RR



Town of Durham Engineering Division

HYDRANT PAINTING &
MARKER FLAGS

SECTION:

WATER

DWG #:

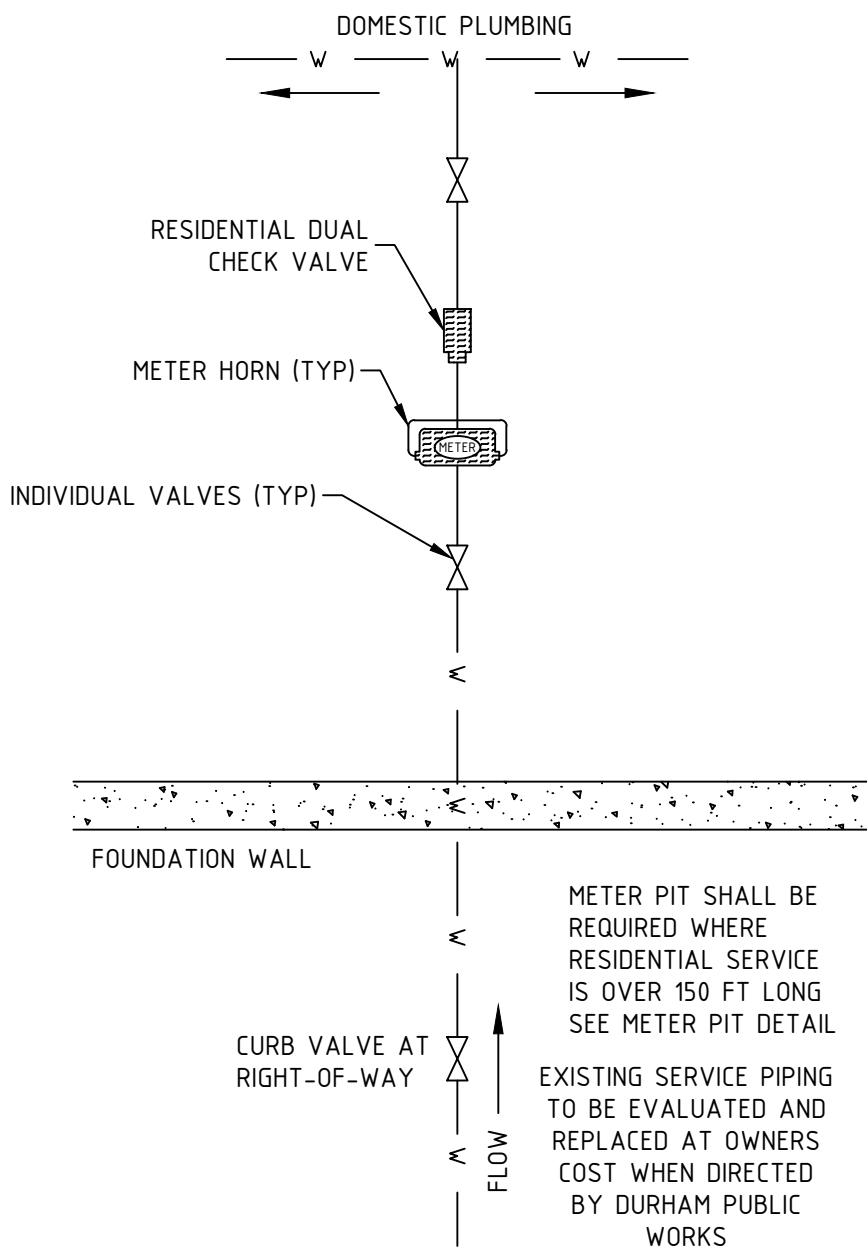
W-3

DATE:

JAN 2022

PAGE:

13



NOTE: ALL METERS 1 INCH OR LESS SHALL BE SUPPLIED BY TOWN OF DURHAM WATER DEPARTMENT

CHECKED BY:
AT

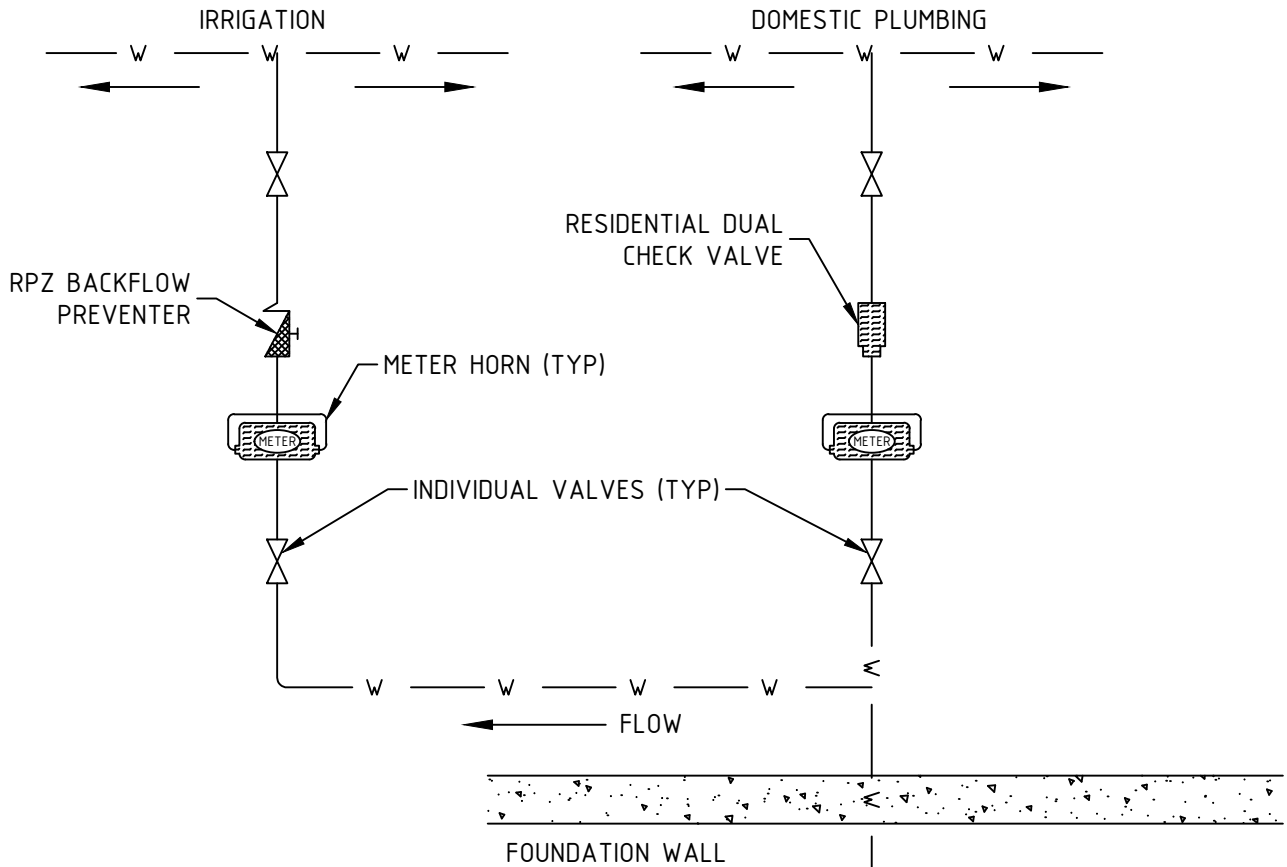
APPROVED BY:
RR



Town of Durham Engineering Division

SINGLE FAMILY METER INSTALLATION

SECTION:		WATER	
DWG #:		W-4	
DATE:	JAN 2022	PAGE:	12



NOTE: ALL METERS 1 INCH OR LESS SHALL BE SUPPLIED BY TOWN OF DURHAM WATER DEPARTMENT

METER PIT SHALL BE REQUIRED WHERE RESIDENTIAL SERVICE IS OVER 150 FT LONG SEE METER PIT DETAIL

CURB VALVE AT RIGHT-OF-WAY

↑ FLOW

EXISTING SERVICE PIPING TO BE EVALUATED AND REPLACED AT OWNERS COST WHEN DIRECTED BY DURHAM PUBLIC WORKS

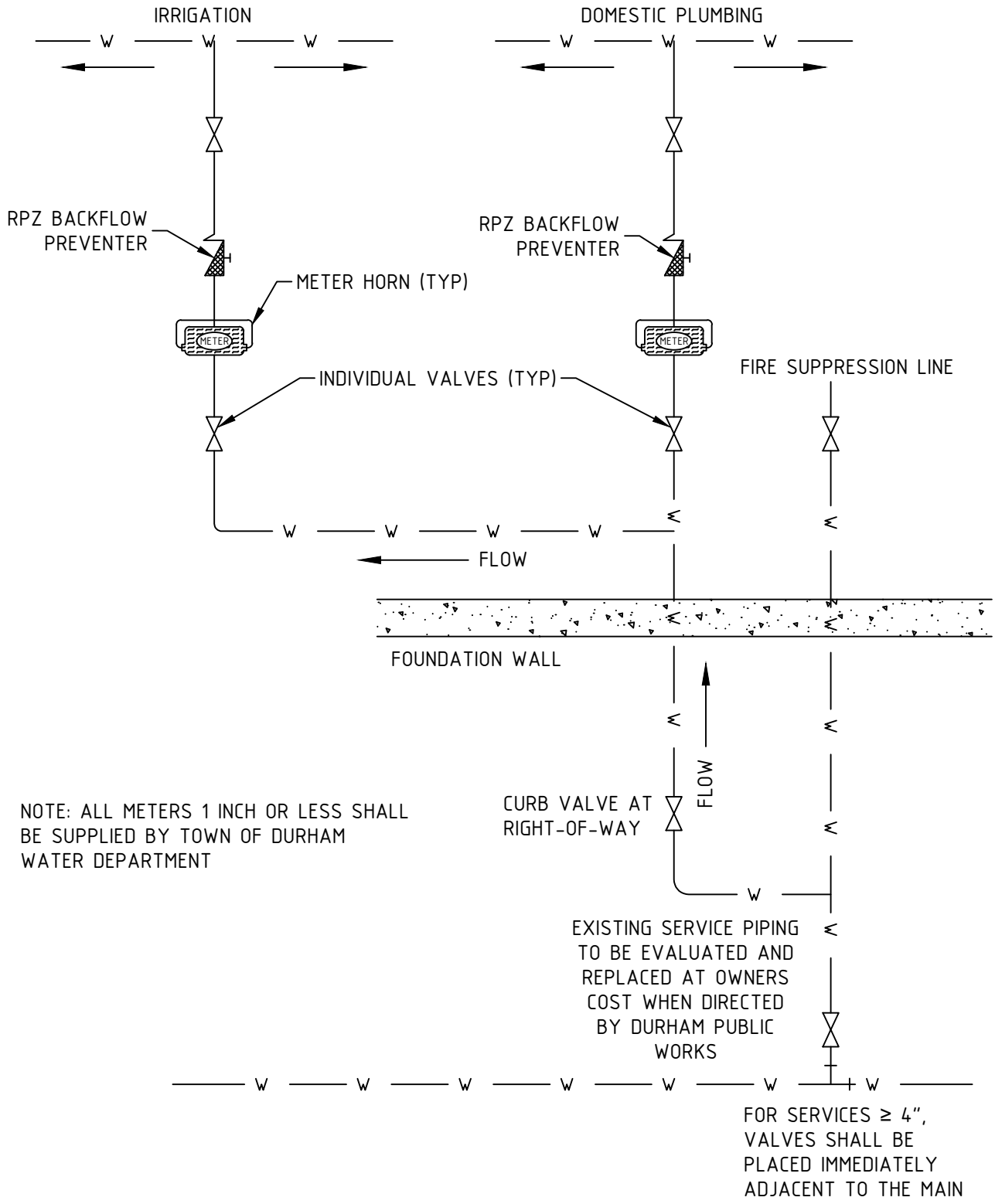
CHECKED BY:
AT
APPROVED BY:
RR



Town of Durham Engineering Division

RESIDENTIAL METER
INSTALLATION WITH IRRIGATION

SECTION:	WATER
DWG #:	W-5
DATE:	JAN 2022
PAGE:	11



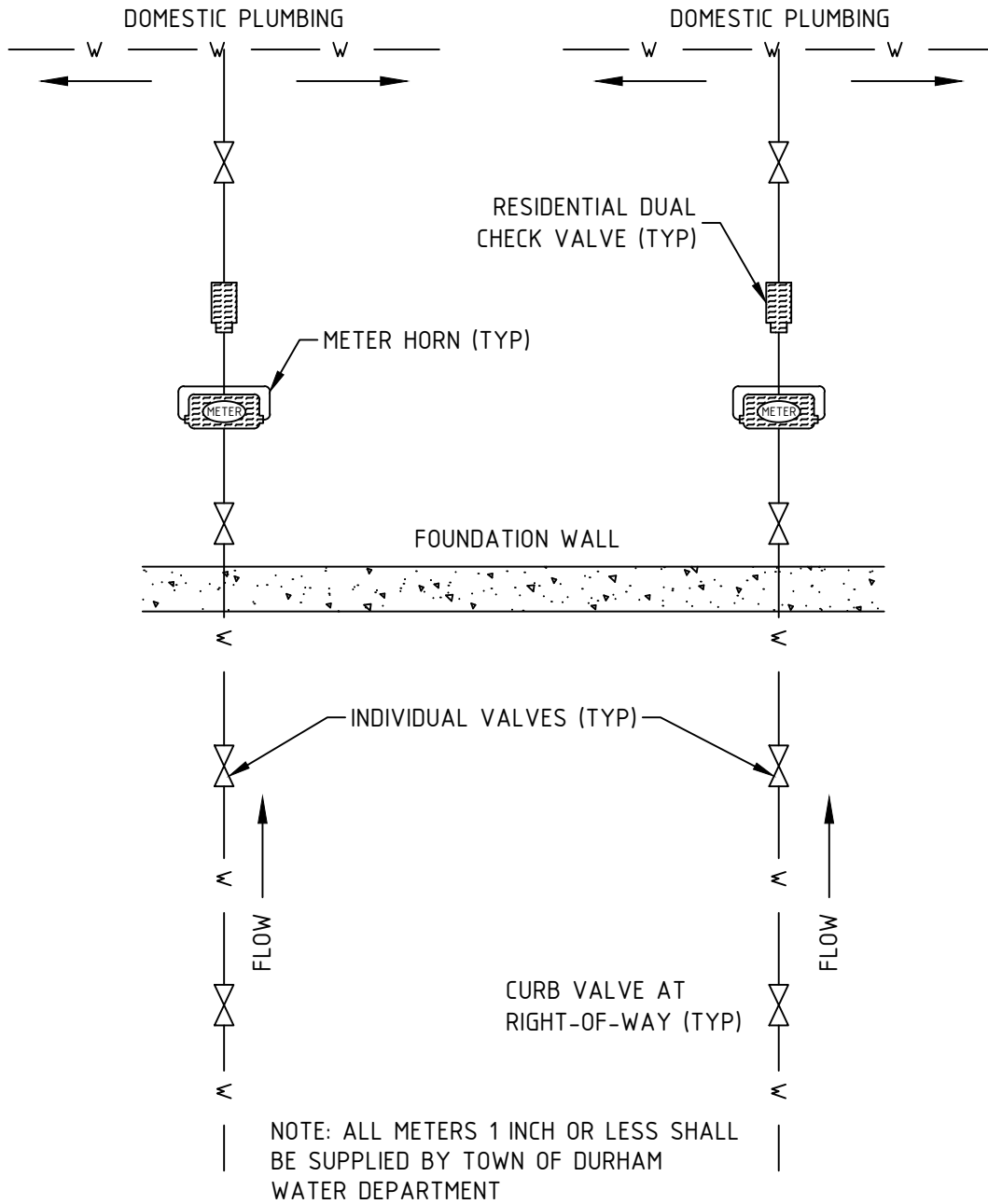
NOTE: ALL METERS 1 INCH OR LESS SHALL BE SUPPLIED BY TOWN OF DURHAM WATER DEPARTMENT

CURB VALVE AT RIGHT-OF-WAY

EXISTING SERVICE PIPING TO BE EVALUATED AND REPLACED AT OWNERS COST WHEN DIRECTED BY DURHAM PUBLIC WORKS

FOR SERVICES $\geq 4"$, VALVES SHALL BE PLACED IMMEDIATELY ADJACENT TO THE MAIN

CHECKED BY: AT		Town of Durham Engineering Division		SECTION: WATER	
		METER INSTALLATION WITH IRRIGATION AND FIRE SUPPRESSION		DWG #: W-6	
APPROVED BY: RR			DATE: JAN 2022	PAGE: 10	



CHECKED BY:
AT

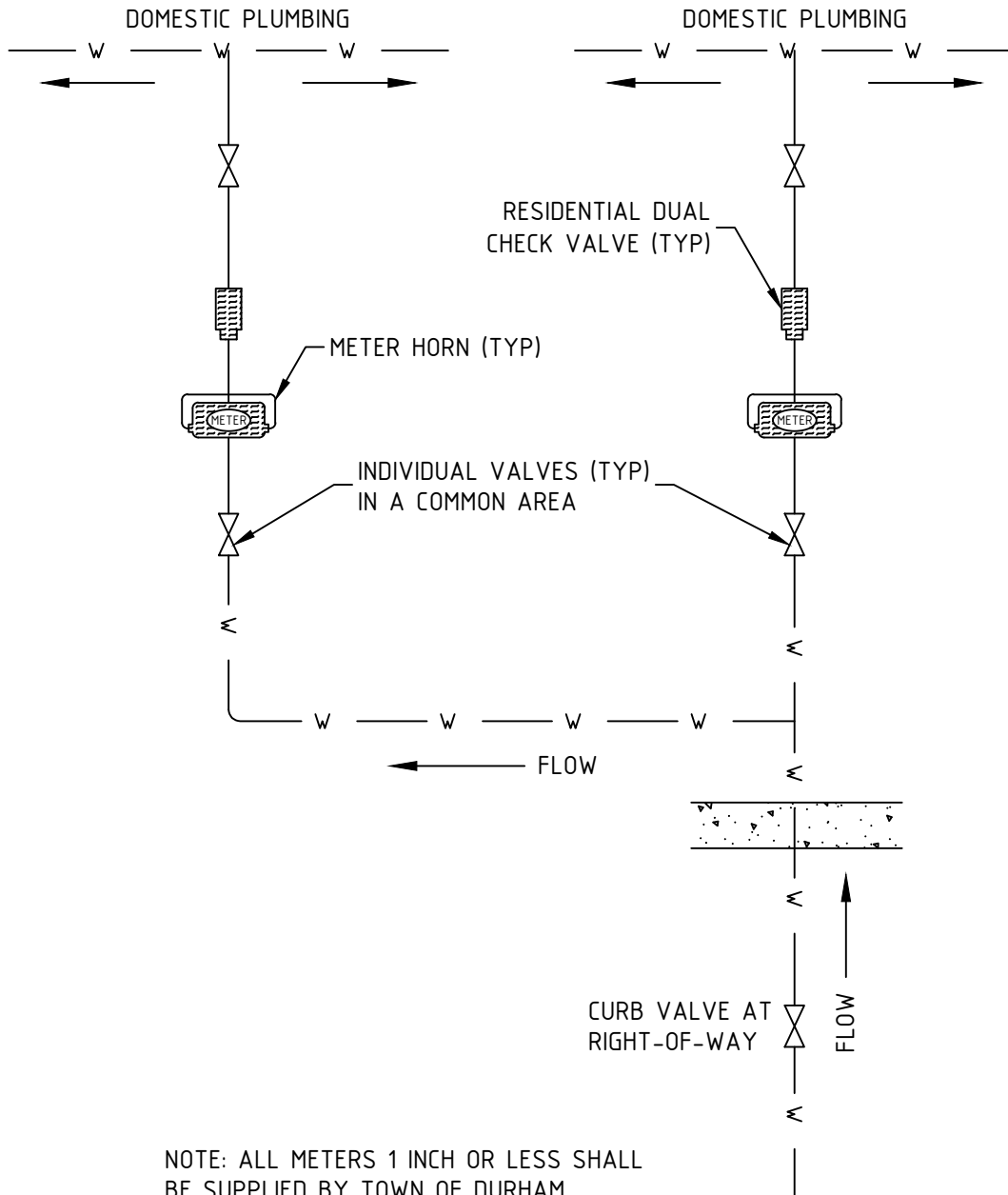
APPROVED BY:
RR



Town of Durham Engineering Division

**NEW CONDOMINIUM DUAL
RESIDENTIAL METER INSTALLATION**

SECTION:		WATER	
DWG #:		W-7	
DATE:	JAN 2022	PAGE:	9



NOTE: ALL METERS 1 INCH OR LESS SHALL
BE SUPPLIED BY TOWN OF DURHAM
WATER DEPARTMENT

CHECKED BY:

AT

APPROVED BY:

RR



Town of Durham Engineering Division

CONDO CONVERSION DUAL
RESIDENTIAL METER INSTALLATION

SECTION:

WATER

DWG #:

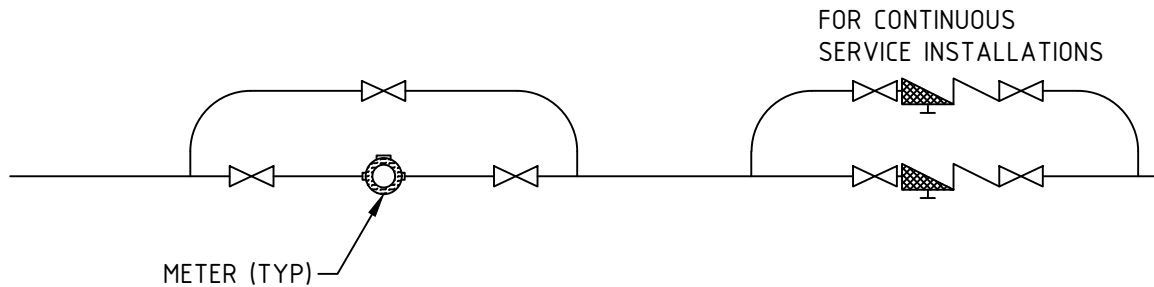
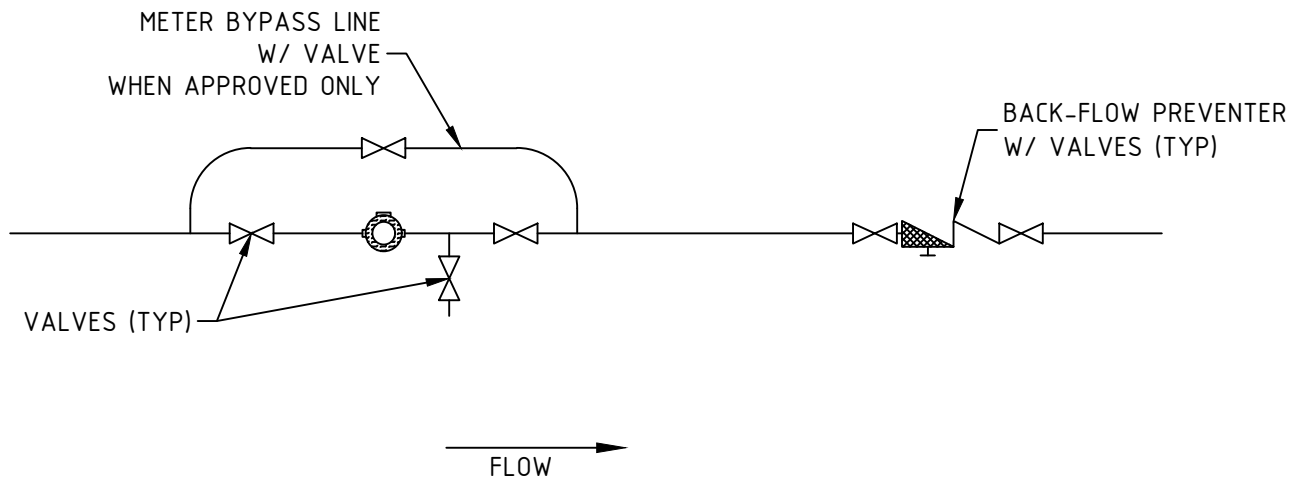
W-8

DATE:

JAN 2022

PAGE:

8



ON ALL WATER SERVICES WITH A METER SIZE OF 1½" OR LARGER, A BYPASS LINE WITH A 2" TEST OUTLET WHEN APPROVED ONLY.

NO OBSTRUCTIONS ARE ALLOWED:

BEFORE THE METER	5 x D
BEFORE A METER WITH STRAINER	3 x D
AFTER THE METER	2 x D

WHERE D = PIPE DIAMETER

LAYING LENGTH OF METERS:

5/8" x 3/4"	= 7½"
1" x ____	= 10¾"
1½" x ____	= 13"
2" x ____	= 17"
3" TURBO x ____	= 16"
TURBO x ____	= 14"

NOTE: ALL METERS 1 INCH OR LESS SHALL BE SUPPLIED BY TOWN OF DURHAM WATER DEPARTMENT

CHECKED BY:

AT

APPROVED BY:

RR



Town of Durham Engineering Division

WATER METER
INSTALLATION

SECTION:

WATER

DWG #:

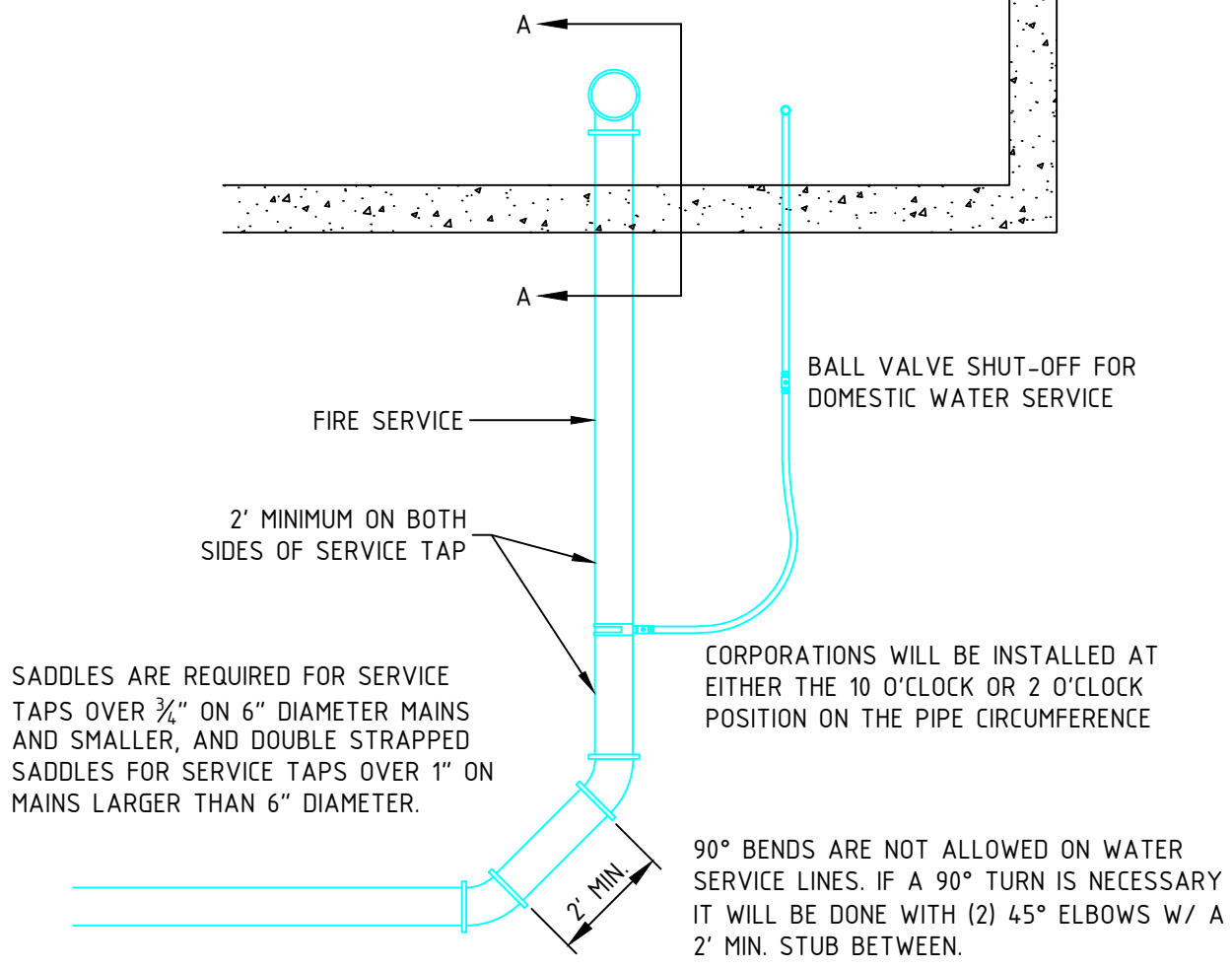
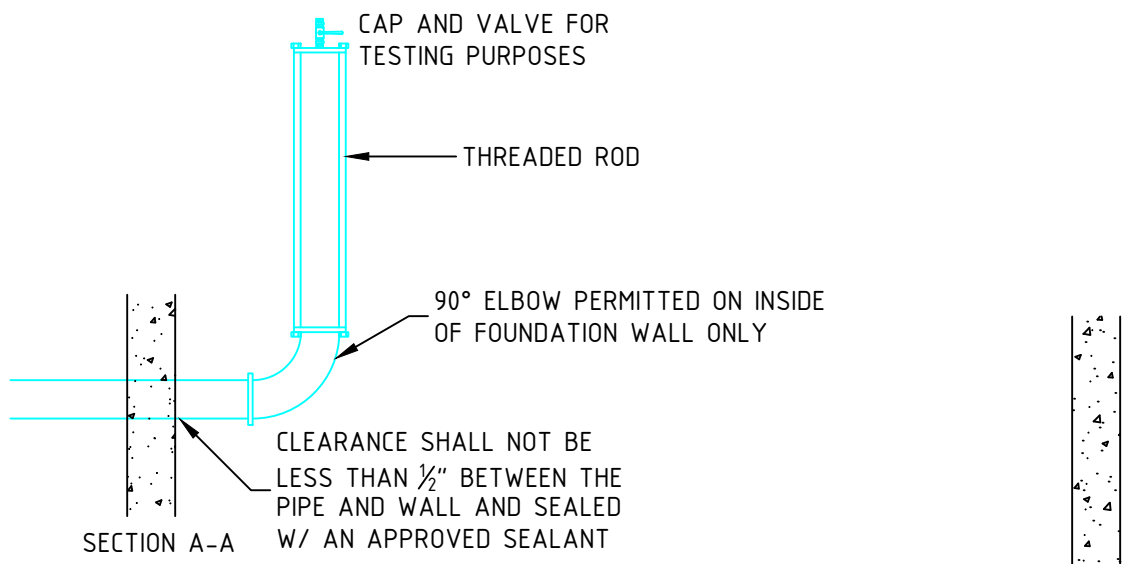
W-9

DATE:

JAN 2022

PAGE:

7



SADDLES ARE REQUIRED FOR SERVICE TAPS OVER $\frac{3}{4}$ " ON 6" DIAMETER MAINS AND SMALLER, AND DOUBLE STRAPPED SADDLES FOR SERVICE TAPS OVER 1" ON MAINS LARGER THAN 6" DIAMETER.

CHECKED BY:
RR

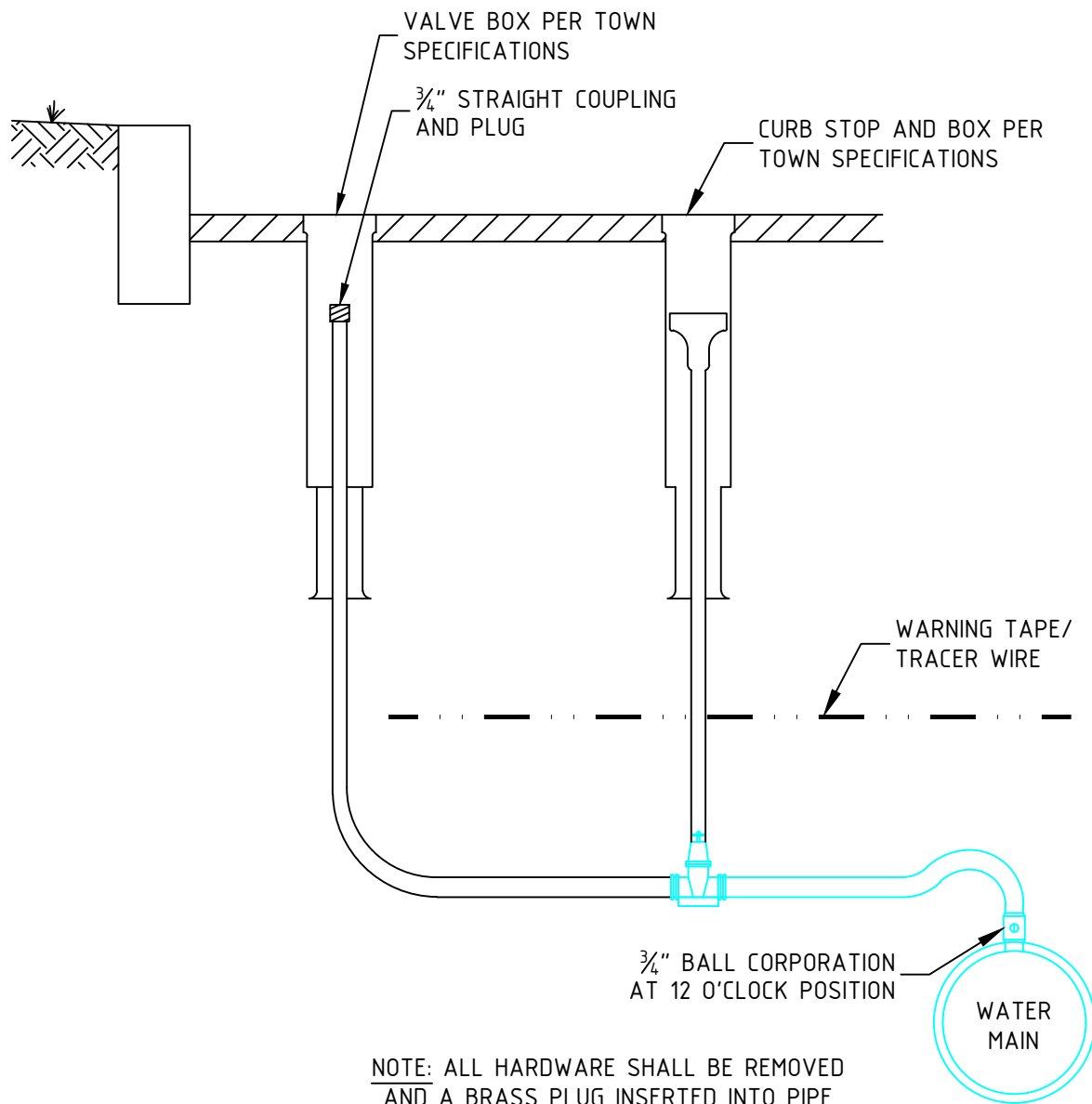
APPROVED BY:
RR



Town of Durham Engineering Division

WATER SERVICE THROUGH FOUNDATION

SECTION:		WATER	
DWG #:		W-10	
DATE:	JAN 2022	PAGE:	6



NOTE: ALL HARDWARE SHALL BE REMOVED AND A BRASS PLUG INSERTED INTO PIPE
 *WHEN REQUIRED BY DURHAM PUBLIC WORKS

CHECKED BY:

AT

APPROVED BY:

RR



Town of Durham Engineering Division

AIR RELEASE VALVE
 (FOR TESTING PURPOSES ONLY)

SECTION:

WATER

DWG #:

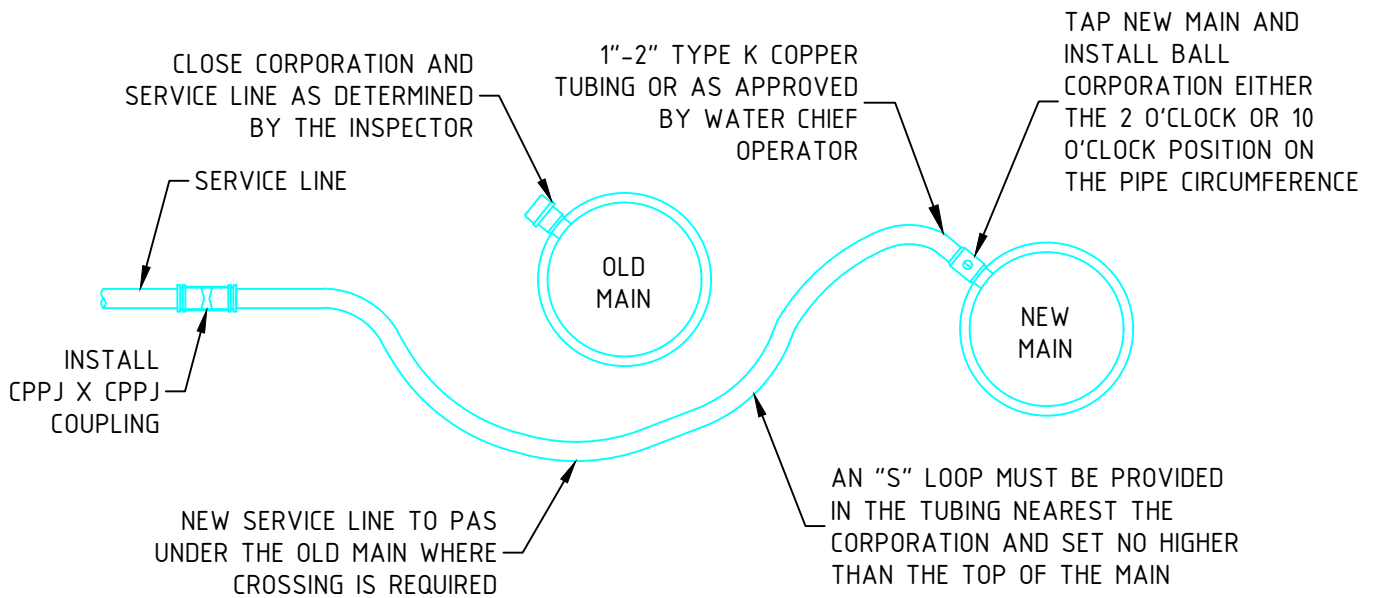
W-11

DATE:

JAN 2022

PAGE:

5



NOTE: DO NOT TIE OVER THE UNUSED OR ABANDONED SERVICES

CHECKED BY:
AT

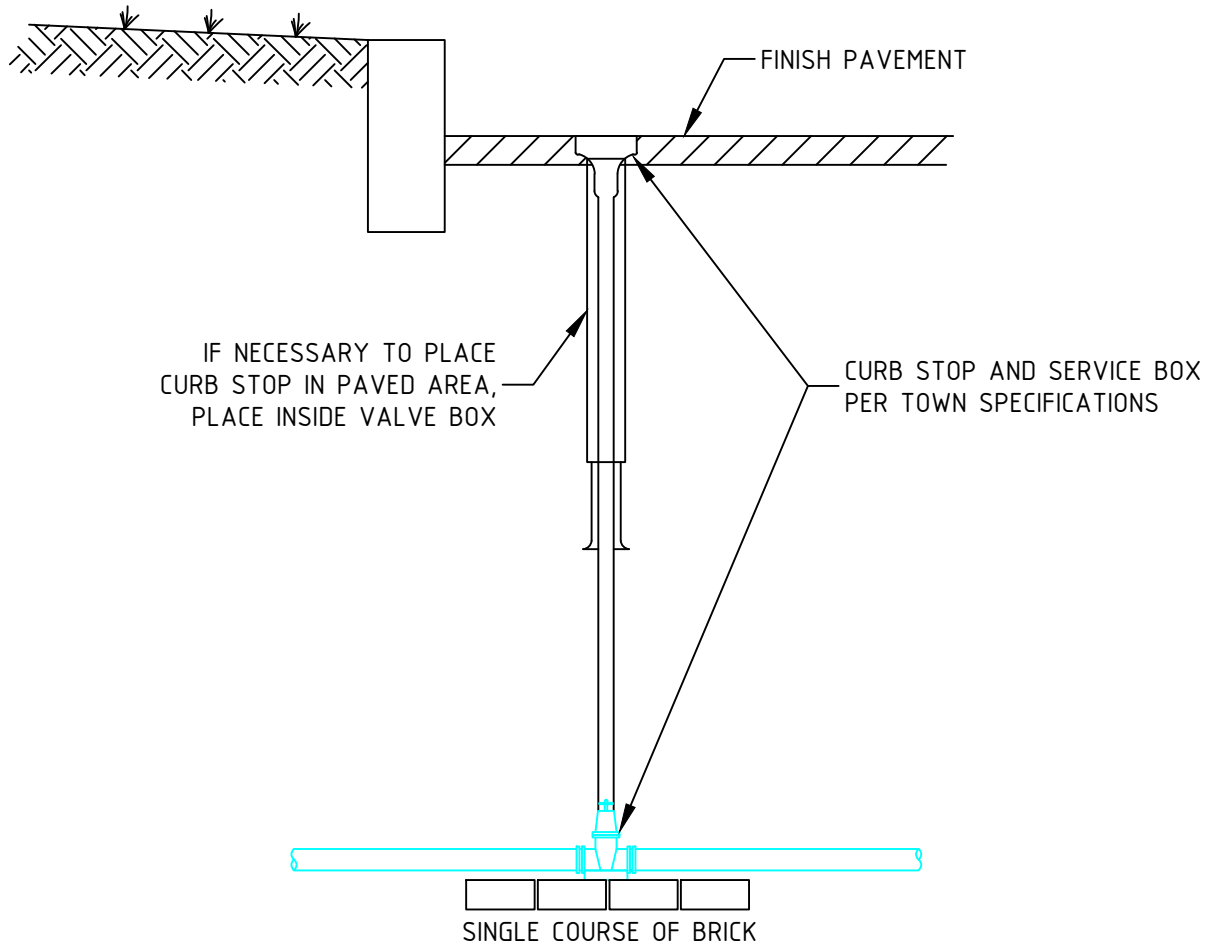
APPROVED BY:
RR



Town of Durham Engineering Division

WATER SERVICE TIE OVER

SECTION:	WATER
DWG #:	W-12
DATE:	JAN 2022
PAGE:	4



CHECKED BY:

AT

APPROVED BY:

RR



Town of Durham Engineering Division

CURB STOP IN PAVEMENT

SECTION:

WATER

DWG #:

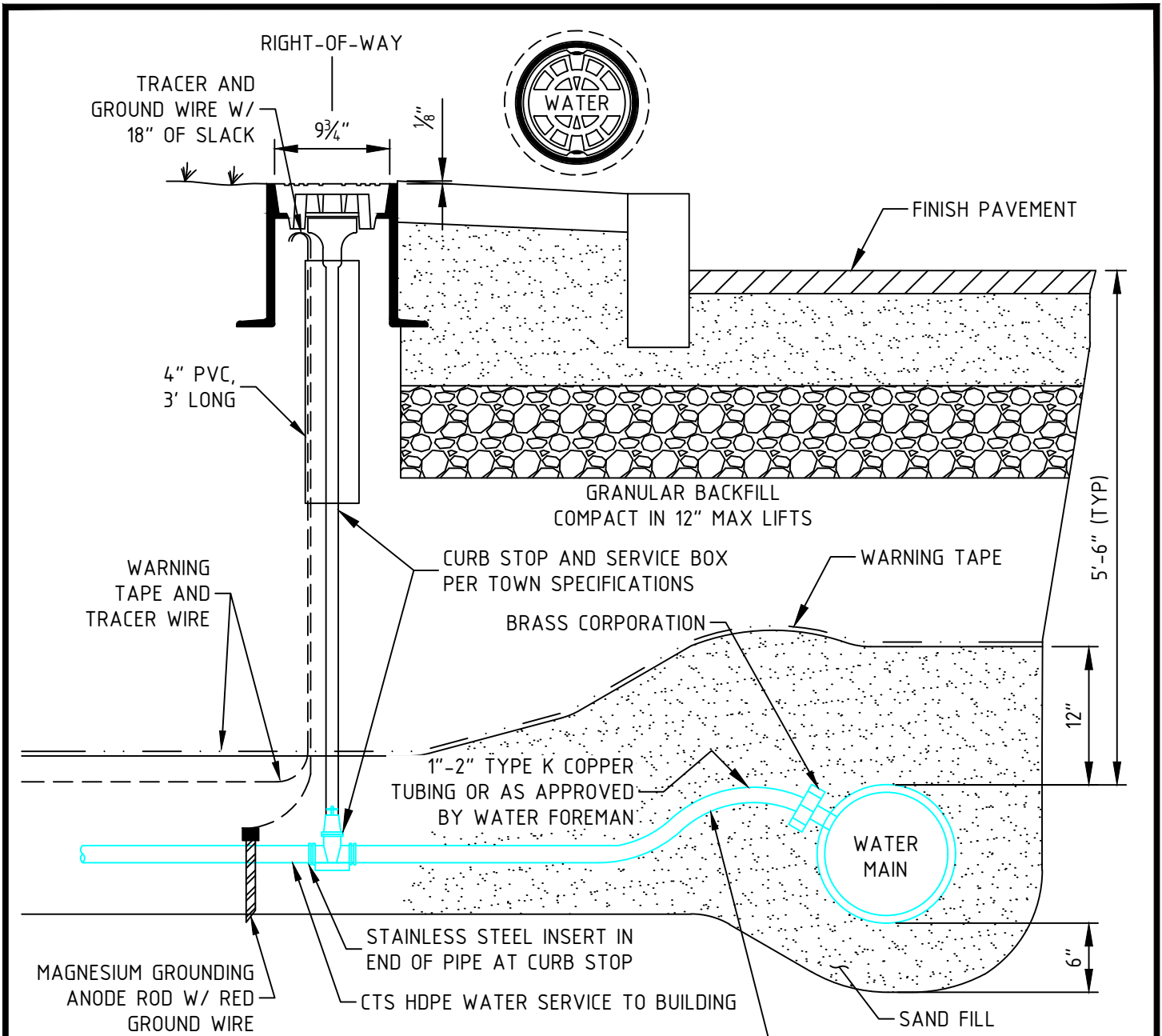
W-13

DATE:

JAN 2022

PAGE:

3



LOCATOR BOX:

1. LOCATOR BOX AND COVER SHALL BE CAST IRON.
2. LOCATOR BOXES SHALL BE SET AT 500' INTERVALS AND AT BENDS.
3. PROVIDE 18" WIRE LOOP INSIDE THE LOCATOR BOX.
4. LOCATOR BOXES SHALL BE SET AT GRADE IN CROSS COUNTRY LOCATIONS AND 1/8" BELOW PAVEMENT, TAPERED OVER 2'.

TRACER WIRE:

1. CONTINUOUS, DIRECT BURIAL RATED.
2. 12 AWG HIGH STRENGTH SOLID CORE COPPER CLAD STEEL.
3. COATING COLOR SHALL CONFORM TO THE APWA UNIFORM COLOR CODE.

REPAIRS:

1. SPLICES SHALL BE MADE WITH CORROSION PROOF, LOCKABLE WIRE CONNECTORS.

TAP MAIN AND LAY COPPER TUBING PER THE WATER SERVICE TIE OVER DETAIL

CHECKED BY: AT		Town of Durham Engineering Division	SECTION: UTILITIES
APPROVED BY: RR		WATER SERVICE INSTALLATION WITH TRACER WIRE	DWG #: W-15
			DATE: JAN 2022