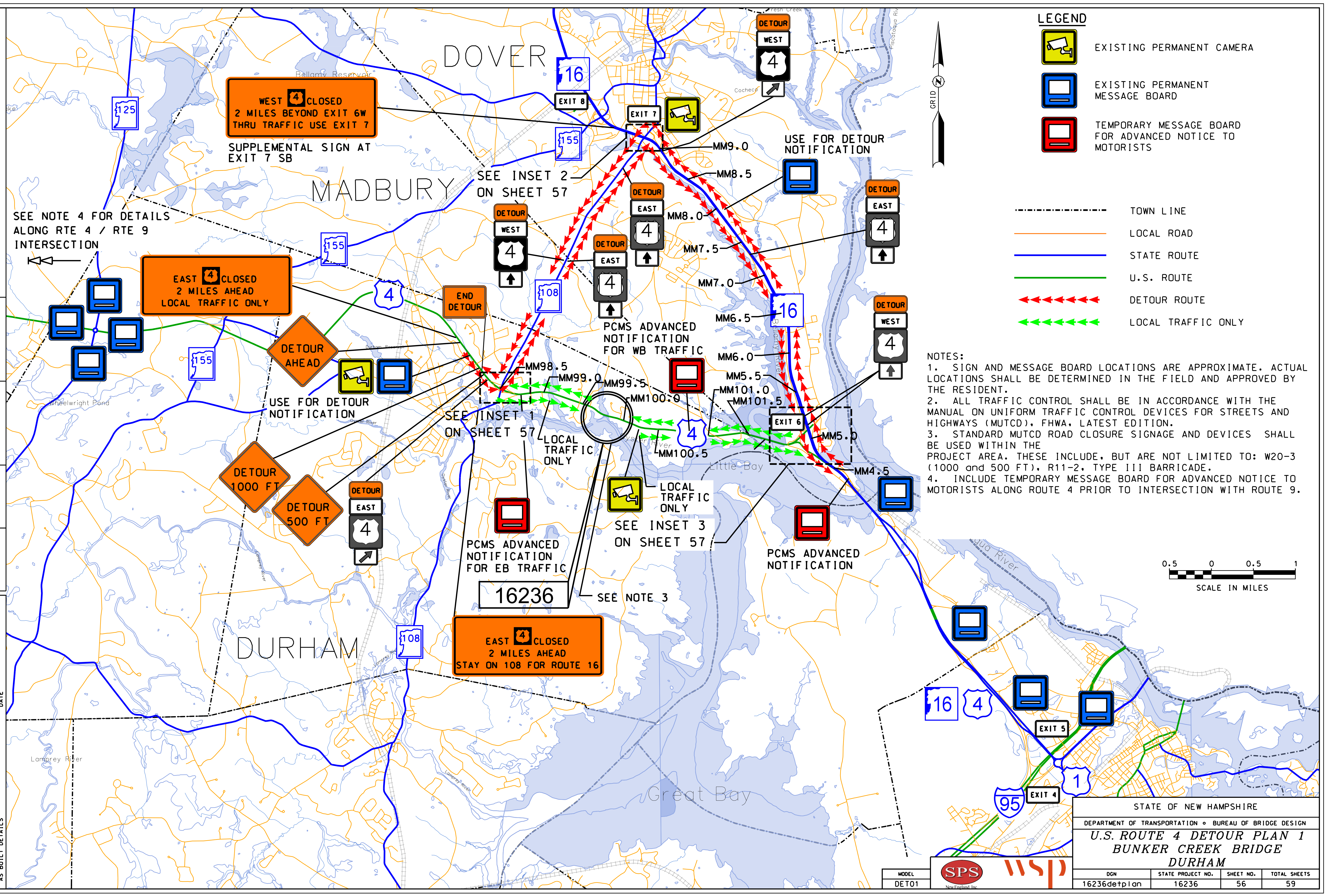


REVISIONS AFTER PROPOSAL
 STATION
 STATION
 DATE
 NUMBER
 DATE
 SOR PROCESSED
 NEW DESIGN
 SHEET CHECKED
 AS BUILT DETAILS
 DATE XX
 R. BENJAMIN
 R. BURCKARDT
 DATE 5-23-2019
 DATE 5-24-2019
 DATE



LEGEND

- EXISTING PERMANENT CAMERA
- EXISTING PERMANENT MESSAGE BOARD
- TEMPORARY MESSAGE BOARD FOR ADVANCED NOTICE TO MOTORISTS
- TOWN LINE
- LOCAL ROAD
- STATE ROUTE
- U.S. ROUTE
- DETOUR ROUTE
- LOCAL TRAFFIC ONLY

NOTES:

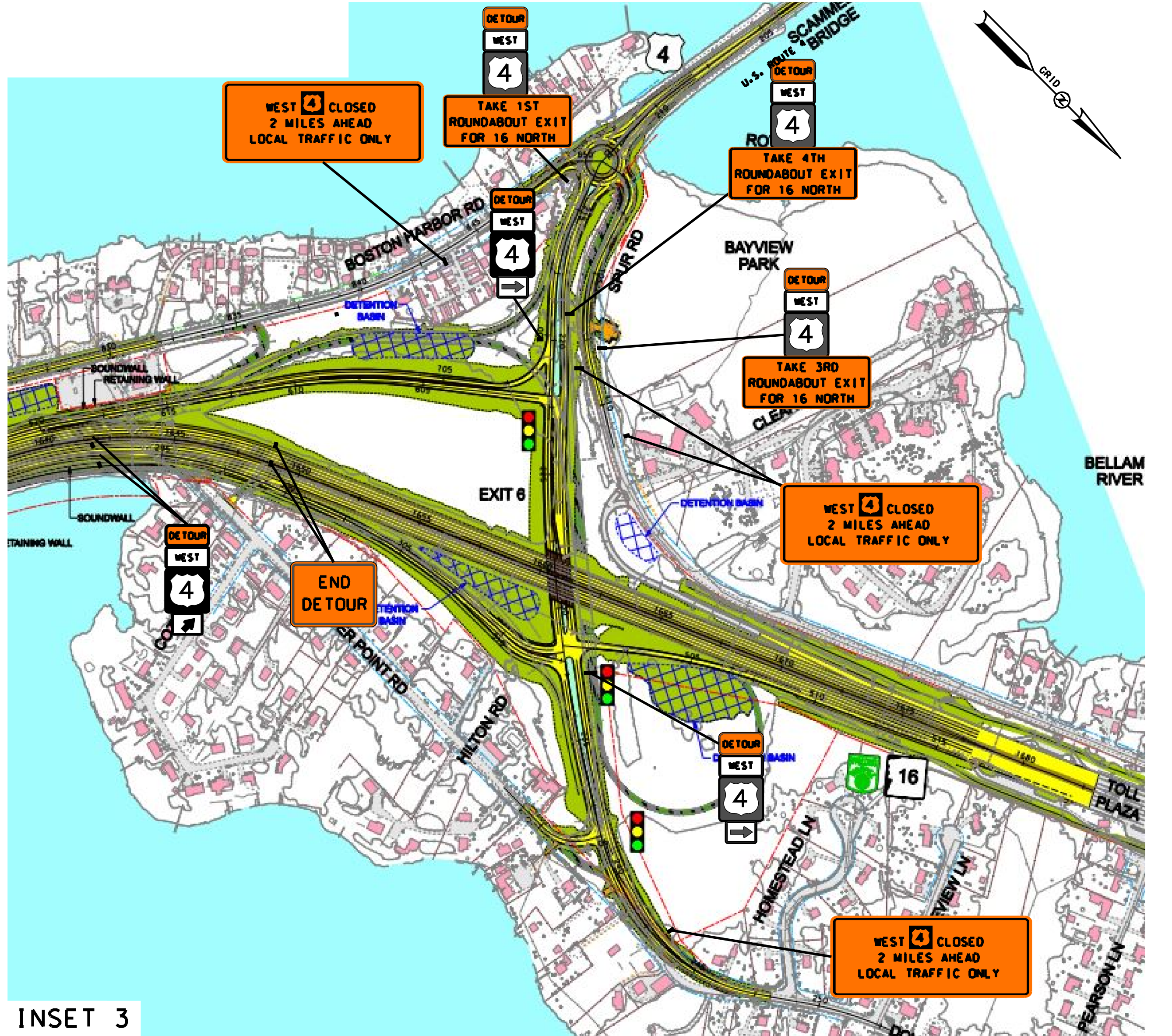
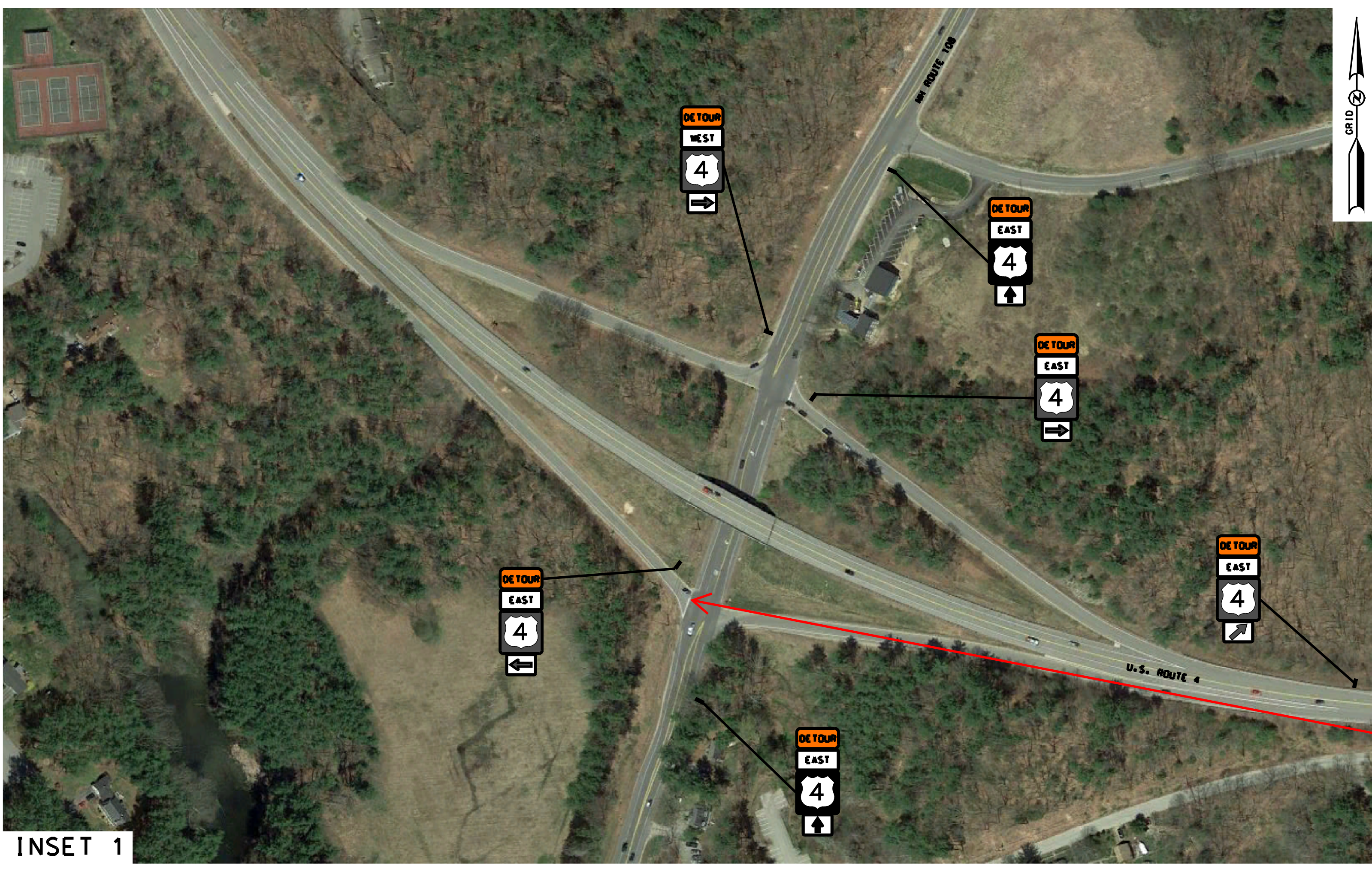
- SIGN AND MESSAGE BOARD LOCATIONS ARE APPROXIMATE. ACTUAL LOCATIONS SHALL BE DETERMINED IN THE FIELD AND APPROVED BY THE RESIDENT.
- ALL TRAFFIC CONTROL SHALL BE IN ACCORDANCE WITH THE MANUAL ON UNIFORM TRAFFIC CONTROL DEVICES FOR STREETS AND HIGHWAYS (MUTCD), FHWA, LATEST EDITION.
- STANDARD MUTCD ROAD CLOSURE SIGNAGE AND DEVICES SHALL BE USED WITHIN THE PROJECT AREA. THESE INCLUDE, BUT ARE NOT LIMITED TO: W20-3 (1000 and 500 FT), R11-2, TYPE III BARRICADE.
- INCLUDE TEMPORARY MESSAGE BOARD FOR ADVANCED NOTICE TO MOTORISTS ALONG ROUTE 4 PRIOR TO INTERSECTION WITH ROUTE 9.

STATE OF NEW HAMPSHIRE			
DEPARTMENT OF TRANSPORTATION • BUREAU OF BRIDGE DESIGN			
U.S. ROUTE 4 DETOUR PLAN 1			
BUNKER CREEK BRIDGE			
DURHAM			
DGN	STATE PROJECT NO.	SHEET NO.	TOTAL SHEETS
16236detplan	16236	56	59



MODEL
DETO1

SOR PROCESSED	DATE	XX	
	NEW DESIGN	R. BENJAMIN	DATE
SHEET CHECKED	DATE		
	AS BUILT DETAILS	R. BURCKARDT	DATE
REVISIONS AFTER PROPOSAL		STATION	DESCRIPTION
NUMBER		DATE	



In TCP for phase 3 detour be sure to address how increased traffic will be accommodated at the eastbound Rte. 4 off ramp at the intersection of Rte. 4 and Rte. 108.

NOT TO SCALE

STATE OF NEW HAMPSHIRE			
DEPARTMENT OF TRANSPORTATION • BUREAU OF BRIDGE DESIGN			
U.S. ROUTE 4 DETOUR PLAN 2			
BUNKER CREEK BRIDGE			
DURHAM			
DGN	STATE PROJECT NO.	SHEET NO.	TOTAL SHEETS
16236detp1an2	16236	57	59

MODEL
DET02