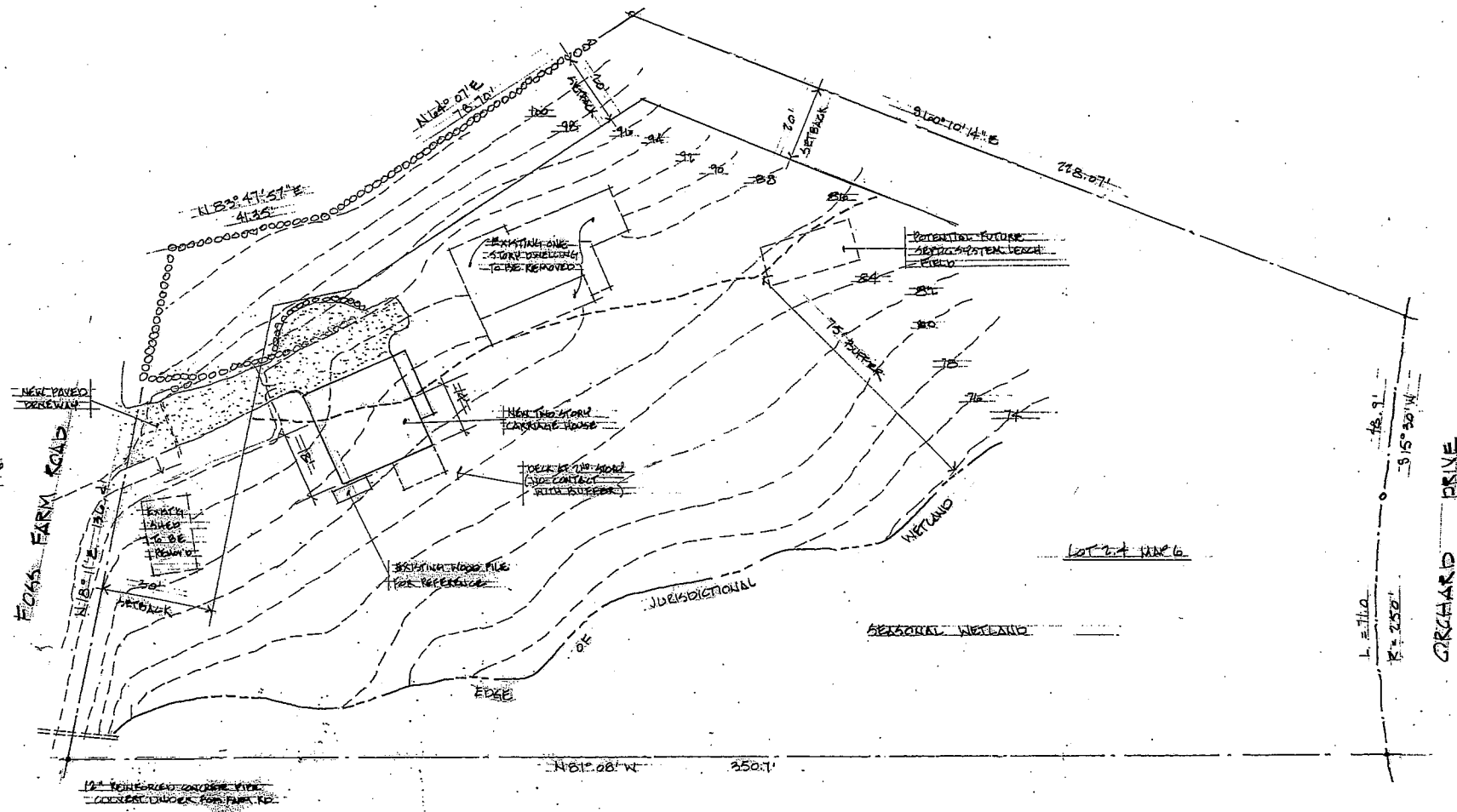


Lot 19 MAP 6
MICHAEL AND LUZEL HOGAN



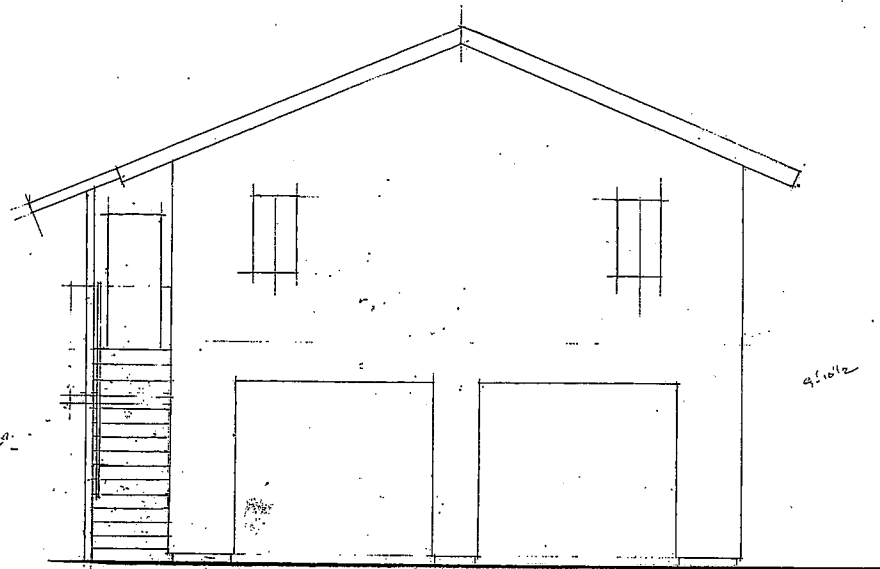
Lot 18 MAP 6
EUS GRADNER AND DAVID TROST

Lot 21 MAP 6
STEVEN WALKER AND MARIA BASTENA

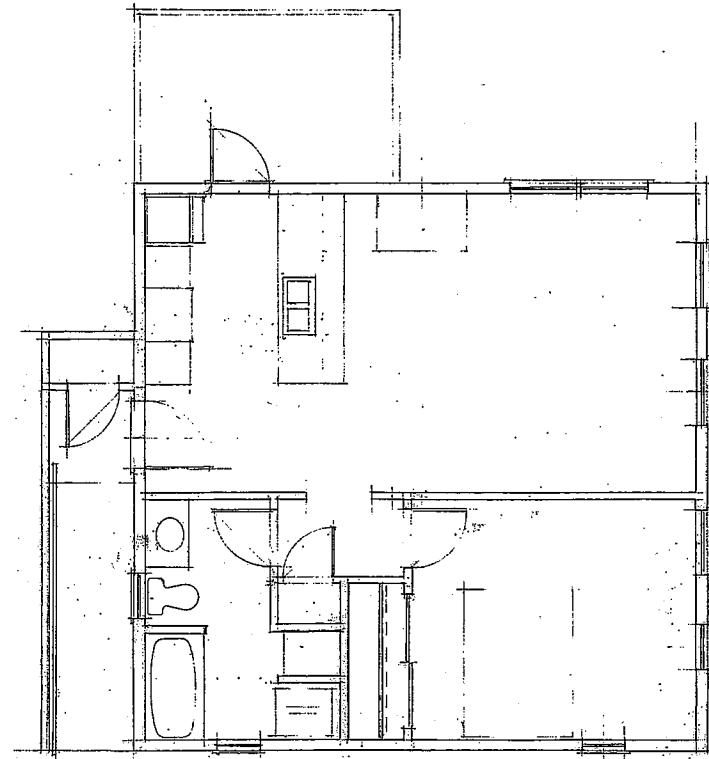
Lot 6 MAP 6
GEOFF KOTHAKAL AND VALMARIE

SITE PLAN
1" = 70' 00"

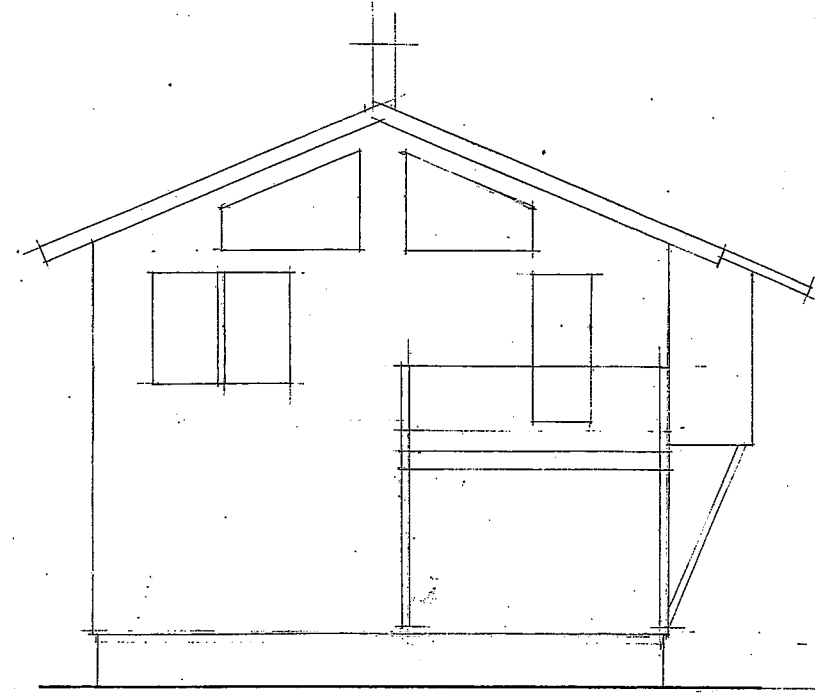
RECEIVED
Town of Durham
DEC 02 2013
Planning, Assessing
and Zoning



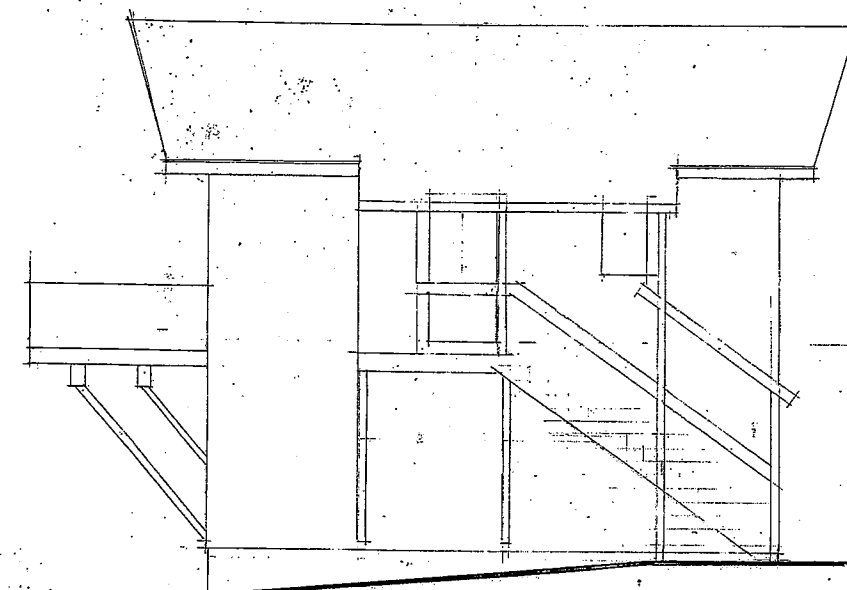
NORTH ELEVATION



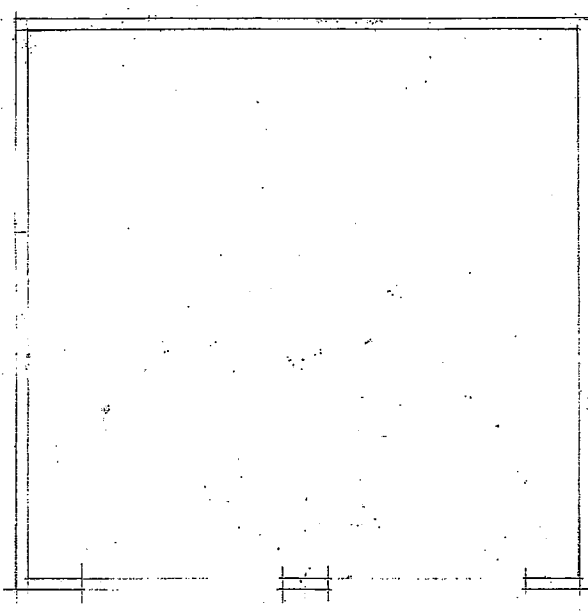
SECOND FLOOR PLAN



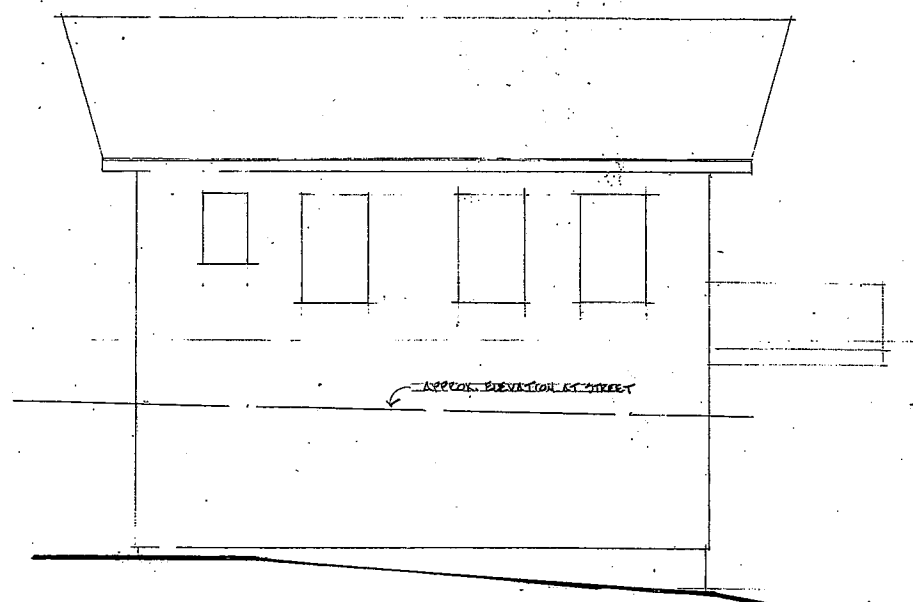
SOUTH ELEVATION



EAST ELEVATION



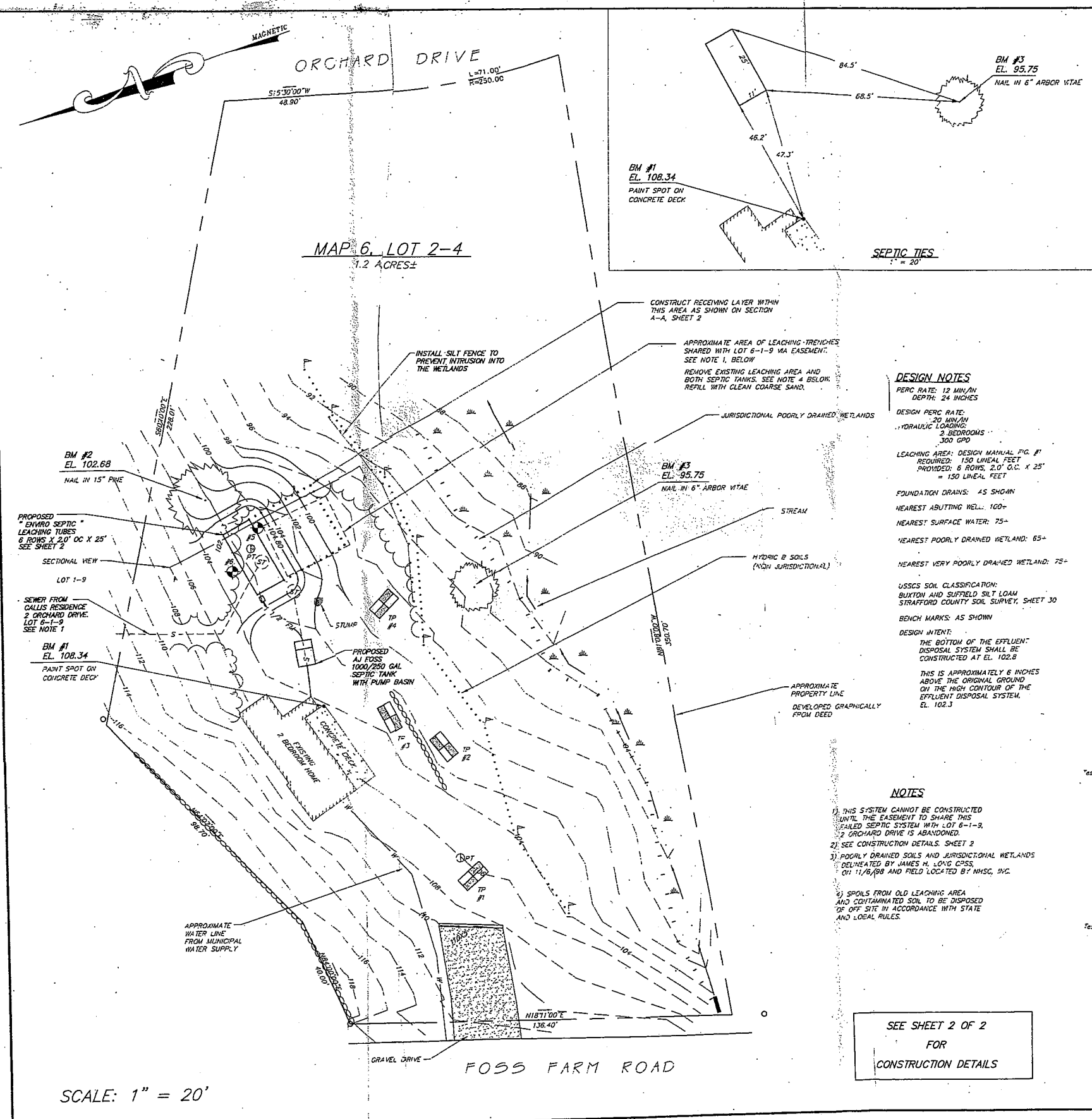
FIRST LEVEL (GARAGE) PLAN



WEST ELEVATION

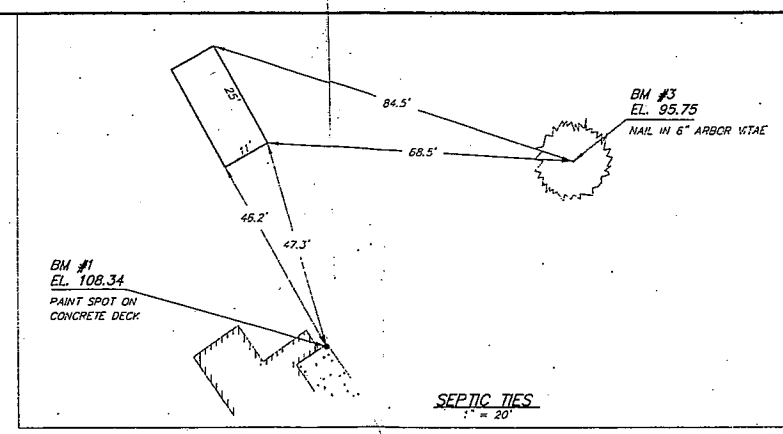
15.12.12
14.12.12

RECEIVED
Town of Durham
DEC 02 2013
Planning, Assessing
and Zoning



MAP 6, LOT 2-4
1.2 ACRES±

SCALE: 1" = 20'



SEPTIC TIES
1" = 20'

DESIGN NOTES

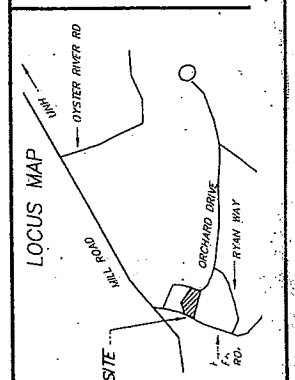
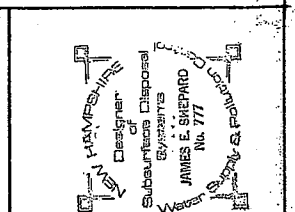
PERC RATE: 12 MIN/IN
DEPTH: 24 INCHES
DESIGN PERC RATE: 20 MIN/IN
HYDRAULIC LOADING: 2 BEDROOMS = 300 GPD
LEACHING AREA: DESIGN MANUAL FIG. #1
REQUIRED: 150 LINEAL FEET
PROVIDED: 6 ROWS, 2.0' O.C. X 25' = 150 LINEAL FEET
FOUNDATION DRAINS: AS SHOWN
NEAREST ABUTTING WELL: 100'-
NEAREST SURFACE WATER: 75'-
NEAREST POORLY DRAINED WETLAND: 65'-
NEAREST VERY POORLY DRAINED WETLAND: 75'-
USCS SOIL CLASSIFICATION: SILTY LOAM STRAFFORD COUNTY SOIL SURVEY, SHEET 30
BENCH MARKS: AS SHOWN
DESIGN INTENT:
THE BOTTOM OF THE EFFLUENT DISPOSAL SYSTEM SHALL BE CONSTRUCTED AT EL. 102.8
THIS IS APPROXIMATELY 6 INCHES ABOVE THE ORIGINAL GROUND ON THE HIGH CONTOUR OF THE EFFLUENT DISPOSAL SYSTEM, EL. 102.3

NOTES

1) THIS SYSTEM CANNOT BE CONSTRUCTED UNTIL THE EASEMENT TO SHARE THIS FAILED SEPTIC SYSTEM WITH LOT 6-1-9, 2 ORCHARD DRIVE IS ABANDONED.
2) SEE CONSTRUCTION DETAILS, SHEET 2
3) POORLY DRAINED SOILS AND JURISDICTIONAL WETLANDS DELINEATED BY JAMES H. LONG CPSS, ON 11/8/98 AND FIELD LOCATED BY NHSC, INC.
4) SPOILS FROM OLD LEACHING AREA AND CONTAMINATED SOIL TO BE DISPOSED OF OFF SITE IN ACCORDANCE WITH STATE AND LOCAL RULES.

SEE SHEET 2 OF 2
FOR
CONSTRUCTION DETAILS

TEST PIT DATA	
Test Pit # 4	Evaluated By: James E. Shepard Witnessed By: Larry Morse Date: 8/13/98 Designer: 777 Job No.: 98-0369
Depth (ft.)	Description
0-2	10YR 3/1, dark brown, sandy loam, granular, friable
2-18	2.5Y 5/2, grayish brown, silty loam, blocky, firm (M)
18-25	10YR 6/4, light yellowish brown, very fine sandy loam, massive, friable
25-60+	10YR 4/2, dark grayish brown, silty loam, massive, firm
Estimated Seasonal High Water Table @	18 inches. Observed Water Table @ None inches.
Restrictive @	25 inches. Refusal @ None inches. Roots @ inches.
Percolation Rate =	N/A Minutes/Inches @ inches.
Notes:	unsuitable for 0-18"
Test Pit # 1	Evaluated By: Lawrence E. Morse Witnessed By: Date: 8/13/98 Designer: 656 Job No.: 98-0369
Depth (ft.)	Description
0-9	10YR 4/4, dark yellowish brown, with 5Y 5/2, olive gray, with 7.5YR 5/8, strong brown, redoximorphic, very fine sandy loam, massive, friable (M)
9-14	2.5Y 4/2, dark gray brown, fine sandy loam, granular, friable
14-20	5Y 2/2, olive gray with 7.5YR 4/6, strong brown, redox accumulations, silty loam, blocky, firm
20-60	5Y 4/2, olive gray with 5Y 5/2, olive gray, redox depletions, silty clay, blocky, firm
Estimated Seasonal High Water Table @	0 inches. Observed Water Table @ None inches.
Restrictive @	14 inches. Refusal @ None inches. Roots @ inches.
Percolation Rate =	>60 Minutes/Inch @ 24 inches
Notes:	
Test Pit # 2	Evaluated By: Lawrence E. Morse Witnessed By: Date: 8/13/98 Designer: 656 Job No.: 98-0369
Depth (ft.)	Description
0-5	2.5Y 3/3, dark olive brown, fine sandy loam, granular, friable
5-15	2.5Y 4/2, olive brown, fine sandy loam, granular, friable
15-20	2.5Y 4/4, olive brown, with 2.5Y 5/6, light fine brown, with 2.5Y 5/2, grayish brown, redoximorphic features at 5% silty loam, blocky, friable
22-30	5Y 3/3, olive, with 2.5Y 5/2, grayish brown, redox depletions, silty clay, blocky, friable
30-65	5Y 4/2, olive gray, with 5Y 5/2, olive gray, redox depletions, silty clay, blocky, friable
Estimated Seasonal High Water Table @	18 inches. Observed Water Table @ None inches.
Restrictive @	22 inches. Refusal @ None inches. Roots @ inches.
Percolation Rate =	N/A Minutes/Inch @ inches
Notes:	
Test Pit # 3	Evaluated By: Lawrence E. Morse Witnessed By: Date: 8/13/98 Designer: 656 Job No.: 98-0369
Depth (ft.)	Description
0-18	2.5Y 4/2, dark grayish brown, miscellaneous fill, gravelly fine sandy loam, granular, friable
18-22	2.5Y 4/3, with redoximorphic features, olive-brown, silty clay-granular, friable
22-24	2.5Y 6/4, olive yellow, with 5Y 5/2, olive gray, redox depletions, silty clay, blocky, friable
24-60	5Y 4/2, olive gray, with 5Y 5/2, olive gray, redox depletions, silty clay, blocky, friable
Estimated Seasonal High Water Table @	18 inches. Observed Water Table @ 20 inches.
Restrictive @	None inches. Refusal @ None inches. Roots @ inches.
Percolation Rate =	N/A Minutes/Inch @ inches
Notes:	seepage @ 20"
WITH TILE SPADE AND LEDGE PROBE	
Test Pit # 5	Evaluated By: James E. Shepard Witnessed By: Date: 08/31/1999 Designer: 777 Job No.: 98-0369
Depth (ft.)	Description
0-13	10YR4/3, Brown, fine sandy loam, granular, friable
13-28+	2.5Y6/4, Light yellowish brown, coarse sand and gravel, single grain, loose (M)
28-48+	probe - no ledge
Estimated Seasonal High Water Table @	28 inches. Observed Water Table @ None inches.
Restrictive @	None inches. Refusal @ 48+ inches. Roots @ inches.
Percolation Rate =	N/A Minutes/Inches @ inches.
Notes:	Edge of old leachfield?
Test Pit # 6	Evaluated By: James E. Shepard Witnessed By: Date: 08/31/1999 Designer: 777 Job No.: 98-0369
Depth (ft.)	Description
0-4	10YR3/1, Dark brown, sandy loam, granular, friable
4-24	10YR4/4, Yellowish brown, very fine sandy loam, massive, friable
24-26	10YR5/1, Brown, very fine sandy loam, massive, firm
26-48	Probe - no ledge
Estimated Seasonal High Water Table @	24 inches. Observed Water Table @ None inches.
Restrictive @	24 inches. Refusal @ 48+ inches. Roots @ inches.
Percolation Rate =	12 Minutes/Inches @ 24 inches.
Notes:	



FOR: MEL TRUE
LOCATION: 9 FOSS FARM ROAD
TOWN: DURHAM, NH
JOB NO.: 98-369
DATE: 9/29/98
APPR. BY: JES
DRAWN BY: SEF/ML
REVISIONS: 10/19/98
SHEET 1 OF 2

N&S Consultants, Inc.
One Simonds Lane, Newmarket, NH 03857
603-689-3855 Fax: 603-689-7750
Environmental Planning
Subsurface Sewage Disposal - Environmental Planning
COPYRIGHT © 1998 By NH Soil Consultants, Inc.

RECEIVED
TOWN of Durham
DEC 02 2013
Planning, Assessing
and Zoning

**TITLE: PROPOSED SEWAGE DISPOSAL SYSTEM
FAILED SYSTEM REPLACEMENT**