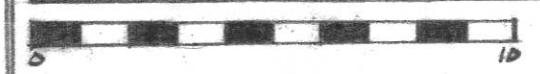
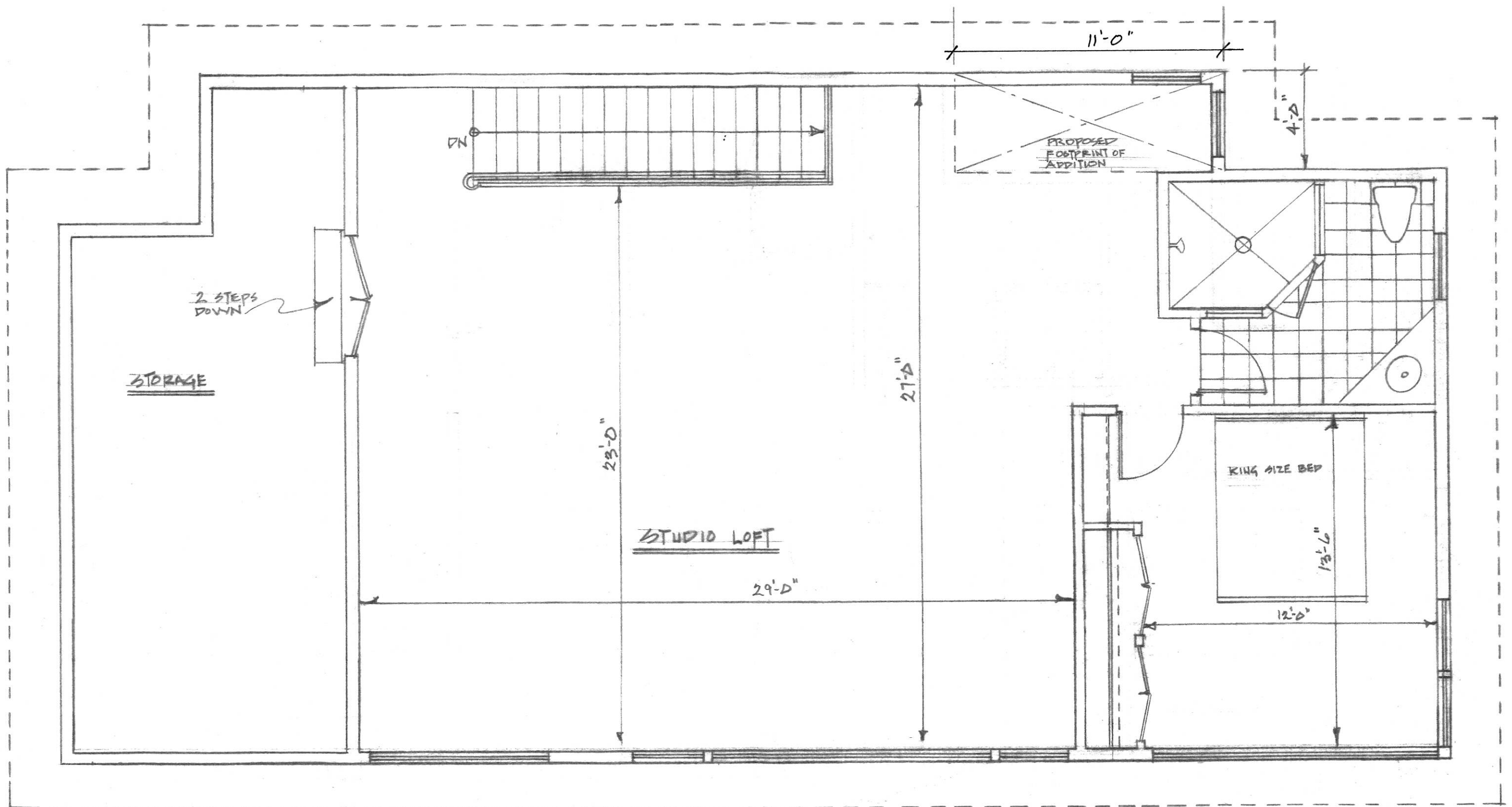


FIRST FLOOR PLAN 1/4" = 1'-0"



GREAT BAY PROJECT, DURHAM, NH 11-2-2015 REV. 11-11-2015 REV. 11-16-2015

3 CEDAR POINT

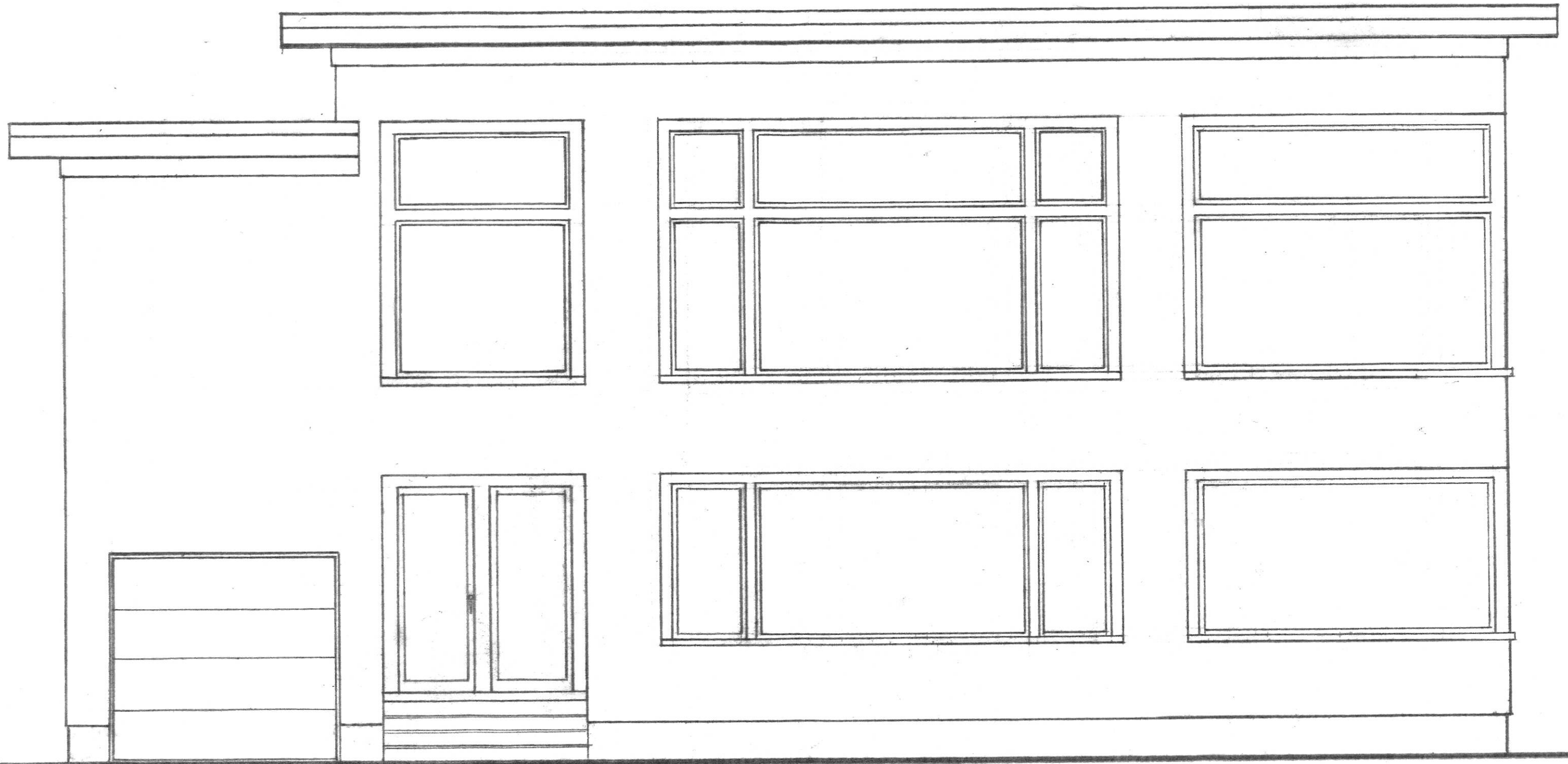


SECOND FLOOR PLAN 1/4" = 1'-0"



GREAT BAY PROJECT, DURHAM, NH 11-3-2015 REV. 11-11-2015 REV. 11-16-2015

3 CEDAR POINT



GREAT BAY PROJECT DURHAM, NEW HAMPSHIRE 3 CEDAR POINT

SOUTH ELEVATION (BAY) 1/4"=1'-0"



11-12-2015 REV. 11-17-20



EAST ELEVATION $\frac{1}{4}'' = 1'-0''$

0 10

GREAT BAY PROJECT, DURHAM, NH 3 CEDAR POINT